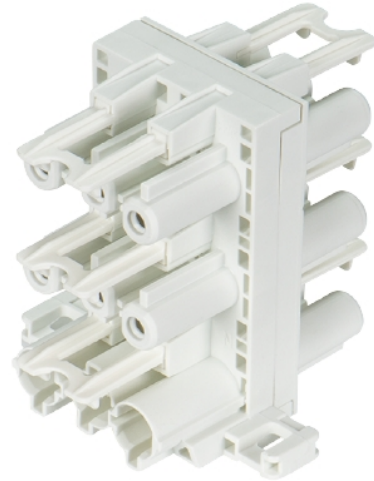


## Data sheet

Commercial Art.No.: 92.030.5353.0

Distributor GST18i3V 5P1 F V WS

Distribution block GST18i3, 3 pole, 1 input, 5 outputs, with mounting option, 250 V, 20 A, colour of coding: white



Commercial Art.No.	92.030.5353.0
EAN	4015573437265
Order Unit	1

Certificates / Approvals



## Technical data

### General

Rated current	20 A
Rated voltage	250 V
Rated impulse voltage	4 kV
Pollution degree	2
Mechanical coding	Code 1
Lockable	self-locking (unlocking by tool)
Color of coding/ contact carrier	white
Marking of poles	L, N, PE

### Model

Number of inputs	1
Number of outputs	5
Type of fastening	yes
Degree of protection (IP)	IP20
Type of distributor	HH-distributor

### Material

Housing material	Polyamide
halogen free	yes
Contact material	CuZn
Fire load	0.223 kWh
Insulation components continuous temperature	100 °C

Surface finish	Tin-plated
----------------	------------

#### Classification

ECLASS 11	
ECLASS 8.1	27440603
ETIM 7.0	EC002567
ETIM 6.0	EC002567
ETIM 5.0	EC002567
ETIM 4.0	EC002567

#### Dimensions

Length	44 mm
Width	52 mm
Height	52.5 mm

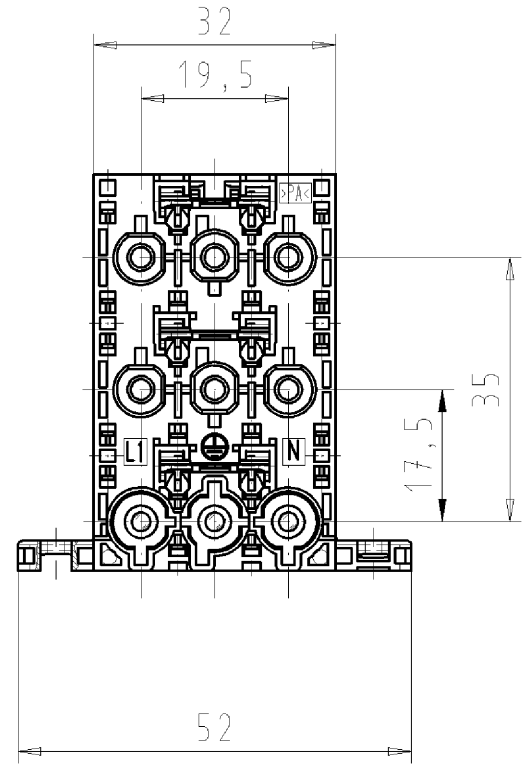
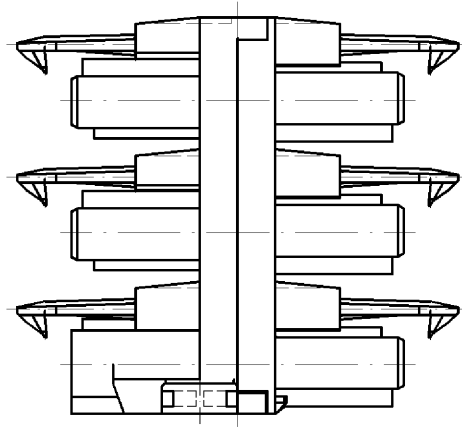
#### Product compliance

ROHS conformity status	Compliant/Exempted
ROHS exceptions	III-6(c)
REACH-SVHC conformity status	Duty-To-Declare
REACH-SVHC substances	Lead
REACH-SVHC CAS numbers	7439-92-1

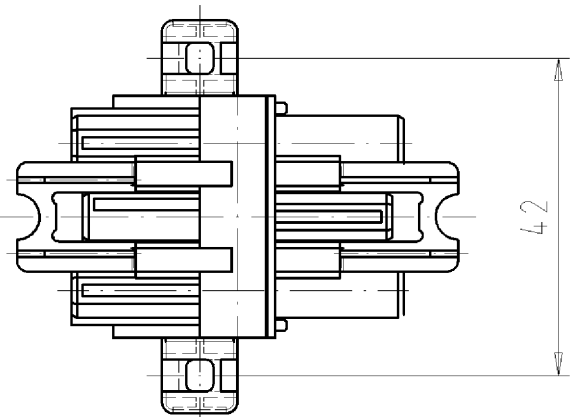
#### Accessories

Commercial Art.No.:	Article-type description:	Description:
05.588.5753.0	Lock GST18 VERTEILER WS	Locking device for distributor GST18i3-5, retrofit part, white
05.588.5753.1	Locking slide GST18 VERTEILER SW	Locking device for distributor GST18i3-5, retrofit part, black
05.561.3653.0	cover cap GST18i3VS B WS	Cover piece for female GST18i3, white
05.561.3653.1	cover cap GST18i3VS B SW	Cover piece for female GST18i3, black
05.564.5353.0	cover cap GST18i3/4/5 SW	Cover piece 12 pole black for female parts GST18i3-6
05.564.5353.2	cover cap GST18i3/4/5 WS	Cover piece 12 pole white for female parts GST18i3-6
05.594.4250.0	cover cap ST18/3B + GST18i3 ST WS	
05.594.4253.0	cover cap ST18/3B + GST18i3 ST WS	

These dimensions will be especially checked at delivery  
 Only inspection dimensions  
 With /E marked dimensions are only valid for internal use



Diese Maße werden bei Abnahme besonders geprüft  
 Ausschließlich Prüfmaße  
 Mit /E gekennzeichnete Maße sind nur für interne Zwecke gültig



Weitere Daten siehe Katalog  
 further data see catalog

Teilenummer part number	Typ type	Farbe colour
92.030.5353.0	GST1813V 5P1 F V WS	weiß/white
92.030.5353.1	GST1813V 5P1 F V SW	schwarz/black

Tolerierung nach DIN 7167/Tolerance system acc. to DIN 7167.  
 (This DIN-standard describes the envelope principle. According to the envelope principle the deviations of form and parallelism are limited by the size tolerances).

ja/yes  Stoffverbots- und Deklarationsliste nach UU-TQM-05/03 ist einzuhalten.  
 Conformity with Wieland document UU-TQM-05/03 (list of prohibited / declarable hazardous substances) to be declared!

Freitoleranz nach General tolerance CAD - Zeichnung, keine manuellen Änderungen CAD - drawing, no manual modifications allowed 1.Verwendung: First Use: Blatt: 1 von 1 Sheet: 1 of 1

/			Werkstoff/Material	2007	Tag/Date	Name	Zeichnung Nr./Drawing No.	Index
/				gezeichnet drawn	17.04.	Schmitt J.		
/		Maßstab/Scale 2:1	Vol. mm <sup>3</sup> Of1./Surf. mm <sup>2</sup>	geprüft checked	-	-	T 92.030.5353.0 01K	Maße in mm/Dimensions are in mm
/				Normgepr. Stand. check	-	-		
/		Ersatz für/Replacement for: -			Type Benennung/Tittle distribution block VERTEILER			
/					mit Anschraubflansch/ with locking flange mit Verriegelung/ eith interlocking			
/		Elektrische Verbindungen						
Index	Datum / Blatt Date / Sheet							
Änderung/Revision								

Weitergabe sowie Vervielfältigung dieses Dokuments, Verwertung und Mitteilung seines Inhalts sind verboten, soweit nicht ausdrücklich gestattet. Die Reproduktion, Distribution und Utilization of this document as well as the communication of its contents to others without express authorization is prohibited.

920305353001K\_4 CADW1042 Schmitt 2007-04-18T08:35:29 1.000