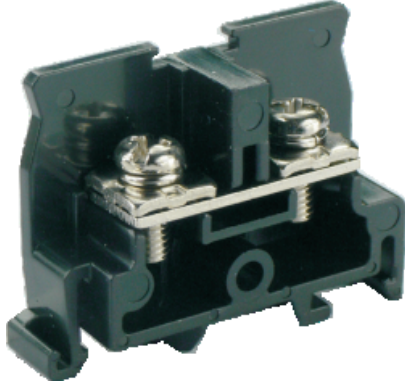


Barrier screw terminal block-UTD-41-391005







Barrier screw terminal block , rated voltage:660V , Max. operating current:50A, connection method : screw connection , number of connections : 2 , crimping range : 3.5mm² -8mm² , AWG : 12-8 , thickness:14.5mm , height:34mm , color : Black , mounting type : TH35-7.5、 TH35-15、 G32-15、 G32-18

Product parameter

Parameter	Data
Packing unit (PCS)	/
NW per piece(g)	/
Layers	1
Number of connections	2
Rated cross section(mm ²)	8
Color	black
Insulation material	PA
Flame retardant grade (UL94)	V0
Rated voltage(V)	660
Rated current(A)	50
Temperature of insulation material	-40 ~ +125
Wire feed	Terminal side

Product certification

Parameter	Data
Certification logo	
Certification logo	

Parameter	Data
Certification logo	
Certification logo	

Technical data

Parameter	Data
Connection Method	Screw connection
Screw thread	M5 × 12
Stripping length(mm)	/
Tightening torque	2.2-2.8
Solid conductors(mm ²)	3.5-8
Solid conductors AWG	12-8
Stranded conductors(mm ²)	3.5-8
Stranded conductors AWG	12-8
Operating temperature ()	-40 ~ +105
Ambient temperature (storage/transportation) ()	-25 ~ +60
Relative humidity	30% ~ 90%
Connection in acc. with standard	IEC 60947-7-1

Dimension

Parameter	Data
Width(mm)	46
Thickness(mm)	14.5
Height(mm)	34