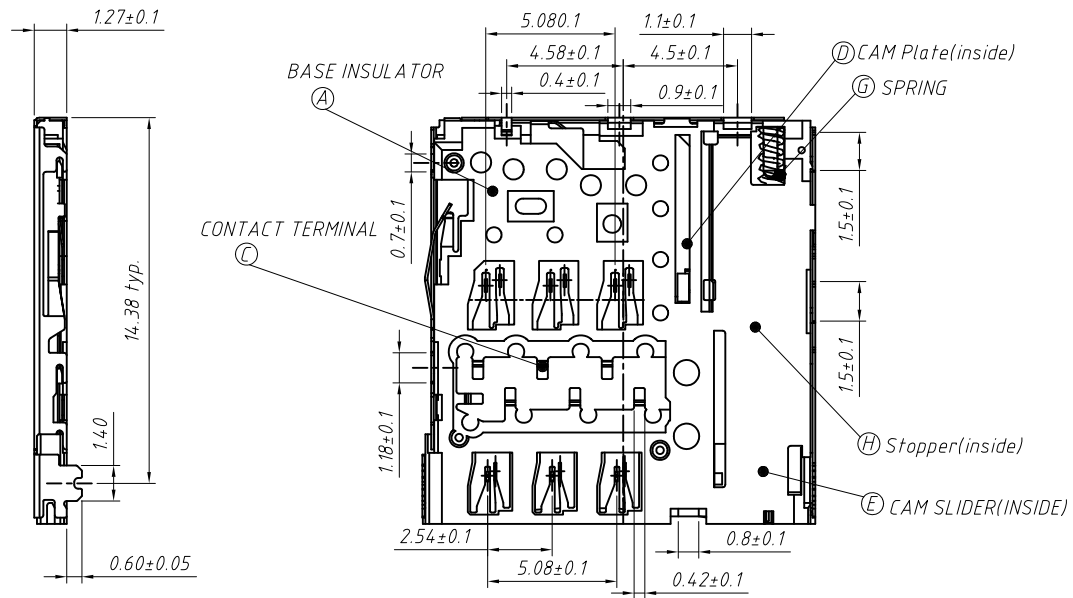
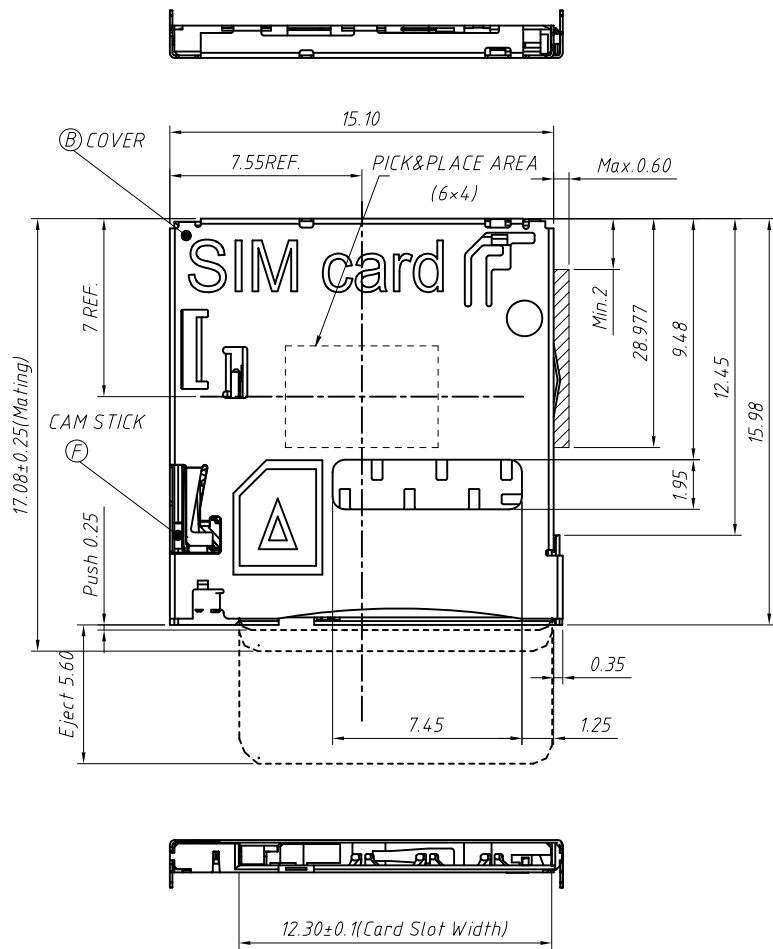


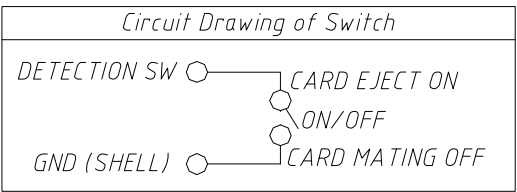
1 2 3 4 5 6 7 8

A
B
C
D
E
F
G
H



NOTE

- 1. LEAD Co-planarity: Max 0.08mm
- 2. No rust, contamination, damage nor deformation effecting on function
- 3. Switch moving area
- 4. Non-cumulative tolerance
- 5. Circuit Drawing of switch

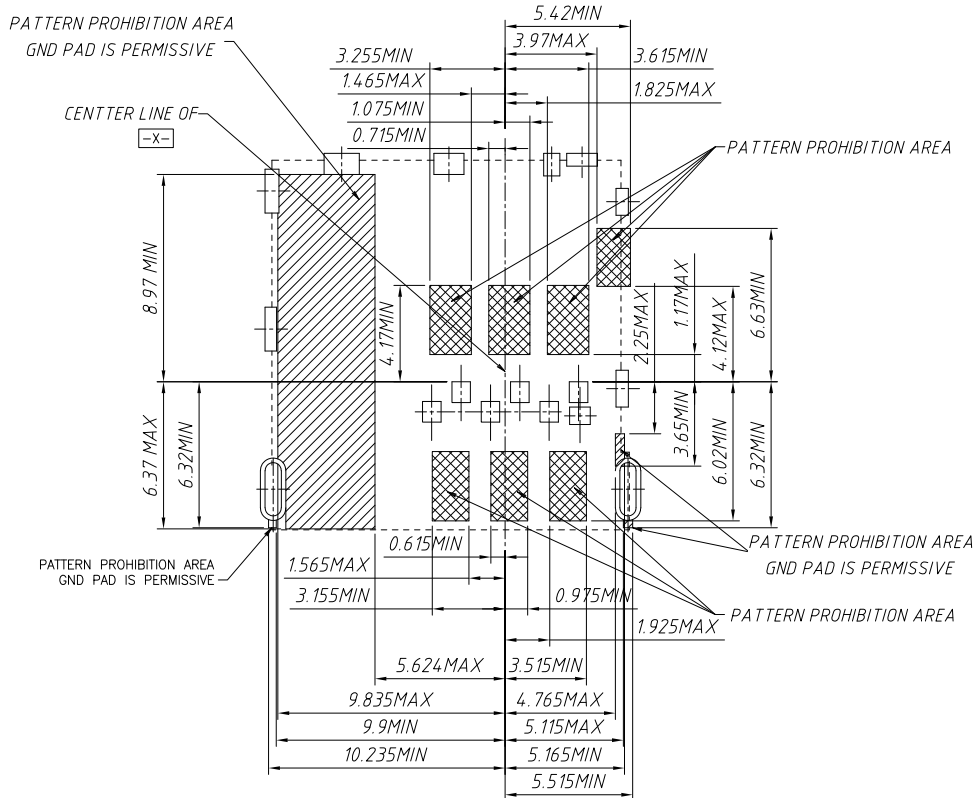


Material:

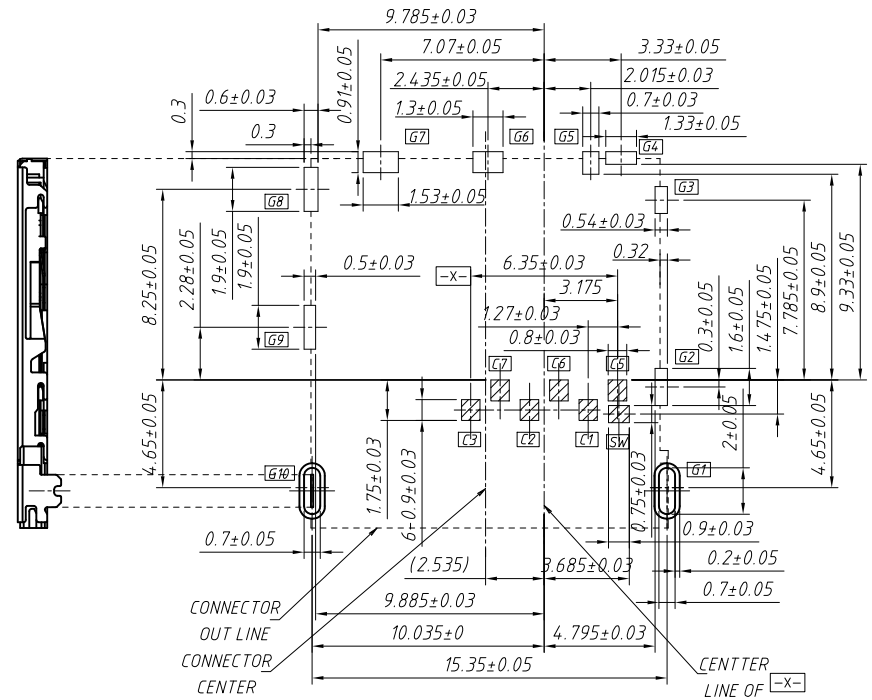
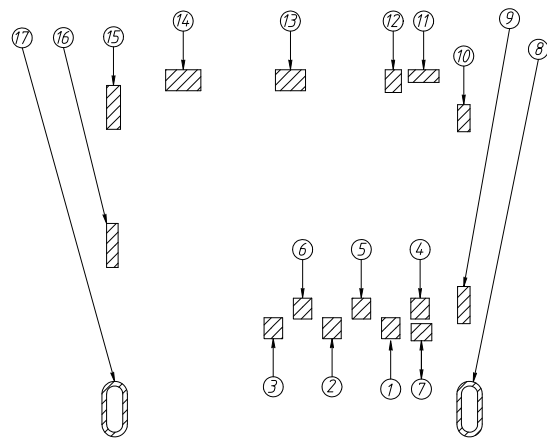
- A: Base Insulator: LCP, Black.
- B: Cover: Stainless, Not hold down: Nickel; Hold down: Au flash over Nickel.
- C: Contact Terminal: Copper Alloy, Au over Nickel
- D: CAM Plate: Copper Alloy, Nickel.
- E: CAM Slider: LCP, Black.
- F: CAM Stick: Stainless
- G: Spring: Stainless
- H: Stopper: Stainless

GENERAL TOLERANCE		ANGLE TOLERANCE		PROJECTION	Description:
X	±0.15	X	±5°	UNITS	Micro SIM CONN; PUSH/ PUSH, 6Pin, H1.27mm, with CD Pin L-KLS1-SIM-098-H1.27-R
.X	±0.03	.X	±3°	SHEET SIZE	
.XX	±0.05	.XX	±2°	KLS P/N:	
Draw by:	Jenny	Date:	2018-03-10		NingBo KLS ELECTRONIC CO., L TD.
Check by:		Date:	2018-03-10		
SCALE		SHEET	1 OF 1		

1 2 3 4 5 6 7 8



RECOMMENDED PCB LAYOUT
General TOLERANCE ±0.05

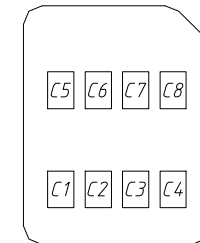


SIM CARD PAD LAYOUT

SIM Card Pin Assignment

Connector Pin Assignments

No.	Pin name	Description
①	C1	Vcc of SIM
②	C2	RST of SIM
③	C3	CLK of SIM
④	C5	GND of SIM
⑤	C6	Vpp of SIM
⑥	C7	I/O of SIM
⑦	SW	Detection Switch
⑧~⑰	GND	Shell Ground



Pin No.	Name
C1	VCC
C2	RST
C3	CLK
C4	Reserved
C5	GND
C6	VPP
C7	I / O
C8	Reserved

GENERAL TOLERANCE		ANGLE TOLERANCE		PROJECTION		Description:	
X	±0.15	X	±5°	UNITS	mm	Micro SIM CONN; PUSH/ PUSH, 6Pin, H1.27mm, with CD Pin L-KLS1-SIM-098-H1.27-R	
.X	±0.03	.X	±3°	SHEET SIZE	A4		
.XX	±0.05	.XX	±2°	KLS P/N:			
Draw by:	Jenny	Date:	2018-03-10	 NingBo KLS ELECTRONIC CO.,L TD.			
Check by:		Date:	2018-03-10				
SCALE		SHEET	1	OF	1		