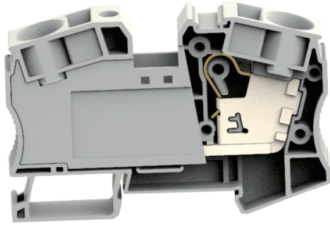


Push-in terminal block-UJ6-35 - 421518



Push-in terminal block , rated voltage : 1000V , Max. operating current : 125A , connection method : spring connection , number of connection : 2 , crimping range : 1.5mm² -25m² , AWG : 16-4 , thickness: 12.2mm , height: 50.6mm , color : grey , mounting method : TH35-7.5、 TH35-15

Product parameter

Parameter	Data
Packing unit (PCS)	10
NW per piece(g)	35.1
Layers	1
Connections quantity	2
Rated cross section(mm ²)	35
Color	grey
Insulation Materials	PA
Flame retardant grade	V0
Insulation temperature	-40 ~ +125
Wire feed	Above the terminal

Product certification

Parameter	Data
Certification logo	CE
Certification logo	RoHS

Technical data

Parameter	Data
Connection Data - Connection Method	Spring connection
Connection data-Stripping length(mm)	24

Parameter	Data
Connection data-Solid conductors(mm ²)	6-35
Connection data-Solid conductors AWG	10-2
Connection data-Stranded conductors(mm ²)	6-35
Connection data-Stranded conductors AWG	10-2
Standards and Specifications - Connections to Standards	IEC 60947-7-1
Environmental conditions-Operating temperature ()	-40 ~ +105
Environmental conditions-Ambient temperature (storage/transportation) ()	-25 ~ +55
Environmental conditions-Relative humidity	30% ~ 90%

Dimension

Parameter	Data
Dimensions - Width(mm)	96
Dimensions - Thickness(mm)	16.2
Dimensions - Height(mm)	58.6