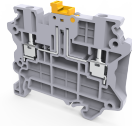


# CYK2.5N



## 2.5 sq.mm Knife Type Disconnect and Test Terminal Blocks

These blocks are used measuring control and regulatory circuits. They provide a clear functional advantage for devices having utility instruments and associated transformers in CYK2.5 disconnection is achieved by lifting a lever which operates the knife contact. Specially designed socket headed screws act as test monitoring points in disconnecting and test Terminal blocks.

### TECHNICAL DATA

Rated Voltage	500 V
Rated Current	20 A
Tightening Torque	0.4 Nm
Housing Material	Polymide
Standard Colour	Grey
Product Function	Knife Type Disconnect and Test
Wire Entry Orientation	Side Entry
Mounting Possibility	DIN 35/DIN 35-15 Rail
Screw Size	M2.5
Operated by	Screwdriver
Rated Surge Voltage	8 KV
Pollution Degree	3

### CONNECTION DATA

Conductor Cross Section AWG/Kcmil min	24 AWG
Conductor Cross Section AWG/Kcmil max	12 AWG
Conductor Cross Section Stranded with Ferrule/Lug min	0.2 mm <sup>2</sup>
Conductor Cross Section Stranded with Ferrule/Lug max	2.5 mm <sup>2</sup>
Conductor Cross Section Solid min	0.2 mm <sup>2</sup>
Conductor Cross Section Solid max	4 mm <sup>2</sup>
2 Conductors with same Cross Section Stranded with TWIN Ferrule/Lug min	0.5 mm <sup>2</sup>
2 Conductor with same Cross Section Stranded with TWIN Ferrule/Lug max	0.75 mm <sup>2</sup>
Stripping Length	8 mm
Internal Cylindrical Gauge	B3

### DIMENSIONS

Height	52.35 mm
Height with DIN 35 x 15 mm rail	60.65 mm
Height with DIN 35 x 7.5 mm rail	53.2 mm
Length	58.80 mm
Width (Thickness)	5 mm

### ORDERING INFORMATION

CAT. NO.	DESCRIPTION	STD. PACK
CYK2.5N	2.5 sq.mm Knife Type Disconnect and Test Terminal Blocks in Grey colour	100

### ACCESSORIES

IMAGES	CAT. NO.	DESCRIPTION	STD. PACK
	CA701-1M	Din 35 Rail unslotted 1 meter	50
	CA701-2M	Din 35 Rail unslotted 2 meter	50
	CA701-2M-S	Din 35 Rail slotted 2 meter	50
	CA701-1M-S	Din 35 Rail slotted 1 meter	50
	CA701-15-1M	Din 35 Rail 15 deep unslotted 1 meter	50
	CA701-15-1M-S	Din 35 Rail 15 deep slotted 1 meter	50
	CA701-15-2M	Din 35 Rail 15 deep unslotted 2 meter	50
	CA701-15-2M-S	Din 35 Rail 15 deep slotted 2 meter	50
	CA702	End Clamp in Polyamide 66 suitable for Din 32 / Din 35 / Din 35-15 Rails	50
	CA802	End Clamp in Polyamide suitable for Din 35 / Din 35-15 Rails	50
	EPCY4/3	End Plate in Grey Colour	50
	JX2.5/11/8	8 Pole Alternate Shorting Link	100
	JX2.5/11/2	2 Pole Alternate Shorting Link	100
	JX2.5/2	Shorting Link for 2.5 sq mm series	100
	JX2.5/3	Shorting Link for 2.5 sq mm series	50
	JX2.5/4	Shorting Link for 2.5 sq mm series	50
	JX2.5/5	Shorting Link for 2.5 sq mm series	50
	JX2.5/6	Shorting Link for 2.5 sq mm series	50
	JX2.5/7	Shorting Link for 2.5 sq mm series	10
	JX2.5/8	Shorting Link for 2.5 sq mm series	10
	JX2.5/10	Shorting Link for 2.5 sq mm series	10
JX2.5/20	Shorting Link for 2.5 sq.mm series	10	
	CA509/K5	Blank Marking Tag	100
	MC5	MARKER CARD 5MM PITCH WITH 84 TAGS	10

### APPROVALS



CYK2.5N



**connectwell**  
THE RIGHT CONNECTION

**NOTES**

- 1) Polyamide 6,6 flammability V0 grade as per UL 94.
- 2) The Rated current is with the use of copper (Cu) conductor/Wire.

**RATINGS AS PER STANDARDS**

STANDARDS	IEC/EN60947-7-1	UL 1059
Approvals	CE	UL
Conductor Cross Section Stranded min.	0.2 mm <sup>2</sup>	24 AWG
Conductor Cross Section Stranded max.	2.5 mm <sup>2</sup>	12 AWG
Rated Voltage	500 V	300 V
Rated Current	20 A	16 A
Tightening Torque	0.4 Nm	4.5 lb-in