

**Features:**

- \* Available in 2 thru 24 circuit housing
- \* Voltage rating 600V (R.M.S.)
- \* Current rating 9 Amps per circuit

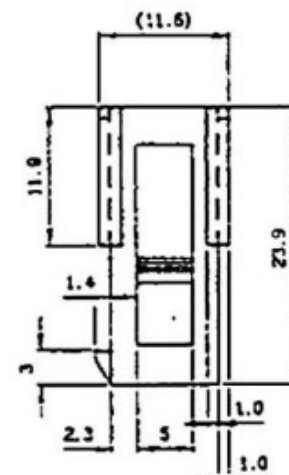
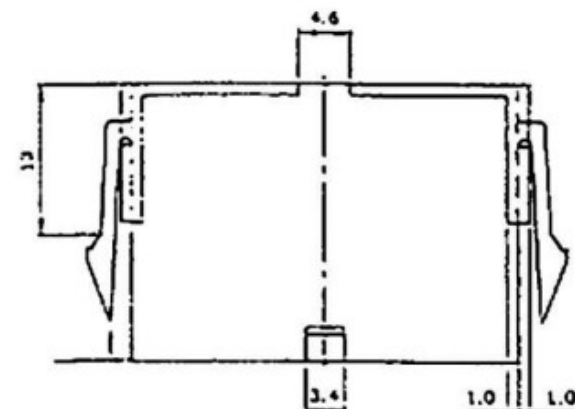
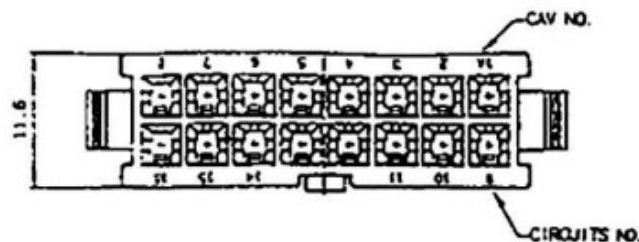
**Specification:**

**Material:**

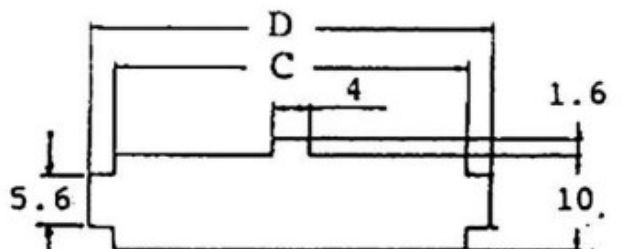
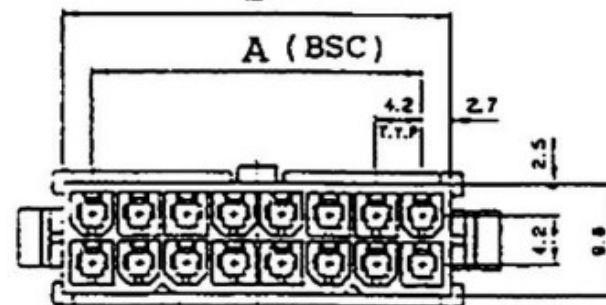
- \* UL 94V-2 nylon 66

**Electrical:**

- \* Voltage rating: 600V AC/DC
- \* Current rating: 9A max
- \* Withstanding Voltage: 1500V AC for 60 seconds
- \* Insulation Resistance: 1000M ohms min
- \* Temperature Rise: 30°C max
- \* Storage Temperature Range: -40°C to 105°C



B (REF)



Mounting Hole Details for 4259-NE Housing

Max. Panel Thickness: 2.54mm

**Dimensional Information (mm)**

Circuits	Dim. A	Dim. B	Dim. C	Dim. D	Circuits	Dim. A	Dim. B	Dim. C	Dim. D	Circuits	Dim. A	Dim. B	Dim. C	Dim. D
2		5.4	5.8	10.8	10	16.8	22.2	22.0	27.6	18	33.0	39.0	30.4	44.4
4	4.2	9.8	10.0	15.0	12	21.0	28.4	28.8	31.8	20	37.8	43.2	43.6	48.0
6	8.4	13.8	14.2	19.2	14	25.2	30.8	31.0	36.0	22	42.0	47.4	47.8	52.0
8	12.6	18.0	18.4	23.4	16	29.4	31.8	35.2	40.2	24	46.2	51.6	52.0	57.0

RoHS  
Compliant

**SOUTH SEA TERMINAL CO.,LTD**

APPD.  
核准  
DWG.  
製圖  
DATE  
2026/06/02

SCALE  
比例  
UNIT  
單位  
PAGE  
張數  
1 OF 1

TOLERANCE  
容許公差  
0.0 ±  
.00 ±  
SIZE  
線規尺寸  
A4  
REV.  
版本  
A

PART NAME  
MINI FIT 4.2mm FEMALE HOUSING  
WHITE COLOR ROHS LOW-LEAD  
PART NO.  
MF-14M (MF-2X7M)(WW420-F14)