

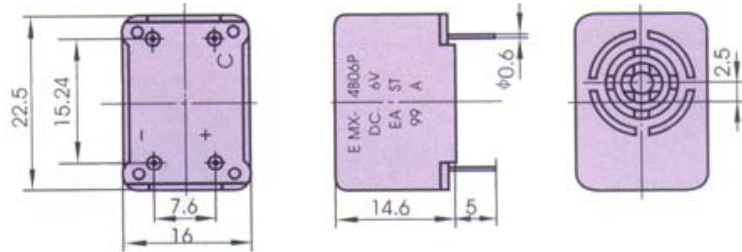
• **EMX-4B00P Series**



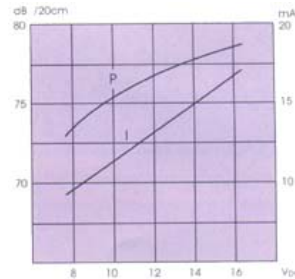
FEATURES:

- Low current consumption
- Trigger control terminal
- Pin terminals for direct mounting on P.C Board

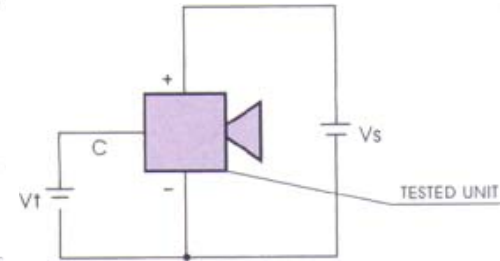
DIMENSIONS: (Unit: mm)



CHARACTERISTICS:



TEST CIRCUIT:



ELECTRICAL SPECIFICATIONS :

Model No.	EMX-4B06P	EMX-4B12P	EMX-4B24P
Min. Sound Pressure Level (dB)	70 /6V _{DC} /20cm	70 /12V _{DC} /20cm	70 /24V _{DC} /20cm
Rated Voltage (V _{DC})	6	12	24
Operating Voltage (V _{DC})	3 ~ 8	8 ~ 16	18 ~ 30
Trigger Voltage (V _{DC})	≥ 3	≥ 5	≥ 18
Max. Consumption (mA)	23/6V _{DC}	15 /12V _{DC}	14/24V _{DC}
Resonant Frequency (Hz)	400 ± 100		
Operating Temperature (°C)	-40 ~ +85		
Weight (g)	9		

PACKING INFORMATION :

Packing :	1400 pcs per export carton
Carton Size :	47 X 30.5 X 35 cm
G. Weight :	14.5 kgs
N. Weight :	13 kgs