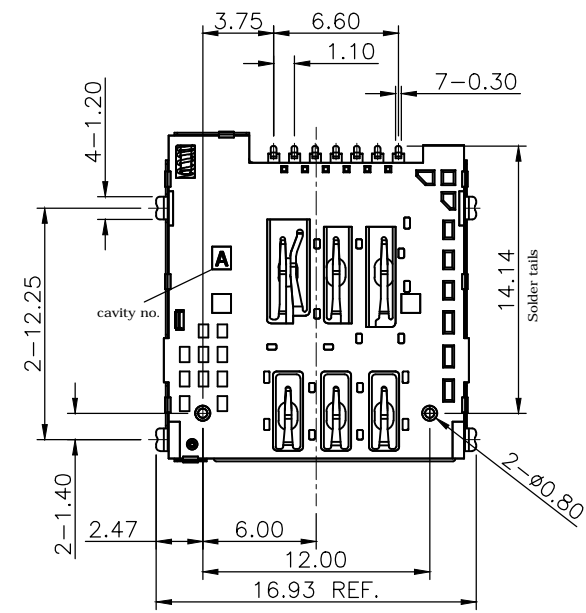
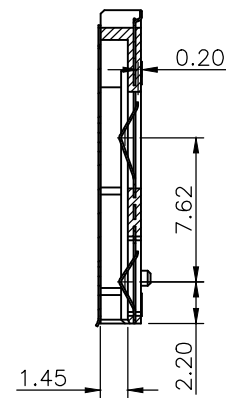
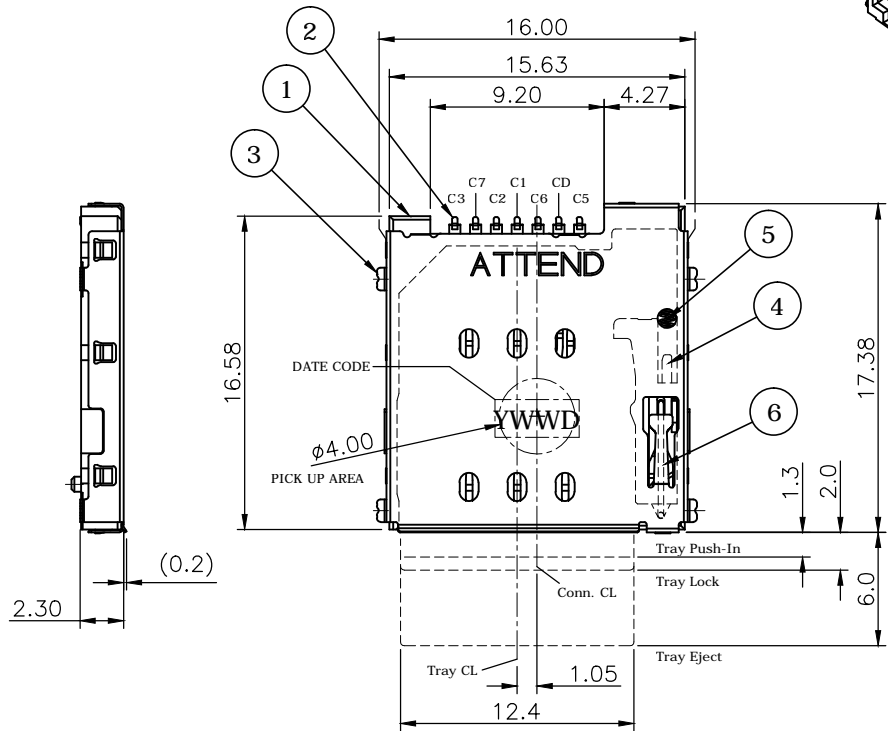
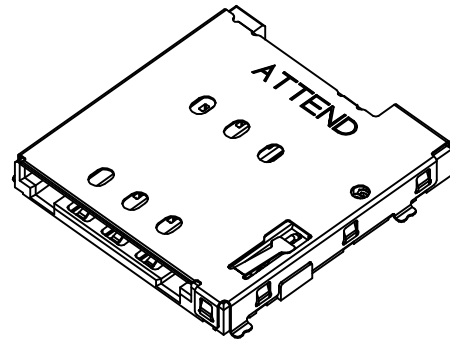


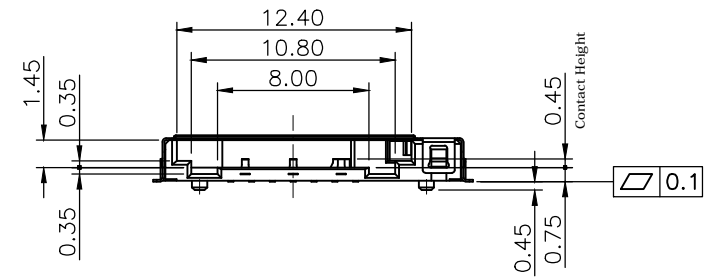
DATE CODE: (YWW)
 Y= YEAR(2=2022)
 WW= WEEK(01-52)
 D= DAY(1-7)


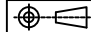
| REV. | DESCRIPTION | DRAWN | DATE |
|------|-----------------|-------|------------|
| 1 | INITIAL RELEASE | FROS | 2020/07/31 |
| 2 | ECR2100014 | FROS | 2021/06/29 |
| 3 | ECR2200004 | FROS | 2022/04/18 |



③ improved design of housing bottom

This part is a connector only, it should be used together with Nano SIM Tray P/N: 115U-T001

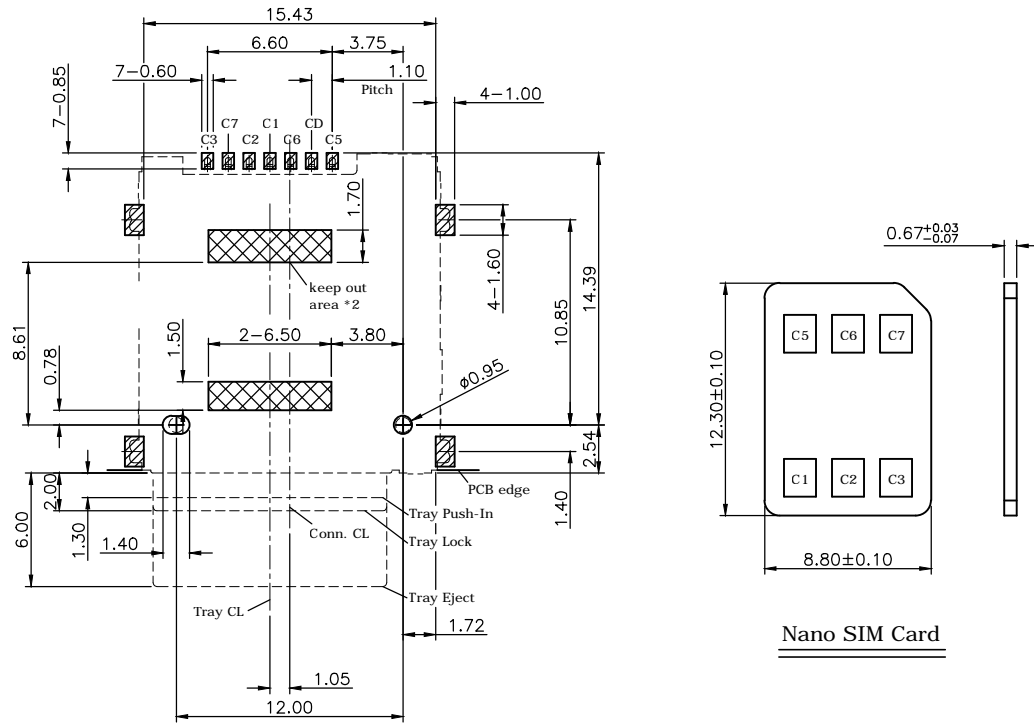
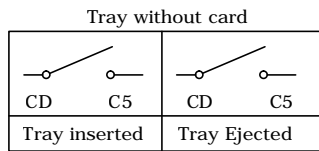
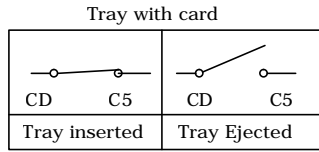


| UNLESS OTHERWISE SPECIFIED TOLERANCE | | | |  |
|---|----------------|--------------|---|---|
| UNIT: | DECIMAL | LINEAR | ANGLES | |
| mm | X. | ±0.50 | ±5° | www.attend.com.tw |
| | X.X | ±0.25 | ±3° | |
| | X.XX | ±0.12 | ±1° | |
| DRAWN | Fros | 2020/04/06 | DRAWN NAME: Nano SIM Socket, 6 Pin, Tray-Push Push, G/F, Reel | |
| CHECKED | Tim | 2020/04/06 | | |
| APPROVED | Ken | 2020/04/06 | PRODUCT NO. | 115U-A101 |
|  | SCALE 2.5/1 | SHEET 1/4 | SIZE A4 | FILE NAME 115U-A101_B_3 |

| | | | |
|------|---------------|-------|------|
| REV. | DESCRIPTION | DRAWN | DATE |
| | see sheet one | | |

Pin out & Card detect switch status.

| Pin NO. | Pin Name |
|---------|--------------------|
| C 1 | VCC |
| C 2 | RST |
| C 3 | CLK |
| C 5 | GND |
| C 6 | VPP |
| C 7 | I/O |
| CD | Card Detect Switch |



Recommended PCB layout (top view)
General tolerance: ±0.05mm

SPECIFICATION:

1. ELECTRICAL
 - 1.1 Current Rating: 0.5A per pin
 - 1.2 Voltage Rating: 10V DC
 - 1.3 Contact Resistance: Initial 50mΩ, after 100mΩ Max.
 - 1.4 Insulation Resistance: 1000MΩ
 - 1.5 Dielectric Withstanding Voltage: 500VAC
2. MECHANICAL
 - 2.1 Durability: 5,000 cycles
 - 2.2 Contact Normal Force: 0.3N Min. per pin
 - 2.3 Tray Withdrawal Force: 2N Min.
3. ENVIRONMENTAL
 - 3.1 Operating temperature range: -40°C~+85°C
 - 3.2 Storage temperature range: -40°C~+85°C
4. SOLDER ABILITY
 - 4.1 Recommended IR-Reflow Temperature: 260°C

This part is a connector only, it should be used together with Nano SIM Tray P/N: 115U-T001

| | | |
|---|-----------|---|
| * | 115U-T001 | Card Tray, Used for Nano SIM Card Socket Push-Push, Lock, PC+ABS, Black, Reel |
|---|-----------|---|

| | | |
|---|---------|---|
| 6 | CRANK | Stainless Steel |
| 5 | SPRING | SWP-B, Nickel plating |
| 4 | SLIDER | LCP, UL94V-0, Black |
| 3 | SHELL | Stainless Steel, Nickel plating |
| 2 | CONTACT | Phosphor Bronze, Gold plating over Nickel |
| 1 | HOUSING | LCP, UL94V-0, Black |

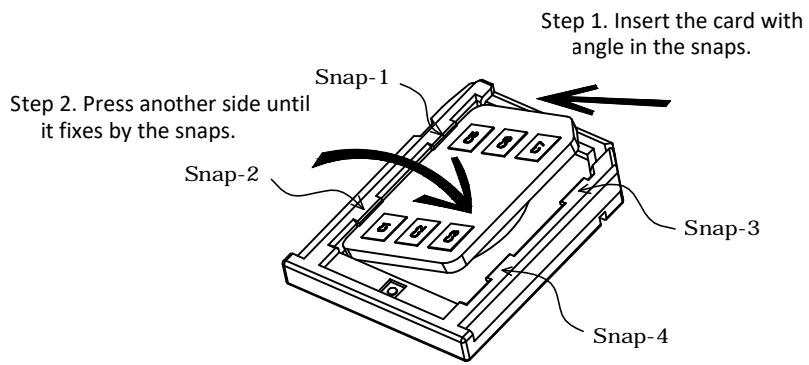
| NO. | PART NAME | DESCRIPTION | | |
|--------------------------------------|-----------|-------------|---|-------------------------|
| UNLESS OTHERWISE SPECIFIED TOLERANCE | | | | |
| UNIT: | DECIMAL | LINEAR | ANGLES | |
| | X. | ±0.50 | ±5° | |
| | X.X | ±0.25 | ±3° | |
| | X.XX | ±0.12 | ±1° | |
| www.attend.com.tw | | | | |
| DRAWN | Fros | 2020/04/06 | DRAWN NAME: Nano SIM Socket, 6 Pin, Tray-Push Push, G/F, Reel | |
| CHECKED | Tim | 2020/04/06 | | |
| APPROVED | Ken | 2020/04/06 | PRODUCT NO. 115U-A101 | |
| SCALE | 2.5/1 | SHEET 2/4 | SIZE A4 | FILE NAME 115U-A101_B_3 |



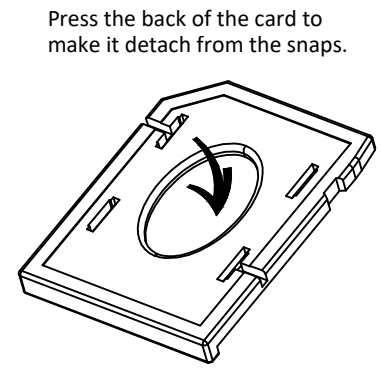
| | | | |
|------|---------------|-------|------|
| REV. | DESCRIPTION | DRAWN | DATE |
| | see sheet one | | |

Instruction Manual

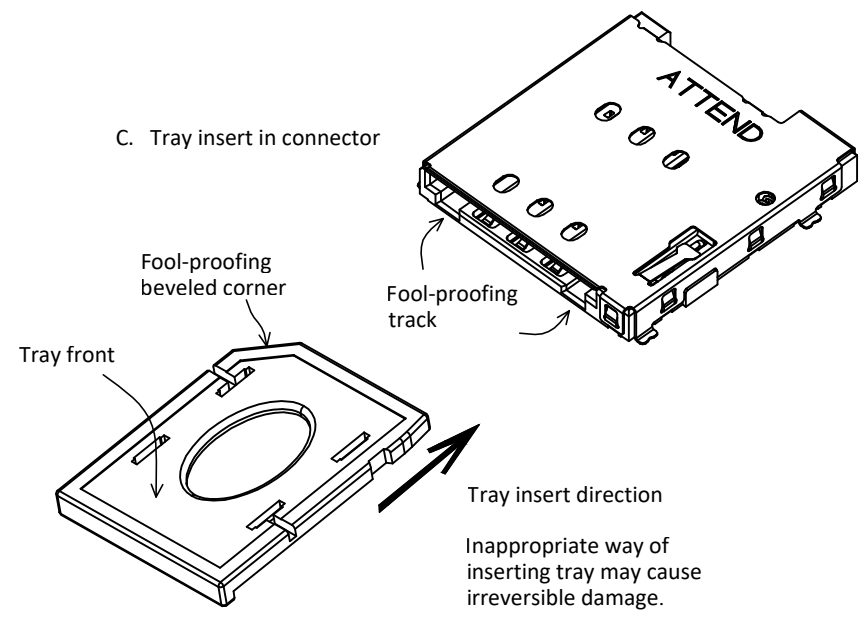
A. Set up Nano SIM card




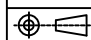
B. Remove Nano SIM card



C. Tray insert in connector



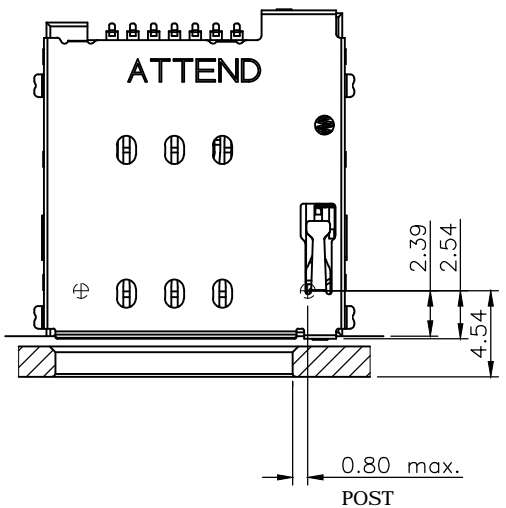
This part is a connector only, it should be used together with Nano SIM Tray P/N: 115U-T001

| | | | | | |
|---|---------|-------------|---|---|--|
| UNLESS OTHERWISE SPECIFIED TOLERANCE | | | |  | |
| UNIT: | DECIMAL | LINEAR | ANGLES | | |
| mm | X. | ±0.50 | ±5° | www.attend.com.tw | |
| | X.X | ±0.25 | ±3° | | |
| | X.XX | ±0.12 | ±1° | | |
| DRAWN | Fros | 2020/04/06 | DRAWN NAME: Nano SIM Socket, 6 Pin, Tray-Push Push, G/F, Reel | | |
| CHECKED | Tim | 2020/04/06 | PRODUCT NO. 115U-A101 | | |
| APPROVED | Ken | 2020/04/06 | FILE NAME 115U-A101_B_3 | | |
|  | | SCALE 2.5/1 | SHEET 3/4 | SIZE A4 | |

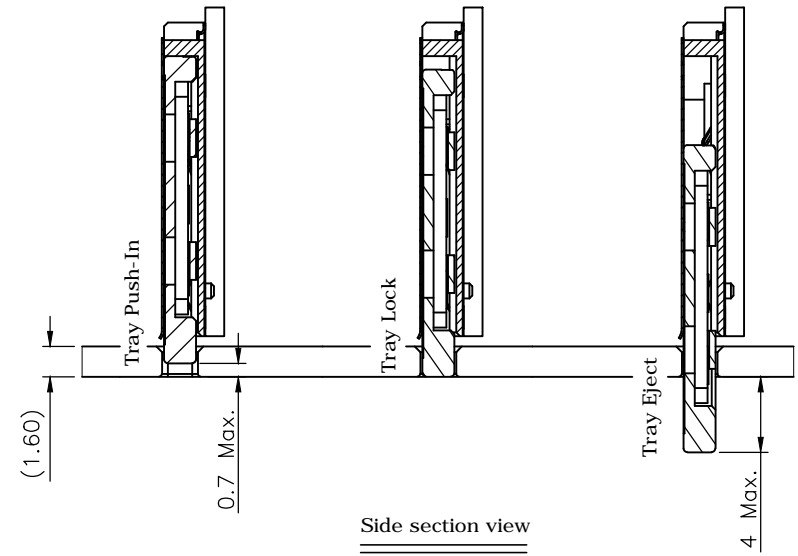
| | | | |
|------|---------------|-------|------|
| REV. | DESCRIPTION | DRAWN | DATE |
| | see sheet one | | |

Instruction Manual

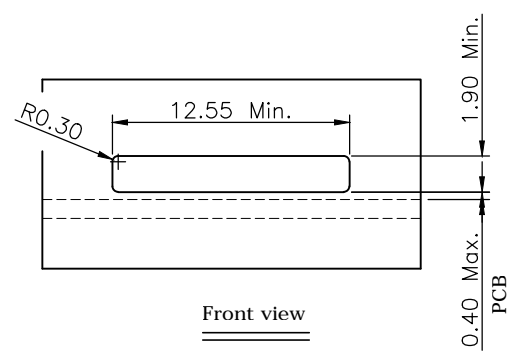
Recommended Panel Cut



Top view





Side section view



Front view

This part is a connector only, it should be used together with Nano SIM Tray P/N: 115U-T001

| | | | | |
|---|-------------|------------|--|--|
| UNLESS OTHERWISE SPECIFIED TOLERANCE | | | |  www.attend.com.tw |
| UNIT: | DECIMAL | LINEAR | ANGLES | |
| mm | X. | ±0.50 | ±5° | |
| | X.X | ±0.25 | ±3° | |
| | X.XX | ±0.12 | ±1° | |
| DRAWN | Fros | 2020/04/06 | DRAWN NAME: | |
| CHECKED | Tim | 2020/04/06 | Nano SIM Socket, 6 Pin, Tray-Push Push, G/F, Reel | |
| APPROVED | Ken | 2020/04/06 | PRODUCT NO. 115U-A101 | |
|  | SCALE 2.5/1 | SHEET 4/4 | SIZE A4 | FILE NAME 115U-A101_B_3 |