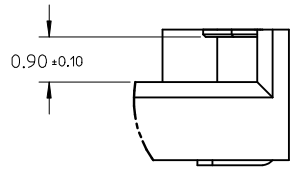
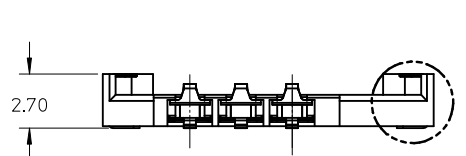
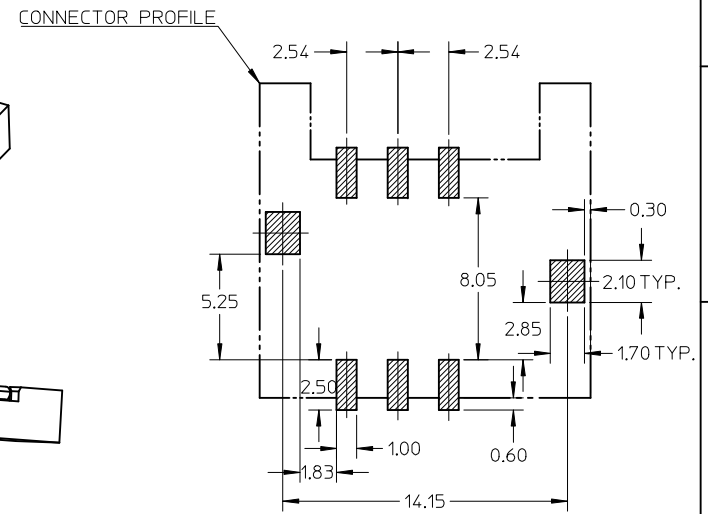
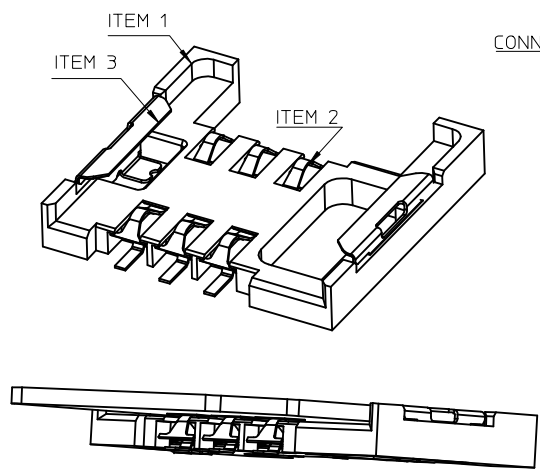
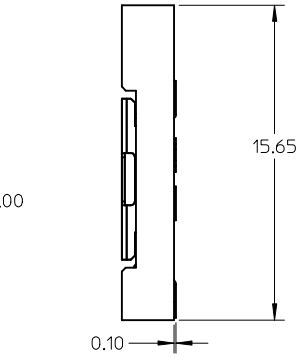
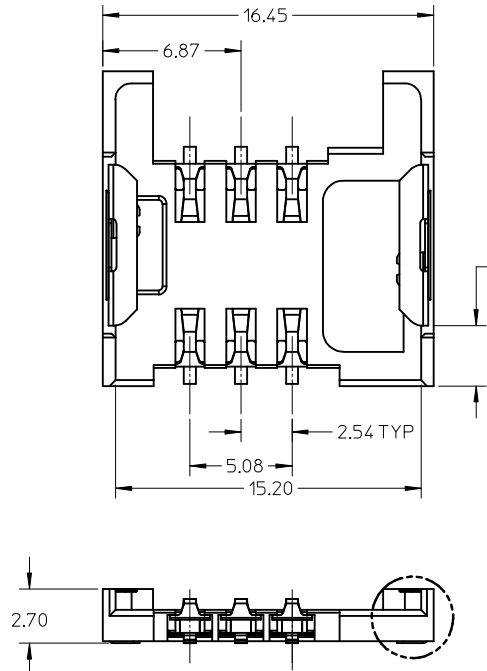
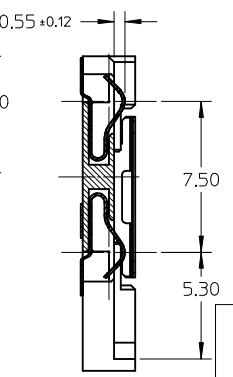
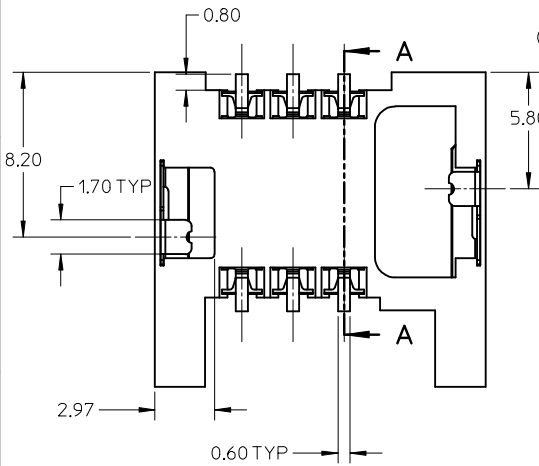


10 9 8 7 6 5 4 3 2 1



DETAIL1

DETAIL1



SECTION A-A

ITEM	NAME	MATERIAL NO.
1	HOUSING	472730002
2	TERMINAL	472730003
3	SHELL	472730004

NOTES:

- MATERIAL:
HOUSING: LCP, GLASS-FILLED, UL 94V-0, COLOR .BLACK.
TERMINAL: 0.12MM PHOSPHOR BRONZE.
SHELL: STAINLESS STEEL.
- FINISH:
TERMINAL CONTACT AREA: 0.75 MICRON GOLD MIN OVERALL 1.25 MICRON NICKEL MIN.
TERMINAL SOLDER AREA: GOLD FLASH OVERALL 1.25 MICRON NICKEL MIN.
SHELL: GOLD FLASH OVER SOLDERING PAD, 2.0 MICRON NICKEL MIN. OVERALL
- COPLANARITY: 0.1MM MAX AMONG SOLDER TAILS AND FITTING NAILS.
- PRODUCT SPECIFICATION: PS-47273-001.
- PRODUCT COMPLIANT TO ROHS DIRECTIVE 2002/95/EC AND ELV DIRECTIVE 2000/53/EC

REVISED
EC NO: SH2008-0256
DRWN: YPWU 2007/11/05
CHKD:
APPR:

QUALITY SYMBOLS
▽=0
C=0

GENERAL TOLERANCES (UNLESS SPECIFIED)
mm INCH
4 PLACES ± --- ± ---
3 PLACES ± --- ± ---
2 PLACES ± 0.2 ± ---
1 PLACE ± --- ± ---
ANGULAR ± 3 °
DRAFT WHERE APPLICABLE MUST REMAIN WITHIN DIMENSIONS

DIMENSION STYLE
MM ONLY
DRAWN BY DATE
OYANG 2005-08-31
CHECKED BY DATE
Y. J WU 2005-08-31
APPROVED BY DATE
VINCENT 2005-08-31
MATERIAL NO.
472730001

SCALE
4:1
DESIGN UNITS
METRIC
THIRD ANGLE PROJECTION
TITLE
SIM CARD CONNECTOR SALES DRAWING
MOLEX INCORPORATED
DOCUMENT NO.
SD-47273-001
SHEET NO.
1 OF 1
THIS DRAWING CONTAINS INFORMATION THAT IS PROPRIETARY TO MOLEX INCORPORATED AND SHOULD NOT BE USED WITHOUT WRITTEN PERMISSION

9 8 7 6 5 4 3 2 1