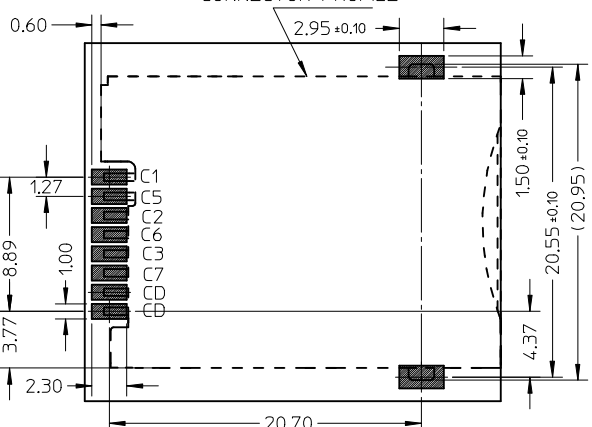
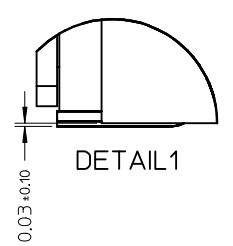
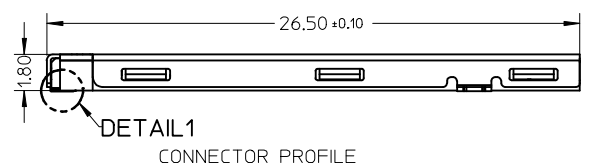
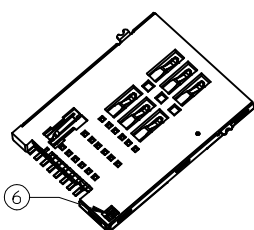
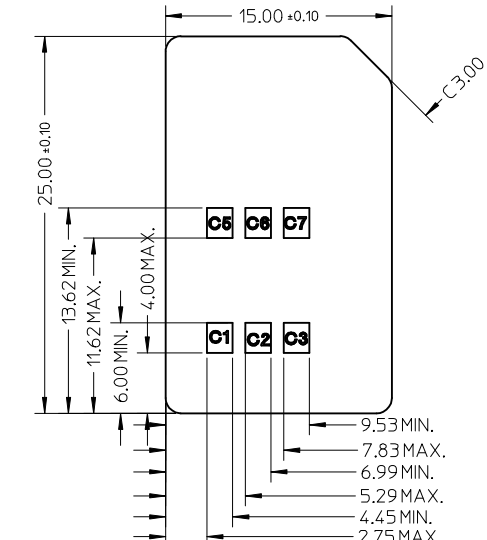
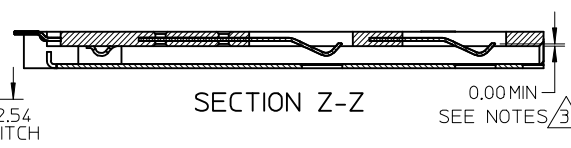
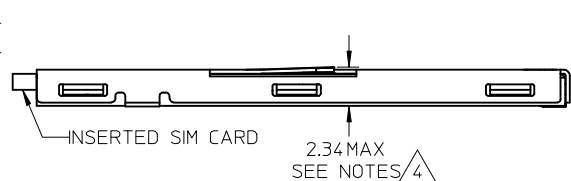
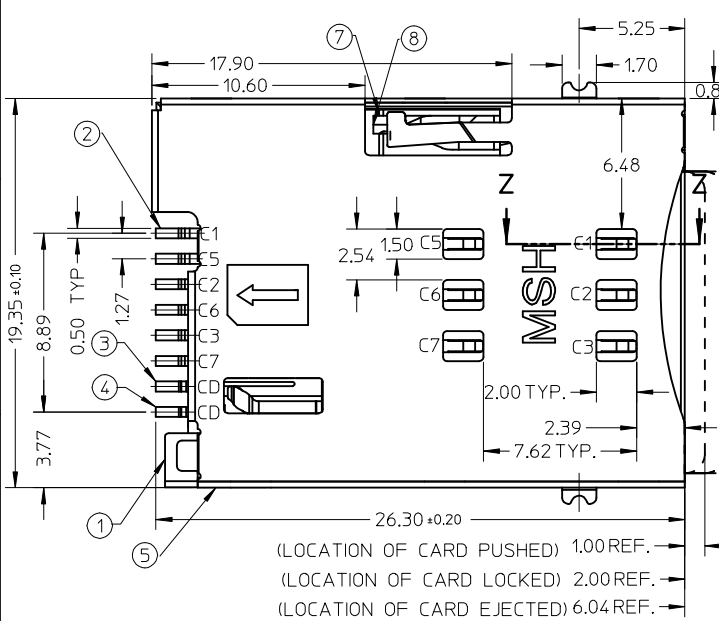


- NOTES
- FINISH
    - 1-1 TERMINAL :  
50~200μm NICKEL UNDER PLATED  
15μm MIN GOLD PLATING ON CONTACT AREA  
3μm MIN GOLD FLASH ON SOLDERING AREA
    - 1-2 SHELL :  
50~200μm NICKEL UNDER PLATED  
3μm MIN GOLD FLASH ON SOLDERING AREA
    - 1-3 DETECT PIN :  
50~200μm NICKEL UNDER PLATED  
3μm MIN GOLD PLATING ON CONTACT AREA  
3μm MIN GOLD FLASH ON SOLDERING AREA
  - DETECT SWITCH: INSERT CARD=ON (NORMAL=OPEN)
  - I.E., TERMINAL TIP WILL SINK INTO HOUSING.
  - SPRING RISE UP DURING PUSH-PUSH PERIOD
  - PRODUCT COMPLIANT TO ROHS DIRECTIVE 2011/65/EU AND ELV DIRECTIVE 2000/53/EC
  - SOLDERTAIL(10X) COPLANARITY 0.10MM MAX (BEFORE REFLOW)
  - PRODUCT SPECIFICATION: PS-47553-201
  - PACKAGE DRAWING: PK-47553-001



CARD INSERTED		WITHOUT CARD	
NO.	DESCRIPTION	Q'TY	MATERIAL
1	HOUSING	1	HIGH TEMPERATURE THERMOPLASTIC
2	TERMINAL	6	COPPER ALLOY
3	DETECT PIN LOWER	1	COPPER ALLOY
4	DETECT PIN UPPER	1	COPPER ALLOY
5	SHELL	1	STAINLESS STEEL
6	COIL SPRING	1	PIANO WIRE
7	HEART CAM	1	HIGH TEMPERATURE THERMOPLASTIC
8	CAM PIN	1	STAINLESS STEEL

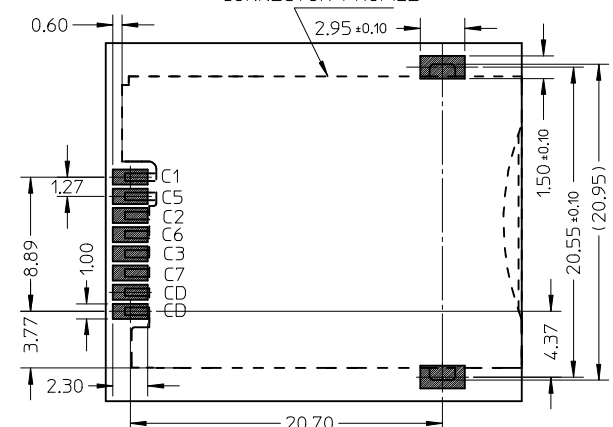
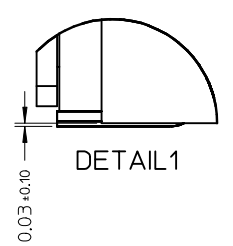
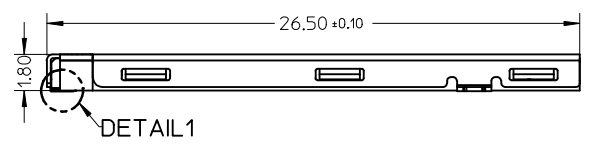
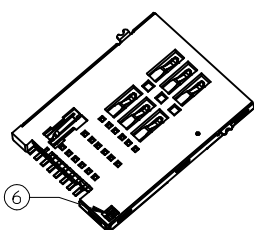
<b>COPLANARITY ADDED</b> EC NO: S2013-0560 DRW:NEANG 2013/02/15 CHKD:JTAN02 2013/03/25 APPR:KHLIM 2013/03/25	QUALITY SYMBOLS F=0 F=0 F=0	GENERAL TOLERANCES (UNLESS SPECIFIED)		DIMENSION STYLE <b>MM ONLY</b>		SCALE NTS	DESIGN UNITS METRIC	THIRD ANGLE PROJECTION			
		4 PLACES ± --- ± --- 3 PLACES ± --- ± --- 2 PLACES ± 0.15 ± --- 1 PLACE ± --- ± ---	mm    INCH	DRAWN BY LHSHEEN	DATE 2006/09/07	TITLE <b>PUSH PUSH 6 PINS SIM CONN. WITH DETECT PIN SALES DRAWING</b>					
		ANGULAR ± ---°		CHECKED BY XUXIANG	DATE 2007/04/16	MOLEX INCORPORATED					
		DRAFT WHERE APPLICABLE MUST REMAIN WITHIN DIMENSIONS		APPROVED BY JENNYCHEN	DATE 2007/04/16	MATERIAL NO. <b>475530001</b>	DOCUMENT NO. <b>SD-47553-001</b>	SHEET NO. <b>1 OF 1</b>			



APPLICABLE CARD SIZE THICKNESS: 0.76±/-0.08

NOTES

1. FINISH
  - 1-1 TERMINAL :
    - 50~200μ NICKEL UNDER PLATED
    - 15μ MIN GOLD PLATING ON CONTACT AREA
    - 3μ MIN GOLD FLASH ON SOLDERING AREA
  - 1-2 SHELL :
    - 50~200μ NICKEL UNDER PLATED
    - 3μ MIN GOLD FLASH ON SOLDERING AREA
  - 1-3 DETECT PIN :
    - 50~200μ NICKEL UNDER PLATED
    - 3μ MIN GOLD PLATING ON CONTACT AREA
    - 3μ MIN GOLD FLASH ON SOLDERING AREA
2. DETECT SWITCH: INSERT CARD=ON (NORMAL=OPEN)
3. I.E., TERMINAL TIP WILL SINK INTO HOUSING.
4. SPRING RISE UP DURING PUSH-PUSH PERIOD
5. PRODUCT COMPLIANT TO ROHS DIRECTIVE 2011/65/EU AND ELV DIRECTIVE 2000/53/EC
6. SOLDER TAIL(10X) COPLANARITY 0.10MM MAX (BEFORE REFLOW)
7. PRODUCT SPECIFICATION: PS-47553-201
8. PACKAGE DRAWING: PK-47553-001



RECOMMENDED PCB LAYOUT TOLERANCE +/-0.05MM

NO.	DESCRIPTION	Q'TY	MATERIAL
1	HOUSING	1	HIGH TEMPERATURE THERMOPLASTIC
2	TERMINAL	6	COPPER ALLOY
3	DETECT PIN LOWER	1	COPPER ALLOY
4	DETECT PIN UPPER	1	COPPER ALLOY
5	SHELL	1	STAINLESS STEEL
6	COIL SPRING	1	PIANO WIRE
7	HEART CAM	1	HIGH TEMPERATURE THERMOPLASTIC
8	CAM PIN	1	STAINLESS STEEL

<b>COPLANARITY ADDED</b> EC NO: S2013-0560 DRW: NEANG 2013/02/15 CHKD: JIAN02 2013/03/25 APPR: KHL IM 2013/03/25	QUALITY SYMBOLS F=0 F=0 F=0	GENERAL TOLERANCES (UNLESS SPECIFIED)		DIMENSION STYLE <b>MM ONLY</b>		SCALE NTS	DESIGN UNITS METRIC	THIRD ANGLE PROJECTION		
		4 PLACES	±---	±---	DRAWN BY	DATE	TITLE <b>PUSH PUSH 6 PINS SIM CONN. WITH DETECT PIN SALES DRAWING</b>  <b>MOLEX INCORPORATED</b> DOCUMENT NO. SD-47553-001 SHEET NO. 1 OF 1			
		3 PLACES	±---	±---	CHECKED BY	DATE				
		2 PLACES	±0.15	±---	XU XIANG	2007/04/16				
1 PLACE	±---	±---	APPROVED BY	DATE						
DRAFT WHERE APPLICABLE MUST REMAIN WITHIN DIMENSIONS		ANGULAR ±---°		MATERIAL NO. <b>475530001</b>						