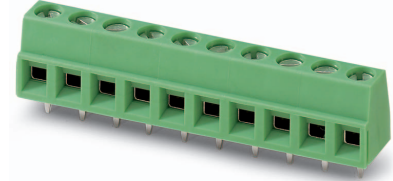


# Data sheet

Order No.: 1729131

Type: MKDSN 1,5/ 3-5,08

PCB terminal block, Screw connection with tension sleeve



The figure shows a 10-position version of the product

## 1 Main features



• No. of pos.	3	• Nominal current	13.5 A
• Conductor cross section	1.5 mm <sup>2</sup>	• Nominal voltage	400 V
• Color	green (6021)	• Connection direction	0 °
• Pitch	5.08 mm	• Type of packaging	packed in cardboard
• Connection method	Screw connection with tension sleeve		

## 2 Your advantages

- ✓ Well-known connection principle allows worldwide use
- ✓ Low temperature rise, thanks to maximum contact force
- ✓ Allows connection of two conductors
- ✓ Extremely small design for the respective conductor cross section
- ✓ The latching on the side enables various numbers of positions to be combined



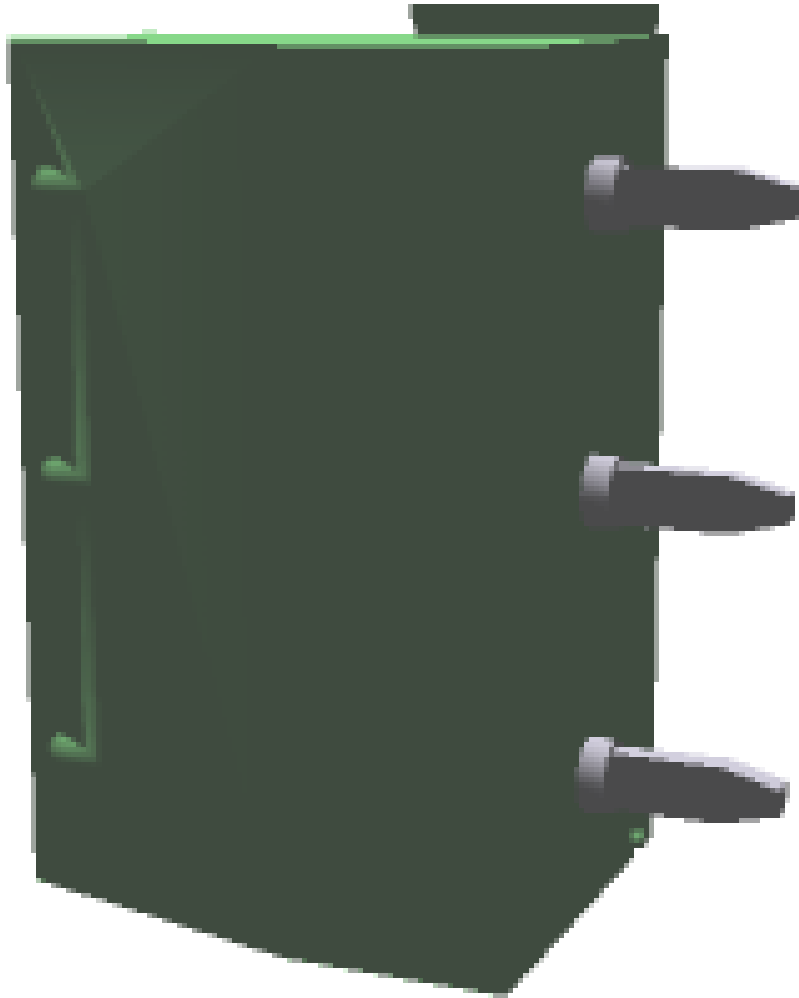
Make sure you always use the latest documentation.

It can be downloaded at: [phoenixcontact.net/product/1729131](https://phoenixcontact.net/product/1729131)

**3 Table of contents**

1	Main features.....	1
2	Your advantages .....	1
3	Table of contents .....	2
4	3D model in PDF can be activated (Acrobat Reader only).....	3
5	General Technical Data .....	4
	5.1 item properties .....	4
	5.2 Connection capacity .....	4
	5.3 Connection capacity AWG .....	4
6	Material properties.....	4
	6.1 Material of metal parts.....	4
	6.2 Material of plastic parts .....	5
7	Dimensions.....	6
	7.1 Dimensions for the product .....	6
8	Series drawing.....	7
9	Product drawing .....	8
	9.1 Dimensions for PCB design.....	9
10	Application.....	9
	10.1 General information.....	9
11	Packaging information .....	9
	11.1 Temperature limit values .....	9
12	Mechanical tests.....	10
	12.1 Pull-out test .....	10
	12.2 Check for damage to conductor or loosening .....	10
13	Electrical tests .....	11
	13.1 Electrical data .....	11
	13.2 Air and creepage distances .....	11
	13.3 Short-time withstand current test .....	11
	13.4 Aging test (climatic impact and corrosion testing).....	11
	13.5 Mechanical connection test for the PCB terminal block .....	11
	13.6 Temperature rise test.....	12
14	Current carrying capacity/derating curves .....	13
15	Environmental and durability tests .....	14
	15.1 Vibration test .....	14
	15.2 Assessment of fire risk (glow wire test).....	14
16	Approvals / Certificates.....	15
17	Commercial Data.....	16
18	Accessories.....	16

**4 3D model in PDF can be activated (Acrobat Reader only)**



**1729131 MKDSN 1,5/ 3-5,08****5 General Technical Data****5.1 item properties**

Order No.	1729131
Type	MKDSN 1,5/ 3-5,08
Product type	PCB terminal block
Range of articles	MKDSN 1,5
Pitch	5.08 mm
Range of positions	2...30
Number of positions	3
Number of levels	1
Number of connections	3
Number of potentials	3
Connection method	Screw connection with tension sleeve
Screw thread	M3
Drive form screw head	Slotted (L)
Mounting type	Wave soldering
Connection direction of the conductor to the PCB	0 °
Pin layout	Linear pinning
Solder pins per potential	1
Type	PC termination block

**5.2 Connection capacity**

Conductor cross section, solid	0.14 mm <sup>2</sup> ... 1.5 mm <sup>2</sup>
Conductor cross section, flexible	0.14 mm <sup>2</sup> ... 1.5 mm <sup>2</sup>
Conductor cross section flexible, with ferrule without plastic sleeve	0.25 mm <sup>2</sup> ... 1 mm <sup>2</sup>
Conductor cross section flexible, with ferrule with plastic sleeve	0.25 mm <sup>2</sup> ... 1.5 mm <sup>2</sup>
2 conductors with same cross section, solid	0.14 mm <sup>2</sup> ... 0.75 mm <sup>2</sup>
2 conductors with same cross section, stranded	0.14 mm <sup>2</sup> ... 0.75 mm <sup>2</sup>
2 conductors with same cross section, stranded, with ferrule without plastic sleeve	0.25 mm <sup>2</sup> ... 0.5 mm <sup>2</sup>
2 conductors with same cross section, stranded, with TWIN ferrules with plastic sleeve	0.5 mm <sup>2</sup> ... 0.75 mm <sup>2</sup>
Stripping length	6 mm
Tightening torque	0.5 Nm ... 0.6 Nm

**5.3 Connection capacity AWG**

Conductor cross section AWG	26 ... 16
-----------------------------	-----------

**6 Material properties****6.1 Material of metal parts**

Note	WEEE/RoHS-compliant, whisker-free acc. to IEC 60068-2-82/JEDEC JESD 201
Contact material	Cu alloy

**1729131 MKDSN 1,5/ 3-5,08**

Terminal point surface	Nickel (2 - 3 µm Ni) , Tin (5 - 7 µm Sn)
Soldering area surface	Nickel (2 - 3 µm Ni) , Tin (5 - 7 µm Sn)
Surface characteristics	Tin-plated

**6.2 Material of plastic parts**

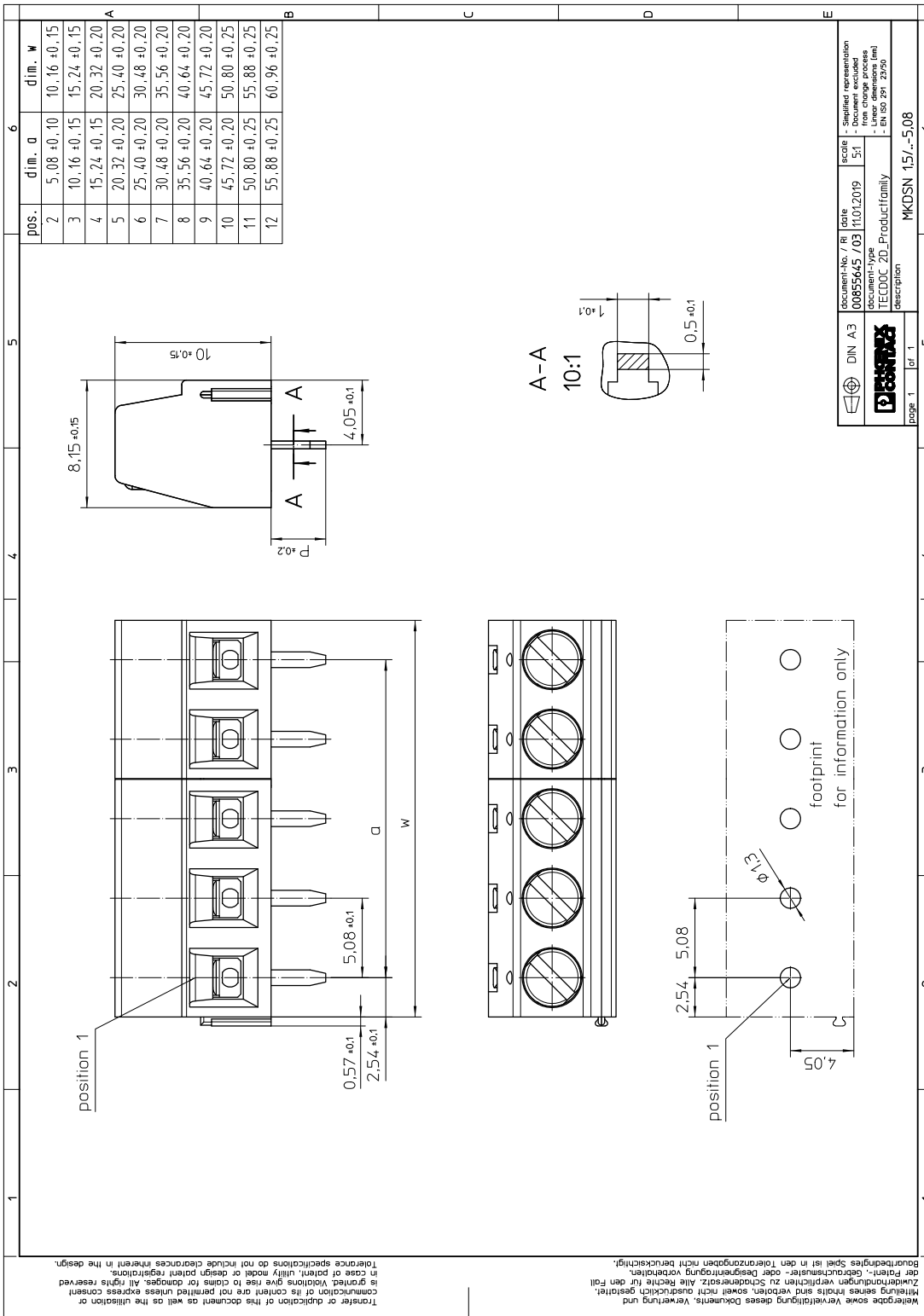
	<b>Housing</b>
Color	green (6021)
Insulating material	PA
Insulating material group	I
CTI according to IEC 60112	600
Flammability rating according to UL 94	V0
Glow wire flammability index GWFI according to EN 60695-2-12	850
Glow wire ignition temperature GWIT according to EN 60695-2-13	775
Temperature for the ball pressure test according to EN 60695-10-2	125 °C

**1729131 MKDSN 1,5/ 3-5,08****7 Dimensions****7.1 Dimensions for the product**

Length	8.1 mm
Width	15.24 mm
Height (without solder pin)	10 mm
Total height	13.5 mm
Solder pin [P]	3.5 mm
Dimension a	10.16 mm

1729131 MKDSN 1,5/ 3-5,08

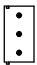

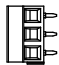



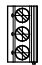
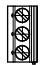
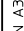

8 Series drawing



DIN A3	document-No. / Ri	date	scale	Simplified representation
	00855645 / 03	11.01.2019	5:1	- from change process
	document-type			- Linear dimensions (mm)
	TECDOC 2D_Productfamily			- EN ISO 291, 2950
page 1	of 1			
				MKDSN 1,5/...-5,08

# 1729131 MKDSN 1,5/ 3-5,08

## 9 Product drawing

1	2	3	4	5	6
A	B	C	D	E	
<p>Transfer or duplication of this document as well as the utilisation or communication of its content are not permitted unless express consent is granted. Violations give rise to claims for damages. All rights reserved in case of patent, utility model or design patent registrations.</p> <p>Wiedergabe sowie Vervielfältigung dieses Dokuments, Verwertung und Weiterverbreitung sind ohne schriftliche Genehmigung von Phoenix Contact verboten. Alle Rechte sind vorbehalten.</p>					
					
					
					
<p>General Information</p> <ul style="list-style-type: none"> <li>- Simplified representation</li> <li>- Document excluded from change process</li> <li>- Linear dimensions (mm)</li> </ul>					
		<p>document-No. / RI 0105518 / 700</p>		<p>date 22.02.2017</p>	
		<p>document-type TECDOC 2D_Productdrawing</p>		<p>scale 1:1</p>	
<p>page 1</p>		<p>of 1</p>		<p>description MKDSN 1,5/ 3-5,08</p>	



**1729131 MKDSN 1,5/ 3-5,08****9.1 Dimensions for PCB design**

Hole diameter	1.3 mm
Pin dimensions	0.5 x 1 mm

**10 Application****10.1 General information**

Note on application	For safe conductor connection, always adhere to a defined tightening torque. Particularly in the case of PCB terminal blocks with two or three positions, the individual solder pin for each contact point cannot compensate for this. That is why the terminal blocks must be supported during conductor connection (held with one hand, support on the housing).
---------------------	--

**11 Packaging information**

Type of packaging	packed in cardboard
Pieces per package	250

**11.1 Temperature limit values**

Ambient temperature (storage/transport)	-40 °C ... 70 °C
Ambient temperature (assembly)	-5 °C ... 100 °C
Ambient temperature (operation)	-40 °C ... 100 °C (Depending on the current carrying capacity/derating curve)

**1729131 MKDSN 1,5/ 3-5,08****12 Mechanical tests****12.1 Pull-out test**

Specification	IEC 60999-1:1999-11
Result	Test passed
Conductor cross section/conductor type/tractive force actual value	0.14 mm <sup>2</sup> / flexible / > 10 N
Conductor cross section/conductor type/tractive force actual value	0.14 mm <sup>2</sup> / solid / > 10 N
Conductor cross section/conductor type/tractive force actual value	1.5 mm <sup>2</sup> / flexible / > 40 N
Conductor cross section/conductor type/tractive force actual value	1.5 mm <sup>2</sup> / solid / > 40 N

**12.2 Check for damage to conductor or loosening**

Specification	IEC 60999-1:1999-11
Result	Test passed

**1729131 MKDSN 1,5/ 3-5,08****13 Electrical tests****13.1 Electrical data**

Rated current / conductor cross section	13.5 A / 1.5 mm <sup>2</sup>
Rated insulation voltage (III/2)	400 V
Rated surge voltage (III/2)	4 kV
Contact resistance	
Degree of pollution	2

**13.2 Air and creepage distances**

Component	PCB terminal block		
Specification	IEC 60947-1:2007-06 + A1:2010-12 + A2:2014-09		
Mains type	unearthed mains		
Insulating material group	I		
Comparative tracking index (IEC 60112:2003-01)	CTI 600		
Rated insulation voltage	250 V	400 V	630 V
Rated surge voltage	4 kV	4 kV	4 kV
Degree of pollution	3	2	2
Overvoltage category	III	III	II
Minimum clearance case A (inhomogeneous field)	3 mm	3 mm	3 mm
Minimum value of the creepage path requirement in acc. with table	3.2 mm	2 mm	3.2 mm

**13.3 Short-time withstand current test**

Specification	IEC 60947-7-4:2013-08
Result	Test passed
Conductor cross section/short-time current	1.5 mm <sup>2</sup> / 60 A

**13.4 Aging test (climatic impact and corrosion testing)**

Specification	IEC 60947-7-4:2013-08
Result	Test passed
Contact resistance R <sub>1</sub>	1.7 mΩ / 1.5 mm <sup>2</sup>
Test sequence 1: low temperature storage	-40 °C / 2 h
Test sequence 2: heat storage	168 h/100°C
Test sequence 3: noxious gas storage (ISO 6988)	KFW 0.2 S/1 cycle
Contact resistance R <sub>2</sub>	1.7 mΩ / 1.5 mm <sup>2</sup>
Rated impulse voltage at sea level Voltage waveform ≥ (1.2/50 μs)	
Power-frequency withstand voltage Voltage waveform ≥ (50/60 Hz)	3.1 kV

**13.5 Mechanical connection test for the PCB terminal block**

Specification	IEC 60947-7-4:2013-08
Result	Test passed

**1729131 MKDSN 1,5/ 3-5,08****13.6 Temperature rise test**

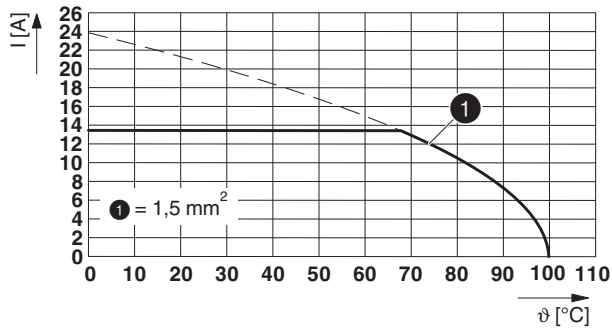
Specification	IEC 60947-7-4:2013-08
Result	Test passed
Requirement temperature-rise test	The sum of ambient temperature and temperature rise of the PCB terminal block shall not exceed the upper limiting temperature.
Conductor cross section/test current/temperature rise	1.5 mm <sup>2</sup> / 13 A / 32.5 K

## 1729131 MKDSN 1,5/ 3-5,08

## 14 Current carrying capacity/derating curves

Specification	IEC 60947-7-4:2013-08
Note	Representation based on IEC 60512-5-2:2002-02
Reduction factor	1
Number of positions	4
Conductor cross section	1.5 mm <sup>2</sup>

Type: MKDSN 1,5/...



**1729131 MKDSN 1,5/ 3-5,08****15 Environmental and durability tests****15.1 Vibration test**






Specification	IEC 60068-2-6:2007-12
Result	Test passed
Frequency	10 - 150 - 10 Hz
Sweep speed	1 octave/min
Amplitude	0.35 mm (10 - 60.1 Hz)
Acceleration	5 g (60.1 - 150 Hz)
Test duration per axis	2.5 h
Test directions	X-, Y- and Z-axis
Note	The connected conductor loops were guided to the test sample at a distance of approx. 10 cm.

**15.2 Assessment of fire risk (glow wire test)**

Specification	IEC 60695-2-10:2013-04		
Result	Test passed		
Temperature	850 °C		
Time of exposure	5 s		

## 1729131 MKDSN 1,5/ 3-5,08

## 16 Approvals / Certificates

IECEE CB Scheme 	Voltage [V]	Current [A]	Cross section [AWG]	Cross section [mm <sup>2</sup> ]
	250 V	13.5 A	-	1.5
EAC 				
cULus Recognized 	Voltage [V]	Current [A]	Cross section [AWG]	Cross section [mm <sup>2</sup> ]
<b>Usegroup B</b>				
	300 V	10 A	30 - 14	-
Mehrleiteranschluss	300 V	10 A	2x - 18	-
<b>Usegroup D</b>				
	300 V	10 A	30 - 14	-
Mehrleiteranschluss	300 V	10 A	2x - 18	-
DNV GL 				
SEV 	Voltage [V]	Current [A]	Cross section [AWG]	Cross section [mm <sup>2</sup> ]
	250 V	13.5 A	-	1.5

**1729131 MKDSN 1,5/ 3-5,08****17 Commercial Data**

Order No.	1729131
Type	MKDSN 1,5/ 3-5,08
Pieces per package	250
Net weight	2.688 g
GTIN	4017918026004
	Information that applies locally, see link on page 1
Country of origin	Information that applies locally, see link on page 1

**18 Accessories**

Description	Order No.	Type
Actuation tool, for ST terminal blocks, insulated, also suitable for use as a bladed screwdriver, size: 0.6 x 3.5 x 100 mm, 2-component grip, with non-slip grip	1205053	SZS 0,6X3,5
	0804293	SK 5,08/3,8:FORTL.ZAHLEN
	0805412	SK 5,08/3,8:UNBEDRUCKT
	0805085	SK 5,08/3,8:SO
Marker pen, for manual labeling of unprinted Zack strips, smear-proof and waterproof, line thickness 0.5 mm	1051993	B-STIFT