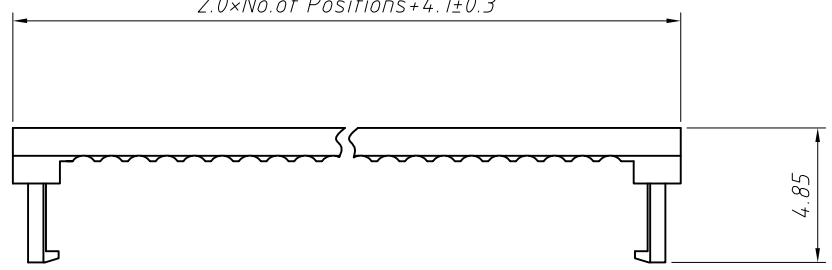
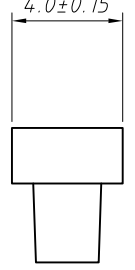


1  
RoHS Compliance

2.0×No.of Positions+4.1±0.3



4.0±0.15

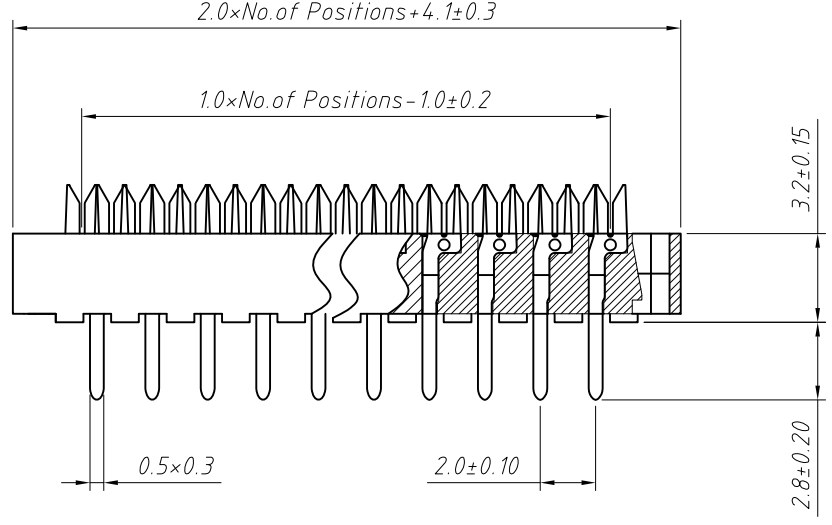


**Material:**  
 Housing: PBT,UL 94V-0  
 Contacts: Brass  
 Plating: Au or Sn Over Ni  
 Cable: 1.27mm (0.050") pitch flat cable

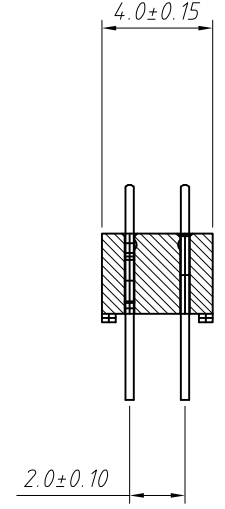
**Electrical Characteristics:**  
 Current Rating: 1.0 AMP  
 Withstand Voltage: 500V AC  
 Insulator Resistance: 1000M Ohm min  
 Contact Resistance: 20m Ohm max.  
 Operating Temperature: -40°C ~ +105°C  
 Max.Processing Temp: 180°C for 30-60 seconds  
 (200°C for 10 seconds)

2.0×No.of Positions+4.1±0.3

1.0×No.of Positions-1.0±0.2

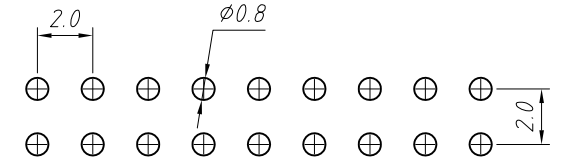
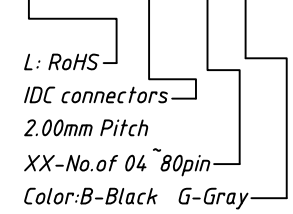


4.0±0.15



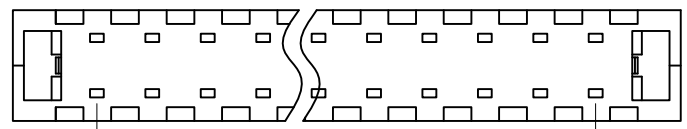
**Order Information:**

L-KLS1-205B-XX-B



PCB LAYOUT

2.0×No.of Positions/2-2.0±0.2



ANGLE TOLERANCE	PROJECTION	Description:		
±3°		2.0mm Pitch Dip Plug Connector		
GENERAL TOLERANCE	UNITS	mm	KLS P/N:	L-KLS1-205B-XX-B
x.x ±0.30	SHEET SIZE	A4		
x.xx ±0.20	Draw:	Daniel	2018-07-10	
x.xxx ±0.10	Check:	Daniel	2018-07-10	

NingBo KLS ELECTRONIC CO.,LTD.