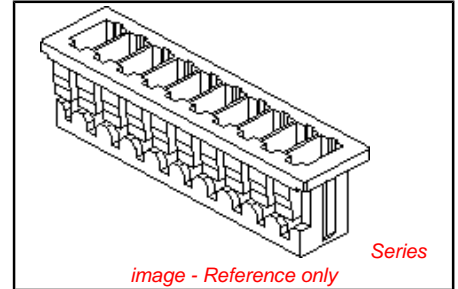


**PLEASE CHECK WWW.MOLEX.COM FOR LATEST PART INFORMATION**

**Part Number:** [0510210700](#)  
**Status:** **Active**  
**Overview:** [picoblade](#)  
**Description:** 1.25mm (.049") Pitch PicoBlade™ Wire-to-Wire and Wire-to-Board Housing, Female, 7 Circuits



**Documents:**

<a href="#">3D Model</a>	<a href="#">Product Specification PS-51021-022 (PDF)</a>
<a href="#">Drawing (PDF)</a>	<a href="#">Product Specification PS-51021-023 (PDF)</a>
<a href="#">Product Specification PS-51021-001 (PDF)</a>	<a href="#">Product Specification PS-51021-025 (PDF)</a>
<a href="#">Product Specification PS-51021-002 (PDF)</a>	<a href="#">Product Specification PS-51021-026 (PDF)</a>
<a href="#">Product Specification PS-51021-009 (PDF)</a>	<a href="#">Product Specification PS-51021-027 (PDF)</a>
<a href="#">Product Specification PS-51021-010 (PDF)</a>	<a href="#">Product Specification PS-51021-028 (PDF)</a>
<a href="#">Product Specification PS-51021-011 (PDF)</a>	<a href="#">RoHS Certificate of Compliance (PDF)</a>

**Agency Certification**

CSA	LR19980
UL	E29179

**General**

Product Family	Crimp Housings
Series	<a href="#">51021</a>
Overview	<a href="#">picoblade</a>
Product Name	PicoBlade™

**Physical**

Circuits (maximum)	7
Color - Resin	Natural
Flammability	94V-0
Gender	Female
Glow-Wire Compliant	No
Lock to Mating Part	Yes
Material - Resin	Polyester
Number of Rows	1
Packaging Type	Bag
Panel Mount	No
Pitch - Mating Interface (in)	0.049 In
Pitch - Mating Interface (mm)	1.25 mm
Stackable	No
Temperature Range - Operating	-40°C to +85°C

**Material Info**

**Reference - Drawing Numbers**

Packaging Specification	SPK-51021
Product Specification	PS-51021-001, PS-51021-002, PS-51021-009, PS-51021-010, PS-51021-011, PS-51021-022, PS-51021-023, PS-51021-025, PS-51021-026, PS-51021-027, PS-51021-028, RPS-51021-001, RPS-51021-002, RPS-51021-003, RPS-51021-004, RPS-51021-006, RPS-51021-007, RPS-51021-008, RPS-51021-009, RPS-51021-010, RPS-51021-011, RPS-51021-013, RPS-51021-014, RPS-51021-018, RPS-51021-020, RPS-51021-021, RPS-51021-023, RPS-51021-024, RPS-51021-025, RPS-51021-028, RPS-51021-030, RPS-51021-031, RPS-51021-032, RPS-51021-033, RPS-51021-034, RPS-51021-037,

<p><b>EU RoHS</b>  <b>ELV and RoHS Compliant</b>  <b>REACH SVHC</b>  <b>Contains SVHC: No</b>  <b>Halogen-Free Status</b>  <b>Not Halogen-Free</b></p>	<p><b>China RoHS</b></p>
<p><b>Need more information on product environmental compliance?</b></p> <p>Email <a href="mailto:productcompliance@molex.com">productcompliance@molex.com</a>          For a multiple part number RoHS Certificate of Compliance, <a href="#">click here</a></p> <p>Please visit the <a href="#">Contact Us</a> section for any non-product compliance questions.</p>	

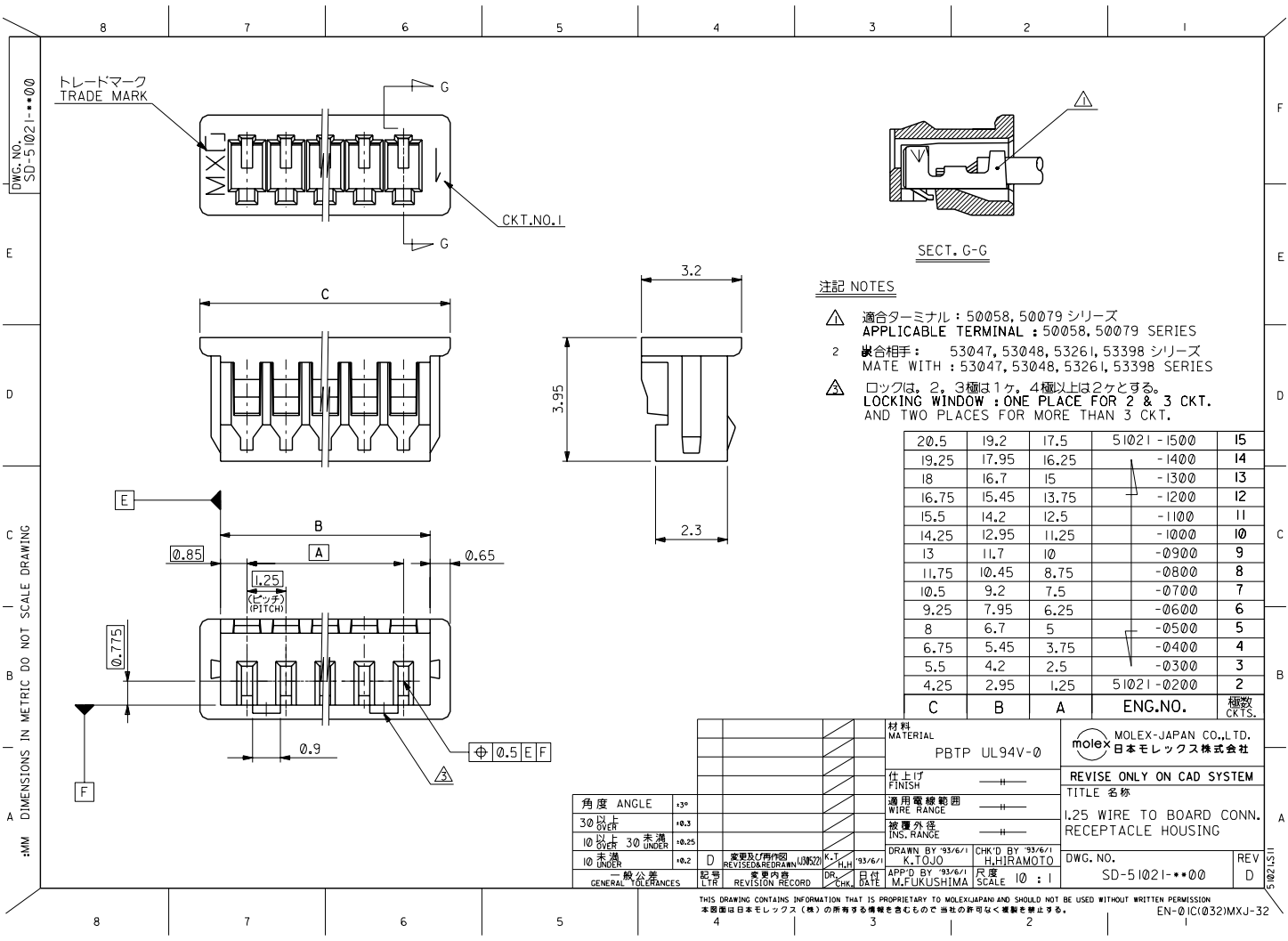
<p><b>Search Parts in this Series</b>  <a href="#">51021Series</a></p>
<p><b>Mates With</b>  <a href="#">51047 Crimp Housing</a>, <a href="#">53047 PCB Header</a>, <a href="#">53048 PCB Header</a>, <a href="#">53261 PCB Header</a>, <a href="#">53398 PCB Header</a></p>
<p><b>Use With</b>  <a href="#">50058 crimp terminal</a>, <a href="#">50079 crimp terminal</a></p>

RPS-51021-038, RPS-51021-039, RPS-51021-040,  
RPS-51021-041, RPS-51021-042, RPS-51021-043,  
RPS-51021-044, RPS-51021-045, RPS-51021-046,  
RPS-51021-047, RPS-51021-048, RPS-51021-051,  
RPS-51021-052, RPS-51021-053, RPS-51021-054,  
RPS-51021-055, RPS-51021-056, RPS-51021-057,  
RPS-51021-058, RPS-51021-059, RPS-51021-060,  
RPS-51021-061, RPS-51021-062, RPS-51021-063,  
RPS-51021-064, RPS-51021-065, RPS-51021-066,  
RPS-51021-067, RPS-51021-068, RPS-51021-071,  
RPS-51021-072, RPS-51021-073, RPS-51021-074,  
RPS-51021-076, RPS-51021-077, RPS-51021-078,  
RPS-51021-079, RPS-51021-081, RPS-51021-084,  
RPS-51021-085, RPS-51021-086, RPS-51021-089,  
RPS-51021-091, RPS-51021-092, RPS-51021-096,  
RPS-51021-097, RPS-51021-101, RPS-53398-002,  
RPS-53398-037, RPS-53398-038  
SD-51021-\*\*00, SD-51021-002

Sales Drawing

This document was generated on 06/01/2010

**PLEASE CHECK [WWW.MOLEX.COM](http://WWW.MOLEX.COM) FOR LATEST PART INFORMATION**



10 9 8 7 6 5 4 3 2 1

F F

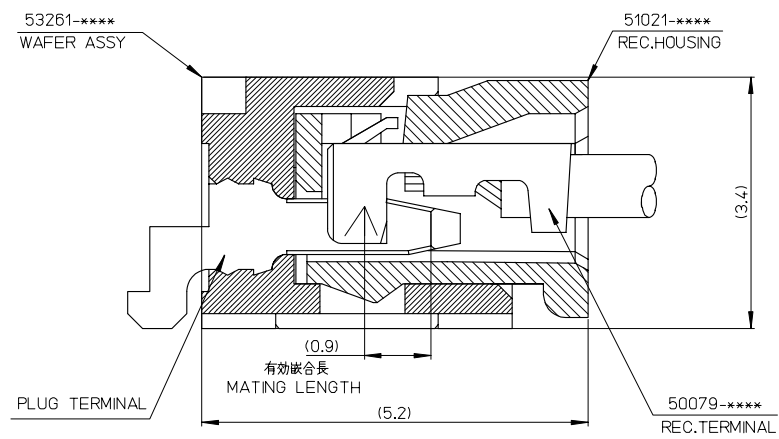
E E

D D

C C

B B

A A



53261-****	WAFER ASSY	MODEL NO./MATERIAL NO.
50079-****	TERMINAL	
51021-****	HOUSING	

RELEASED EC NO. J2006-2426 DRAWN BY A0YAGI CHECKED BY CHIKOYAMAEDA APPROVED BY NUKITA REV 0	GENERAL TOLERANCES (UNLESS SPECIFIED)		DIMENSION STYLE MM ONLY		SCALE ---	DESIGN UNITS METRIC	THIRD ANGLE PROJECTION
	10 UNDER	±---	DRAWN BY Y. A0YAGI	DATE 2006/01/30	TITLE 1.25 W-T-O-B CONN. 51021.53261 MATING CROSS SECTION		
	10 OVER 30 UNDER	±---	CHECKED BY Y. MAEDA	DATE 2006/01/30	MOLEX INCORPORATED		
	30 OVER	±---	APPROVED BY N. UKITA	DATE 2006/01/30	MATERIAL NO. SEE CHART	DOCUMENT NO. SD-51021-002	SHEET NO. 1 OF 1
ANGULAR ±---°		DRAFT WHERE APPLICABLE MUST REMAIN WITHIN DIMENSIONS		THIS DRAWING CONTAINS INFORMATION THAT IS PROPRIETARY TO MOLEX INCORPORATED AND SHOULD NOT BE USED WITHOUT WRITTEN PERMISSION			