

## Box Headers \* Box Header with Latch

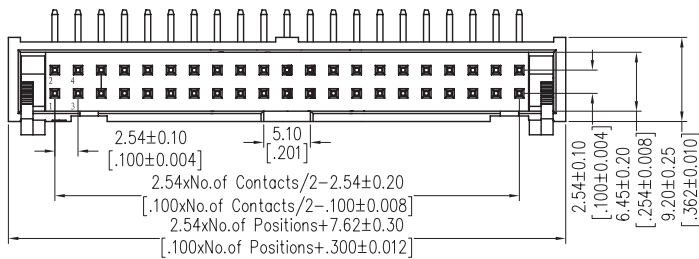
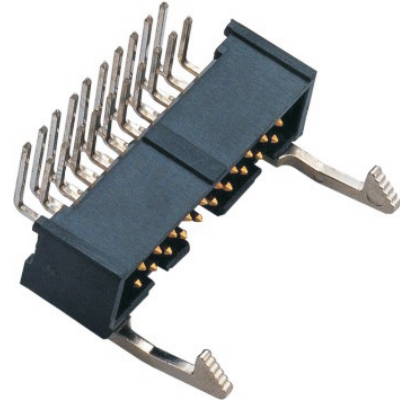
KLS1-202G 2.54mm Ejector Header 90° Metal Latch H=9.8mm

### Material:

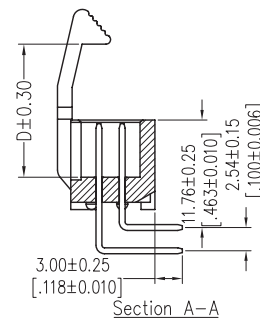
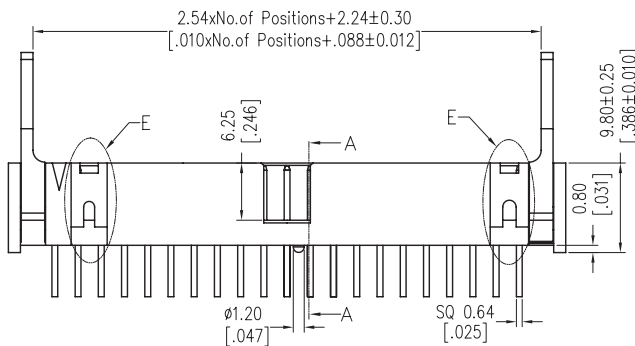
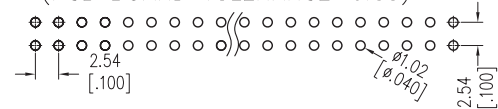
Contact Material: Brass  
 Contact plating: Au Or Sn over Ni  
 Latch plating: Ni  
 Latch Material: Zinc Alloy  
 Insulator Material: PBT or PA9T+30%G.F UL94V-0  
 Above 20 Poles With "E" Profile.

### Electrical Characteristics:

Current Rating: 3.0 AMP  
 Withstand Voltage: 1000V AC/DC  
 Insulator Resistance: 1000M Ohm min  
 Contact Resistance: 20m Ohm max  
 Operating Temperature: -40°C~+105°C

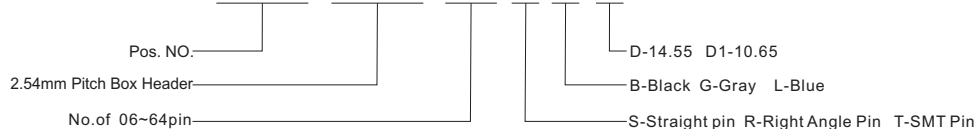


Recommended P.C.B Layout (Top Side)  
 (PCB BOARD TOLERANCE ±0.05)



## ORDER INFORMATION

Product NO.: KLS1-202G-XX-R-B-D



## Box Headers \* Box Header with Latch

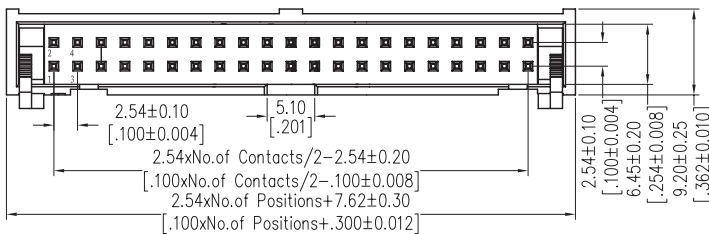
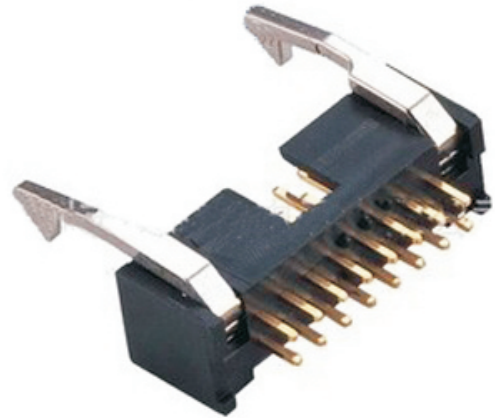
### KLS1-202G 2.54mm Ejector Header 180° DIP Type

**Material:**

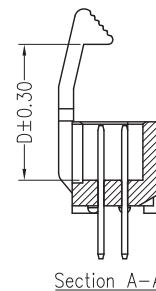
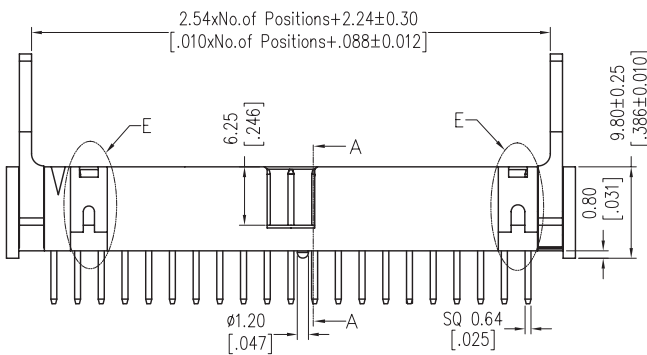
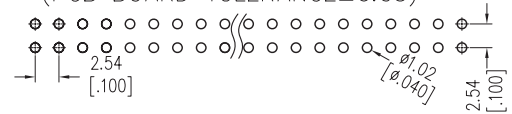
Contact Material: Brass  
 Contact plating: Au Or Sn over Ni  
 Latch plating: Ni  
 Latch Material: Zinc Alloy  
 Insulator Material: PBT or PA9T+30%G.F UL94V-0  
 Above 20 Poles With "E" Profile.

**Electrical Characteristics:**

Current Rating: 3.0 AMP  
 Withstand Voltage: 1000V AC/DC  
 Insulator Resistance: 1000M Ohm min  
 Contact Resistance: 20m Ohm max  
 Operating Temperature: -40°C~+105°C



Recommended P.C.B Layout (Top Side)  
 (PCB BOARD TOLERANCE ±0.05)



## ORDER INFORMATION

Product NO.: **KLS1-202G-XX-S-B-D**



## Box Headers \* Box Header with Latch

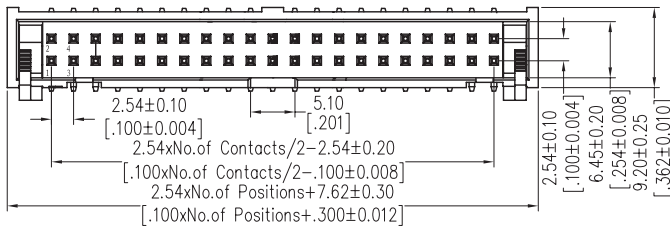
KLS1-202G 2.54mm Ejector Header SMT Metal Latch H=9.8mm

### Material:

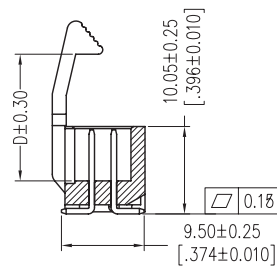
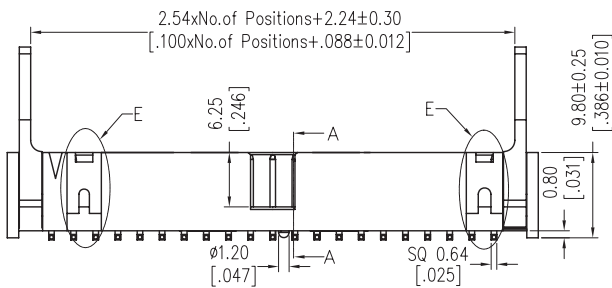
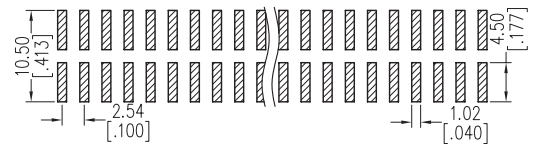
Contact Material: Brass  
Contact plating: Au Or Sn over Ni  
Insulator Material: PA9T+30%G.F UL94V-0  
Above 20 Poles With "E" Profile.

### Electrical Characteristics:

Current Rating: 3.0 AMP  
Withstand Voltage: 1000V AC/DC  
Insulator Resistance: 1000M Ohm min  
Contact Resistance: 20m Ohm max  
Operating Temperature: -40°C~+105°C



Recommended P.C.B Layout (Top Side)  
(PCB BOARD TOLERANCE ±0.05)



## ORDER INFORMATION

Product NO.: KLS1-202G-XX-T-B-D

