

# RTK0EM0000B14030BJ

## Schematic

- 01 : Contents
- 02 : Power supply and PFC
- 03 : PFC control
- 04 : IGBT module
- 05 : Current sensing and overtemperature detection
- 06 : Control voltage
- 07 : Inverter Connector
- 08 : IF connector
- 09 : History

Supplementary explanation :

DNF: unmounted part

Access point : <horizontal, vertical, page>

Ex.

< 4 C 3 >

page

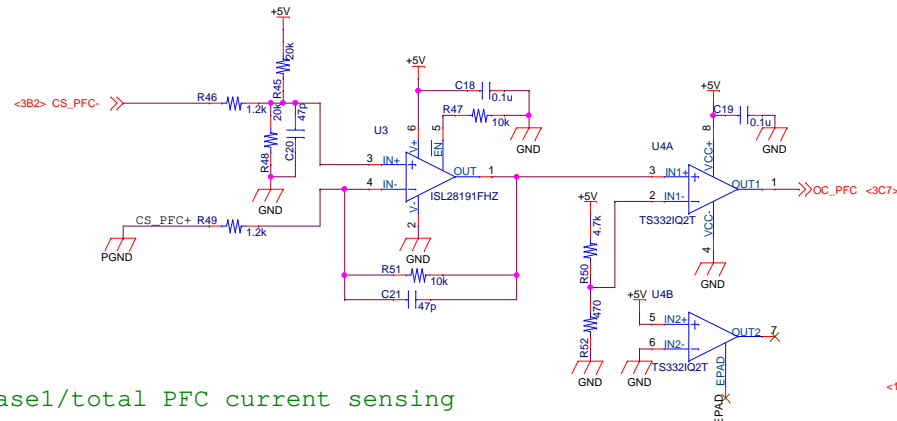
vertical

horizontal

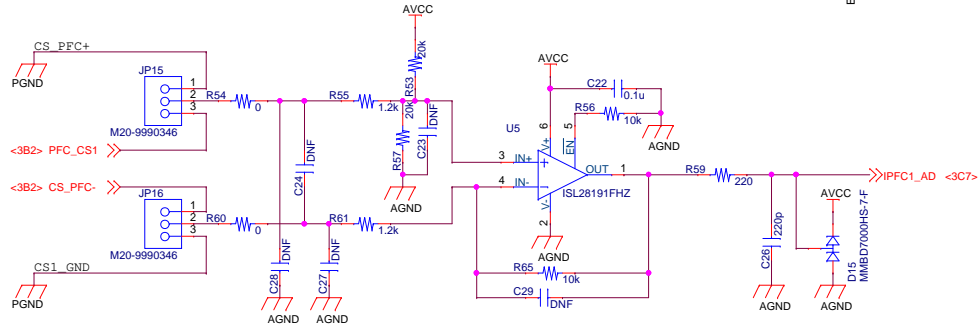
Title		
RTK0EM0000B14030BJ schematic		
Size	Document Number	Rev
A3	R12TU0261EJ0100	1.00
Date:	Monday, January 15, 2024	Sheet 1 of 9



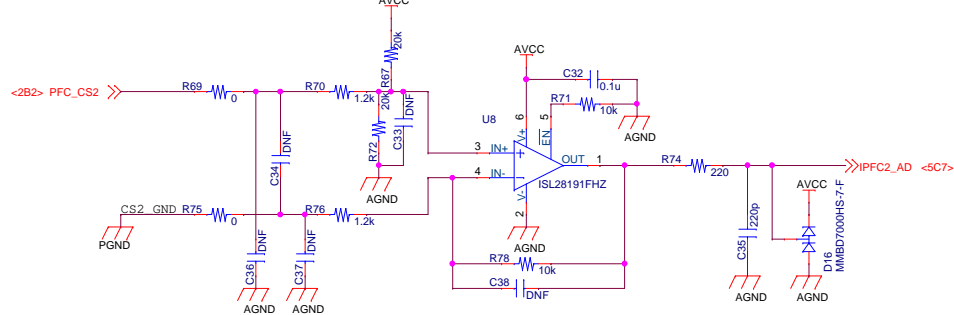
# PFC over current detection



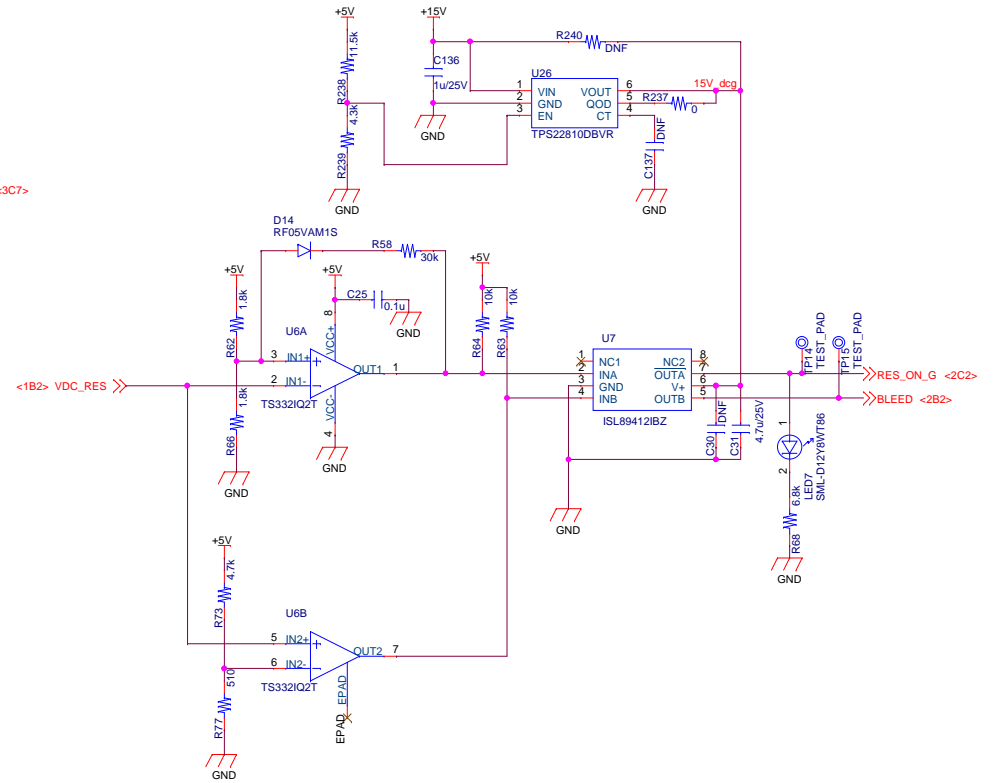
# phase1/total PFC current sensing



# phase2 PFC current sensing



# Over voltage protection and bleeder control

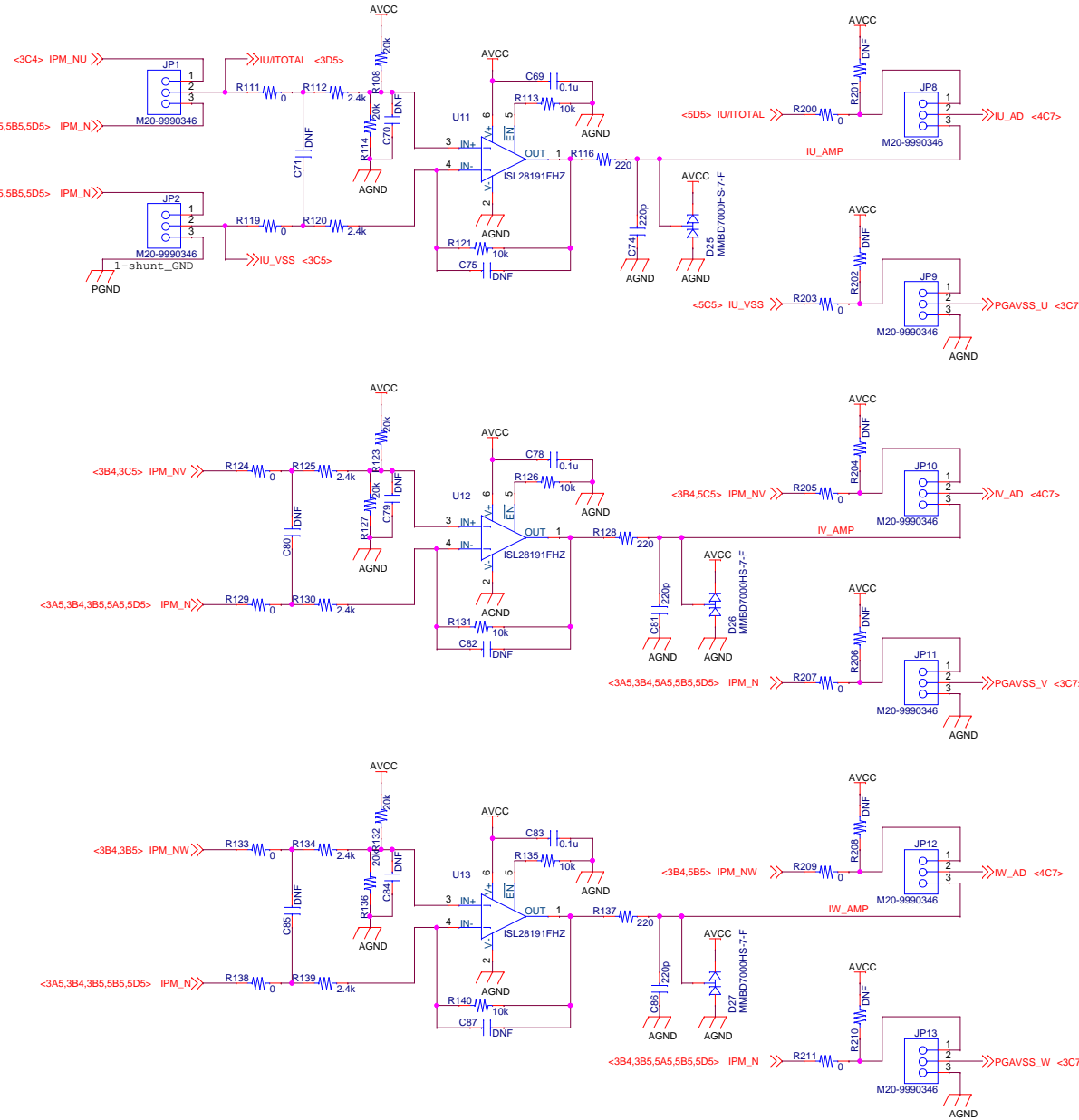


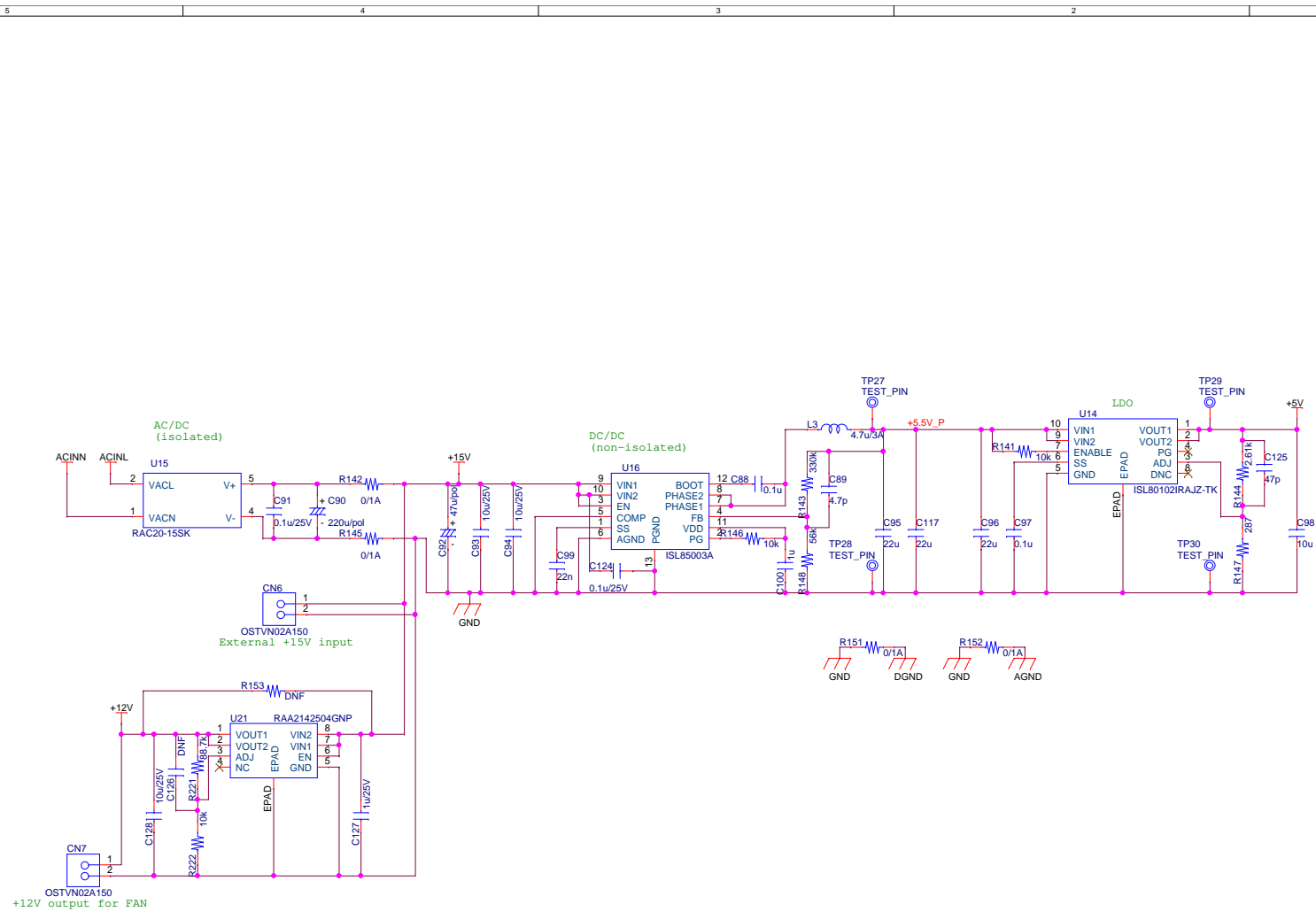
Title			RTK0EM0000B14030BJ schematic
Size	Document Number	Rev	
A3	R12TU0261EJ0100	1.00	
Date:	Monday, January 15, 2024	Sheet	3 of 9



## Phase current sensing (1-/3-shunt)

## Over temperature detection

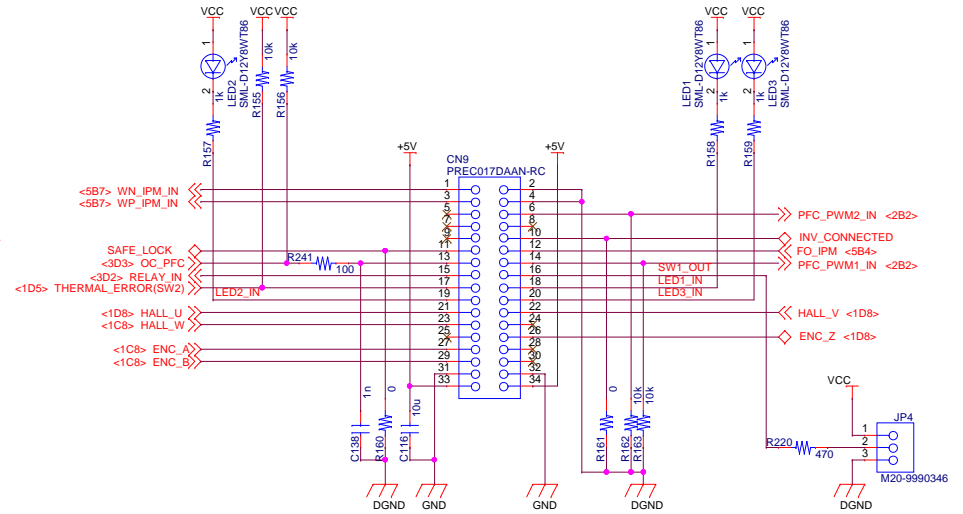
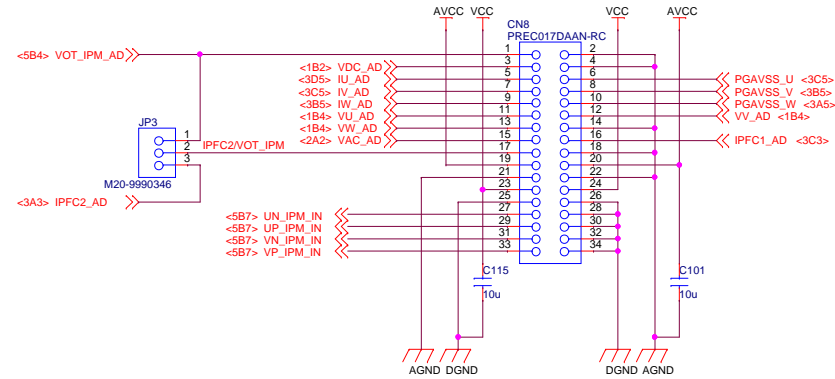




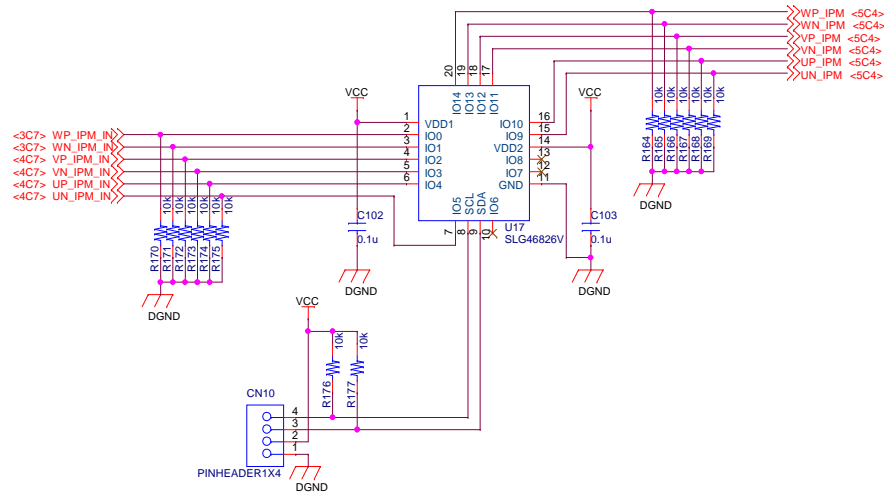
Title		
RTK0EM0000B14030BJ schematic		
Size	Document Number	Rev
A3	R12TU0261EJ0100	1.00
Date:	Monday, January 15, 2024	Sheet 6 of 9

## CPU-INV connector

straight pin-header  
for cable connection



## PWM overlap protection



Title		
RTK0EM0000B14030BJ schematic		
Size	Document Number	Rev
A3	R12TU0261EJ0100	1.00
Date:	Monday, January 15, 2024	Sheet 7 of 9





5

4

3

2

1

History

Rev.	Date	Page	Summary
1.00	2024/1/15	—	First edition

</