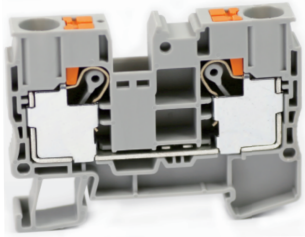


Push-in terminal block-UJ6-10 - 421510





Push-in terminal block , rated voltage : 1000V , Max. operating current : 57A , connection method : spring connection , number of connections : 2 , crimping range : 1.5mm² -16 mm² , AWG : 16-6 , thickness:10.2mm , height:67.7mm , color : grey , mounting type : TH35-7.5、 TH35-15

Product parameter

Parameter	Data
Packing unit (PCS)	40
NW per piece(g)	26.9
Layers	1
Number of connections	2
Rated cross section(mm ²)	10
Color	grey
Insulation material	PA
Flame retardant grade	V0
Rated voltage(V)	1000
Rated current(A)	57
Temperature of insulation material	-40 ~ +125
Wire feed	Above the terminal

Product certification

Parameter	Data
Certification logo	
Certification logo	
Certification logo	

Parameter	Data
	RoHS

Technical data

Parameter	Data
Connection Method	Spring connection
Stripping length(mm)	17
Solid conductors(mm ²)	1.5-16
Solid conductors AWG	16-6
Stranded conductors(mm ²)	1.5-10
Stranded conductors AWG	16-8
Connection in acc. with standard	IEC 60947-7-1
Operating temperature ()	-40 ~ +105
Ambient temperature (storage/transportation) ()	-25 ~ +55
Relative humidity	30% ~ 90%

Dimension

Parameter	Data
Width(mm)	67.7
Thickness(mm)	10.2
Height(mm)	49.6

Business data

Parameter	Data
End cover -UJ6-10G - 422120-Packing unit (PCS)	50
End cover -UJ6-10G - 422120-NW per piece(g)	4.4
End cover -UJ6-10G - 422120-Width(mm)	74
End cover- UJ6-10G - 422120-Thickness(mm)	2.2
End cover- UJ6-10G - 422120-Height(mm)	43.5