

MYZR-RK3288-CB314 Hardware Introduction

来自明远智睿的wiki

MYZR-RK3288_CB314 view

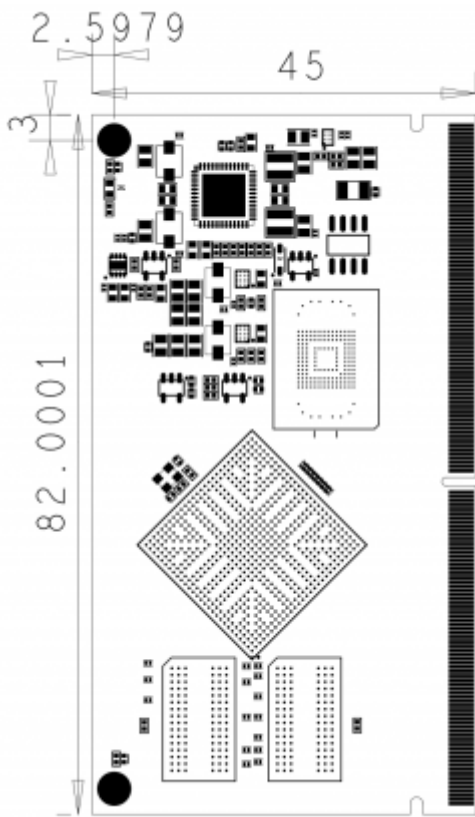
Front view



Rear view



Size



MYZR-RK3288_CB314 parameter

Master control platform detailed parameters

- 1. The quad-core cortex-a17 has a maximum frequency of 1.8GHz
- 2. Mali-T764 GPU, AFBC (frame buffer compression)
- 3. Support OpenGL es1.1/2.0/3.1, OpenCL, DirectX9.3
- 4. Supports 4K 10bit VP9/H265/H264 video decoding up to 60fps
- 5. 1080P multi-format video decoding (vc-1, mpeg-1/2/4, VP8)
- 6. Video post-processor: anti-interleaving, de-noising, edge/detail/color optimization
- 7. Support RGB, Dual LVDS, Dual mipi-dsi, EDP display interface, maximum resolution 3840*2160
- 8. HDMI 2.0 supports 4K 60Hz display and HDCP 1.4/2.2
- 9. ARM TrustZone (TEE), Secure Video Path, Cipher Engine, Secure boot
- 10. Dual-channel 64bit DDR3-1333/DDR3L-1333
- 11. Support for MLC NAND Flash, EMMC 4.51
- 12. Built-in 13M ISP, support MIPI CSI-2 and DVP interface
- 13. Dual channel SDIO 3.0 interface
- 14. TS/CSA2.0, support digital TV function

Hardware configuration

Core board main model	CPU	Memory	Storage	boot mode	burning mode	others
MYZR-RK3288_CB314	RK3288	1G/2G	eMMC:4G~32G	eMMC	Key entry	standard configuration: memory 1G, storage 4G

Temperature range

Operating temperature

- commercial
0°C ~ 70°C

Storage temperature

-40°C ~ 125°C

Operating system supported

- Kernel: Linux-3.10.79
- Kernel:Andorid 5.1
- Kernel:ubuntu14.04

Hardware interface

Display module	HDMI	1 way	HDMI 2.0
	Dual LVDS	1 way	10 data lanes and 2 clock lane
	RGB	1 way	24 bit
	Dual MIPI-DSI	1 way	4 channels, up to 1920x1080 at 60Hz
	EDP	1 way	Support 4Kx2K @ 30fps
Camera module	CIF	1 way	Support up to 5M pixels
	MIPI-CSI	1 way	Maximum input resolution of 14M(4416x3312) pixels
	DVP	1 way	Maximum input resolution of 14M(4416x3312) pixels
Ethernet	RGMII	1 way	support 10/100/1000Mbps
audio	I2S	1 way	Up to 8 channels
PCI Express	PCIe	1 way	1-lane each
storage	SD/MMC card	1 way	4/8-bit
USB	USB OTG	1 way	480 Mbps
	USB HOST	2 way	480 Mbps
SPI	SPI	2 way	up to 52 Mbit/s
UART	UART	4 way	up to 4 Mbps
ADC	ADC	2 way	Support single-channel 8bits/10bits interface
I2C	I2C	5 way	up to 400Kbit/s
debug	JTAG	1 way	JTAG debug

Power Supply

5V input

Definition of pin

No.	Pin name	Voltage	No.	Pin name	Voltage
P1	GND	0V	S1	GND	0V
P2	GND	0V	S2	RGMII_INT	1.8V
P3	GND	0V	S3	NFC_WAKE	1.8V
P4	RGMII_RXD2	3.3V	S4	NFC_REG_ON	3.3V
P5	RGMII_TXD1	3.3V	S5	SPI0_CSn0	3.3V
P6	RGMII_RXD3	3.3V	S6	SPI0_CSn0	3.3V
P7	RGMII_RXDV	3.3V	S7	NFC_HOST_WAKE	3.3V
P8	RGMII_TXD0	3.3V	S8	SDMMC_D3	3.3V
P9	RGMII_TXEN	3.3V	S9	SDMMC_CMD	3.3V
P10	RGMII_RXER	3.3V	S10	SDMMC_D2	3.3V
P11	GND	0V	S11	SDMMC_DET	3.3V
P12	RGMII_CLK	3.3V	S12	SDMMC_D1	3.3V
P13	GND	0V	S13	SDMMC_CLK	3.3V
P14	RGMII_RXD0	3.3V	S14	SDMMC_D0	3.3V
P15	RGMII_RXD1	3.3V	S15	SDMMC_WP	3.3V
P16	RGMII_TXD2	3.3V	S16	FLASH0_ALE	1.8V
P17	RGMII_TXD3	3.3V	S17	FLASH0_CLE	1.8V
P18	RGMII_TXCLK	3.3V	S18	FLASH0_RDY	1.8V
P19	RGMII_RXCLK	3.3V	S19	FLASH0_CS0	1.8V
P20	RGMII_MDC	3.3V	S20	MIPI_RST	1.8V
P21	RGMII_MDIO	3.3V	S21	UART1_CTS	3.3V
P22	RGMII_RST	3.3V	S22	UART1_RX	3.3V
P23	RGMII_CRS	3.3V	S23	UART1_TX	3.3V
P24	GND	0V	S24	UART1_RTS	3.3V
P25	SDIO0_D3	2.2V	S25	GPIO5_C2	3.3V
P26	SDIO0_CMD	2.2V	S26	SPI0_TXD	3.3V
P27	SDIO0_D0	2.2V	S27	SPI0_RXD	3.3V
P28	SDIO0_D2	2.2V	S28	SPI0_CSn1	3.3V
P29	SDIO0_D1	2.2V	S29	WIFI_REG_ON	2.2V
P30	SDIO0_CLK	2.2V	S30	BT_HOST_WAKE	2.2V
P31	GND	0V	S31	GPIO4_D3	2.2V
P32	GND	0V	S32	WIFI_HOST_WAKE	2.2V
P33	GND	0V	S33	BT_RST	2.2V
P34	GND	0V	S34	BT_WAKE	2.2V
P35	GND	0V	S35	GND	0V
P36	GND	0V	S36	GND	0V

P37	UART0_CTS	2.2V	S37	I2S0_CLK	3.3V
P38	UART0_RTS	2.2V	S38	GND	0V
P39	UART0_TXD	2.2V	S39	I2S0_SCLK	3.3V
P40	UART0_RXD	2.2V	S40	I2S0_SDI	3.3V
P41	I2C2_SCL	3.3V	S41	I2S0_LRCK_TX	3.3V
P42	I2C2_SDA	3.3V	S42	I2S0_LRCK_RX	3.3V
P43	SPDIF_TX	3.3V	S43	I2S0_SDO0	3.3V
P44	GND	0V	S44	I2S0_SDO3	3.3V
P45	EDP_TX0P	1.8V	S45	I2S0_SDO2	3.3V
P46	EDP_TX0N	1.8V	S46	I2S0_SDO1	3.3V
P47	GND	0V	S47	HDMI_HPD	1.8V
P48	EDP_TX1P	1.8V	S48	GND	0V
P49	EDP_TX1N	1.8V	S49	HDMI_TXCP	1.8V
P50	GND	0V	S50	HDMI_TXCN	1.8V
P51	EDP_TX2P	1.8V	S51	GND	0V
P52	EDP_TX2N	1.8V	S52	HDMI_TX0P	1.8V
P53	GND	0V	S53	HDMI_TX0N	1.8V
P54	EDP_TX3P	1.8V	S54	GND	0V
P55	EDP_TX3N	1.8V	S55	HDMI_TX1N	1.8V
P56	GND	0V	S56	HDMI_TX1P	1.8V
P57	EDPAUXP	1.8V	S57	GND	0V
P58	EDPAUXN	1.8V	S58	HDMI_TX2N	1.8V
P59	GND	0V	S59	HDMI_TX2P	1.8V
P60	MIPI_RX_D0N	1.8V	S60	GND	0V
P61	MIPI_RX_D0P	1.8V	S61	MIPI_TX/RX_D0P	1.8V
P62	GND	0V	S62	MIPI_TX/RX_D0N	1.8V
P63	MIPI_RX_D1N	1.8V	S63	GND	0V
P64	MIPI_RX_D1P	1.8V	S64	MIPI_TX/RX_D1P	1.8V
P65	GND	0V	S65	MIPI_TX/RX_D1N	1.8V
P66	MIPI_RX_CLKN	1.8V	S66	GND	0V
P67	MIPI_RX_CLKP	1.8V	S67	MIPI_TX/RX_CLKP	1.8V
P68	GND	0V	S68	MIPI_TX/RX_CLKN	1.8V
P69	MIPI_RX_D2N	1.8V	S69	GND	1.8V
P70	MIPI_RX_D2P	1.8V	S70	MIPI_TX/RX_D2P	1.8V
P71	GND	0V	S71	MIPI_TX/RX_D2N	1.8V
P72	MIPI_RX_D3N	1.8V	S72	GND	0V
P73	MIPI_RX_D3P	1.8V	S73	MIPI_TX/RX_D3P	1.8V

P74	GND	0V	S74	MIPI_TX/RX_D3N	1.8V
P75	GND	0V	S75	GND	0V
P76	LVDS_D4P	3.3V	S76	GND	0V
P77	LVDS_D4N	3.3V	S77	GND	0V
P78	LVDS_D3P	3.3V	S78	MIPI_TX_D1P	1.8V
P79	LVDS_D3N	3.3V	S79	MIPI_TX_D1N	1.8V
P80	LVDS_D2P	3.3V	S80	GND	0V
P81	LVDS_D2N	3.3V	S81	MIPI_TX_D0P	1.8V
P82	LVDS_CLK0P	3.3V	S82	MIPI_TX_D0N	1.8V
P83	LVDS_CLK0N	3.3V	S83	GND	0V
P84	LVDS_D1P	3.3V	S84	MIPI_TX_CLKP	1.8V
P85	LVDS_D1N	3.3V	S85	MIPI_TX_CLKN	1.8V
P86	LVDS_D0P	3.3V	S86	GND	0V
P87	LVDS_D0N	3.3V	S87	MIPI_TX_D2P	1.8V
P88	LVDS_D8P	3.3V	S88	MIPI_TX_D2N	1.8V
P89	LVDS_D8N	3.3V	S89	GND	0V
P90	LVDS_D9N	3.3V	S90	MIPI_TX_D3P	1.8V
P91	LVDS_D9P	3.3V	S91	MIPI_TX_D3N	1.8V
P92	LVDS_D7N	3.3V	S92	GND	0V
P93	LVDS_D7P	3.3V	S93	CIF_D5	1.8V
P94	LVDS_CLK1N	3.3V	S94	CIF_D1	1.8V
P95	LVDS_CLK1P	3.3V	S95	CIF_D2	1.8V
P96	LVDS_D6P	3.3V	S96	CIF_D3	1.8V
P97	LVDS_D6N	3.3V	S97	CIF_D0	1.8V
P98	LVDS_D5P	3.3V	S98	CIF_CLK	1.8V
P99	LVDS_D5N	3.3V	S99	CIF_D7	1.8V
P100	LCDC0_VSYNC	3.3V	S100	CIF_D4	1.8V
P101	GND	0V	S101	CIF_D6	1.8V
P102	LCDC0_DCLK	3.3V	S102	CIF_PDN1	1.8V
P103	GND	0V	S103	CIF_CLKO	1.8V
P104	LCDC0_HSYNC	3.3V	S104	CIF_VSYNC	1.8V
P105	LCDC0_DEN	3.3V	S105	CIF_PDN0	1.8V
P106	I2C3_SCL	1.8V	S106	CIF_HREF	1.8V
P107	I2C3_SDA	1.8V	S107	GND	0V
P108	GPIO2_B6	1.8V	S108	UART3_TX	3.3V
P109	GPIO2_B5	1.8V	S109	5V_DRV	3.3V
P110	GND	0V	S110	GYR_INT	3.3V

P111	ADC_IN0	1.8V	S111	EDP_BL	3.3V
P112	ADC_IN2	1.8V	S112	UART3_CTS	3.3V
P113	RECOVER	1.8V	S113	FLASH_TRIGOUT	3.3V
P114	GND	0V	S114	LCDC_BL	3.3V
P115	EFUSE_PWR	3.3V	S115	TOUCH_RST	3.3V
P116	PMUGPIO0_B5	3.3V	S116	LCD_EN	3.3V
P117	OTG_VBUS_DRV	3.3V	S117	LCD_RST	3.3V
P118	PHONE_CTL	3.3V	S118	TOUCH_INT	3.3V
P119	UART2_RXD	3.3V	S119	I2C1_SCL	3.3V
P120	UART2_TXD	3.3V	S120	I2C1_SDA	3.3V
P121	HDMI_CEC	3.3V	S121	GSEN_INT	3.3V
P122	SPK_CTL	3.3V	S122	SPI2_MISO	3.3V
P123	FLASH_EN	3.3V	S123	SPI2_CLK	3.3V
P124	UART3_RTS	3.3V	S124	SPI2_nCS0	3.3V
P125	EDP_HPD	3.3V	S125	SPI2_MOSI	3.3V
P126	UART3_RX	3.3V	S126	JTAG_TCK	3.3V
P127	BL_EN	3.3V	S127	JTAG_TDO	3.3V
P128	LED4	3.3V	S128	JTAG_TDI	3.3V
P129	LED3	3.3V	S129	JTAG_TMS	3.3V
P130	LED2	3.3V	S130	nJTAG_TRST	3.3V
P131	LED1	3.3V	S131	USB2UART_nRST	3.3V
P132	KEY_VOL_N	3.3V	S132	OTG_ID	3.3V
P133	KEY_VOL_P	3.3V	S133	OTG_DET	3.3V
P134	I2C5_SDA	3.3V	S134	GND	0V
P135	I2C5_SCL	3.3V	S135	HOST1_DP	5V
P136	I2C4_SDA	3.3V	S136	HOST1_DM	5V
P137	I2C4_SCL	3.3V	S137	GND	0V
P138	PWR_KEY	5V	S138	HOST2_DP	5V
P139	RESET_KEY	5V	S139	HOST2_DM	5V
P140	PMIC_PWRON	5V	S140	GND	0V
P141	OTP_RESET	3.3V	S141	OTG_DP	5V
P142	HSIC_STROBE	1.0V	S142	OTG_DM	5V
P143	HSIC_DATA	1.0V	S143		
P144	RTC_CLKOUT2	32.768KHz	S144	VCC_EFUSE	3.0V
P145	GND	0V	S145	VCCA_33	3.3V
P146	GND	0V	S146	VCC18_DVP	1.8V
P147	GND	0V	S147	VCC28_DVP	2.8V

P148	GND	0V	S148	RTC_PWRIN	3.4V
P149	GND	0V	S149	VCC_18	1.8V
P150	GND	0V	S150	VCC_IO	3.3V
P151	GND	0V	S151	VCC_IO	3.3V
P152	GND	0V	S152	5VIN	5V
P153	GND	0V	S153	5VIN	5V
P154	GND	0V	S154	5VIN	5V
P155	GND	0V	S155	5VIN	5V
P156	GND	0V	S156	5VIN	5V
			S157	5VIN	5V
			S158	5VIN	5V

Instruction of detailed function of pins

form 1

Pin	CPU Ball Name	Pin Name	function selection	module affiliated	function description	voltage
P1	NC	GND	---	power supply	digitally	0V
P2						
P3						
P11						
P13						
P24						
P31						
P32						
P33						
P34						
P35						
P36						
P44						
P47						
P50						
P53						
P56						
P59						
P62						
P65						
P68						
P71						
P74						
P75						
P101						
P103						
P110						
P114						
P145						
P146						
P147						
P148						
P149						
P150						
P151						

P152						
P153						
P154						
P155						
P156						
P4	AB1	RGMII_RXD2	0	gpio3	gpio3d2	3.3V
			1	flash1	flash1_data2	
			2	host	host_dout2	
			3	mac	mac_rxd2	
			4	sdio1	sdio1_data2	
P5	AB2	RGMII_TXD1	0	gpio3	gpio3d5	3.3V
			1	flash1	flash1_data5	
			2	host	host_dout5	
			3	mac	mac_txd1	
			4	sdio1	sdio1_wrprt	
P6	AC1	RGMII_RXD3	0	gpio3	gpio3d3	3.3V
			1	flash1	flash1_data3	
			2	host	host_dout3	
			3	mac	mac_rxd3	
			4	sdio1	sdio1_data3	
P7	AC2	RGMII_RXDV	0	gpio4	gpio4a1	3.3V
			1	flash1	flash1_wp	
			2	host	host_ckoutn	
			3	mac	mac_rxdv	
			4	flash0	flash0_csn4	
P8	AD1	RGMII_TXD0	0	gpio3	gpio3d4	3.3V
			1	flash1	flash1_cle	
			2	host	host_dout10	
			3	mac	mac_txen	
			4	flash0	flash0_csn7	
P10	AE1	RGMII_RXER	0	gpio4	gpio4a2	3.3V
			1	flash1	flash1_rdn	
			2	host	host_dout8	
			3	mac	mac_rxer	
			4	flash0	flash0_csn5	
P12	AE2	RGMII_CLK	0	gpio4	gpio4a3	3.3V
			1	flash1	flash1_ale	

			2	host	host_dout9	
			3	mac	mac_clk	
			4	flash0	flash0_csn6	
P14	AA3	RGMII_RXD0	0	gpio3	gpio3d6	3.3V
			1	flash1	flash1_data6	
			2	host	host_dout6	
			3	mac	mac_rxd0	
			4	sdio1	sdio1_bkpwr	
P15	AA4	RGMII_RXD1	0	gpio3	gpio3d7	3.3V
			1	flash1	flash1_data7	
			2	host	host_dout7	
			3	mac	mac_rxd1	
			4	sdio1	sdio1_intn	
P16	Y4	RGMII_TXD2	0	gpio3	gpio3d0	3.3V
			1	flash1	flash1_data0	
			2	host	host_dout0	
			3	mac	mac_txd2	
			4	sdio1	sdio1_data0	
P17	V6	RGMII_TXD3	0	gpio3	gpio3d1	3.3V
			1	flash1	flash1_data1	
			2	host	host_dout1	
			3	mac	mac_txd3	
			4	sdio1	sdio1_data1	
P18	V7	RGMII_TXCLK	0	gpio4	gpio4b1	3.3V
			1	flash1	flash1_csn2	
			2	host	host_dout15	
			3	mac	mac_txclk	
			4	sdio1	sdio1_pwre	
P19	AB5	RGMII_RXCLK	0	gpio4	gpio4a6	3.3V
			1	flash1	flash1_csn0	
			2	host	host_dout12	
			3	mac	mac_rxclk	
			4	sdio1	sdio1_cmd	
P20	AC3	RGMII_MDC	0	gpio4	gpio4a0	3.3V
			1	flash1	flash1_rdy	
			2	host	host_ckoutp	
			3	mac	mac_mdc	

P21	Y5	RGMII_MDIO	0	gpio4	gpio4a5	3.3V
			1	flash1	flash1_wrn	
			2	host	host_dout11	
			3	mac	mac_mdio	
P22	AA5	RGMII_RST	0	gpio4	gpio4b0	3.3V
			1	flash1	flash1_dqs	
			2	host	host_dout14	
			3	mac	mac_col	
			4	flash1	flash1_csn3	
P23	AA6	RGMII_CRS	0	gpio4	gpio4a7	3.3V
			1	flash1	flash1_csn1	
			2	host	host_dout13	
			3	mac	mac_crs	
			4	sdio1	sdio1_clkout	
P25	AH7	SDIO0_D3	0	gpio4	gpio4c7	2.2V
			1	sdio0	sdio0_data3	
P26	AH8	SDIO0_CMD	0	gpio4	gpio4d0	2.2V
			1	sdio0	sdio0_cmd	
P27	AH9	SDIO0_D0	0	gpio4	gpio4c4	2.2V
			1	sdio0	sdio0_data0	
P28	AG9	SDIO0_D2	0	gpio4	gpio4c6	2.2V
			1	sdio0	sdio0_data2	
P29	AH10	SDIO0_D1	0	gpio4	gpio4c5	2.2V
			1	sdio0	sdio0_data1	
P30	AG8	SDIO0_CLK	0	gpio4	gpio4d1	2.2V
			1	sdio0	sdio0_clkout	
P37	AB12	UART0_CTS	0	gpio4	gpio4c2	2.2V
			1	uart0bt	uart0bt_ctsn	
P38	AB11	UART0_RTS	0	gpio4	gpio4c3	2.2V
			1	sdio0	sdio0_data2	
P39	AG10	UART0_TXD	0	gpio4	gpio4c1	2.2V
			1	uart0bt	uart0bt_sout	
P40	AH11	UART0_RXD	0	gpio4	gpio4c0	2.2V
			1	uart0bt	uart0bt_sin	
P41	AD12	I2C2_SCL	0	gpio6	gpio6b2	3.3V
			1	i2c2audio	i2c2audio_scl	
P42	AF12	I2C2_SDA	0	gpio6	gpio6b1	3.3V

			1	i2c2audio	i2c2audio_sda	
P43	AE12	SPDIF_TX	0	gpio6	gpio6b3	3.3V
			1	spdif	spdif_tx	
P45	AG14	EDP_TX0P		edp	edp_tx0p	1.8V
P46	AH14	EDP_TX0N		edp	edp_tx0n	1.8V
P48	AG15	EDP_TX1P		edp	edp_tx1p	1.8V
P49	AH15	EDP_TX1N		edp	edp_tx1n	1.8V
P51	AG16	EDP_TX2P		edp	edp_tx2p	1.8V
P52	AH16	EDP_TX2N		edp	edp_tx2n	1.8V
P54	AG17	EDP_TX3P		edp	edp_tx3p	1.8V
P55	AH17	EDP_TX3N		edp	edp_tx3n	1.8V
P57	AG18	EDPAUXP		edp	edp_auxp	1.8V
P58	AH18	EDPAUXN		edp	edp_auxn	1.8V
P60	AH23	MIPI_RX_D0N		mipi	mipi_rx_d0n	1.8V
P61	AG23	MIPI_RX_D0P		mipi	mipi_rx_d0p	1.8V
P63	AH24	MIPI_RX_D1N		mipi	mipi_rx_d1n	1.8V
P64	AG24	MIPI_RX_D1P		mipi	mipi_rx_d1p	1.8V
P66	AH25	MIPI_RX_CLKN		mipi	mipi_rx_clkn	1.8V
P67	AG25	MIPI_RX_CLKP		mipi	mipi_rx_clkp	1.8V
P69	AH26	MIPI_RX_D2N		mipi	mipi_rx_d2n	1.8V
P70	AG26	MIPI_RX_D2P		mipi	mipi_rx_d2p	1.8V
P72	AH27	MIPI_RX_D3N		mipi	mipi_rx_d3n	1.8V
P73	AH28	MIPI_RX_D3P		mipi	mipi_rx_d3p	1.8V
P76	AA27	LVDS_D4P	0	lvds	lvds_clkp0	3.3V
			1	lcdc0	lcdc0_data10	
			2	trace	trace_data10	
P77	AA28	LVDS_D4N	0	lvds	lvds_clkn0	3.3V
			1	lcdc0	lcdc0_data11	
			2	trace	trace_data11	
P78	Y27	LVDS_D3P	0	lvds	lvds_padp4	3.3V
			1	lcdc0	lcdc0_data8	
			2	trace	trace_data8	
P79	Y28	LVDS_D3N	0	lvds	lvds_padn4	3.3V
			1	lcdc0	lcdc0_data9	
			2	trace	trace_data9	
P80	W27	LVDS_D2P	0	lvds	lvds_padp3	3.3V
			1	lcdc0	lcdc0_data6	

			2	trace	trace_data6	
P81	W28	LVDS_D2N	0	lvds	lvds_padn3	3.3V
			1	lcdc0	lcdc0_data7	
			2	trace	trace_data7	
P82	V27	LVDS_CLK0P	0	lvds	lvds_padp2	3.3V
			1	lcdc0	lcdc0_data4	
			2	trace	trace_data4	
P83	V28	LVDS_CLK0N	0	lvds	lvds_padn2	3.3V
			1	lcdc0	lcdc0_data5	
			2	trace	trace_data5	
P84	U27	LVDS_D1P	0	lvds	lvds_padp1	3.3V
			1	lcdc0	lcdc0_data2	
			2	trace	trace_data2	
P85	U28	LVDS_D1N	0	lvds	lvds_padn1	3.3V
			1	lcdc0	lcdc0_data3	
			2	trace	trace_data3	
P86	T27	LVDS_D0P	0	lvds	lvds_padp0	3.3V
			1	lcdc0	lcdc0_data0	
			2	trace	trace_data0	
P87	T28	LVDS_D0N	0	lvds	lvds_padn0	3.3V
			1	lcdc0	lcdc0_data1	
			2	trace	trace_data1	
P88	AB27	LVDS_D8P	0	lvds	lvds_padp9	3.3V
			1	lcdc0	lcdc0_data20	
P89	AB28	LVDS_D8N	0	lvds	lvds_padn9	3.3V
			1	lcdc0	lcdc0_data21	
P90	AC26	LVDS_D9N	0	lvds	lvds_clkn1	3.3V
			1	lcdc0	lcdc0_data23	
P91	AC25	LVDS_D9P	0	lvds	lvds_clkp1	3.3V
			1	lcdc0	lcdc0_data22	
P92	AA26	LVDS_D7N	0	lvds	lvds_padn8	3.3V
			1	lcdc0	lcdc0_data19	
P93	AA25	LVDS_D7P	0	lvds	lvds_padp8	3.3V
			1	lcdc0	lcdc0_data18	
P94	Y26	LVDS_CLK1N	0	lvds	lvds_padn7	3.3V
			1	lcdc0	lcdc0_data17	
			2	trace	trace_ctl	

P95	Y25	LVDS_CLK1P	0	lvds	lvds_padp7	3.3V
			1	lcdc0	lcdc0_data16	
			2	trace	trace_clk	
P96	V25	LVDS_D6P	0	lvds	lvds_padp6	3.3V
			1	lcdc0	lcdc0_data14	
			2	trace	trace_data14	
P97	V26	LVDS_D6N	0	lvds	lvds_padn6	3.3V
			1	lcdc0	lcdc0_data15	
			2	trace	trace_data15	
P98	U25	LVDS_D5P	0	lvds	lvds_padp5	3.3V
			1	lcdc0	lcdc0_data12	
			2	trace	trace_data12	
P99	U26	LVDS_D5N	0	lvds	lvds_padn5	3.3V
			1	lcdc0	lcdc0_data13	
			2	trace	trace_data13	
P100	AB24	LCDC0_VSYNC	0	gpio1	gpio1d1	3.3V
			1	lcdc0	lcdc0_vsync	
P102	AA24	LCDC0_DCLK	0	gpio1	gpio1d3	3.3V
			1	lcdc0	lcdc0_dclk	
P104	AA23	LCDC0_HSYNC	0	gpio1	gpio1d0	3.3V
			1	lcdc0	lcdc0_hsync	
P105	AA22	LCDC0_DEN	0	gpio1	gpio1d2	3.3V
			1	lcdc0	lcdc0_den	
P106	P22	I2C3_SCL	0	gpio2	gpio2c0	1.8V
			1	i2c3cam	i2c3cam_scl	
P107	R23	I2C3_SDA	0	gpio2	gpio2c1	1.8V
			1	i2c3cam	i2c3cam_sda	
P108	R26	GPIO2_B6	0	gpio2	gpio2b5	1.8V
			1	cif	cif_data1	
P109	R27	GPIO2_B5	0	gpio2	gpio2b4	1.8V
			1	cif	cif_data0	
P111	P24	ADC_IN0		saradc	saradc_ain0	1.8V
P112	P23	ADC_IN2		saradc	saradc_ain2	1.8V
P113	P21	RECOVER		saradc	saradc_ain1	1.8V
P115	K27	EFUSE_PWR	0	gpio0	gpio0a3	3.3V
			1	ddrio1	ddrio1_reten	
P116	L28	PMUGPIO0_B5	0	gpio0	gpio0b5	3.3V

			1	clk	clk_27m	
P117	M28	OTG_VBUS_DRV		gpio0	gpio0b4	3.3V
P118	L27	PHONE_CTL		gpio0	gpio0b3	3.3V
P119	J25	UART2_RXD	0	gpio7	gpio7c6	2.5V
			1	uart2dbg	uart2dbg_sin	
			2	uart2dbg	uart2dbg_sirin	
			3	pwm	pwm_2	
P120	H28	UART2_TXD	0	gpio7	gpio7c7	3.3V
			1	uart2dbg	uart2dbg_sout	
			2	uart2dbg	uart2dbg_sirout	
			3	pwm	pwm_3 en	
			4	edphdmi	edphdmi_cecinout	
P121	G28	HDMI_CEC	0	gpio7	gpio7c0	3.3V
			1	isp	isp_flashtrigin	
			2	edphdmi	edphdmi_cecinout	
P122	G27	SPK_CTL	0	gpio7	gpio7b7	3.3V
			1	isp	isp_shuttertrig	
			2	spi1	spi1_txd	
P123	F28	FLASH_EN	0	gpio7	gpio7b6	3.3V
			1	isp	isp_prelighttrig	
			2	spi1	spi1_rxd	
P124	F27	UART3_RTS	0	gpio7	gpio7b2	3.3V
			1	uart3gps	uart3gps_rt sn	
			2	usb	usb_drvvbus0	
P125	E28	EDP_HPD	0	gpio7	gpio7b3	3.3V
			1	usb	usb_drvvbus1	
			2	edp	edp_hotplug	
P126	E27	UART3_RX	0	gpio7	gpio7a7	3.3V
			1	uart3gps	uart3gps_sin	
			2	gps	gps_mag	
			3	hsadc	hsadc_data0	
P127	D28	BL_EN		gpio7	gpio7a2	3.3V
P128	L25	LED4		gpio0	gpio0b1	3.3V
P129	M24	LED3		gpio0	gpio0c2	3.3V
P130	L24	LED2		gpio0	gpio0b0	3.3V
P131	L23	LED1		gpio0	gpio0a7	3.3V
P132	M22	KEY_VOL_N		gpio0	gpio0b6	3.3V

P133	L22	KEY_VOL_P		gpio0	gpio0a6	3.3V
P134	H26	I2C5_SDA	0	gpio7	gpio7c3	3.3V
			1	i2c5hdm	i2c5hdmi_sda	
			2	edphdmii2c	edphdmii2c_sda	
P135	J24	I2C5_SCL	0	gpio7	gpio7c4	3.3V
			1	i2c5hdmi	i2c5hdmi_scl	
			2	edphdmii2c	edphdmii2c_sc	
P136	H25	I2C4_SDA	0	gpio7	gpio7c1	3.3V
			1	i2c4tp	i2c4tp_sda	
P137	J23	I2C4_SCL	0	gpio7	gpio7c2	3.3V
			1	i2c4tp	i2c4tp_scl	
P138	L21	PWR_KEY		gpio0	gpio0a5	5V
P139	NC	RESET_KEY		RESET	RESET_KEY	5V
P140	---	PMIC_PWRON		PMIC	PWRON	5V
P141	L26	OTP_RESET	0	gpio0	gpio0b2	3.3V
			1	tsadc	tsadc_int	
P142	B27	HSIC_STROBE	0	lvds	lvds_padp9	1.0V
			1	lcdc0	lcdc0_data20	
P143	A27	HSIC_DATA	0	lvds	lvds_clkp0	1.0V
			1	lcdc0	lcdc0_data10	
			2	trace	trace_data10	
P144	--	RTC_CLKOUT2		--	--	32.768KHz

form 2

Pin	CPU Ball Name	Pin Name	Function selection	Module affiliated	Function description	Voltage
S1	NC	GND		Power supply	Digitally	0V
S35						
S36						
S38						
S48						
S51						
S54						
S57						
S60						
S63						
S66						
S69						
S72						
S75						
S77						
S80						
S83						
S86						
S89						
S92						
S107						
S134						
S137						
S140						
S152						
S153						
S154						
S155						
S156						
S157						
S158						
S2	Y7	RGMII_INT	0	gpio3	gpio3c1	1.8V
			1	flash0	flash0_csn3	
			2	emmc	emmc_rstnout	
S3	Y6	NFC_WAKE	0	gpio3	gpio3b2	1.8V

			1	flash0	flash0_rdn	
S4	AB8	NFC_REG_ON	0	gpio5	gpio5c3	3.3V
			1	ts0	ts0_err	
S5	AC7	SPI0_CSn0	0	gpio5	gpio5b5	3.3V
			1	spi0	spi0_csn0	
			2	ts0	ts0_data5	
			3	uart4exp	uart4exp_rtsn	
S6	AD7	SPI0_CLK	0	gpio5	gpio5b4	3.3V
			1	gpio5	gpio5b4	
			2	ts0	ts0_data4	
			3	uart4exp	uart4exp_ctsn	
S7	AA9	NFC_HOST_WAKE	0	gpio5	gpio5c1	3.3V
			1	ts0	ts0_valid	
S8	AB9	SDMMC_D3	0	gpio6	gpio6c3	3.3V
			1	sdmmc0	sdmmc0_data3	
			2	jtag	jtag_tck	
S9	AC8	SDMMC_CMD	0	gpio6	gpio6c5	3.3V
			1	sdmmc0	sdmmc0_cmd	
S10	AD8	SDMMC_D2	0	gpio6	gpio6c2	3.3V
			1	sdmmc0	sdmmc0_data2	
			2	jtag	jtag_tdi	
S11	AH5	SDMMC_DET	0	gpio6	gpio6c6	3.3V
			1	sdmmc0	sdmmc0_dectn	
S12	AH6	SDMMC_D1	0	gpio6	gpio6c1	3.3V
			1	sdmmc0	sdmmc0_data1	
			2	jtag	jtag_trstn	
S13	AG6	SDMMC_CLK	0	gpio6	gpio6c4	3.3V
			1	sdmmc0	sdmmc0_clkout	
			2	jtag	jtag_tdo	
S14	AG7	SDMMC_D0	0	gpio6	gpio6c0	3.3V
			1	sdmmc0	sdmmc0_data0	
			2	jtag	jtag_tms	
S15	AG4	SDMMC_WP	0	gpio3	gpio3b5	3.3V
			1	flash0	flash0_wrn	
S16	AF4	FLASH0_ALE	0	gpio3	gpio3b3	1.8V
			1	flash0	flash0_ale	
S17	AH3	FLASH0_CLE	0	gpio3	gpio3b4	1.8V

			1	flash0	flash0_cle	
S18	AH2	FLASH0_RDY	0	gpio3	gpio3b0	1.8V
			1	flash0	flash0_rdy	
S19	AC5	FLASH0_CS0	0	gpio3	gpio3b6	1.8V
			1	flash0	flash0_csn0	
S20	AD4	MIPI_RST	0	gpio3	gpio3b7	1.8V
			1	flash0	flash0_csn1	
S21	AH4	UART1_CTS	0	gpio5	gpio5b2	3.3V
			1	uart1bb	uart1bb_ctsn	
			2	ts0	ts0_data2	
S22	AF5	UART1_RX	0	gpio5	gpio5b0	3.3V
			1	uart1bb	uart1bb_sin	
			2	ts0	ts0_data0	
S23	AA7	UART1_TX	0	gpio5	gpio5b1	3.3V
			1	uart1bb	uart1bb_sout	
			2	ts0	ts0_data1	
S24	AD6	UART1_RTS	0	gpio5	gpio5b3	3.3V
			1	uart1bb	uart1bb_rtsn	
			2	ts0	ts0_data3	
S25	AE6	GPIO5_C2	0	gpio5	gpio5c2	3.3V
			1	ts0	ts0_clk	
S26	AE5	SPI0_TXD	0	gpio5	gpio5b6	3.3V
			1	spi0	spi0_txd	
			2	ts0	ts0_data6	
			3	uart	uart4exp_sout	
S27	AF6	SPI0_RXD	0	gpio5	gpio5b7	3.3V
			1	spi0	spi0_rxd	
			2	ts0	ts0_data7	
			3	uart	uart4exp_sin	
S28	AG5	SPI0_CSn1	0	gpio5	gpio5c0	3.3V
			1	spi0	spi0_csn1	
			2	ts0	ts0_sync	
S29	AC11	WIFI_REG_ON	0	gpio4	gpio4d4	2.2V
			1	sdio0	sdio0_pwren	
S30	AD9	BT_HOST_WAKE		gpio4	gpio4d7B	2.2V
S31	AE9	GPIO4_D3	0	gpio4	gpio4d3	2.2V
			1	sdio0	sdio0_wrprt	

S32	AE8	WIFI_HOST_WAKE	0	gpio4	gpio4d6	2.2V
			1	sdio0	sdio0_intn	
S33	AF8	BT_RST	0	gpio4	gpio4d5	2.2V
			1	sdio0	sdio0_bkpwr	
S34	AF9	BT_WAKE	0	gpio4	gpio4d2	2.2V
			1	sdio0	sdio0_detectn	
S37	AC12	I2S0_CLK	0	gpio6	gpio6b0	3.3V
			1	i2s	i2s_clk	
S39	AD11	I2S0_SCLK	0	gpio6	gpio6a0	3.3V
			1	i2s	i2s_sclk	
S40	AE11	I2S0_SDI	0	gpio6	gpio6a3	3.3V
			1	i2s	i2s_sdi	
S41	AF11	I2S0_LRCK_TX	0	gpio6	gpio6a2	3.3V
			1	i2s	i2s_lrcktx	
S42	AG11	I2S0_LRCK_RX	0	gpio6	gpio6a1	3.3V
			1	i2s	i2s_lrckrx	
S43	AG12	I2S0_SDO0	0	gpio6	gpio6a4	3.3V
			1	i2s	i2s_sdo0	
S44	AH12	I2S0_SDO3	0	gpio6	gpio6a7	3.3V
			1	i2s	i2s_sdo3	
S45	AG13	I2S0_SDO2	0	gpio6	gpio6a6	3.3V
			1	i2s	i2s_sdo2	
S46	AH13	I2S0_SDO1	0	gpio6	gpio6a5	3.3V
			1	i2s	i2s_sdo1	
S47	AB18	HDMI_HPD		hdmi	hdmi_hpd	1.8V
S49	AG19	HDMI_TXCP		hdmi	hdmi_tcp	1.8V
S50	AH19	HDMI_TXCN		hdmi	hdmi_tcn	1.8V
S52	AG20	HDMI_TX0P		hdmi	hdmi_tx0p	1.8V
S53	AH20	HDMI_TX0N		hdmi	hdmi_tx0n	1.8V
S55	AH21	HDMI_TX1N		hdmi	hdmi_tx1n	1.8V
S56	AG21	HDMI_TX1P		hdmi	hdmi_tx1p	1.8V
S58	AH22	HDMI_TX2N		hdmi	hdmi	1.8V
S59	AG22	HDMI_TX2P		hdmi	hdmi_tx2p	1.8V
S61	AE20	MIPI_TX/RX_D0P		mip_itrx	mip_itrx_d0p	1.8V
S62	AF20	MIPI_TX/RX_D0N		mip_itrx	mip_itrx_d0n	1.8V
S64	AE21	MIPI_TX/RX_D1P		mip_itrx	mmip_itrx_d1p	1.8V
S65	AF21	MIPI_TX/RX_D1N		mip_itrx	mip_itrx_d1n	1.8V

S67	AE23	MIPI_TX/RX_CLKP		mip_itrxrx	mip_itrxrx_clkp	1.8V
S68	AF23	MIPI_TX/RX_CLKN		mip_itrxrx	mip_itrxrx_clkn	1.8V
S70	AE24	MIPI_TX/RX_D2P		mip_itrxrx	mip_itrxrx_d2p	1.8V
S71	AF24	MIPI_TX/RX_D2N		mip_itrxrx	mipi_rx_d2n	1.8V
S73	AF25	MIPI_TX/RX_D3P		mip_itrxrx	mipi_rx_d3p	1.8V
S74	AD25	MIPI_TX/RX_D3N		mip_itrxrx	mipi_rx_d3n	1.8V
S78	AF27	MIPI_TX_D1P		mip_itrxrx	mipi_rx_d1p	1.8V
S79	AF28	MIPI_TX_D1N		mip_itrxrx	mipi_rx_d1n	1.8V
S81	AG27	MIPI_TX_D0P		mip_itrxrx	mipi_rx_d0n	1.8V
S82	AG28	MIPI_TX_D0N		mip_itrxrx	mipi_rx_d0n	1.8V
S84	AE27	MIPI_TX_CLKP		mip_itrxrx	mipi_rx_clkp	1.8V
S85	AE28	MIPI_TX_CLKN		mip_itrxrx	mipi_rx_clkn	1.8V
S87	AD27	MIPI_TX_D2P		mip_itrxrx	mipi_tx_d2p	1.8V
S88	AD28	MIPI_TX_D2N		mip_itrxrx	mipi_rx_d2n	1.8V
S90	AC27	MIPI_TX_D3P		mip_itrxrx	mipi_rx_d3p	1.8V
S91	AC28	MIPI_TX_D3N		mip_itrxrx	mipi_rx_d3n	1.8V
S93	U21	CIF_D5	0	gpio2	gpio2a5	1.8V
			1	cif	cif_data7	
			2	host	host_ckinn	
			3	hsadc	hsadc_data5	
S94	R26	CIF_D1	0	gpio2	gpio2b5	3.3V
			1	cif	cif_data1	
S95	Y22	CIF_D2	0	gpio2	gpio2a2	1.8V
			1	cif	cif_data4	
			2	host	host_din2	
			3	hsadc	hsadc_data2	
S96	V21	CIF_D3	0	gpio2	gpio2a3	1.8V
			1	cif	cif_data5	
			2	host	host_din3	
			3	hsadc	hsadc_data3	
S97	Y23	CIF_D0	0	gpio2	gpio2a0	1.8V
			1	cif	cif_data2	
			2	host	host_din0	
			3	hsadc	hsadc_data0	
S98	V22	CIF_CLKI	0	gpio2	gpio2b2	1.8V
			1	cif	cif_clkln	
			2	host	host_wkack	

		3	gps	gps_clk		
		4	hsadc	hsadc_clkout		
S99	V23	CIF_D7	0	gpio2	gpio2a7	1.8V
			1	cif	cif_data9	
			2	host	host_din5	
			3	hsadc	hsadc_data7	
S100	U22	CIF_D4	0	gpio2	gpio2a4	1.8V
			1	cif	cif_data6	
			2	host	host_ckinp	
			3	hsadc	hsadc_data4	
S101	U23	CIF_D6	0	gpio2	gpio2a6	1.8V
			1	cif	cif_data8	
			2	host	host_din4	
			3	hsadc	hsadc_data6	
S102	R21	CIF_PDN1	0	gpio2	gpio2b7	1.8V
			1	cif	cif_data11	
S103	R22	CIF_CLKO	0	gpio2	gpio2b3	1.8V
			1	cif	cif_clkout	
			2	host	host_wkreq	
			3	hsadcts	hsadcts_fail	
S104	R25	CIF_VSYNC	0	gpio2	gpio2b0	1.8V
			1	cif	cif_vsync	
			2	host	host_din6	
			3	hsadcts	hsadcts_sync	
S105	R24	CIF_PDN0	0	gpio2	gpio2b6	1.8V
			1	cif	cif_data10	
S106	R28	CIF_HREF	0	gpio2	gpio2b1	1.8V
			1	cif	cif_href	
			2	host	host_din7	
			3	hsadcts	hsadcts_valid	
S108	J21	UART3_TX	0	gpio7	gpio7b0	3.3V
			1	uart3gps	uart3gps_sout	
			2	gps	gps_sig	
			3	hsadc	hsadc_data1	
S109	J22	5V_DRV	0	gpio7	gpio7b4	3.3V
			1	isp	isp_shutteren	
			2	spi1	spi1_clk	

S110	G21	GYR_INT	0	gpio8	gpio8a2	3.3V
			1	sc	sc_detect	
S111	G23	EDP_BL	0	gpio7	gpio7a1	3.3V
			1	pwm	pwm_1	
S112	H23	UART3_CTS	0	gpio7	gpio7b1	3.3V
			1	uart3gps	uart3gps_ctsn	
			2	gps	gps_rfclk	
			3	gps	gps_clk	
S113	H24	FLASH_TRIGOUT	0	gpio7	gpio7b5	3.3V
			1	isp	isp_flashtrigout	
			2	spi1	spi1_csn0	
S114	H22	LCDC_BL	0	gpio7	gpio7a0	3.3V
			1	pwm	pwm_0	
			2	vop0	vop0_pwm	
			3	vop1	vop1_pwm	
S115	G24	TOUCH_RST		gpio7	gpio7a5	3.3V
S116	F25	LCD_EN		gpio7	gpio7a3	3.3V
S117	E26	LCD_RST		gpio7	gpio7a4	3.3V
S118	F26	TOUCH_INT		gpio7	gpio7a6	3.3V
S119	E25	I2C1_SCL	0	gpio8	gpio8a5	3.3V
			1	i2c1sensor	i2c1sensor_scl	
			2	sc	sc_clk	
S120	A28	I2C1_SDA	0	gpio8	gpio8a4	3.3V
			1	i2c1sensor	i2c1sensor_sda	
			2	sc	sc_rst	
S121	D24	GSEN_INT	0	gpio8	gpio8a0	3.3V
			1	ps2	ps2_clk	
			2	sc	sc_vcc18v	
S122	F24	SPI2_MISO	0	gpio8	gpio8b0	3.3V
			1	spi2	spi2_rxd	
			2	sc	sc_rst	
S123	D26	SPI2_CLK	0	gpio8	gpio8a6	3.3V
			1	spi2	spi2_clk	
			2	sc	sc_io	
S124	D27	SPI2_nCS0	0	gpio8	gpio8a7	3.3V
			1	spi2	spi2_csn0	
			2	sc	sc_detect	

S125	E23	SPI2_MOSI	0	gpio8	gpio8b1	3.3V
			1	spi2	spi2_txd	
			2	sc	sc_clk	
S126	E23	JTAG_TCK		bsjtagtck	bsjtagtck	3.3V
S127	F22	JTAG_DTO		bsjtagtdo	bsjtagtdo	
S128	F21	JTAG_TDI		bsjtagtdi	bsjtagtdi	
S129	G20	JTAG_TMS		bsjtagtms	bsjtagtms	
S130	C27	nJTAG_TRST	0	gpio8	gpio8a1	3.3V
			1	spi2	ps2_data	
			2	sc	sc_vcc33v	
S131	B28	USB2UART_nRST	0	gpio8	gpio8a3	3.3V
			1	spi2	spi2_csn1	
			2	sc	sc_io	
S132	C25	OTG_ID		usb0tg	usb0tg_id	3.3V
S133	D23	OTG_DET		usb0tg	usb0tg_vbus	
S135	B23	HOST1_DP		usbhost1	usbhost1_dp	5V
S136	A23	HOST1_DM		usbhost1	usbhost1_dm	
S138	B22	HOST2_DP		usbhost1	usbhost1_dp	
S139	A22	HOST2_DM		usbhost1	usbhost1_dm	
S141	B26	OTG_DP		usb0tg	usb0tg_dp	
S142	A26	OTG_DM		usb0tg	usb0tg_dm	
S144	---	VCC_EFUSE		Power supply	3.0V output	3.0V
S145		VCCA_33			3.3V output	3.3V
S146		VCC18_DVP			1.8V output	1.8V
S147		VCC28_DVP			2.8V output	2.8V
S148		RTC_PWRIN			3.4V input	3.4V
S149		VCC_18			1.8V output	1.8V
S150		VCC_IO			output	3.3V
S151		VCC_IO				
S152	---	5V IN		power supply	5V input	5V
S153						
S154						
S155						
S156						
S157						
S158						

取自 “http://wiki.myzr.com.cn/index.php?title=MYZR-RK3288-CB314_Hardware_Introduction&oldid=3867”

- 本页面最后修改于2020年10月30日 (星期五) 16:23。
- 除非另有声明，本网站内容采用GNU自由文档许可证1.3或更高版本授权。