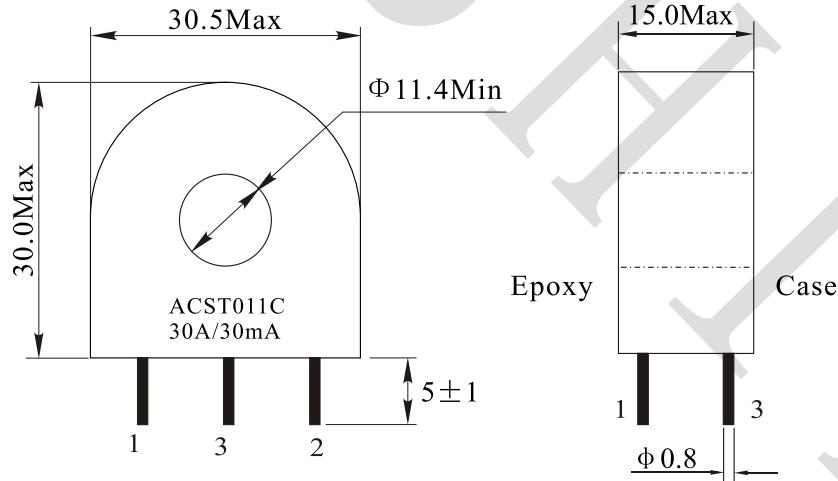
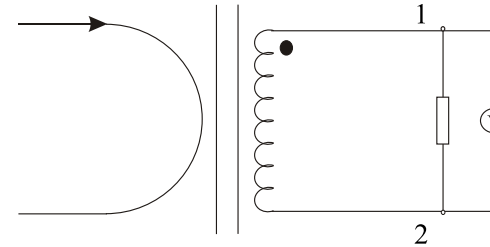


Rev.	Description	Date
A0	New release	2022.09.22

1. PHYSICAL CHARACTERISTICS (mm)



2. ELECTRONICAL SCHEMATIC



3. ELECTRONICAL SPECIFICATIONS

Turns ratio: 1:1000

Input current: 30A Nom.

Max input current: 75A

Output current: 30mA@30A Input

Volt per Amp ratio: 0.1V/A@30A Input, 100 Ω Load

Volt per Amp ratio: 0.098V/A@3A Input, 100 Ω Load

RDC: 48 Ω ± 20%@T=20°C

Hi-Pot: 4KVac Pri to Sec

NAME:	Current Transformer		
CUSTOMER P/N:	AC-1030	DATE:	2022-09-22
SHINHOM P/N:	ACST011C-30A-30mA	REV:	A0
DRAWN BY	CHECKED BY	APPROVE BY	



SHINHOM
SHAANXISHINHOM ENTERPRISE CO LTD

The Document property belong to SHINHOM & is not allowed to be duplicated without authorization