



MULTI-INNOTECHNOLOGY CO., LTD.

www.multi-inno.com

LCD MODULE SPECIFICATION

Model: MI0700A2T-20RP

This module is ROHS compliant

For Customer's Acceptance:

Customer	
Approved by	
Comment	

The standard product specification may change without prior notice in order to improve performance or quality. Please contact Multi-Inno for updated specification and product status before design for the standard product or release of the order.

Revision	1.0
Engineering	
Date	2022-05-20
Our Reference	

CONTENTS

- REVISION RECORD
- GENERAL INFORMATION
- EXTERNAL DIMENSIONS
- ABSOLUTE MAXIMUM RATINGS
- ELECTRICAL CHARACTERISTICS
- ELECTRO-OPTICAL CHARACTERISTICS
- INTERFACE DESCRIPTION
- APPLICATION NOTES
- TOUCH PANEL SPECIFICATIONS
- RELIABILITY TEST
- INSPECTION CRITERION
- PRECAUTIONS FOR USING LCD MODULES
- PRIOR CONSULT MATTER

**■ GENERAL INFORMATION**

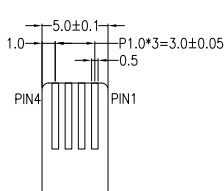
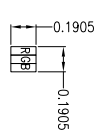
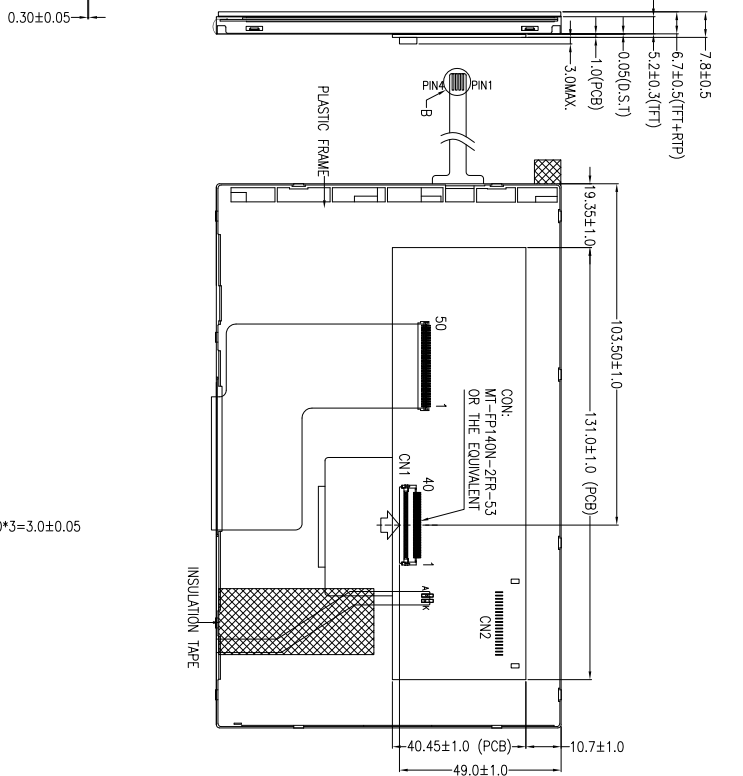
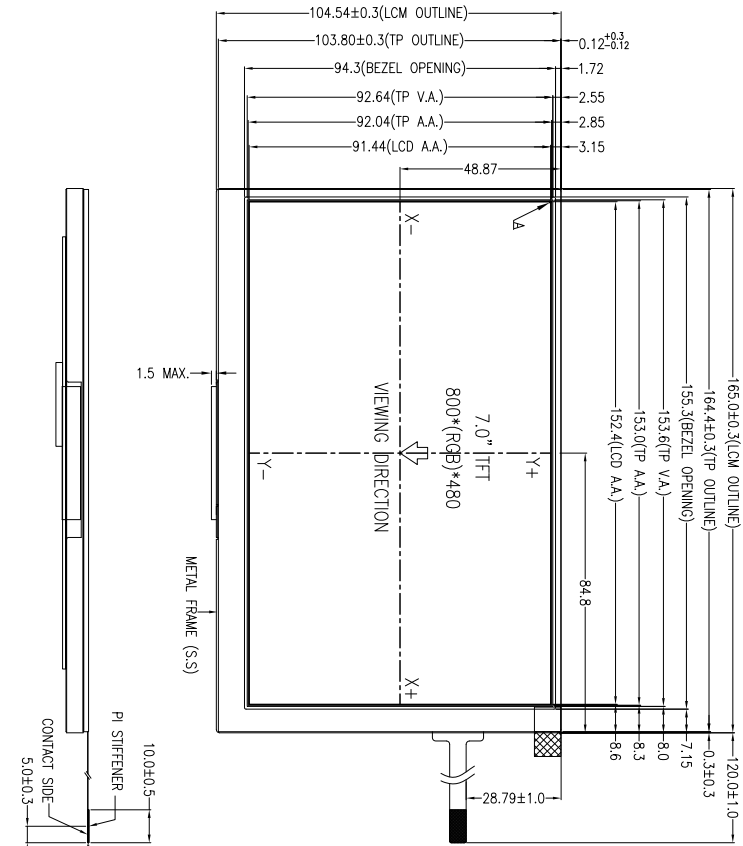
Item	Specification	Unit
LCD Type	TFT / Transmissive / Normally white	/
Size	7.0	Inch
Viewing Direction	12:00 (without image inversion and least brightness change)	O'clock
Gray Scale Inversion Direction	6:00 (contrast peak located at)	O'clock
LCM (W × H × D)	65.00 × 104.54 × 6.70 (Without PCBA)	mm ³
Active Area (W × H)	152.40 × 91.44	mm ²
Pixel Pitch	0.1905 × 0.1905	mm ²
Number of Dots	800 (RGB) × 480	/
Driver IC	EK79713B + EK73202A	/
Backlight Type	24LEDs	/
Interface Type	18-bit RGB	/
Color Depth	262K	/
Pixel Configuration	R.G.B Vertical Stripe	/
Top Polarizer Surface Treatment	Anti-glare	/
Input Voltage	3.3	V
With / Without TSP	With RTP	/
TP Surface Treatment	Anti-glare	/
Weight	TBD	g

Note 1: ROHS compliant;

Note 2: LCM weight tolerance: ±5%.

EXTERNAL DIMENSIONS

NO MECHANICAL HOUSING TO HOLD THE TFT AND THE TOUCH PANEL ON THIS PRODUCT, SO THE END UNIT'S MECHANICAL DESIGN MUST INCLUDE A HOUSING FOR PREVENTING THE SEPARATION OF THE TFT AND THE TOUCH PANEL.



PIN ASSIGNMENT FOR LCM:	PIN SYMBOL
1	GND
2	GND
3	BL_ADJ
4	VBL
5	VBL
6	VBL
7	VCC
8	VCC
9	DE
10	GND
11	GND
12	GND
13	B5
14	B4
15	B3
16	GND
17	B2
18	B1
19	B0
20	GND
21	G5
22	G4
23	G3
24	GND
25	G2
26	G1
27	G0
28	GND
29	R5
30	R4
31	R3
32	GND
33	R2
34	R1
35	RD
36	GND
37	GND
38	CLK
39	GND
40	GND

PIN ASSIGNMENT FOR RTP:	PIN SYMBOL
1	Y+
2	Y+
3	Y-
4	X-

- NOTES:
1. DISPLAY TYPE: TFT, TRANSMISSIVE, NORMALLY WHITE
 2. OPERATING VOLTAGE: VCC=3.3V (TYP)
 3. VIEWING DIRECTION: 12 O'CLOCK
 4. DRIVER IC: EK7971BE + EK73202A
 5. OPERATING TEMP.: -20°C ~ 70°C
 6. STORAGE TEMP.: -30°C ~ 80°C
 7. BACKLIGHT: 24-CHIP WHITE LED
 8. SURFACE LUMINANCE: 330CD/M² (TYP)
 9. TOP POLARIZER SURFACE TREATMENT: ANTI-GLARE
 10. ON1 PADS FOR RGB INTERFACE
 11. ON2 FOR RESERVED LVDS INTERFACE
 12. ONLY THE SINGLE LAYER AREA ON FPC IS BENDABLE AND THE MINIMUM BEND RADIUS IS 1.5MM
 13. GENERAL TOLERANCE: ±0.3MM

01	FIRST ISSUE	RITA	2022.05.20	VERSION NO.: 01	MODULE P/N: MI0700A2T-20RP
VER.	REVISION DESCRIPTION	REVISER	DATE	VERSION NO.	DESCRIPTION: TFT + RTP MODULE
DRAWN BY: RITA		2022.05.20		MODULE P/N: MI0700A2T-20RP	
CHECKED BY:		APPROVED BY:		DESCRIPTION: TFT + RTP MODULE	
UNIT: mm		SCALE: 1/1		SHEET NO.: 1/1	

MULTI-INNO TECHNOLOGY CO., LTD.

■ BSOLUTE MAXIMUM RATINGS

Parameter	Symbol	Min.	Max.	Unit
Power Supply Voltage	VCC	-0.3	5.0	V
Operating Temperature	T _{OP}	-20	70	°C
Storage Temperature	T _{ST}	-30	80	°C

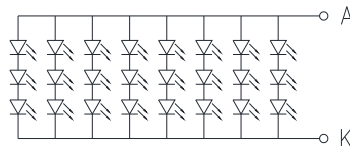
■ ELECTRICAL CHARACTERISTICS

Parameter	Symbol	Min.	Typ.	Max.	Unit	Notes
Power Supply Voltage	VCC	3.0	3.3	3.6	V	
Power Supply Current	ICC	-	210	-	mA	Black Pattern
Power Supply Voltage for Backlight Driver	VBL	3.0	3.3	5.5	V	
Power Supply Current for Backlight Driver	IBL	-	650	850	mA	VBL=3.3V
		-	400	550	mA	VBL=5.0V
Input Voltage 'H' Level	VIH	0.7VCC	-	VCC	V	
Input Voltage 'L' Level	VIL	0	-	0.3VCC	V	
BL_ADJ Frequency		15K	20K	25K	Hz	
BL_ADJ Input Voltage	VIH	3.0	-	3.3	V	
	VIL	0	-	0.3	V	
Backlight Life Time		30,000	50,000	-	Hrs.	Note 1

Note 1: The backlight driver is built-in this module and the brightness of backlight can be adjusted by PWM signal via BL_ADJ

Note 2: Operating life time means brightness goes down to 50% initial brightness;
 The life time of backlight will be reduced if backlight is driven by high current, high ambient temperature and humidity conditions.
 Typical operating life time is an estimated data.

Note 3: Backlight circuit diagram refer to below (If=160mA, Vf=8.4V~10.2V):



■ ELECTRO-OPTICAL CHARACTERISTICS

Ta=25°C±2°C. VCC=3.3V, ILED=160mA.

Parameter		Symbol	Condition	Min.	Typ.	Max.	Unit	Remark	Notes
Response Time		Tr + Tf	θ=0°	-	20	30	ms	FIG 1, 2	4
Contrast Ratio		Cr		700	1000	-	---	FIG 1, 3	1
Luminance Uniformity		δ White		-	80	-	%	FIG 1, 3	3
Surface Luminance		Lv		260	330	-	cd/m ²	FIG 1, 3	2
Viewing Angle Range		θ	∅ = 90°	50	60	-	deg	FIG 1, 4	1, 6
			∅ = 270°	60	70	-	deg		
			∅ = 0°	60	70	-	deg		
			∅ = 180°	60	70	-	deg		
CIE (x,y) Chromaticity	Red	x	θ=0°	TBD	TBD	TBD	---	FIG 1, 3	5
		y		TBD	TBD	TBD			
	Green	x		TBD	TBD	TBD			
		y		TBD	TBD	TBD			
	Blue	x		TBD	TBD	TBD			
		y		TBD	TBD	TBD			
	White	x		TBD	TBD	TBD			
		y		TBD	TBD	TBD			
NTSC		-	-	-	TBD	-	%	-	-

Note 1. Contrast Ratio (CR) is defined by following formula. For more information see FIG 3.

$$\text{Contrast Ratio} = \frac{\text{Average Surface Luminance with all white pixels (P1, P2, P3, P4, P5)}}{\text{Average Surface Luminance with all black pixels (P1, P2, P3, P4, P5)}}$$

Note 2. Surface luminance is the LCD surface luminance with all pixels displaying white state. For more information see FIG 3.

$$L_v = \text{Average Surface Luminance with all white pixels (P1, P2, P3, P4, P5)}$$

Note 3. The uniformity in surface luminance (δ White) is determined by measuring luminance at each test position 1 through 5, and then dividing the maximum luminance of 5 points luminance by minimum luminance of 5 points luminance. For more information see FIG 3.

$$\delta \text{ White} = \frac{\text{Minimum Surface Luminance with all white pixels (P1, P2, P3, P4, P5)}}{\text{Maximum Surface Luminance with all white pixels (P1, P2, P3, P4, P5)}}$$

Note 4. Response time is the time required for the display to transition from white to black (Rise Time, Tr) and from black to white (Fall Time, Tf). For additional information see FIG 2.

Note 5. CIE (x,y) chromaticity, color coordinates measured at center point of LCD.

Note 6. Viewing angle is the angle at which the contrast ratio is greater than a specific value. For TFT module, the specific value of contrast ratio is 10. For monochrome module, the specific value of contrast ratio is 2. The angles are determined for the horizontal or x axis and the vertical or y axis with respect to the z axis which is normal to the LCD surface. For more information see FIG 4.

Note 7. For viewing angle and response time testing, the testing data is based on Autronic-Melchers's ConoScope. Series Instruments. For contrast ratio, Surface luminance, Luminance uniformity, and CIE, the test data is based on TOPCON's BM-5 photo detector.

FIG 1. The setup of optical measurement.

The optical characteristics should be measured in a stable, windless, and dark room.

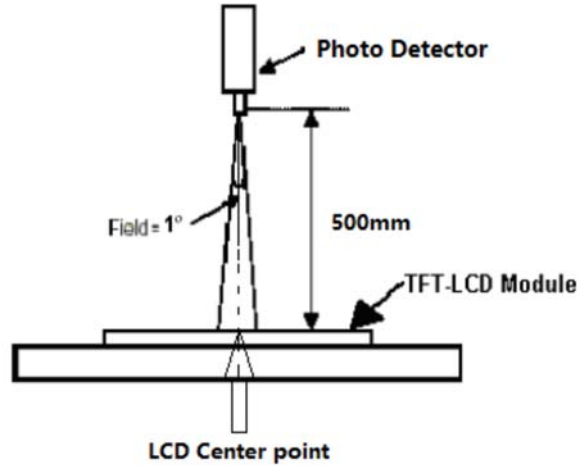


FIG 2. The Definition of Response Time

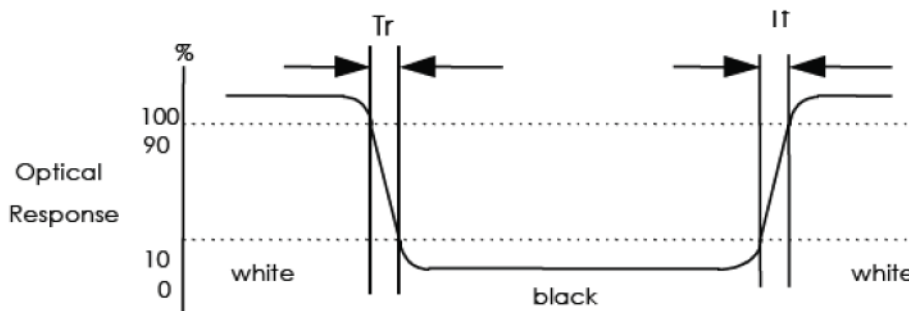
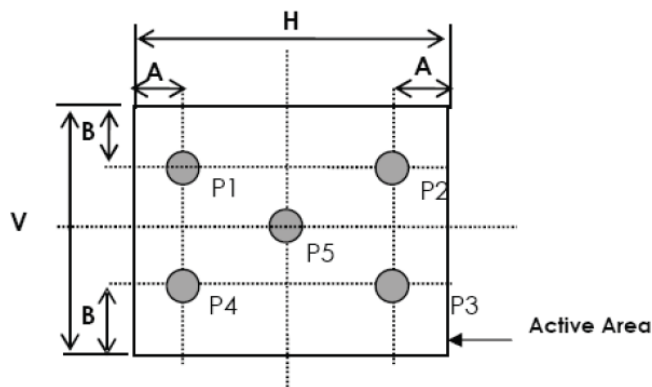


FIG 3. Measuring method for contrast ratio, surface luminance, Luminance uniformity, CIE (x,y) chromaticity.



A: $H/6$

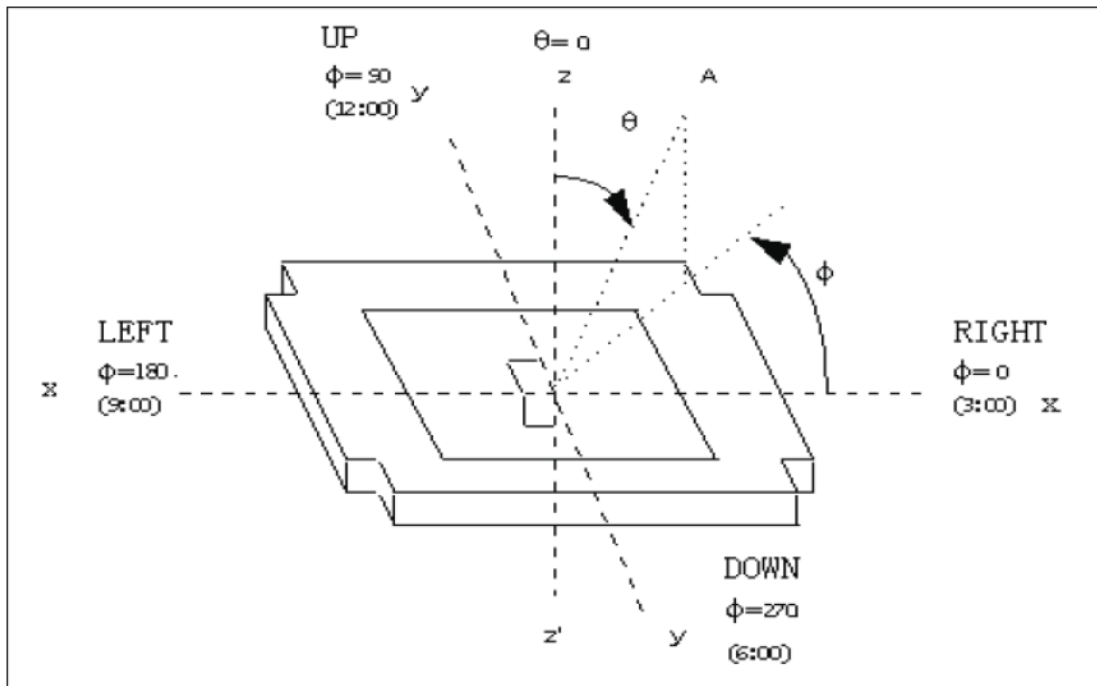
B: $V/6$

H, V: Active Area

Light spot size $\varnothing = 7\text{mm}$, 500mm distance from the LCD surface to detector lens.

Measurement instrument is TOPCON's luminance meter BM-5.

FIG 4. The definition of viewing angle



■ INTERFACE DESCRIPTION

1. LCM Pin Definition

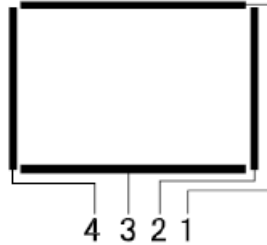
Pin No.	Symbol	I/O/P	Description
1	GND	P	Ground.
2	GND	P	Ground.
3	BL_ADJ	P	Brightness control for LED B/L (1: turn on; 0: turn off).
4	VBL	P	Power supply for LED driver.
5	VBL	P	Power supply for LED driver.
6	VBL	P	Power supply for LED driver.
7	VCC	P	Power supply for digital circuit.
8	VCC	P	Power supply for digital circuit.
9	DE	I	Data Enable.
10	GND	P	Ground.
11	GND	P	Ground.
12	GND	P	Ground.
13	B5	I	Blue data (MSB).
14	B4	I	Blue data.
15	B3	I	Blue data.
16	GND	P	Ground.
17	B2	I	Blue data.
18	B1	I	Blue data.
19	B0	I	Blue data (LSB).
20	GND	P	Ground.
21	G5	I	Green data (MSB).
22	G4	I	Green data.
23	G3	I	Green data.
24	GND	P	Ground.
25	G2	I	Green data.
26	G1	I	Green data.
27	G0	I	Green data (LSB).
28	GND	P	Ground.
29	R5	I	Red data (MSB).
30	R4	I	Red data.
31	R3	I	Red data.
32	GND	P	Ground.
33	R2	I	Red data.
34	R1	I	Red data.
35	R0	I	Red data (LSB).
36	GND	P	Ground.
37	GND	P	Ground.
38	DCLK	I	Clock signals; Latch data at the falling edge.
39	GND	P	Ground.
40	GND	P	Ground.

Note: I/O/P definition: I----Input O----Output P----Power/Ground

2. Touch Screen Panel Section

Pin No.	Symbol	Description
1	YU	Top electrode-differential analog.
2	XR	Right electrode-differential analog.
3	YD	Bottom electrode-differential analog.
4	XL	Left electrode-differential analog.

Note: Touch screen panel block



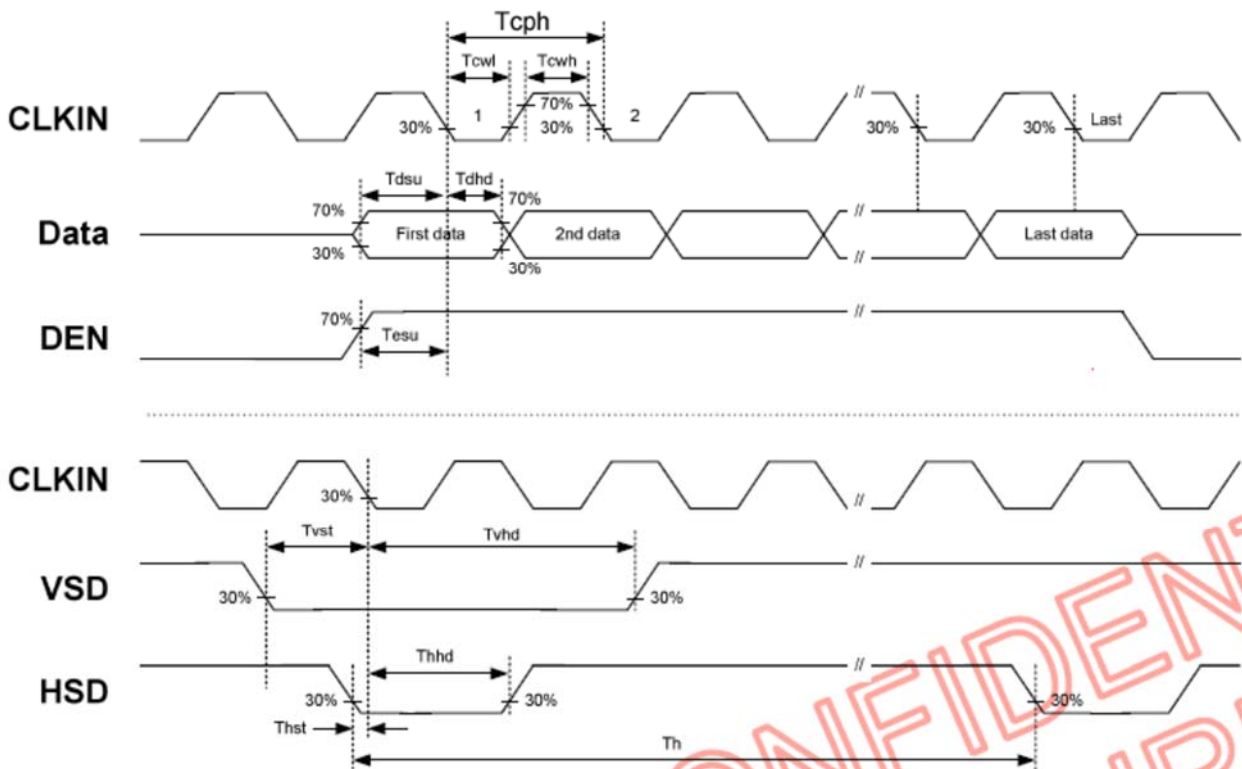
APPLICATION NOTES

1. AC Characteristics

1.1 AC Electrical Characteristics

Parameter	Symbol	Min.	Typ.	Max.	Unit
HS setup time	Thst	8	-	-	ns
HS hold time	Thhd	8	-	-	ns
VS setup time	Tvst	8	-	-	ns
VS hold time	Tvhd	8	-	-	ns
Data setup time	Tdsu	8	-	-	ns
Data hold time	Tdhd	8	-	-	ns
DE setup time	Tesu	8	-	-	ns
DE hold time	Tehd	8	-	-	ns
RESET pulse width	Trst	1	-	-	ms
DCLK cycle time	Tcph	20	-	-	ns
DCLK pulse duty	Tcwh	40	50	60	%s

1.2 Clock and Data Input Waveforms



1.3 Timing

Parameter	Symbol	Min.	Typ.	Max.	Unit
Horizontal display area	thd	-	800	-	DCLK
DCLK frequency	fclk	26.4	33.3	46.8	MHz
One horizontal line	th	862	1056	1200	DCLK
HS pulse width	thpw	1	6	40	DCLK
HS blanking	thb	46	46	46	DCLK
HS front porch	thfp	16	204	354	DCLK

Parameter	Symbol	Min.	Typ.	Max.	Unit
Vertical display area	tvd	-	480	-	TH
VS period time	tv	510	525	650	TH
VS pulse width	tvpw	1	3	20	TH
VS blanking	tvb	23	23	23	TH
VS front porch	tvfp	7	22	147	TH

Note: Frame rate is 60±5Hz

1.4 Data Input Format

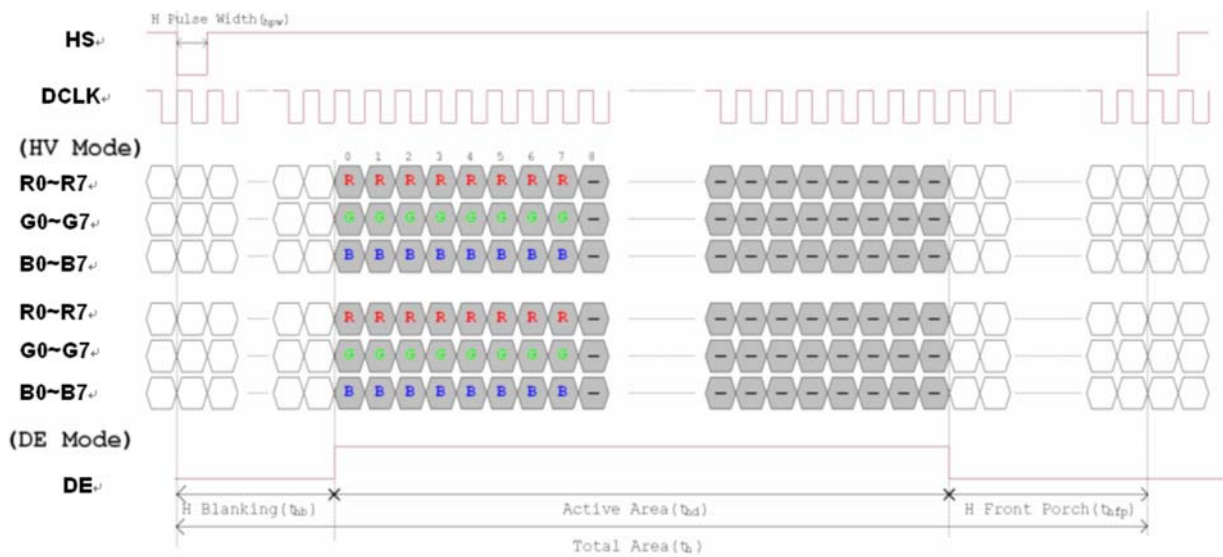


Figure 1. Horizontal input timing diagram

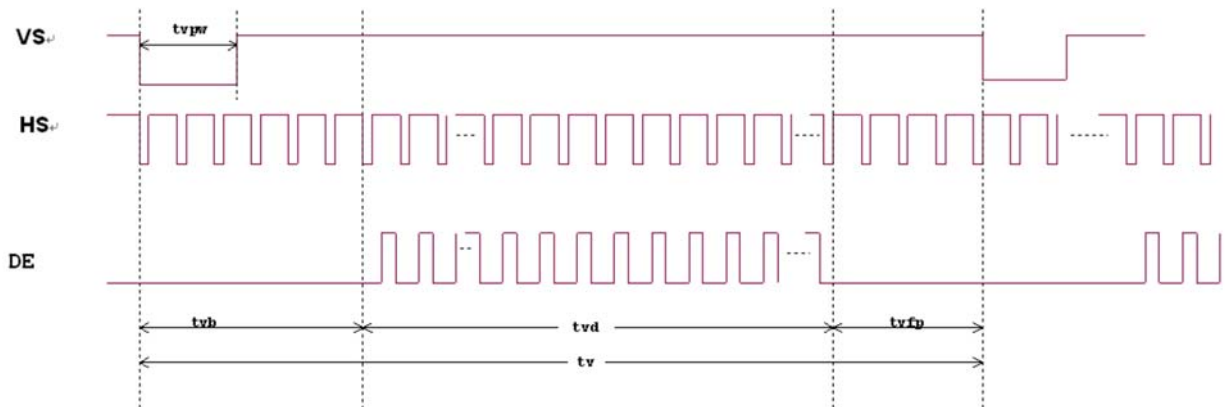


Figure 2. Vertical input timing diagram

■ TOUCH PANEL SPECIFICATIONS

1. Electrical Characteristics

Parameter	Min.	Typ.	Max.	Unit	Remark
Linearity	-	-	1.5	%	Analog X and Y directions
Terminal Resistance	350	-	1050	Ω	X (Film side)
	100	-	600	Ω	Y (Glass side)
Insulation Resistance	20	-	-	M Ω	DC 25V
Voltage	-	-	10	V	DC
Chattering	-	-	10	ms	100k Ω pull-up
Transparency	78	-	-	%	

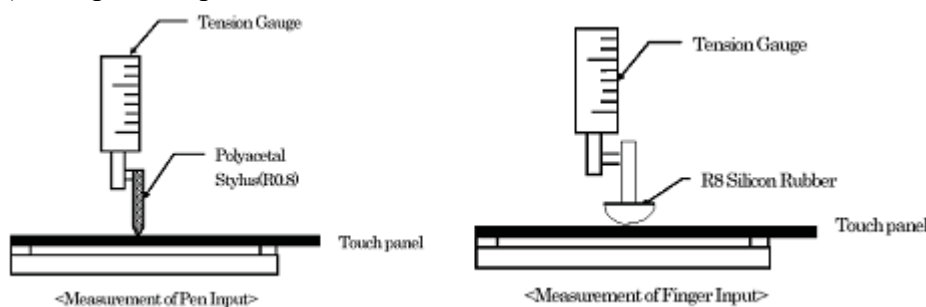
Note: Avoid operating with hard or sharp material such as a ball point pen or a mechanical pencil except a polyacetal pen (tip R0.8mm or less) or a finger.

2. Mechanical & Reliability Characteristics

Parameter	Min.	Typ.	Max.	Unit	Remark
Activation Force	-	-	80	gf	Note 1
Durability-surface Scratching	Write 100,000	-	-	characters	Note2
Durability-surface Pitting	1,000,000	-	-	touches	Note 3
Surface Hardness	3	-	-	H	JIS K5400

Note 1: Activation force test condition

- (1) Input DC 5V on X direction, drop off Polyacetal Stylus (R0.8), until output voltage stabilize, then get the activation force.
- (2) R8.0mm Silicon rubber for finger Activation force test.
- (3) Test point: 9 points.



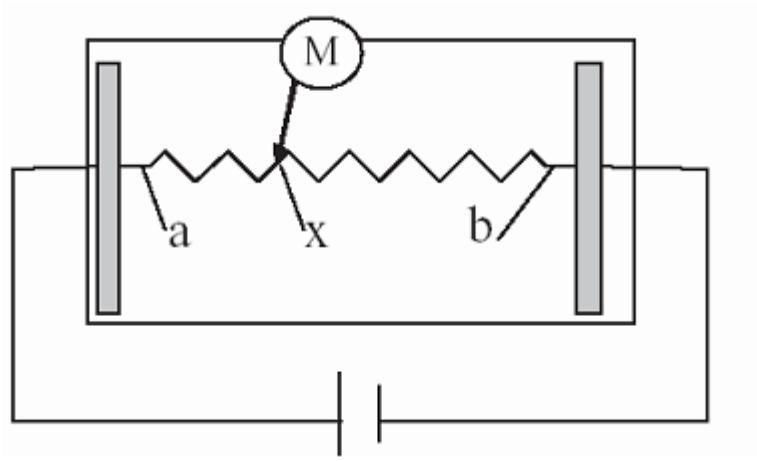
Note 2: Measurement for surface area.

- (1) Scratch 100,000 times straight line on the film with a stylus change every 20,000 times.
- (2) Force: 250gf.
- (3) Speed: 60mm/sec.
- (4) Stylus: R0.8 polyacetal tip.

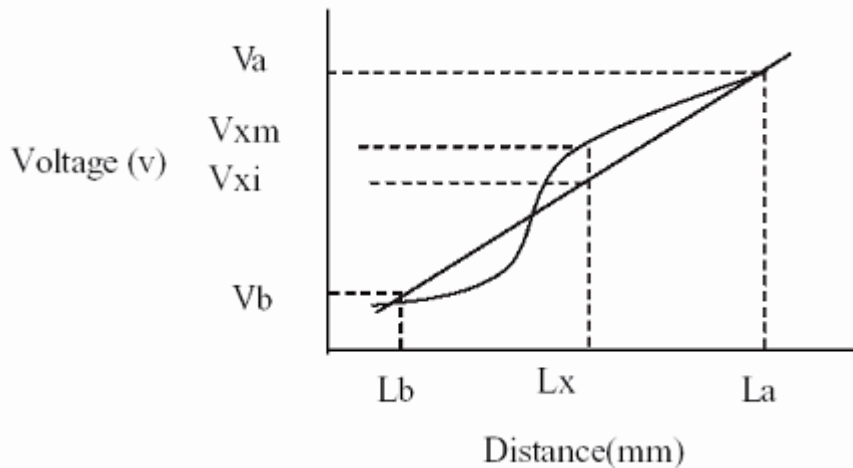
Note 3: Pit 1,000,000 times on the film with a R0.8 silicon rubber.

- (1) Force: 250gf.
- (2) Speed: 2times/sec.

3. Linearity Definition

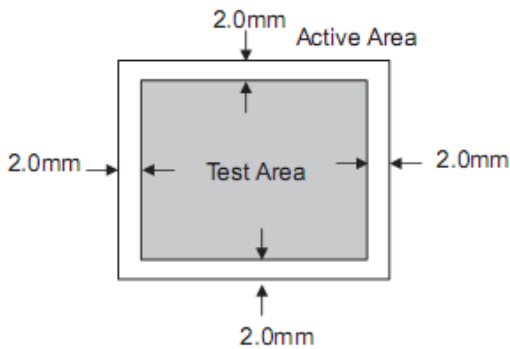


- Va: maximum voltage in the active area of touch panel.
- Vb: minimum voltage in the active area of touch panel.
- X: random measuring point.
- Vxm: actual voltage of Lx point.
- Vxi: theoretical voltage of Lx point.

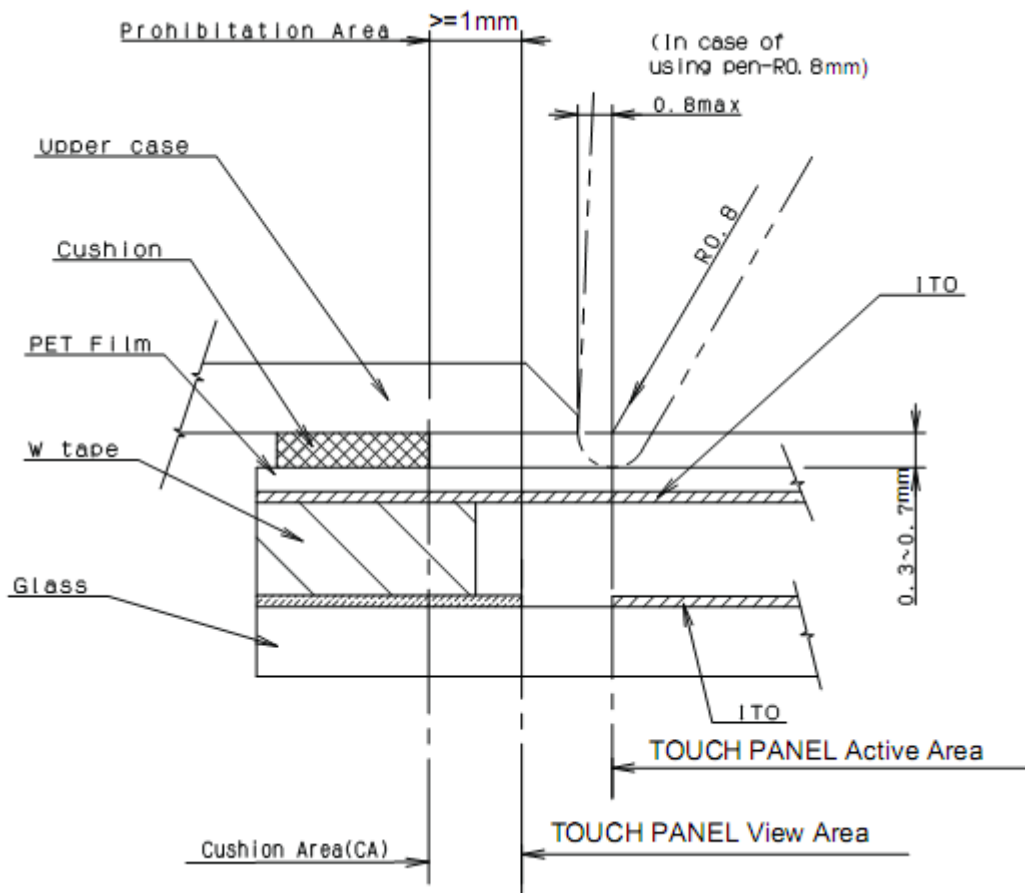


$$\text{Linearity} = \frac{|V_{xi} - V_{xm}|}{(V_a - V_b)} * 100\%$$

Note: Test area is as follows and operation force is 150gf.



4. Design Guidance for The Upper Case and Cushion



Note 1: Upper case opening

- (1) Please place the upper case opening to maintain the operation by a stylus pen inside the TP response area.
- (2) The any pressures in the area between TP response area and TP viewing area is prohibited.
- (3) Please use the appropriate material (PMMA, PC, etc.) as the upper case.

Note 2: Cushion design

- (1) Please put the cushion on the upper case.
- (2) Do not use an adhesive tape to stick on the TP surface.
- (3) Please position the cushion over the cushion area to avoid a short.



■ RELIABILITY TEST

No.	Test Item	Test Condition	Remark
1	High Temperature Storage Test	80°C ± 2°C / 240Hrs.	IEC60068-2-2 GB2423.2
2	Low Temperature Storage Test	-30°C ± 2°C / 240Hrs.	IEC60068-2-1 GB2423.1
3	High Temperature Operating Test	70°C ± 2°C / 240Hrs.	IEC60068-2-2 GB2423.2
4	Low Temperature Operating Test	-20°C ± 2°C / 240Hrs.	IEC60068-2-1 GB2423.1
5	High Temperature and High Humidity Operation Test	60 ± 5°C, 90%RH 240Hrs.	IEC60068-2-3 GB/T2423.3
6	Thermal Shock Test (Non-operating)	-30±2°C(30Min.)~25±2°C(5Min.)~80±2°C(30Min.) 100Cycles	IEC60068-2-14 GB2423.22
7	Vibration Test (Non-operating)	Frequency: 10~55Hz Amplitude: 1.5mm Sweep Time: 11Mins Test Period: 6 Cycles For Each Direction of X, Y, Z (Packing Condition)	IEC60068-2-6 GB2423.10
8	Shock Test (Non-operating)	100G, 6Ms Direction: ±X, ±Y, ±Z Cycle: 3 Times	IEC60068-2-27 GB/T2423.5
9	Electro Static Discharge Test	R: 330Ω, C:150pF, 5points/panel Air: ±8KV, 5times; Contact: ±4KV, 5times; (Environment: 15°C~35°C, 30%~60%, 86Kpa~106Kpa)	IEC61000-4-2 GB/T17626.2

Note 1: Without water condensation.

Note 2: The function test shall be conducted after 2 hours storage at the room temperature (25°C±2°C) and room humidity (65%±5%) after removed from the test chamber. In the standard conditions, there shall be no functional defects occurred.

INSPECTION CRITERION

<p style="text-align: center;">OUTGOING QUALITY STANDARD</p>	PAGE 1 OF 5
TITLE: FUNCTIONAL TEST & INSPECTION CRITERIA	

This specification is made to be used as the standard acceptance/rejection criteria for TFT module.

1. Sample Plan

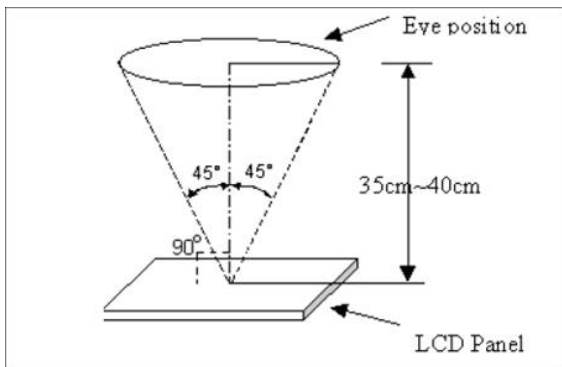
- 1.1 Lot size: Quantity per shipment lot per model
- 1.2 Sampling type: Normal inspection, Single sampling
- 1.3 Inspection level: II
- 1.4 Sampling table: MIL-STD-105D
- 1.5 Acceptable quality level (AQL)
 - Major defect: AQL=0.65
 - Minor defect: AQL=1.50

2. Inspection Condition

- 2.1 Ambient conditions
 - a. Temperature: Room temperature $25\pm 5^{\circ}\text{C}$
 - b. Humidity: $(60\pm 10)\% \text{RH}$
 - c. Illumination: Single fluorescent lamp non-directive (300 to 700 Lux)
- 2.2 Viewing distance

The distance between the LCD and the inspector's eyes shall be at least $35\pm 5\text{cm}$.
- 2.3 Viewing angle

U/D: $45^{\circ} / 45^{\circ}$, L/R: $45^{\circ} / 45^{\circ}$



3. Definition of Inspection Item

3.1 Definition of inspection zone in LCD module (LCM)

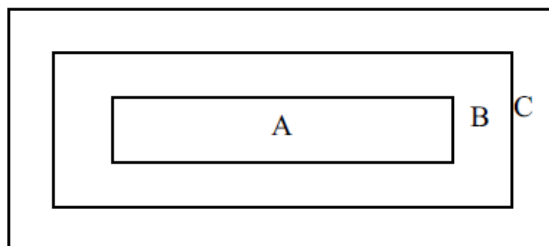


Fig.1 Inspection zones in an LCD

- Zone A: Character / Digit area (Active area)
- Zone B: Viewing area except Zone A (Zone A+Zone B=minimum viewing area)
- Zone C: Outside viewing area (invisible area after assembly in customer's product)

	OUTGOING QUALITY STANDARD	PAGE 2 OF 5
--	---------------------------	-------------

TITLE: FUNCTIONAL TEST & INSPECTION CRITERIA
--

Note: As a general rule, visual defects in Zone C are permissible, when it is no trouble for quality and assembly of customer's product. If any visual defect in Zone C is impermissible, customers need to inform us by written.

4. Inspection Plan

Defects are classified as major defects and minor defects according to the degree of defectiveness defined herein.

4.1 Major defect

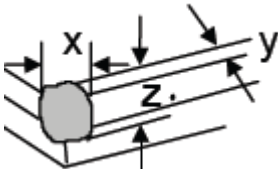
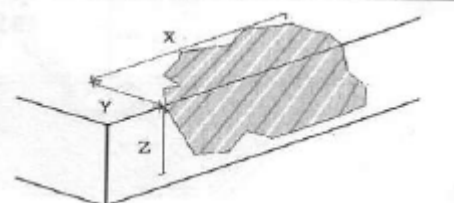
Item No.	Items To Be Inspected	Inspection Standard
4.1.1	All Functional Defects	1) No display 2) Display abnormally 3) Short circuit 4) Line defect 5) Excess power consumption
4.1.2	Missing	Missing function component
4.1.3	Crack	Glass crack

4.2 Minor defect

Item No.	Items To Be Inspected	Inspection Standard	
4.2.1	Spot Defect Including Black spot White spot Pinhole Foreign particle Polarizer dirt	For dark / white spot is defined $\varphi = (x+y) / 2$	
		Size φ (mm)	Acceptable Quantity
		$\varphi \leq 0.25$ 2mm(min) apart	Ignore
		$0.25 < \varphi \leq 0.50$ 5mm(min) apart	5
		$0.50 < \varphi$	Not allowed

OUTGOING QUALITY STANDARD		PAGE 3 OF 5	
TITLE: FUNCTIONAL TEST & INSPECTION CRITERIA			
4.2.2	Line Defect Including Black line White line Scratch	Defined 	
		Width (mm) Length (mm)	Acceptable Quantity
		$W \leq 0.05$ and $L \leq 10$	Ignore
		$0.05 < W \leq 0.08$ and $L \leq 10$ 5mm(min) apart	5
		$0.08 < W \leq 0.10$ and $L \leq 5$ 5mm(min) apart	3
		$0.10 < W$ or $10 < L$	Not allowed
4.2.3	Polarizer Dent / Bubble	Size φ (mm)	Acceptable Quantity
		$\varphi \leq 0.30$	Ignore
		Non visible area	Ignore
		$0.30 < \varphi \leq 0.50$ 5mm(min) apart	5
		$0.50 < \varphi$	Not allowed
4.2.4	Electrical Dot Defect	Bright and black dot define: and 	
		Inspection pattern: Full white, Full black, Red, Green and Blue screens	
		Item	Acceptable Quantity
		Black dot defect	5
		Bright dot defect	2
Total Dot	5		

	<p>OUTGOING QUALITY STANDARD</p>	<p>PAGE 4 OF 5</p>
<p>TITLE: FUNCTIONAL TEST & INSPECTION CRITERIA</p>		

<p>4.2.5</p>	<p>Touch Panel Chips</p>	<p>1. Corner chips:</p> 	
		<p>Size (mm)</p>	<p>Acceptable Quantity</p>
		<p> $X \leq 3\text{mm}$ $Y \leq 3\text{mm}$ $Z \leq T$ </p>	<p>Ignore T: Glass thickness X: Length Y: Width Z: Thickness</p>
		<p>2. Side chips:</p> 	
<p>4.2.6</p>	<p>Touch Panel Newton Ring</p>	<p>Size (mm)</p>	<p>Acceptable Quantity</p>
		<p> $X \leq 5\text{mm}$ $Y \leq 3\text{mm}$ $Z \leq T$ </p>	<p>Ignore T: Glass thickness X: Length Y: Width Z: Thickness</p>
<p>4.2.6</p>	<p>Touch Panel Newton Ring</p>	<p>Compare with limit sample</p>	

Note: 1. Dot defect is defined as the defective area of the dot area is larger than 50% of the dot area.
2. The distance between black dot defects or black and bright dot defects should be more than 5mm apart. The distance between two bright dot defects should be more than 15mm apart.
3. Polarizer bubble is defined as the bubble appears on active display area. The defect of polarizer bubble shall be ignored if the polarizer bubble appears on the outside of active display area.
4. Mura is checker by 6% ND filter.
5. Foreign particle on the surface of the LCM should be ignore.

■ PRECAUTIONS FOR USING LCD MODULES

◆ Handling Precautions

1. The display panel is made of glass and polarizer. As glass is fragile. It tends to become or chipped during handling especially on the edges. Please avoid dropping or jarring. Do not subject it to a mechanical shock by dropping it or impact.
2. If the display panel is damaged and the liquid crystal substance leaks out, be sure not to get any in your mouth. If the substance contacts your skin or clothes, wash it off using soap and water.
3. Do not apply excessive force to the display surface or the adjoining areas since this may cause the color tone to vary. Do not touch the display with bare hands. This will stain the display area and degraded insulation between terminals (some cosmetics are determined to the polarizer).
4. The polarizer covering the display surface of the LCD module is soft and easily scratched. Handle this polarizer carefully. Do not touch, push or rub the exposed polarizers with anything harder than an HB pencil lead (glass, tweezers, etc.). Do not put or attach anything on the display area to avoid leaving marks on. Condensation on the surface and contact with terminals due to cold will damage, stain or dirty the polarizer. After products are tested at low temperature they must be warmed up in a container before coming is contacting with room temperature air.
5. If the display surface becomes contaminated, breathe on the surface and gently wipe it with a soft dry cloth. If it is heavily contaminated, moisten cloth with one of the following solvents.
 - Isopropyl alcohol
 - Ethyl alcohol

Do not scrub hard to avoid damaging the display surface.

6. Solvents other than those above-mentioned may damage the polarizer. Especially, do not use the following.
 - Water
 - Ketone
 - Aromatic solvents
7. Wipe off saliva or water drops immediately, contact with water over a long period of time may cause deformation or color fading. Avoid contacting oil and fats.
8. Exercise care to minimize corrosion of the electrode. Corrosion of the electrodes is accelerated by water droplets, moisture condensation or a current flow in a high-humidity environment.
9. Install the LCD Module by using the mounting holes. When mounting the LCD module make sure it is free of twisting, warping and distortion. In particular, do not forcibly pull or bend the I/O cable or the backlight cable.
10. Do not attempt to disassemble or process the LCD module.
11. If the logic circuit power is off, do not apply the input signals.
12. Electro-Static Discharge Control. Since this module uses a CMOS LSI, the same careful attention should be paid to electrostatic discharge as for an ordinary CMOS IC. To prevent destruction of the elements by static electricity, be careful to maintain an optimum work environment.
13. Electro-Static Discharge Control. Since this module uses a CMOS LSI, the same careful attention should be paid to electrostatic discharge as for an ordinary CMOS IC. To prevent destruction of the elements by static electricity, be careful to maintain an optimum work environment.
 - Before remove LCM from its packing case or incorporating it into a set, be sure the module and your body have the same electric potential. Be sure to ground the body when handling the LCD modules.
 - Tools required for assembling, such as soldering irons, must be properly grounded. make certain the AC power source for the soldering iron does not leak. When using an electric screwdriver to attach LCM, the screwdriver should be of ground potentiality to minimize as much as possible any transmission of electromagnetic waves produced sparks coming from the commutator of the motor.



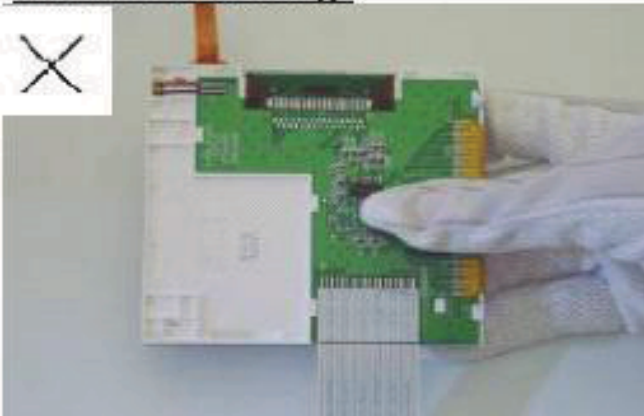
- To reduce the amount of static electricity generated, do not conduct assembling and other work under dry conditions. To reduce the generation of static electricity be careful that the air in the work is not too dried. A relative humidity of 50%-60% is recommended. As far as possible make the electric potential of your work clothes and that of the work bench the ground potential
- The LCD module is coated with a film to protect the display surface. Exercise care when peeling off this protective film since static electricity may be generated.
- Since LCM has been assembled and adjusted with a high degree of precision, avoid applying excessive shocks to the module or making any alterations or modifications to it.
- Do not alter, modify or change the shape of the tab on the metal frame.
- Do not make extra holes on the printed circuit board, modify its shape or change the positions of components to be attached.
- Do not damage or modify the pattern writing on the printed circuit board.
- Absolutely do not modify the zebra rubber strip (conductive rubber) or heat seal connector.
- Except for soldering the interface, do not make any alterations or modifications with a soldering iron.
- Do not drop, bend or twist LCM.

◆ Handling Precaution for LCM

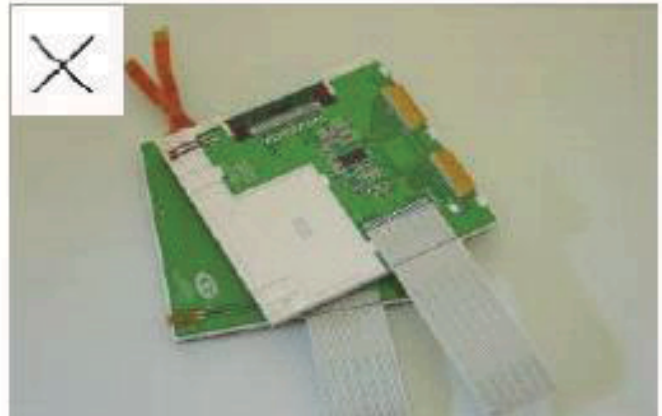
LCM is easy to be damaged.
Please note below and be careful for handling!

Correct handling:

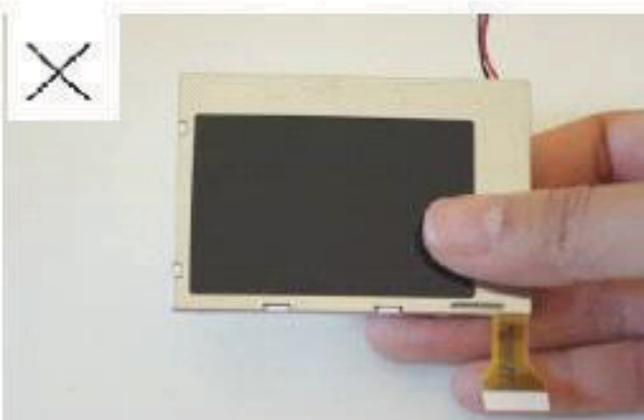
As above picture, please handle with anti-static gloves around LCM edges.

Incorrect handling:

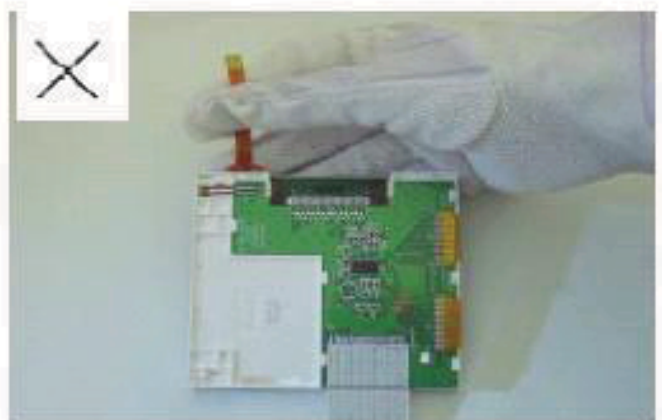
Please don't touch IC directly.



Please don't stack LCM.



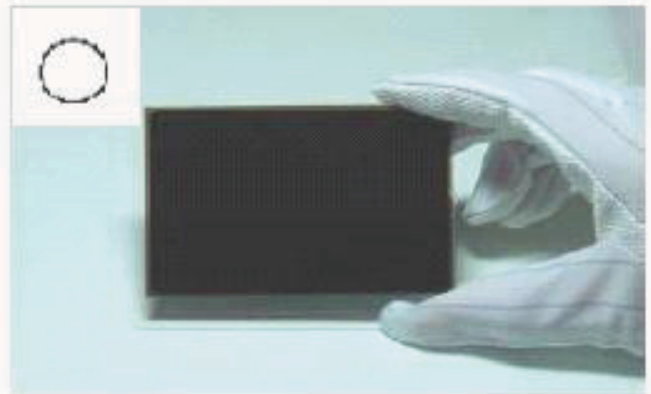
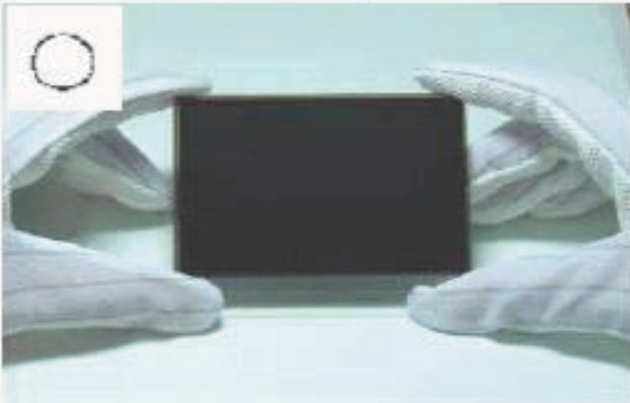
Please don't hold the surface of panel.



Please don't stretch interface of output, such as FPC cable.

◆ Handling Precaution for LCD

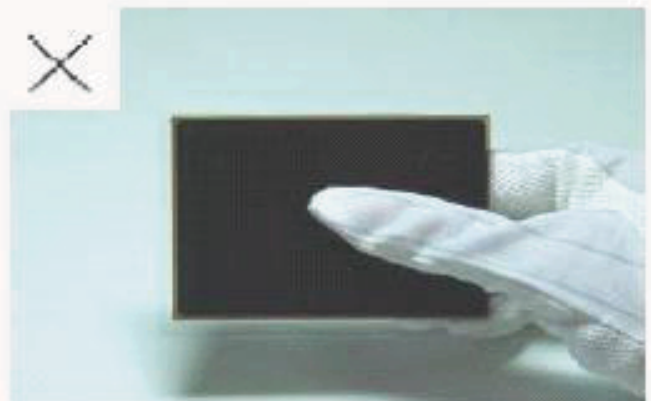
LCD is easy to be damaged.
Please note below and be careful for handling!

Correct handling:

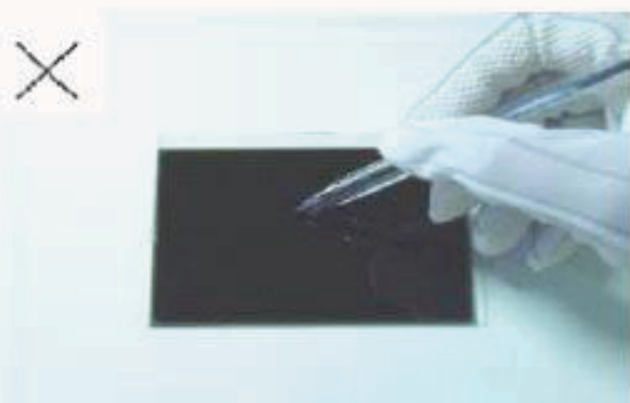
As above photo, please handle with anti-static gloves around LCD edges.

Incorrect handling:

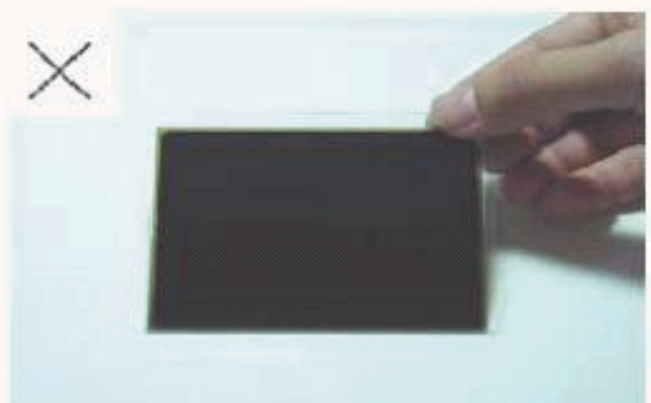
Please don't stack the LCDS.



Please don't hold the surface of LCD.



Please don't operate with sharp stick such as pens.



Please don't touch ITO glass without anti-static gloves.

◆ Storage Precautions

When storing the LCD modules, the following precaution is necessary.

1. Store them in a sealed polyethylene bag. If properly sealed, there is no need for the desiccant.
2. Store them in a dark place. Do not expose to sunlight or fluorescent light, keep the temperature between 0°C and 35°C, and keep the relative humidity between 40%RH and 60%RH.
3. The polarizer surface should not come in contact with any other objects. (We advise you to store them in the anti-static electricity container in which they were shipped.)

◆ Others

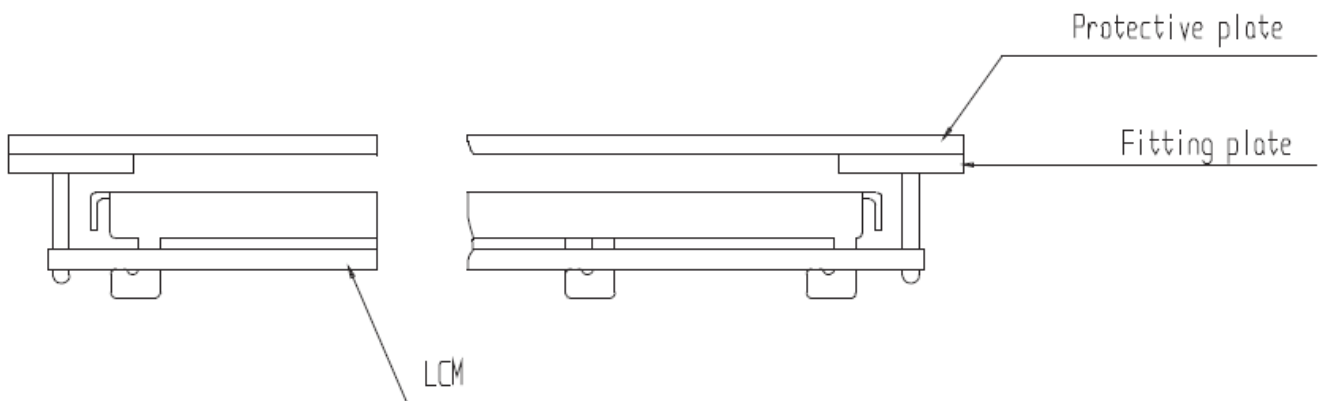
1. Liquid crystals solidify under low temperature (below the storage temperature range) leading to defective orientation or the generation of air bubbles (black or white). Air bubbles may also be generated if the module is subject to a low temperature.
2. If the LCD modules have been operating for a long time showing the same display patterns, the display patterns may remain on the screen as ghost images and a slight contrast irregularity may also appear. A normal operating status can be regained by suspending use for some time. It should be noted that this phenomenon does not adversely affect performance reliability.
3. To minimize the performance degradation of the LCD modules resulting from destruction caused by static electricity etc., exercise care to avoid holding the following sections when handling the modules.
 - Exposed area of the printed circuit board.
 - Terminal electrode sections.

◆ Using LCD Modules

1. Installing LCD Modules

1.1 The hole in the printed circuit board is used to fix LCM as shown in the picture below. Attend to the following items when installing the LCM.

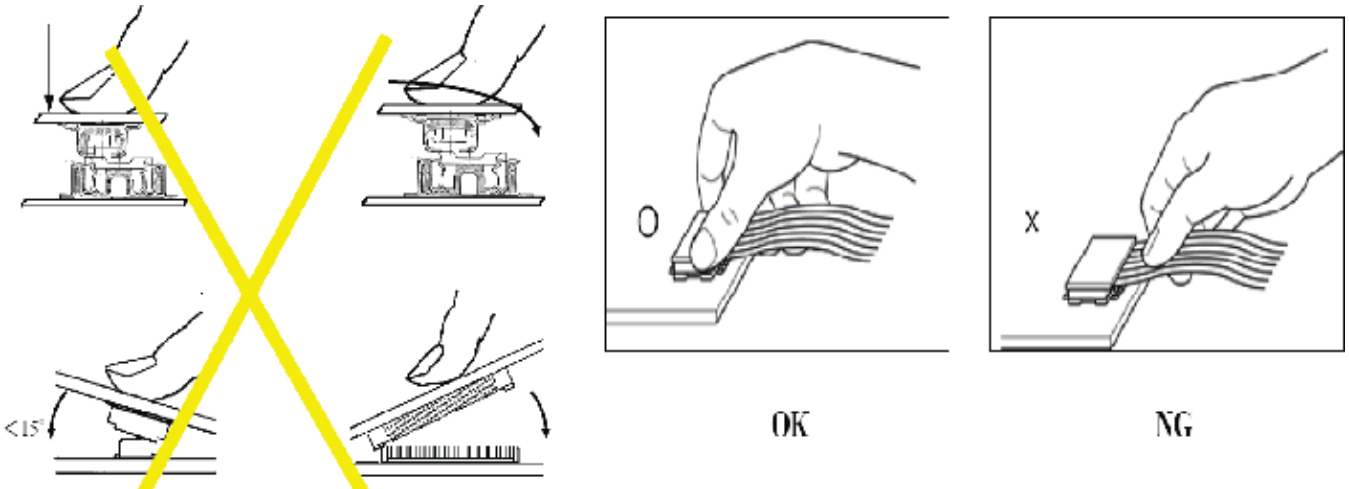
1.1.1 Cover the surface with a transparent protective plate to protect the polarizer and LC cell.



1.1.2 When assembling the LCM into other equipment, the spacer to the bit between the LCM and the fitting plate should have enough height to avoid causing stress to the module surface, refer to the individual specifications for measurements. The measurement tolerance should be $\pm 0.1\text{mm}$.

2. Precaution For Assemble The Module With BTB Connector

Please note the position of the male and female connector position, don't assemble or assemble like the method which the following picture shows.



◆ Precaution For Soldering To The LCM

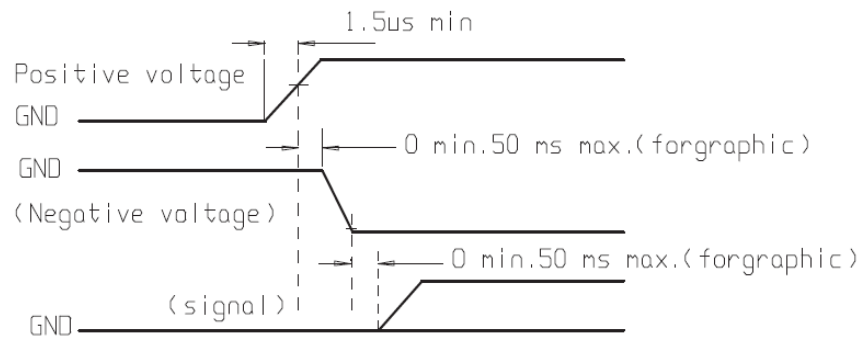
	Hand Soldering	Machine Drag Soldering	Machine Press Soldering
No ROHS Product	290°C ~ 350°C. Time: 3~5S.	330°C ± 350°C. Speed: 4~8mm/s.	300°C ± 330°C. Time: 3~6S. Press: 0.8~1.2Mpa
ROHS Product	340°C ~ 370°C. Time: 3~5S.	350°C ± 370°C. Speed: 4~8mm/s.	330°C ± 360°C. Time: 3~6S. Press: 0.8~1.2Mpa

1. If soldering flux is used, be sure to remove any remaining flux after finishing to soldering operation. (This does not apply in the case of a non-halogen type of flux.) It is recommended that you protect the LCD surface with a cover during soldering to prevent any damage due to flux spatters.
2. When soldering the electroluminescent panel and PC board, the panel and board should not be detached more than three times. This maximum number is determined by the temperature and time conditions mentioned above, though there may be some variance depending on the temperature of the soldering iron.
3. When remove the electroluminescent panel from the PC board, be sure the solder has completely melted, the soldered pad on the PC board could be damaged.

◆ Precaution For Operation

1. Viewing angle varies with the change of liquid crystal driving voltage (VLCD). Adjust VLCD to show the best contrast.
2. It is an indispensable condition to drive LCD's within the specified voltage limit since the higher voltage then the limit cause the shorter LCD life. An electrochemical reaction due to direct current causes LCD's undesirable deterioration, so that the use of direct current drive should be avoided.
3. Response time will be extremely delayed at lower temperature than the operating temperature range and on the mean malfunction or out of order with LCD's. Which will come back in the specified operating temperature.
4. If the display area is pushed hard during operation, the display will become abnormal. However, it will return to normal if it is turned off and then back on.
5. A slight dew depositing on terminals is a cause for electro-chemical reaction resulting in terminal open circuit. Usage under the maximum operating temperature, 50%RH or less is required.
6. Input each signal after the positive/negative voltage becomes stable.

7. Please keep the temperature within specified range for use and storage. Polarization degradation, bubble generation or polarizer peel-off may occur with high temperature and high humidity.



◆ Safety

1. It is recommended to crush damaged or unnecessary LCDs into pieces and wash them off with solvents such as acetone and ethanol, which should later be burned.
2. If any liquid leaks out of a damaged glass cell and comes in contact with the hands, wash off thoroughly with soap and water.

◆ Limited Warranty

Unless agreed between Multi-Inno and customer, Multi-Inno will replace or repair any of its LCD modules which are found to be functionally defective when inspected in accordance with Multi-Inno LCD acceptance standards (copies available upon request) for a period of one year from date of production. Cosmetic/visual defects must be returned to Multi-Inno within 90 days of shipment. Confirmation of such date shall be based on data code on product. The warranty liability is limited to repair and/or replacement on the terms set forth above. Multi-Inno will not be responsible for any subsequent or consequential events.

◆ Return LCM Under Warranty

No warranty can be granted if the precautions stated above have been disregarded. The typical examples of violations are:

- Broken LCD glass.
- PCB eyelet is damaged or modified.
- PCB conductors damaged.
- Circuit modified in any way, including addition of components.
- PCB tampered with by grinding, engraving or painting varnish.
- Soldering to or modifying the bezel in any manner.

Module repairs will be invoiced to the customer upon mutual agreement. Modules must be returned with sufficient description of the failures or defects. Any connectors or cable installed by the customer must be removed completely without damaging the PCB eyelet, conductors and terminals.

■ PRIOR CONSULT MATTER

1. For Multi-Inno standard products, we keep the right to change material, process ... for improving the product property without notice on our customer.
2. For OEM products, if any change needed which may affect the product property, we will consult with our customer in advance.
3. If you have special requirement about reliability condition, please let us know before you start the test on our samples.