

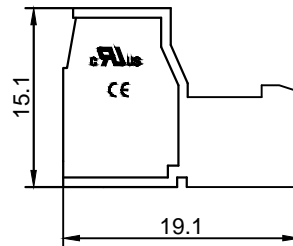
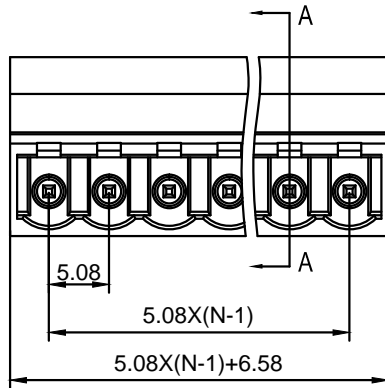
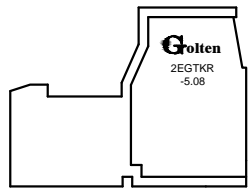
Material :

- (a) Housing : PA66(UL94V-0)
- (b) Cover : PA66(UL94V-0)
- (c) Screws : Steel , Cr³⁺Zn Plated
- (d) Contact : Brass , Tin Plated
- (e) Cage : Brass , Ni Plated

Electrical :

- 1.Rated Voltage : 300V UL IEC 320V
- 2.Rated Current : 15A 20A
- 3.Torque Value : M2.5 , 3.54Lb.in M2.5 , 0.4N.m
- 4.Wire Range: 28-12AWG 2.5mm²
- 5.Stripping Length : 7-8mm
- 6.Withstanding Voltage : AC1600V/1Min.
- 7.Operating Temperature : -40 °C~+105 °C
- 8.RoHS Compliance
- 9.Safety Approval :
- 10.Undimensioned Tolerances:

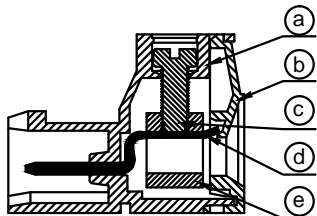
Pitch Range In mm			Nominal Dimension Range In mm					—	∩	∇
≤6	6 ~ 10	10 ~ 24	≤30	30 ~ 60	60 ~ 100	100 ~ 150	>150	0.05/10		
±0.10	±0.15	±0.25	±0.20	±0.30	±0.50	±0.70	±1.00	±0.1°		



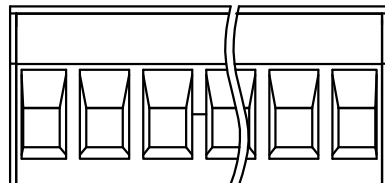
2EGTKR - 5.08 -XXP - X X - XX AH

① ② ③ ④ ⑤ ⑥ ⑦

- ① Series No.
- ② Pitch
- ③ Poles
02 02Contacts
03 03Contacts
...
24 24Contacts
- ④ 1 Single Pitch
2 Double Pitch
- ⑤ Color: 1 Grey
2 Blue
3 Black
4 Green(Standard For AH)
5 Orange
6 Red
7 Transparent
8 Yellow
9 White
- ⑥ Customer Request: 00--Standard M2.5
- ⑦ AH--Standard(PA66)



A-A



DETACHED LISTS	Golten 宁波冠泰电子有限公司 NINGBO GOLTEN ELECTRONICS CO., LTD.													
	APPD: MA_9/3/16 '	PART NO. 2EGTKR-5.08-XXP-XX-00AH												
	CHKD: Yu_9/2/16 '													
	DRFT: Chen_9/1/16 '													
 THIRD ANGLE PROJECTION		<table border="1"> <tr> <td>DRAWING NO.</td> <td>REV</td> <td>1</td> </tr> <tr> <td></td> <td>SHEET</td> <td>1/1</td> </tr> <tr> <td>MM (INCH)</td> <td>DO NOT SCALE DRAWING</td> <td>SCALE</td> </tr> <tr> <td></td> <td></td> <td>1/1</td> </tr> </table>	DRAWING NO.	REV	1		SHEET	1/1	MM (INCH)	DO NOT SCALE DRAWING	SCALE			1/1
DRAWING NO.	REV	1												
	SHEET	1/1												
MM (INCH)	DO NOT SCALE DRAWING	SCALE												
		1/1												