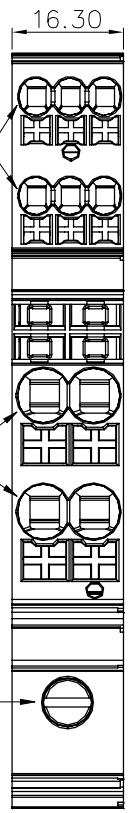


REVISION RECORD

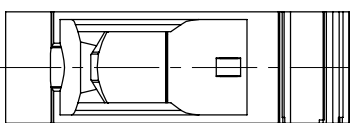
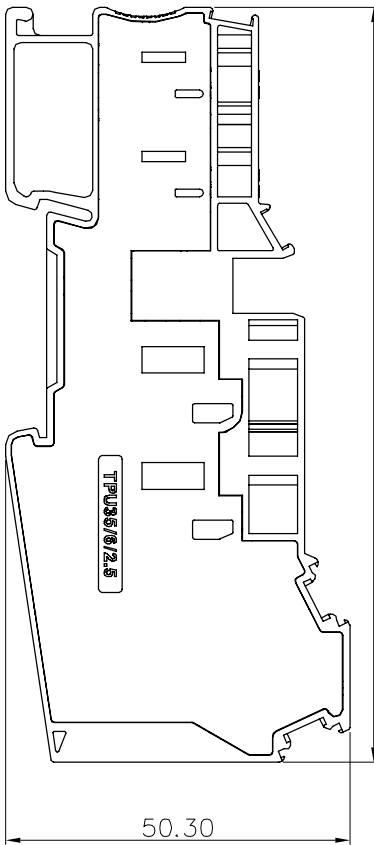
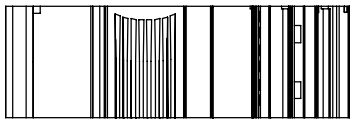
REV	ECN	DESCRIPTION	DRAFT	DATE



C:6 in-line self-locking wiring positions, 2.5mm<sup>2</sup>

B:4 in-line self-locking wiring positions, 6mm<sup>2</sup>

A:Screw connection, 35mm<sup>2</sup>



Transmittal, reproduction, dissemination and/or editing of this document as well as utilization of its contents and communication thereof to others without express authorization are prohibited.

未经允许禁止传输、复制、编辑该文档，以及利用其内容进行交流



A: Screw connection:

- Rated torque: M6, 2.2.15Lb.in
- Conductor cross section: 16~1/0AWG
- Stripping length: 18mm

B: In line connection

- Conductor cross section: 20~8AWG
- Stripping length: 12mm

C: In line connection

- Conductor cross section: 26~12AWG
- Stripping length: 8~10mm

General information:

- Dimension shall be interpreted per ASME Y14.5-2009
- Operating temperature: -40°C~+105°C
- RoHS Compliance
- Undimensioned Tolerances:

Pitch	Range in mm	Nominal Dimension	Range in mm	Tolerance				
Over	10	10	100	0.1/70				
10	10	30	60	100	150			
6	10	24	30	60	100	150		
±0.15	±0.20	±0.30	±0.30	±0.50	±0.70	±1.00	±1.30	±2*

Material:

Insulator	PA66	UL94 V-0
Cage	STEEL	Zn Plated
Screw(M6)	STEEL	Zn Plated
Conductor	Copper alloy	Sn Plated
Spring	Stainless steel	
Button	PA66	UL94 V-0

IEC Standard

Surge voltage category	III
Evolution degree	3
Rated surge voltage(kV)	8

A: Screw connection:

- Rated torque: M6, 2.5N.m
- Rated voltage/Rated current: 1000V/105A
- Conductor cross section:

Solid	1.5-50mm <sup>2</sup>
Stranded with ferrules without plastic sleeve	1.5-50mm <sup>2</sup>
Stranded with ferrules with plastic sleeve	1.5-35mm <sup>2</sup>

B: In line connection

- Rated voltage/Rated current: 1000V/41A
- Conductor cross section:

Solid	0.5-10mm <sup>2</sup>
Stranded with ferrules without plastic sleeve	0.5-6mm <sup>2</sup>
Stranded with ferrules with plastic sleeve	0.5-6mm <sup>2</sup>

C: In line connection

- Rated voltage/Rated current: 1000V/24A
- Conductor cross section:

Solid	0.2-4mm <sup>2</sup>
Stranded with ferrules without plastic sleeve	0.2-2.5mm <sup>2</sup>
Stranded with ferrules with plastic sleeve	0.2-2.5mm <sup>2</sup>

HOW TO ORDER:

TPU35/6/2.5-11-XX

Series No.

COLOR:  
GY: Grey  
BU: Blue  
RD: Red  
BK: Black

订货号 (Order No.)	料号 (Item No.)	颜色 (Color)
TPU35/6/2.5-11-GY	411017001	灰色 (Grey)
TPU35/6/2.5-11-BU	411017002	蓝色 (Blue)
TPU35/6/2.5-11-RD	411017003	红色 (Red)
TPU35/6/2.5-11-BK	411017004	黑色 (Black)

订货号	TPU35/6/2.5-11-XX	名称	TPU35/6/2.5系列35平方毫米带压接螺钉带绝缘护套电位分配排端子	未注公差	表面
Order No.	TPU35/6/2.5-11-XX	Name	TPU35/6/2.5系列35平方毫米带压接螺钉带绝缘护套电位分配排端子	Tolerance	Surface
项目	签字	图号	PRM002784	版本号	VDI21
Item	Signature	Drawing No.	PRM002784	Revision Number	Weight
设计	LZT	日期	12/24/21*	物料号	1:1
Design	LZT	Date	12/24/21*	Item No.	Scale
审核	XJ	图号	PRM002784	Notes	mm
Check	XJ	Material	Notes	第1页/共1页 1 of 1	
工艺	-	材料	Notes		
Process	-	Material	Notes		
标准化	-	物料号	Notes		
Unity	-	Item No.	Notes		
批准	LWL	物料号	Notes		
Approve	LWL	Item No.	Notes		
		物料号	Notes		
		Item No.	Notes		

NINGBO SUPU ELECTRONICS CO.,LTD.

1

2

3

4

5

6

7

8