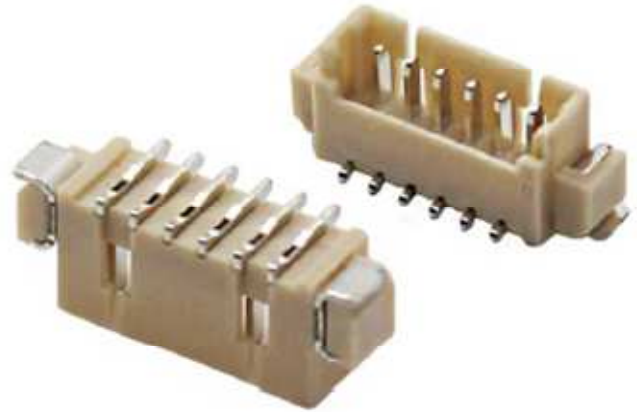


Electrical Specification:

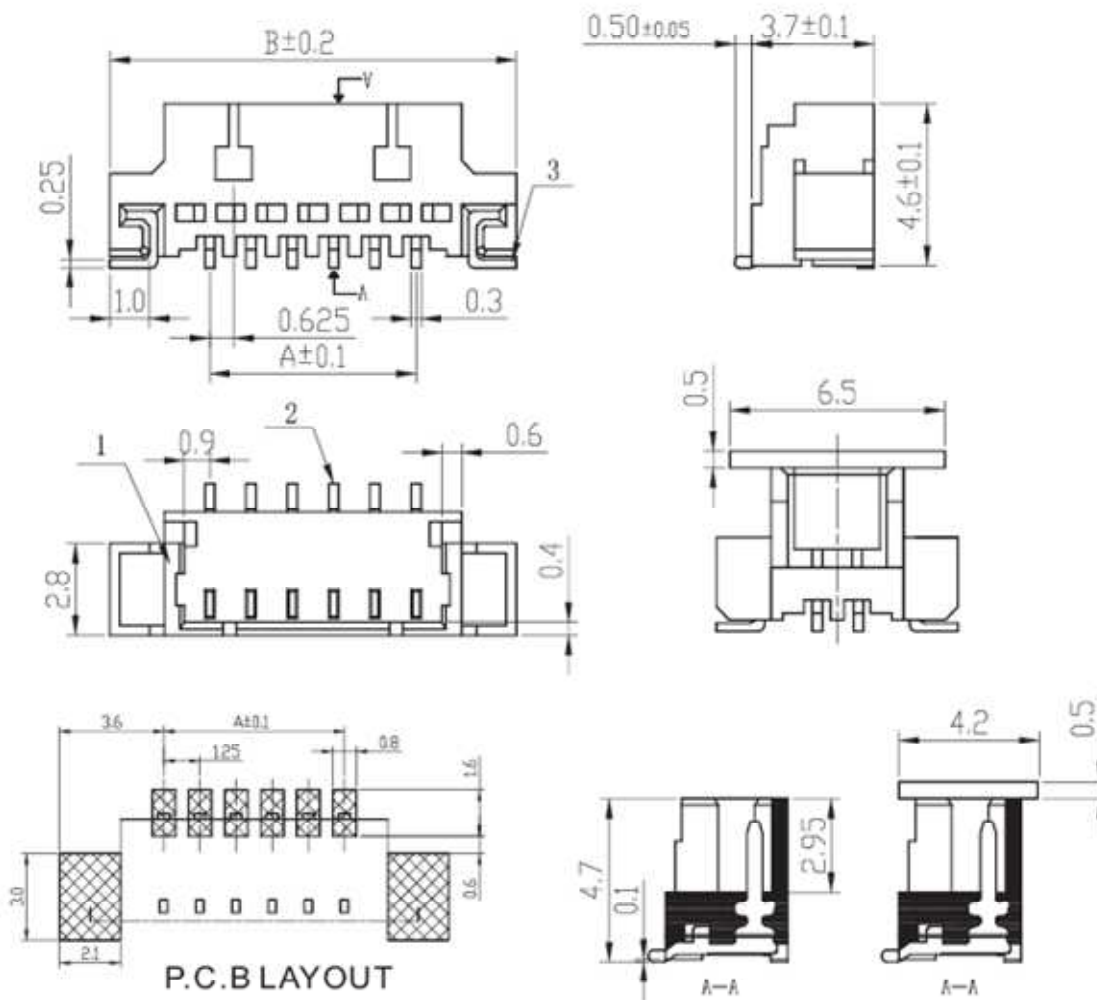
Rated Voltage: 50V AC/DC
 Rated Current: 1.0A
 Contact Resistance: 0.02 Ohm max
 Insulation Resistance: 500M Ohm min
 Withstand voltage: 500V AC/MIN
 Temperature range for usage : -25°C~+85°C

Material:

Housing: LCP UL94V-0
 Contacts: Phosphor bronze, tin-plated
 Plating: Tin 50u" over 100u" nickel



Vertical SMT



Poles	A	B
2	1.25	7.30
3	2.50	8.55
4	3.75	9.80
5	5.00	11.05
6	6.25	12.30
7	7.50	13.55
8	8.75	14.80
9	10.00	16.05
10	11.25	17.30
11	12.50	18.55
12	13.75	19.80
13	15.00	21.05
14	16.25	22.30
15	17.50	23.55
16	18.75	24.80