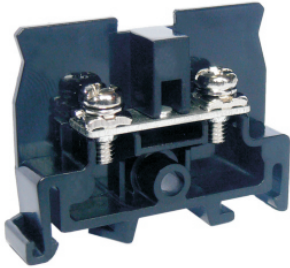


Barrier screw terminal block-UTD-15-391002







Barrier screw terminal block , rated voltage:660V , Max. operating current:20A, connection method : screw connection , number of connections : 2 , crimping range : 0.75mm² -2.0mm² , AWG : 18-14 , thickness:8mm , height:29mm , color : Black , mounting type : TH35-7.5、 TH35-15、 G32-15、 G32-18

Product parameter

Parameter	Data
Packing unit (PCS)	/
NW per piece(g)	/
Layers	1
Number of connections	2
Rated cross section(mm ²)	2
Color	black
Insulation material	PA
Flame retardant grade (UL94)	V0
Rated voltage(V)	660
Rated current(A)	20
Temperature of insulation material	-40 ~ +125
Wire feed	Terminal side

Product certification

Parameter	Data
Certification logo	
Certification logo	
Certification logo	

Parameter	Data
	
Certification logo	

Technical data

Parameter	Data
Connection Method	Screw connection
Screw thread	M3.5 × 8
Stripping length(mm)	/
Tightening torque	1.0-1.3
Solid conductors(mm ²)	0.75-2.0
Solid conductors AWG	18-14
Stranded conductors(mm ²)	0.75-2.0
Stranded conductors AWG	18-14
Operating temperature ()	-40 ~ +105
Ambient temperature (storage/transportation) ()	-25 ~ +60
Relative humidity	30% ~ 90%
Connection in acc. with standard	IEC 60947-7-1

Dimension

Parameter	Data
Width(mm)	40
Thickness(mm)	8
Height(mm)	29