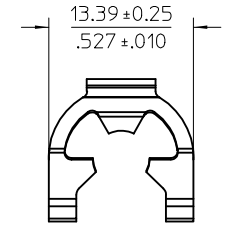
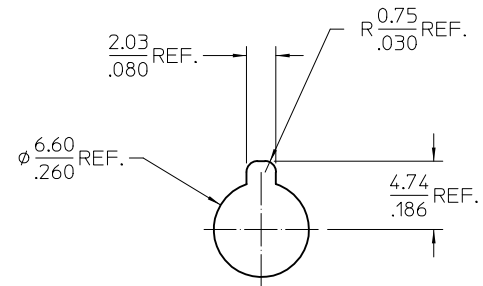
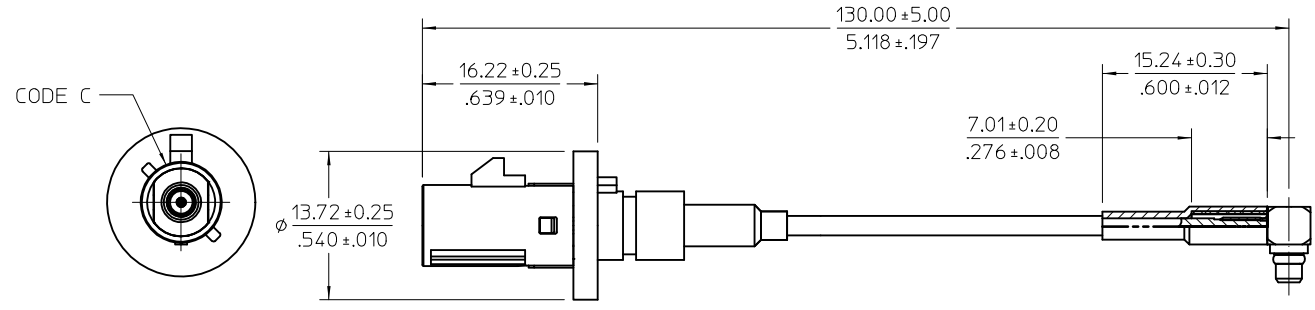
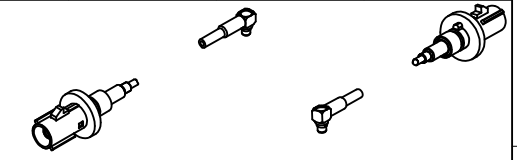


MATERIALS AND FINISHS

- J FAKRA JACK
- BODY ZINC ALLOY  
PLATED NICKEL
- I CENTER CONTACT BRASS  
PLATED GOLD
- H INSULATOR TEFLON
- G RETAINING RING CARBON SPRING STEEL  
PLATED NICKEL
- F SHROUD HIGH TEMPERATURE PLASTIC  
COLOR BLUE
- E MMCX PLUG R/A
- D BODY, CRIMP TUBE BRASS  
PLATED GOLD
- C CENTER CONTACT BRASS  
PLATED GOLD
- B SNAP RING BRASS  
PLATED GOLD
- A CABLE RG178
- SHRINK TUBE  
ATUM 4/1-0
- PACKAGING BY POLY BAG



PRE-RELEASE  
 REFERENCE  
 USE ONLY

RECOMMENDED PANEL  
THICKNESS 2.5MM

PART # 89762-5890A

B		2014/05/09	DESCRIPTION	QUALITY SYMBOLS	GENERAL TOLERANCES (UNLESS SPECIFIED)		DIMENSION STYLE		SCALE	DESIGN UNITS	THIRD ANGLE PROJECTION	
					mm	INCH	MM/IN		METRIC	<input checked="" type="checkbox"/> THIRD ANGLE <input type="checkbox"/> FIRST ANGLE		
A	1	REV	EC NO: DRAWN IN CHKD: APPR:	1	4 PLACES	± ---	± ---	DRAWN BY	DATE	TITLE <b>CA SMB JACK FAKRA TO                  MMCX PLUG R/A RG178 CABL                  CA-FAKRA-J/MMCX-P</b>		
					3 PLACES	± ---	± ---	ELIN	2014/05/09			
					2 PLACES	± ---	± ---	CHECKED BY	DATE	<b>molex</b>		
					1 PLACE	± ---	± ---	KERR IE	2014/05/09			
					0 PLACE	± ---	± ---	APPROVED BY	DATE	DOCUMENT NO. <b>SD-89762-589A</b>		
					ANGULAR ± 2 °		MATERIAL NO.		DOCUMENT NO.			
					DRAFT WHERE APPLICABLE MUST REMAIN WITHIN DIMENSIONS		897625890A		SD-89762-589A		1 OF 1	
					SIZE C THIS DRAWING CONTAINS INFORMATION THAT IS PROPRIETARY TO MOLEX INCORPORATED AND SHOULD NOT BE USED WITHOUT WRITTEN PERMISSION							