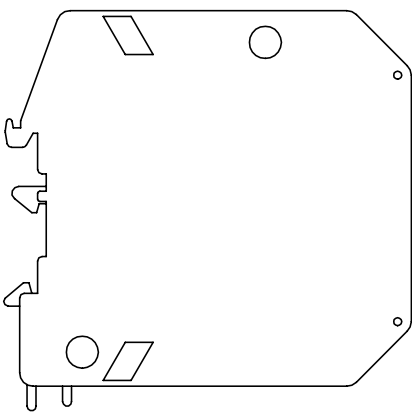
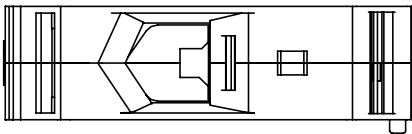
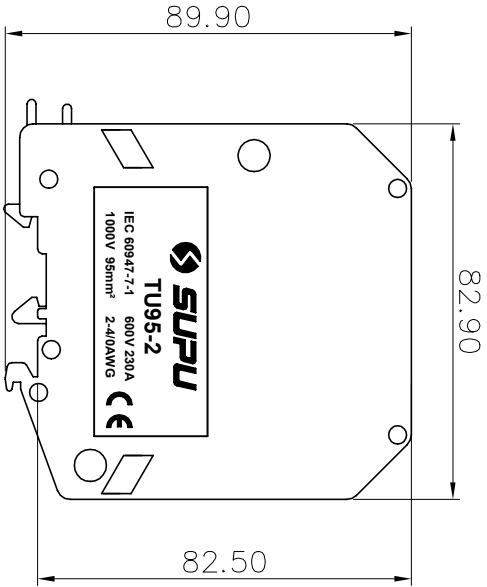
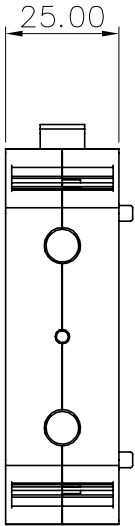


REVISION RECORD			
REV	ECN	DESCRIPTION	DATE



Connection method:  
 1.For solid wire, peeling wire in right length, fix in by rated torque force.  
 2.For stranded wire,connect directly after peeling in right length,or ferruled on wire and fix in by rated torque force.  
 (Attention: torque force should be equable, no explosive power.)

Transmittal, reproduction, dissemination and/or editing of this document as well as utilization of its contents and communication thereof to others without express authorization are prohibited.

未经允许禁止传输、复制、编辑该文档，以及利用其内容进行交流

NOTES:

- UL/CUL Standard  
 1.Conductor cross section : 2~4/0AWG  
 2.Rated torque : M8 , 159.3 Lb.in  
 3.Rated Voltage/Current :

Use group	B	C	D
Rated voltage(V)	600	600	600
Rated current(A)	230	230	230

IEC Standard

- 1.Conductor cross section :  
 Wire range(Solid/Stranded) 25-95mm<sup>2</sup>  
 Solid 25-95mm<sup>2</sup>  
 Stranded with ferrules 35-95mm<sup>2</sup>  
 without plastic sleeve 25-95mm<sup>2</sup>  
 Stranded with ferrules with plastic sleeve 25-95mm<sup>2</sup>

2.Rated torque : M8 , 15-18N • m

3.Rated Voltage/Current :

Surge voltage category	III
Pollution degree	3
Rated surge voltage(KV)	8
Rated voltage(V)	1000
Rated current(A)	232

Material:

Insulator	PA66	UL94 V-0
Cage	Steel	Zn plated
Conductor	Copper alloy	Sn plated
Screw	Steel	Zn plated

General information:

- 1.Dimension shall be interpreted per ASME Y14.5-2009  
 2.Stripping length : 35mm  
 3.Operating temperature: -40°C~+105°C  
 4.RoHS Compliance  
 5.Undimensioned Tolerances:

Pitch Range	mm	mm	mm	mm	mm	mm	mm	mm	mm
Over	6	10	15	20	25	30	35	40	45
To	10	15	20	25	30	35	40	45	50
Over	±0.15	±0.20	±0.30	±0.30	±0.50	±0.50	±0.70	±1.00	±1.30
To	±0.15	±0.20	±0.30	±0.30	±0.50	±0.50	±0.70	±1.00	±1.30

HOW TO ORDER:

TU95-2-XX

Sereies No.  
 Color:  
 GY: Grey  
 BU: Blue  
 OG: Orange

订货号	TU95-2-XX	名称	TU系列95mm <sup>2</sup> 铁螺钉一进一出接线端子	公差	未注公差
项目	签字	图号	PRM002843	版本号	Revision Number
设计	ZTC	材料	Notes	重量	Weight
审核	DF	日期	2021.05.25	比例	Scale
工艺	-	图号	2021.05.25	表面	Surface
标准化	-	物料号	*	比例	Scale
批准	LWL	物料号	*	表面	Surface
批准	LWL	物料号	*	比例	Scale
批准	LWL	物料号	*	表面	Surface
批准	LWL	物料号	*	比例	Scale
批准	LWL	物料号	*	表面	Surface
批准	LWL	物料号	*	比例	Scale

NINGBO SUPU ELECTRONICS CO.,LTD.