

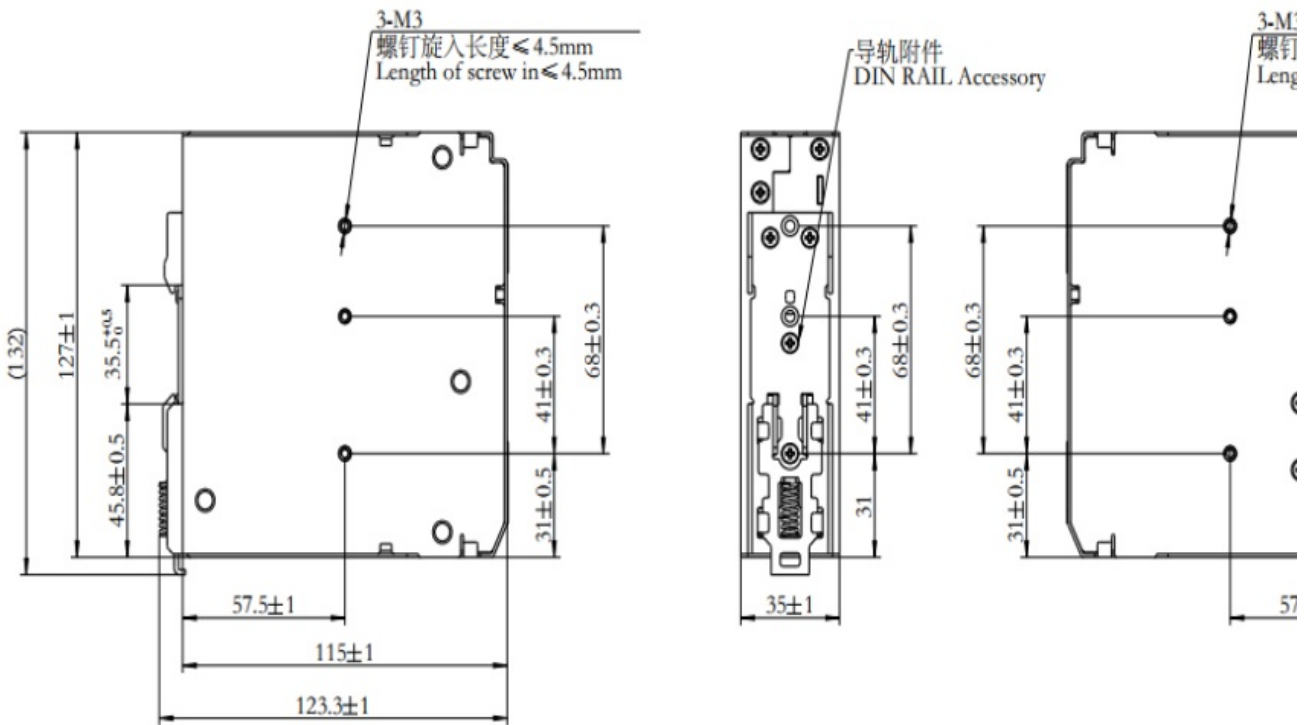


Category: 导轨电源/Plug-in terminal-plug

Product name: SDP2-1AC24-120

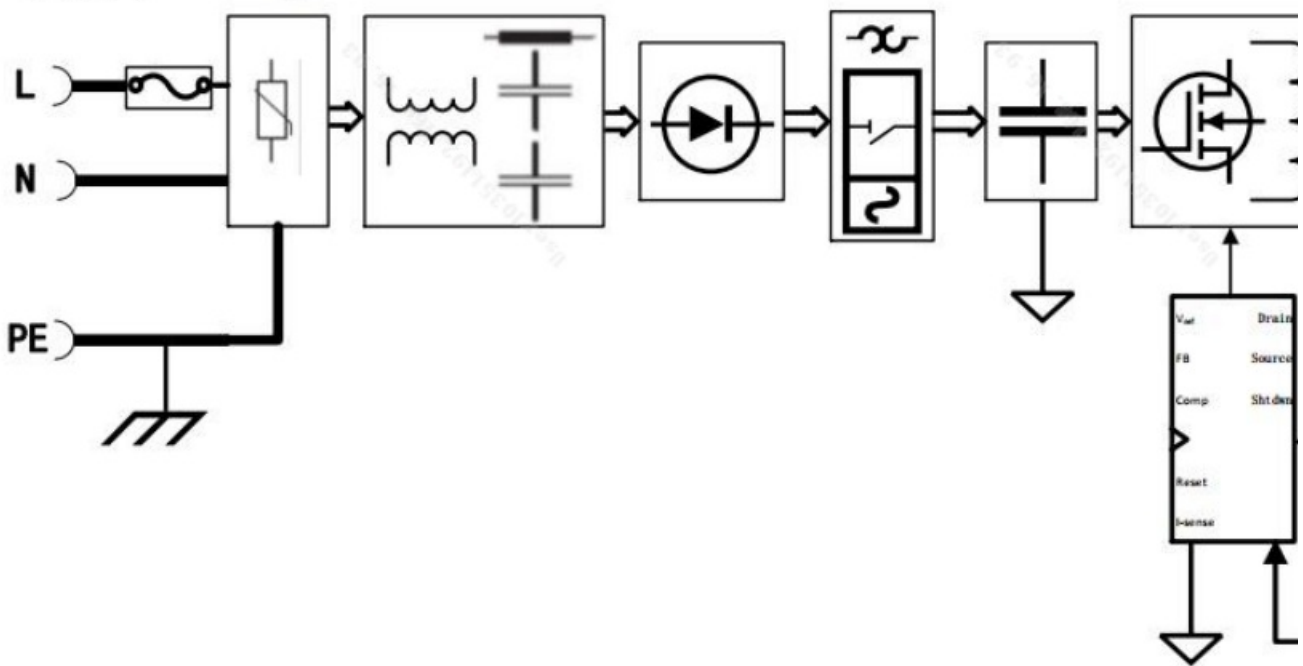
Product Description: 24VDC , 5A

Product Picture



导轨电源SDP2-1AC24-120结构图

框架图Block diagram



导轨电源SDP2-1AC24-120电气图

基本信息 /Basic Information

产品型号 SUPU ID	SDP2-1AC24-120
接线端子 Connection terminal	直插式 (Push-in spring)
防护等级 Protection Level	IP20
工作温度 Work temperature	-40~+70°C
安装方式 Mounting	TS35导轨安装 (35mm DIN)
DC OK DC OK	LED指示灯+继电器报警 (LED indicating lamp + Relay remote alarm)
尺寸(mm) Dimensions	127 * 115 * 35mm

IEC数据 /IEC Data

额定电流 Rated Current	5A
额定电压 Rated Voltage	24V DC
额定输入 Rated Input	85 ~ 264VAC

效率 Efficiency	88%
纹波噪声 Ripple noise	150mVp-p
输入频率 Input frequency	47 ~ 63Hz
峰值带载能力 Peak load capacity	150%
耐压 Withstand voltage	I/P-O/P 3000Vac. I/P-PE 1500Vac. O/P-PE 700VDC.
工作海拔 Work altitude	3000米以上降额使用，最高海拔5000米 Derating above 3000 meters derated use, the highest altitude of 5000 meters)

包装信息 /Packaging information

包装单位 Packing unit	Pcs
最小订货量 Minimum order quantity	1
原产地 Country of origin	CN

Ningbo Supu Electronics Co.,Ltd

Zip code: 315303

Fax: +86 574-63288170

E-mail : askme@supu.cn

Address: No. 625, Kandun Town Street, Cixi
City, Zhejiang Province

Switchboard: +86 574-63288158

E-mail : askme@supu.cn

Service Hotline: 400-626-6336



Code