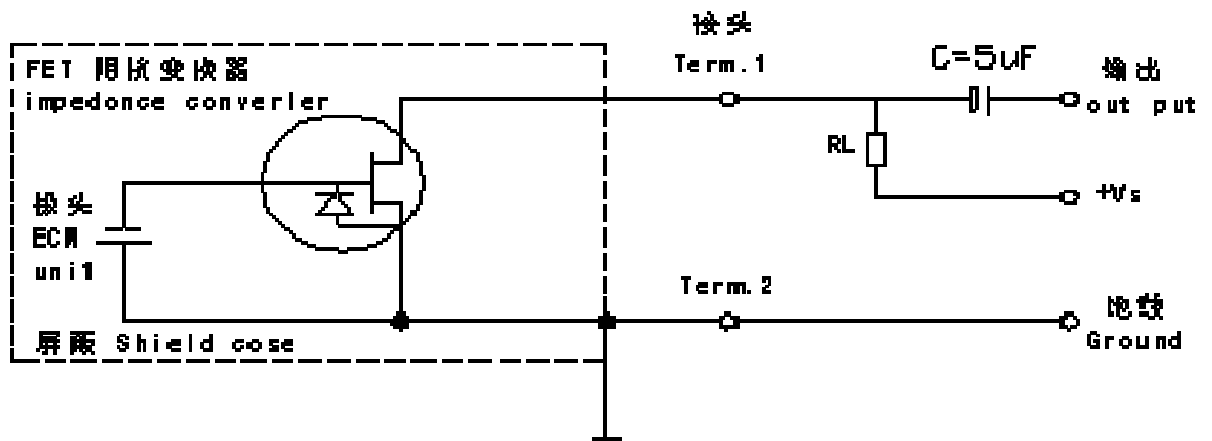




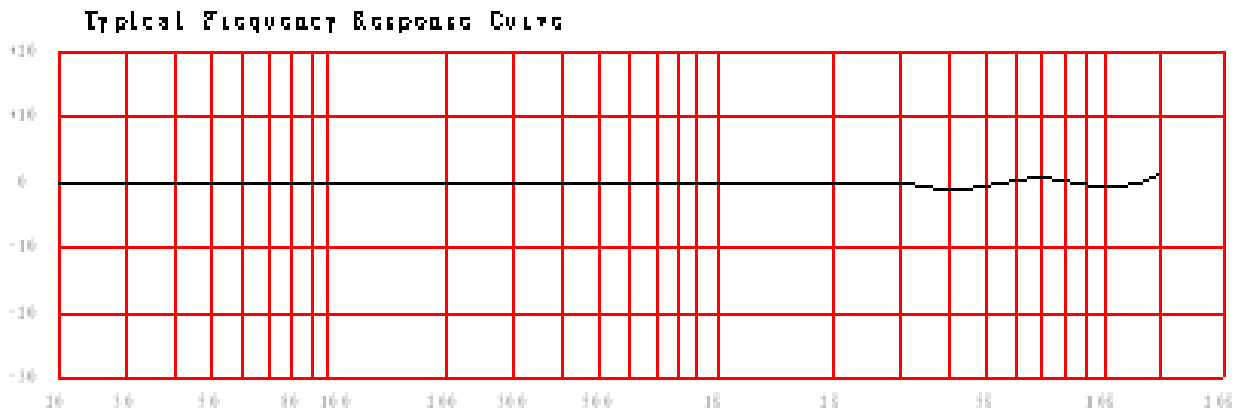
EM-9767

Schematic Diagram $V_s=4.5V$, $R_L=2.2K\Omega$



Frequency Response

Frequency Response



Sensitivity: 1KHz,0dB=1V/Pa

$-46 \pm 2\text{dB}$	$-44 \pm 2\text{dB}$	$-42 \pm 2\text{dB}$
$-40 \pm 2\text{dB}$	$-38 \pm 2\text{dB}$	$-36 \pm 2\text{dB}$
$-34 \pm 2\text{dB}$	$-32 \pm 2\text{dB}$	$-30 \pm 2\text{dB}$

Specifications

Impedance:	Less than 2.2K Ω
Directivity:	Omnidirectional
Frequency:	20-16,000Hz
Standard operation voltage:	4.5V
Current consumption:	Max 0.5mA
Sensitivity reduction:	Within 3dB at 1.5V
S/N ratio:	More than 60dB

Dimensional (mm)

