

Data sheet

Commercial Art.No.: 73.351.0635.1

Hood BAS GOT GH 6HM20 A1

Hood revos basic made of aluminum, for single locking lever with threaded hole M20 on the front, high version, 6-poles



| | |
|--------------------|---------------|
| Commercial Art.No. | 73.351.0635.1 |
| EAN | 4049088220081 |
| Order Unit | 1 |

Technical data

General

| | |
|--|---------------------|
| Housing material | aluminum |
| Color | Grey |
| Surface | With powder coating |
| UV resistant | yes |
| Inflammability class of insulation material acc. with UL94 | Other |
| Operating temperature range min. | -40 °C |
| Operating temperature range max. | 120 °C |

Model

| | |
|------------------------|----------------------|
| Construction | 6H |
| Locking mechanism | Single locking lever |
| Cable entry | Front side |
| Type of cable | Thread |
| With cable screw gland | No |
| Thread size M | 20 |
| Thread size PG | |
| Hinged lid | No |
| EMC-version | No |
| Length | 74 mm |
| Width | 43 mm |
| Height | 70 mm |

Classification

| | |
|-----------|--|
| ECLASS 11 | |
|-----------|--|

| | |
|------------|----------|
| ECLASS 8.1 | 27440202 |
| ETIM 7.0 | EC000437 |
| ETIM 6.0 | EC000437 |
| ETIM 5.0 | EC000437 |
| ETIM 4.0 | EC000437 |
| ETIM 3.0 | EC000437 |

Product compliance

| | |
|------------------------------|-----------|
| REACH-SVHC conformity status | Compliant |
|------------------------------|-----------|

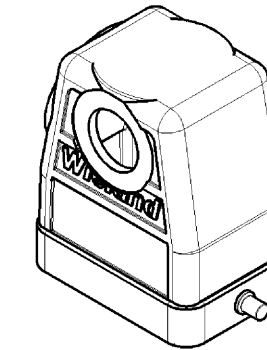
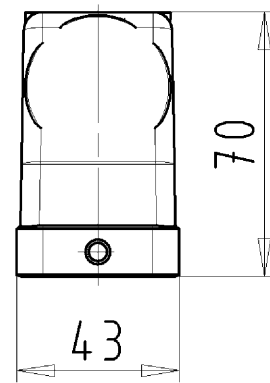
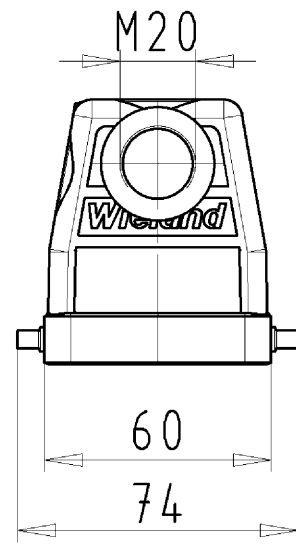
Fits with

| Commercial Art.No.: | Article-type description: | Description: |
|---------------------|-----------------------------------|--|
| 70.300.0602.0 | Female insert BAS BUS 6 2,5 50 AG | Female insert revos basic, 6-poles, rated current: 16A, rated voltage: 500V, with silver-plated contacts |
| 70.300.0640.0 | Female insert BAS BUS 6 2,5 50 | Female insert revos basic, 6-poles, rated current: 16A, rated voltage: 500V, with tin-plated contacts |
| 70.301.0640.0 | Female insert BAS BUS 6 2,5 50 AU | Female insert revos basic, 6-poles, rated current: 16A, rated voltage: 500V, with gold-plated contacts |
| 70.302.0640.0 | Female insert BAS BUS OD 6 2,5 50 | Female insert revos basic, 6-poles, rated current: 16A, rated voltage: 500V, with tin-plated contacts |
| 70.310.0602.0 | Male insert BAS BUS OD 6 2,5 50 | Female insert revos basic, 6-poles, rated current: 16A, rated voltage: 500V, with tin-plated contacts |
| 70.310.0640.0 | Male insert BAS STS 6 2,5 50 | Male insert revos basic, 6-poles, rated current: 16A, rated voltage: 500V, with tin-plated contacts |
| 70.311.0640.0 | Male insert BAS STS 6 2,5 50 AU | Male insert revos basic, 6-poles, rated current: 16A, rated voltage: 500V, with gold-plated contacts |
| 70.312.0640.0 | Male insert BAS STS OD 6 2,5 50 | Male insert revos basic, 6-poles, rated current: 16A, rated voltage: 500V, with tin-plated contacts |
| 70.500.0653.0 | Female insert BAS BUF 6 2,5 50 | Female insert revos basic, 6-poles, rated current: 16A, rated voltage: 500V, with silver-plated contacts |
| 70.510.0653.0 | Male insert BAS STF 6 2,5 50 | Male insert revos basic, 6-poles, rated current: 16A, rated voltage: 500V, with tin-plated contacts |
| 70.502.0653.0 | Female insert BAS BUM 6 2,5 50 AG | Female insert revos basic, 6-poles, rated current: 16A, rated voltage: 500V, with silver-plated contacts |
| 70.512.0653.0 | Male insert BAS STM 6 2,5 50 AG | Male insert revos basic, 6-poles, rated current: 16A, rated voltage: 500V, with silver-plated contacts |
| 70.700.0658.0 | Female insert BAS BUC 6 50 | Female insert revos basic, 6-poles, rated current: 16A, rated voltage: 500V, with tin-plated contacts |
| 70.710.0658.0 | Male insert BAS STC 6 50 | Male insert revos basic, 6-poles, rated current: 16A, rated voltage: 500V, with tin-plated contacts |
| 72.300.0653.0 | Female insert BAS BUS 6 2,5 69 | Female insert revos basic, 6-poles, rated current: 16A, rated voltage: 690V, with tin-plated contacts |
| 72.310.0653.0 | Male insert BAS STS 6 2,5 69 | Male insert revos basic, 6-poles, rated current: 16A, rated voltage: 690V, with tin-plated contacts |
| 72.700.0658.0 | Female insert BAS BUC 6 69 | Female insert revos basic, 6-poles, rated current: 16A, rated voltage: 690V, with tin-plated contacts |
| 72.710.0658.0 | Male insert BAS STC 6 69 | Male insert revos basic, 6-poles, rated current: 16A, rated voltage: 690V, with tin-plated contacts |
| 73.800.2453.0 | Female insert DD BUC 24 1,5 25 | revos DD 24 pole + ground, female insert 250V/10A, crimp connection |
| 73.810.2453.0 | Male insert DD STC 24 1,5 25 | revos DD 24 pole + ground, male insert 250V/10A, crimp connection |
| 70.405.0653.0 | Female insert BAS BUP 6 2,5 50 AG | Female insert revos basic, 6-poles, rated current: 16A, rated voltage: 500V, with silver-plated contacts |

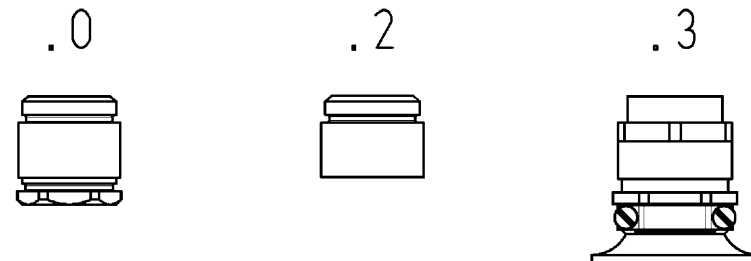
| | | |
|---------------|---------------------------------|--|
| 70.415.0653.0 | Male insert BAS STP 6 2,5 50 AG | Male insert revos basic, 6-poles, rated current: 16A, rated voltage: 500V, with silver-plated contacts |
| 70.810.1056.0 | Male insert BAS STCK 10 50 PC | Male insert revos basic, 10-poles, polycarbonate insert, rated current: 16A, rated voltage: 500V, with gold-plated or silver-plated contacts |

These dimensions will be especially checked at delivery
 Only inspection dimensions
 With /E marked dimensions are only valid for internal use

Diese Maße werden bei Abnahme besonders geprüft
 Ausschließlich Prüfmaße
 Mit /E gekennzeichnete Maße sind nur für interne Zwecke gültig



Varianten/Variants



| | | | |
|--------------------------------|----------------------|---|----------------------------|
| 73.351.0635.3 | BAS GOT GH 6HM20 A 3 | KV mit Zugentlastung und Knickschutz, IP54 montiert /CG with strain relief and bend support, IP54 ass. | |
| 73.351.0635.2 | BAS GOT GH 6HM20 A 2 | Zwischenstützen montiert /Bushing assembled | |
| 73.351.0635.1 | BAS GOT GH 6HM20 A 1 | Gewindebohrung /Thread hole | X |
| 73.351.0635.0 | BAS GOT GH 6HM20 A 0 | Kabelverschraubung (KV), IP54 montiert /Cable Gland (CG), IP54 assembled | |
| Bestellnummer /Order number | Typ /Type | Varianten /Variants | dar- gestellt /drawn |

Weitere Daten siehe KATALOG oder eKatalog.
 Additional data see CATALOG or eCatalog.
www.wieland-electric.com
eshop.wieland-electric.com

| | | | |
|---|-------------------------------|---|--|
| Tolerierung Size ISO 14405 (E) / Tolerance system Size ISO 14405 (E). (This ISO-standard describes the envelope principle. According to the envelope principle the deviations of form and parallelism are limited by the size tolerances). | | ja/yes <input checked="" type="checkbox"/> Stoffverbots- und Deklarationsliste nach UU-TQM-05/03 ist einzuhalten. Conformity with Wieland document UU-TQM-05/03 (list of prohibited / declarable hazardous substances) to be declared! | |
| Freitoleranz nach General tolerance - - - - - | | CAD - Zeichnung, keine manuellen Änderungen CAD - drawing, no manual modifications allowed | 1. Verwendung: First Use: - - - - - |
| Blatt: 1 von 1 Sheet: of 1 | | Zeichnung Nr./Drawing No. Index | |
| T 73.351.0635.0 13K | | Maße in mm/Dimensions are in mm | |
| Werkstoff/Material Aluminium beschichtet/coated grau/grey | | 2013 gezeichnet drawn 11.07. geprüft checked Normgepr. Stand. check | Name Hoffmann |
| Vol. mm³ / Ofl./Surf. mm² | | Ersatz für/Replacement for: - | |
| wieland Elektrische Verbindungen | | Type revos BASIC hohe Bauf. | Benennung/Titel GEHAEUSEOBERTEIL Baugröße 6H Kabelabgang von vorne M20 hood size 6H cable outlet in front M20 |
| Index | Datum / Blatt Date / Sheet | Änderung/Revision | |

Weitergabe sowie Vervielfältigung dieses Dokuments, Verwertung und Mitteilung seines Inhalts sind verboten, soweit nicht ausdrücklich gestattet.
 The reproduction, distribution and utilization of this document as well as the communication of its contents to others without express authorization is prohibited.

733510635013K_2 CADW3018_Hoffmann 2013-07-15 11:55:37 1:000