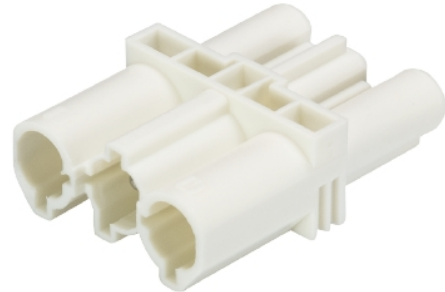


Data sheet

Commercial Art.No.: 92.030.5958.0

Distributor GST18I3Z 1P1 WS

GST18i3 I-distributor, 3 pole, 1 IN, 1 OUT, without mounting option, coding mains 250 V, 20 A, coding color white



Commercial Art.No.	92.030.5958.0
EAN	4015573236813
Order Unit	1

Certificates / Approvals



Technical data

General

Rated current	20 A
Rated voltage	250 V
Rated impulse voltage	4 kV
Pollution degree	2
Mechanical coding	Code 1
Lockable	No
Color of coding/ contact carrier	white
Marking of poles	L, N, PE

Model

Number of inputs	1
Number of outputs	1
Type of fastening	No
Degree of protection (IP)	IP20
Type of distributor	intermediate coupling

Material

Housing material	Polyamide
halogen free	yes
Contact material	CuZn
Fire load	0.039 kWh
Insulation components continuous temperature	100 °C
Surface finish	Tin-plated

Classification

ECLASS 11	
-----------	--

ECLASS 8.1	27440603
ETIM 7.0	EC002567
ETIM 6.0	EC002567
ETIM 5.0	EC002567
ETIM 4.0	EC002567

Dimensions

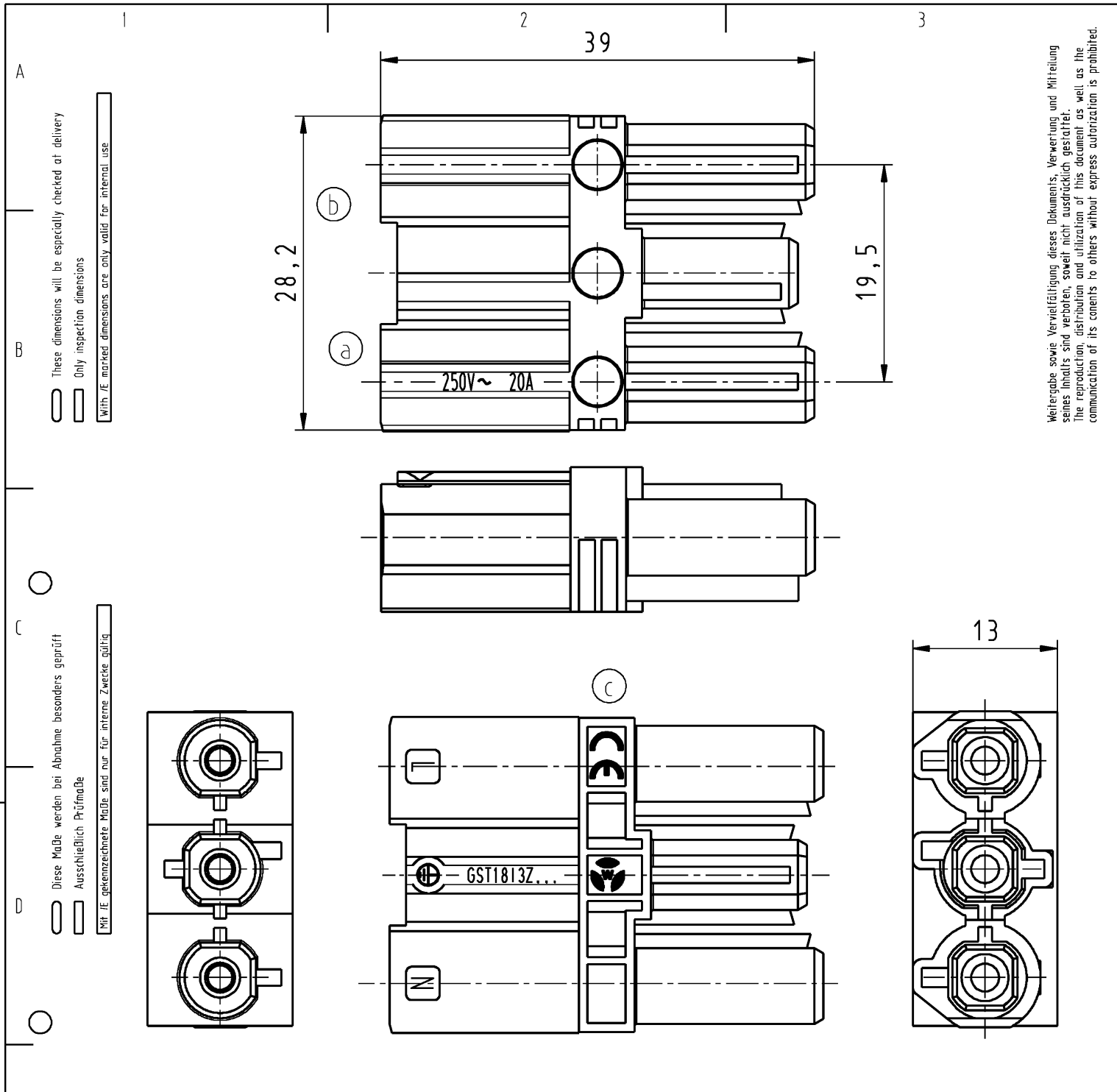
Length	39 mm
Width	28.2 mm
Height	13 mm

Product compliance

ROHS conformity status	Compliant
REACH-SVHC conformity status	Compliant

Accessories

Commercial Art.No.:	Article-type description:	Description:
05.588.5753.0	Lock GST18 VERTEILER WS	Locking device for distributor GST18i3-5, retrofit part, white
05.588.5753.1	Locking slide GST18 VERTEILER SW	Locking device for distributor GST18i3-5, retrofit part, black
05.561.3653.0	cover cap GST18i3VS B WS	Cover piece for female GST18i3, white
05.561.3653.1	cover cap GST18i3VS B SW	Cover piece for female GST18i3, black
05.564.5353.0	cover cap GST18i3/4/5 WS	Cover piece 12 pole black for female parts GST18i3-6
05.564.5353.2	cover cap GST18i3/4/5 SW	Cover piece 12 pole white for female parts GST18i3-6
05.594.4250.0	cover cap ST18/3B + GST18i3 ST WS	
05.594.4253.0	cover cap ST18/3B + GST18i3 ST WS	



Weitergabe sowie Vervielfältigung dieses Dokuments, Verwertung und Mitteilung seines Inhalts sind verboten, soweit nicht ausdrücklich gestattet. Die Reproduktion, Distribution und Utilization of this document as well as the communication of its contents to others without express authorization is prohibited.

A These dimensions will be especially checked at delivery
 Only inspection dimensions
 With IE marked dimensions are only valid for internal use.

C Diese Maße werden bei Abnahme besonders geprüft
 Ausschließlich Prüfmaße
 Mit IE gekennzeichnete Maße sind nur für interne Zwecke gültig.

Teilenummer part number	Typ type	Farbe colour
92.030.5958.0	GST 1813Z 1P1 WS	weiß/white
92.030.5958.1	GST 1813Z 1P1 SW	schwarz/black

Weitere Daten siehe Katalog
 further data see catalog

Tolerierung Size ISO 14405 (E) / Tolerance system Size ISO 14405 (E). (This ISO-standard describes the envelope principle. According to the envelope principle the deviations of form and parallelism are limited by the size tolerances). ja/yes Stoffverbots- und Deklarationsliste nach WN 5020.010 ist einzuhalten. (This ISO-standard describes the envelope principle. According to the envelope principle the deviations of form and parallelism are limited by the size tolerances). Conformity with Wieland document WN 5020.010 e (list of prohibited / declarable hazardous substances) to be declared!

Freitoleranz nach General tolerance CAD - Zeichnung, keine manuellen Änderungen CAD - drawing, no manual modifications allowed 1. Verwendung: First Use: Blatt: 1 von 1 Sheet: 1 of 1

Maßstab / Scale 2:1	Werkstoff / Material	Tag/Date 25.02.2008	Name Schmitt J.	Zeichnung Nr. / Drawing No. T 92.030.5958.0 01K	Index c
		gezeichnet drawn geprüft checked Normgepr. Stand. check			

c	21.06.2016	Vol.. --- mm ³	Ofl./Surf. --- mm ²	Ersatz für / Replacement for:
b	15.05.2014	Type		Benennung/Title
a	15.05.2013	Type		Benennung/Title
Index	Datum / Blatt Date / Sheet	www.wieland-electric.com		ZWISCHENKUPPLUNG intermediate coupling 250V AC 20A
Änderung / Revision				(a)