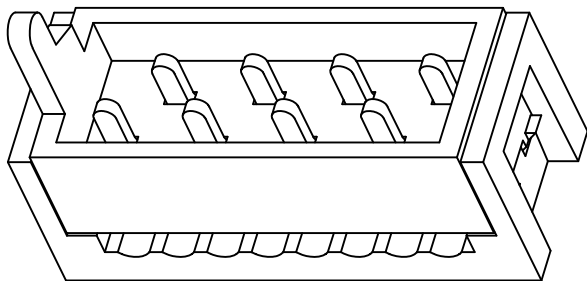
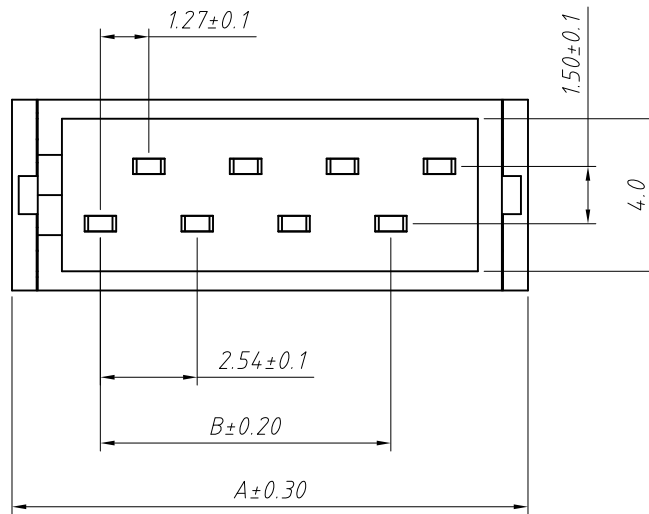
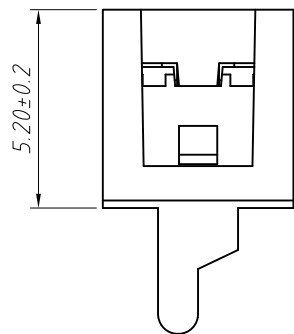
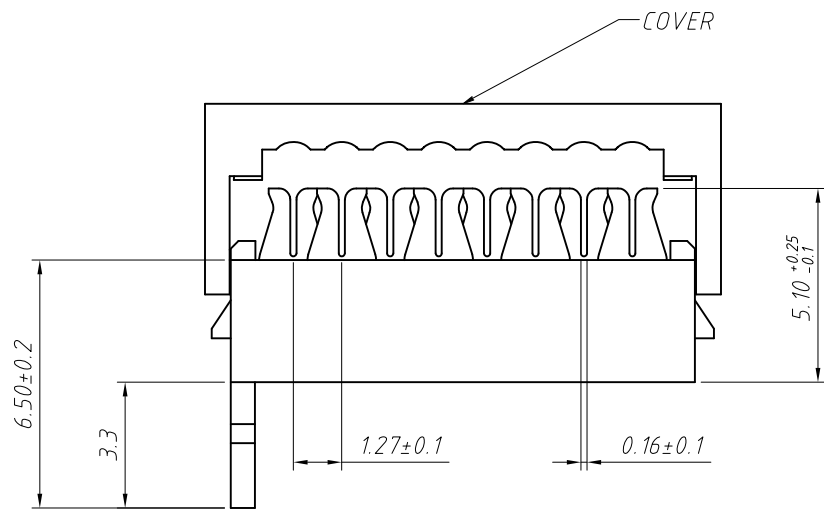
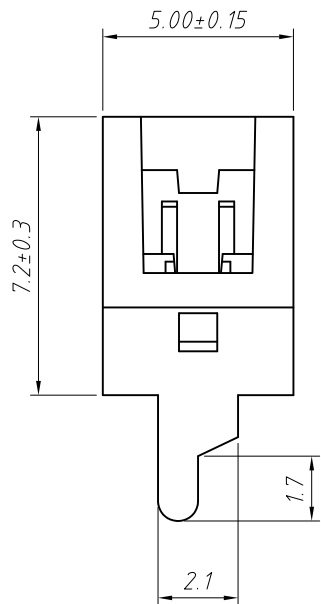


RoHS Compliance



Material:
Housing: PBT Glass Fiber, UL94V-0
Contacts: Brass
Plating: Sn over Ni

Electrical Characteristics:
Current Rating: 1.0 AMP
Contact Resistance: 20m Ohm max.
Insulator Resistance: 1000M Ohm min.
Withstand voltage: 500V AC
Operating Temperature: -40°C ~ +105°C

Poles	DIM.A	DIM.B	Qty/Tube
04	8.45	2.54	68
06	10.99	5.08	52
08	13.53	7.62	42
10	16.07	10.16	36
12	18.61	12.70	31
14	21.15	15.24	27
16	23.69	17.78	24
18	26.23	20.32	22
20	28.77	22.86	20
22	31.31	25.40	18
24	33.85	27.94	17
26	36.39	30.48	16

Order Information:
L-KLS1-204E-XX-R-□-□
L: RoHS
Pitch: 2.54mm
XX-No. of 04 ~ 26pin
Color: R-Red B-Black
Material: NONE=PBT E=PA46
Packing: NONE=Tray T=Tube

ANGLE TOLERANCE	PROJECTION	Description:	
±3°		Micro Match Connector IDC Type	
GENERAL TOLERANCE	UNITS	mm	KLS P/N:
x.x ±0.30	SHEET SIZE	A4	L-KLS1-204E-XX-R-□-□
x.xx ±0.20	Draw:	Daniel	2018-07-10
x.xxx ±0.10	Check:	Daniel	2018-07-10



NingBo KLS ELECTRONIC CO.,L TD.