

## Data sheet

Commercial Art.No.: 91.023.0053.1

Device connector GST15I2L B1H W SW

GST15i2 PCB mount, 2 pole, female (horizontal), coding protection class II 250 V, 16 A, coding color black



Commercial Art.No.	91.023.0053.1
EAN	4049088057779
Order Unit	1

Certificates / Approvals



## Technical data

### General

Rated current	16 A
Rated voltage	250 V
Pollution degree	2
Mechanical coding	Code 1
Rated impulse voltage	4 kV
Lockable	self-locking (unlocking by tool)
Color of coding/ contact carrier	black
Marking of poles	L, N

### Connection Data

Terminations per pole	1
-----------------------	---

### Model

Model	female
Connection type	Soldering connection
Angle of plug	Square
Degree of protection (IP)	IP20
built-in component	Soldering connection

### Material

Housing material	Polyamide
halogen free	yes
Contact material	CuZn
Fire load	0.016 kWh
Insulation components continuous temperature	100 °C

Surface finish	Silver-plated
----------------	---------------

**Dimensions**

Length	21.5 mm
Width	15.1 mm
Height	12.2 mm

**Classification**

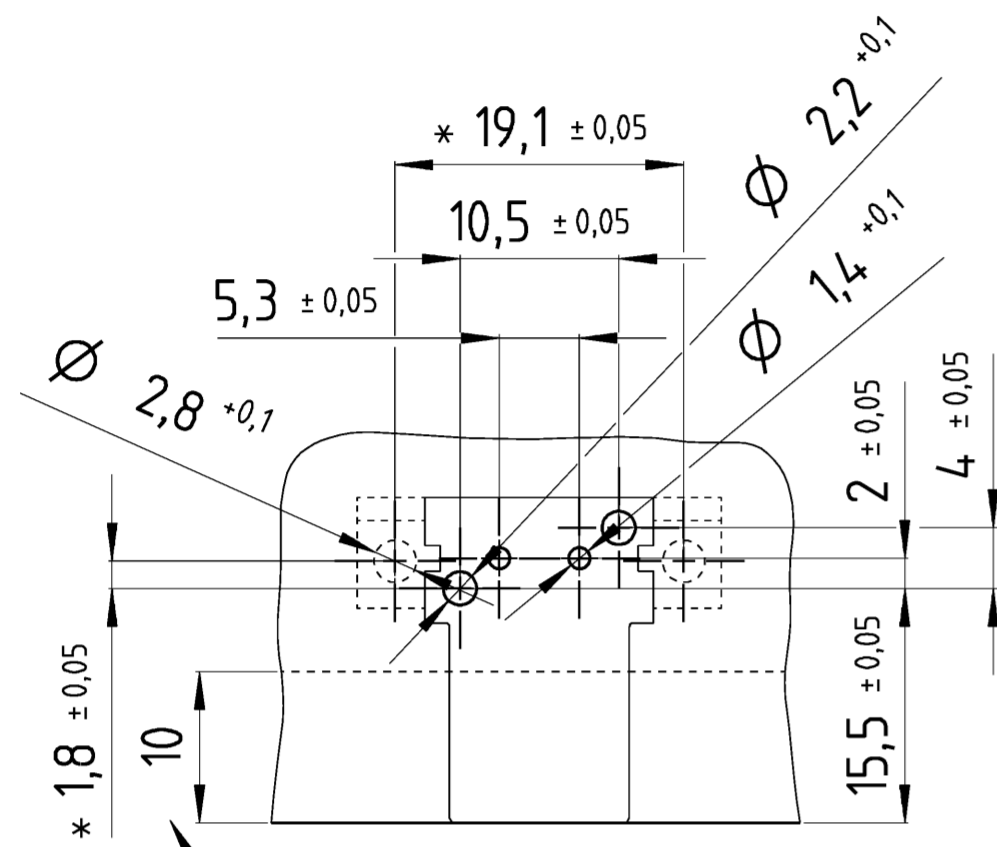
ECLASS 11	
ECLASS 8.1	27440602
ETIM 7.0	EC002566
ETIM 6.0	EC002566
ETIM 5.0	EC002566
ETIM 4.0	EC002566

**Product compliance**

ROHS conformity status	Compliant/Exempted
ROHS exceptions	III-6(c)
REACH-SVHC conformity status	Duty-To-Declare
REACH-SVHC substances	Lead
REACH-SVHC CAS numbers	7439-92-1

GST1512

91.023.0053.0/1  
 91.023.0153.0/1  
 91.023.0253.0  
 91.023.0353.0  
 91.023.0453.0  
 91.023.1053.0  
 91.023.1153.0



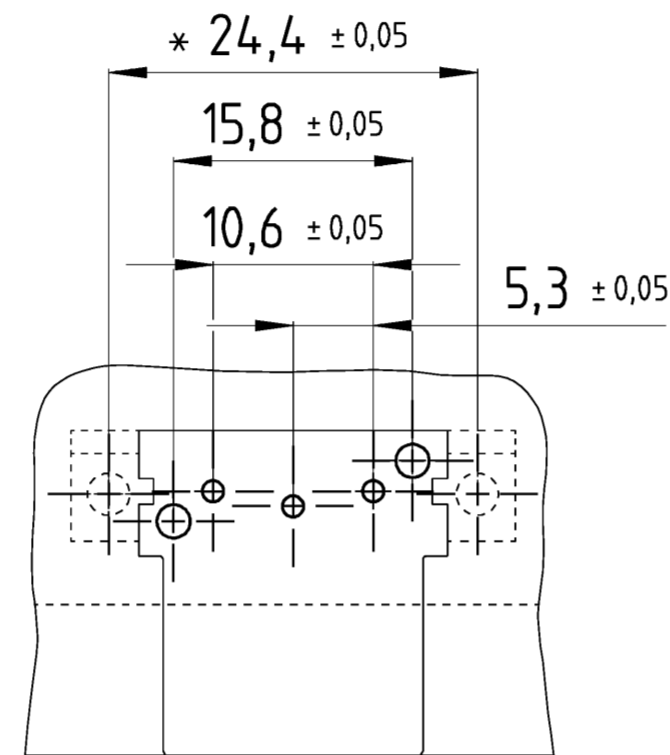
Überstand der Steckverbinder max. 10mm, dahinter muss die Berührsicherheit durch z.B. eine Abdeckung sichergestellt werden!

Overhang of the connectors max. 10mm. Behind the connectors must be an electric shock protection for example by a cover!

\*: optional für Befestigung mit Flansch optionally for fixing with flange

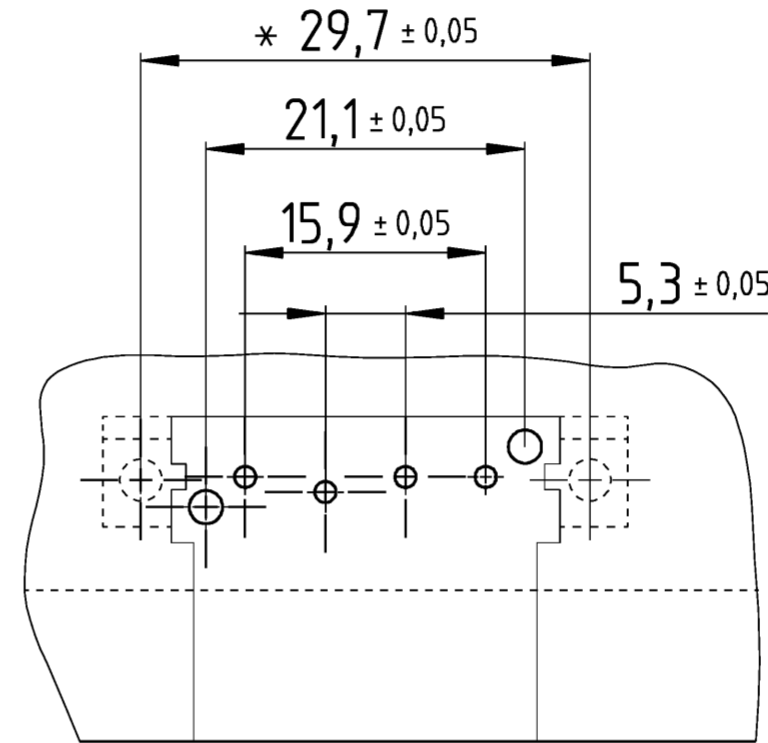
GST1513

91.033.0053.0/1  
 91.033.0153.0/1  
 91.033.0653.0  
 91.033.0753.0



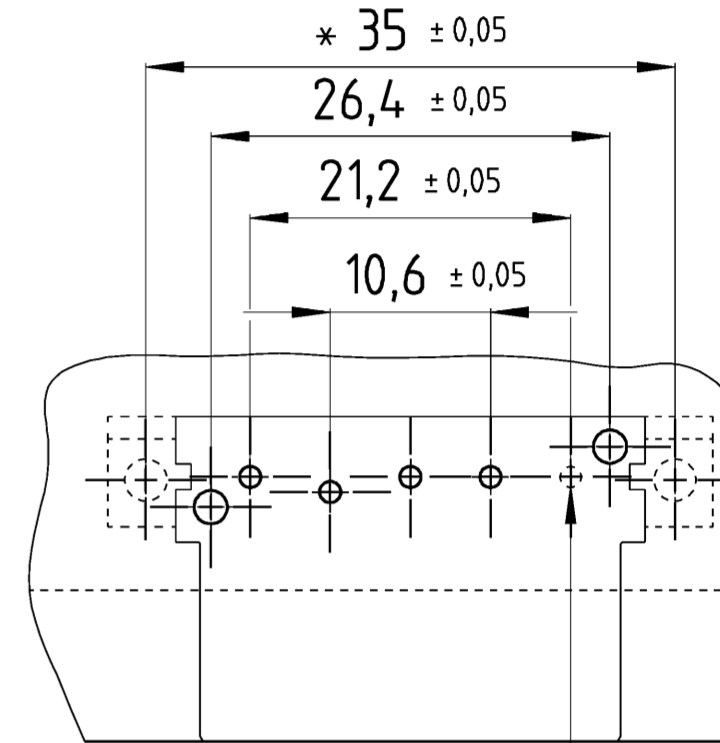
GST1514 SW/WS

91.043.0050.0/1  
 91.043.0150.0/1  
 91.043.1250.0  
 91.043.1350.0  
 91.043.1450.0  
 91.043.1550.0



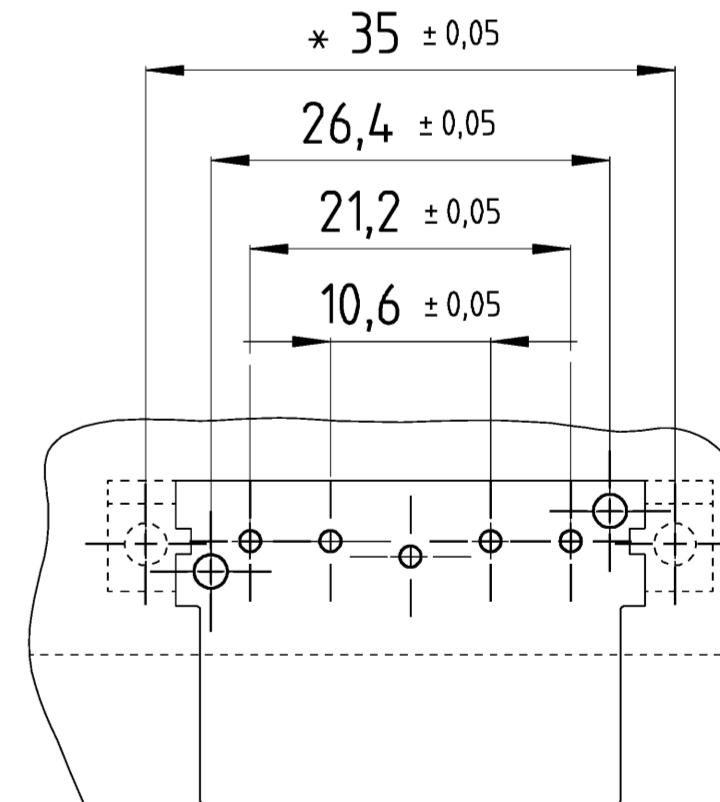
GST1514/5

91.043.0053.0/1  
 91.043.0153.0/1  
 91.053.0053.0/1  
 91.053.0153.0/1  
 91.053.0253.0  
 91.053.0353.0  
 91.053.0453.0  
 91.053.0553.0

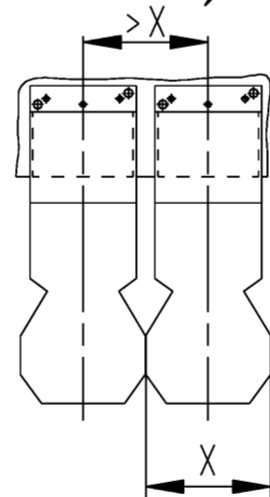


GST1515

91.053.1253.0  
 91.053.1353.0  
 91.053.1453.0  
 91.053.1553.0



Rastermaß X ist über die Breite der Zugentlastung zu bestimmen. The spacing X have to define according to the width of the strain relief



These dimensions will be especially checked at delivery  
 Only inspection dimensions  
 With these dimensions are only valid for internal use

Diese Maße werden bei Abnahme besonders geprüft  
 Ausschließlich Prüfmaße  
 Mit diesen Maßen sind nur für interne Zwecke gültig

Alle Maße sind Verfertigungsdetails. Verwertung und Mitteilung ohne schriftliche Genehmigung sind ausdrücklich untersagt.  
 The reproduction, distribution and utilization of this document as well as the communication of its contents to others without express authorization is prohibited.

nur 5-polig  
 only for 5-pole

Tolerierung Size ISO 14405 © / Tolerance system Size ISO 14405 ©		ja/yes <input checked="" type="checkbox"/> Stoffverfalls- und Deklarationsliste nach WN 5020.010 ist einzuhalten. (This ISO-standard describes the envelope principle. According to the envelope principle the deviations of form and parallelism are limited by the size tolerances)		Conformity with Wieland document WN 5020.010 e (list of prohibited / declarable hazardous substances) to be declared!	
Freitoleranz nach General tolerance		CAD - Zeichnung, keine manuellen Änderungen CAD - drawing, no manual modifications allowed		1. Verwendung: First Use: Blatt: 1 von 1 Sheet: of 1	
Werkstoff / Material		gezeichnet / drawn	Tag/Date	Name	
Maßstab / Scale		geprüft / checked	31.05.2017	Ritter	
Vol.		Ersatz für / Replacement for:		Zeichnung Nr. / Drawing No.	
mm <sup>3</sup> Dfl./Srf.		mm <sup>3</sup>		91_023_0053_011W a	
Index		Type		Benennung/Title	
a		www.wieland-electric.com		BOHRBILD_BU_H	
Änderung / Revision		GST15		Bohrbild-Buchse horizontal hole pattern- female connector	