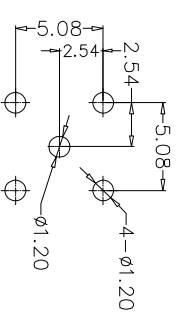
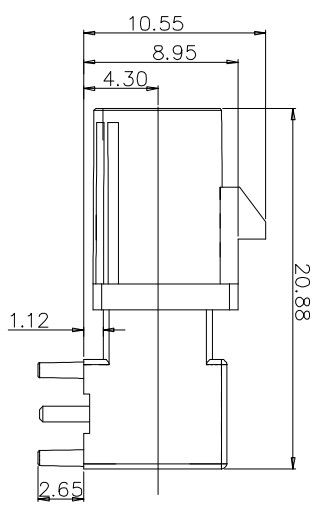
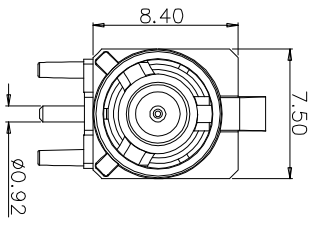
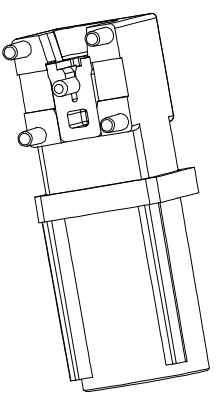
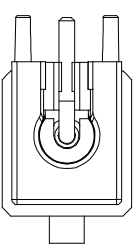
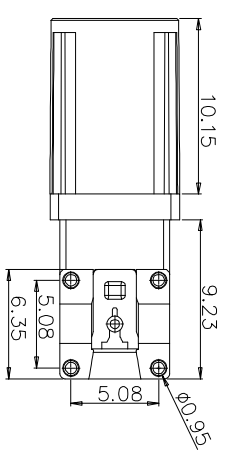




Product NO.		RHT-698-0231		
REV	DESCRIPTION	DWN	DATE	APPROVEN
R1.0	First issue	Gavin	2022/09/07	JIM.KING



PCB LAYOUT

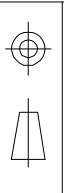


Electrical parameters:  
 Insulation resistance: 1000M $\Omega$  Min  
 Contact resistance: 30m $\Omega$  Max  
 Withstand voltage: 500V AC  
 Insertion/extraction force:  $\leq$ 50N  
 Insertion times: 500 times  
 Operating temperature: -40°C ~ 85°C

NO	Description	Material	Finish	QTY
1	Insulator	PTFE	White	1
2	PIN	BRASS	Gold	1
3	Body	Zinc alloy	Nickel	1
4	Plastic shell	PBT	right table	1
5	Rubber stopper	PTFE	White	1

Coding	Graphics	Colour	Coding	Graphics	Colour
A		Jet Black	G		Blue Gray
B		White	H		Heather Violet
C		Signal Blue	I		Beige
D		Clart Violet	K		Curry
E		Leaf Green	L		Carmine Red
F		Nut Brown	M		Pastel Orange
Z		Water Blue	O		Pastel Green

-TOLERANCES-  
UNLESS OTHERWISE SPECIFIED



PART DESCRIPTION:  
R/A FAKRA MALE FOR PCB

UNLESS OTHERWISE SPECIFIED  
TOLERANCES FOR MILLIMETERS ARE:  
 0.5 - 8mm  $\pm$  0.10mm  
 8 - 30mm  $\pm$  0.15mm  
 30 - 120mm  $\pm$  0.20mm

Appd: JIM.KING	P/N:	RHT-698-0231		
Check:	Date	Scale	Unit	Type
Draw: Gavin	2022.09.07	Free	MM	Z
				Page
				1/1