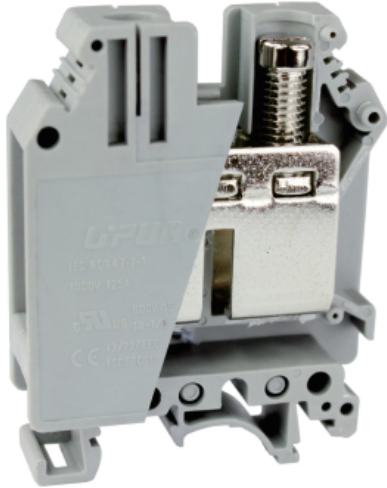


Screw clamping terminal block-UKJ-35-011006







Screw clamping terminal block , rated voltage:1000V , Max. operating current:150A, connection method : screw connection , number of connections : 2 , crimping range : 0.75mm² - 50mm² , thickness:15.2mm , height:61mm , color : grey , mounting type : TH35-7.5、 TH35-15、 G32-15、 G32-18

Product parameter

Parameter	Data
Packing unit (PCS)	20
NW per piece(g)	/
Layers	1
Number of connections	2
Rated cross section(mm ²)	16
Color	grey
Insulation material	PA
Flame retardant grade (UL94)	V0
Rated voltage(V)	1000
Rated current(A)	150
Temperature of insulation material	-40 ~ +125
Wire feed	Terminal side

Product certification

Parameter	Data
Certification logo	
Certification logo	

Parameter	Data
	
Certification logo	
Certification logo	CCS
Certification logo	IECEX
Certification logo	cRU[®] US
Certification logo	
Certification logo	RoHS

Technical data

Parameter	Data
Connection Method	Screw connection
Screw thread	M6
Stripping length(mm)	16
Tightening torque	3.2-3.7
Solid conductors(mm ²)	0.75-50
Stranded conductors(mm ²)	0.75-35

Parameter	Data
Operating temperature ()	-40 ~ +105
Ambient temperature (storage/transportation) ()	-25 ~ +60
Relative humidity	30% ~ 90%
Connection in acc. with standard	IEC 60947-7-1

Dimension

Parameter	Data
Width(mm)	50.5
Thickness(mm)	15.2
Height(mm)	61