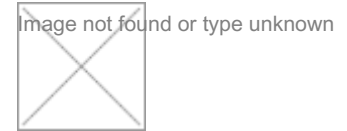


## Data sheet

Commercial Art.No.: 94.603.0631.2

Cable assembly ST16/2BS K1SIBS25 060WS

Extension cable with fuse holder 2x2,5mm<sup>2</sup>, length 0,6m, ST16, 48V/25A, maximum leakage loss of fuse 2,5W, color: white



Commercial Art.No.	94.603.0631.2
EAN	4015573383975
Order Unit	1

## Technical data

### General

Rated current	15 A
Rated voltage	48 V
Rated impulse voltage	0.8 kV
Pollution degree	2
Mechanical coding	yes
Lockable	self-locking (unlocking by tool)
Color of coding/ contact carrier	white

### Model

Nominal cross section conductor	2.5 mm <sup>2</sup>
Degree of protection (IP)	IP20
Cable type	H07G
Cable color	white
Cable diameter max.	4 mm
Version of cable	Other
Type of cord set	connecting cable
Version cable end 1	female
Version cable end 2	male

### Material

Surface finish	Silver-plated
halogen free	yes
Continuous temperature of cable	120 °C
Insulation components continuous temperature	100 °C
Fire load	0.08 kWh

### Dimensions

Total length	0.6 m
--------------	-------

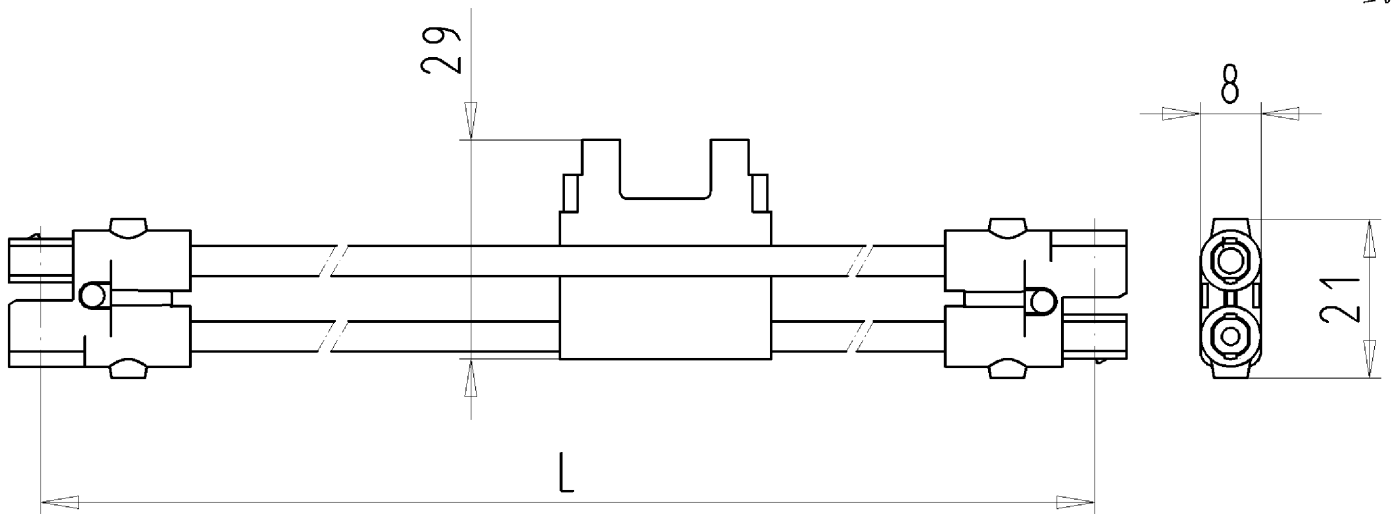
### Classification

ECLASS 11	
ECLASS 8.1	27440604
ETIM 7.0	EC002587
ETIM 6.0	EC002587

ETIM 5.0	EC002587
ETIM 4.0	EC002587

**Product compliance**

ROHS conformity status	Compliant/Exempted
ROHS exceptions	III-6(c)
REACH-SVHC conformity status	Duty-To-Declare
REACH-SVHC substances	Lead
REACH-SVHC CAS numbers	7439-92-1



Weitergabe sowie Vervielfältigung dieses Dokuments, Verwertung und Mitteilung seines Inhalts sind verboten, soweit nicht ausdrücklich gestattet. Die Reproduktion, Distribution und Utilization of this document as well as the communication of its contents to others without express authorization is prohibited.

für folgende Tabellen-Zchnng.:  
 94.603.2453.2 ST16/2 BS

STECKVERBINDUNG ST16  
 94.603.2431.2 10W  
 04.07.2008 Lunz S.  
 M 1:1