

 **DEGSON 高松**

栅栏式端子



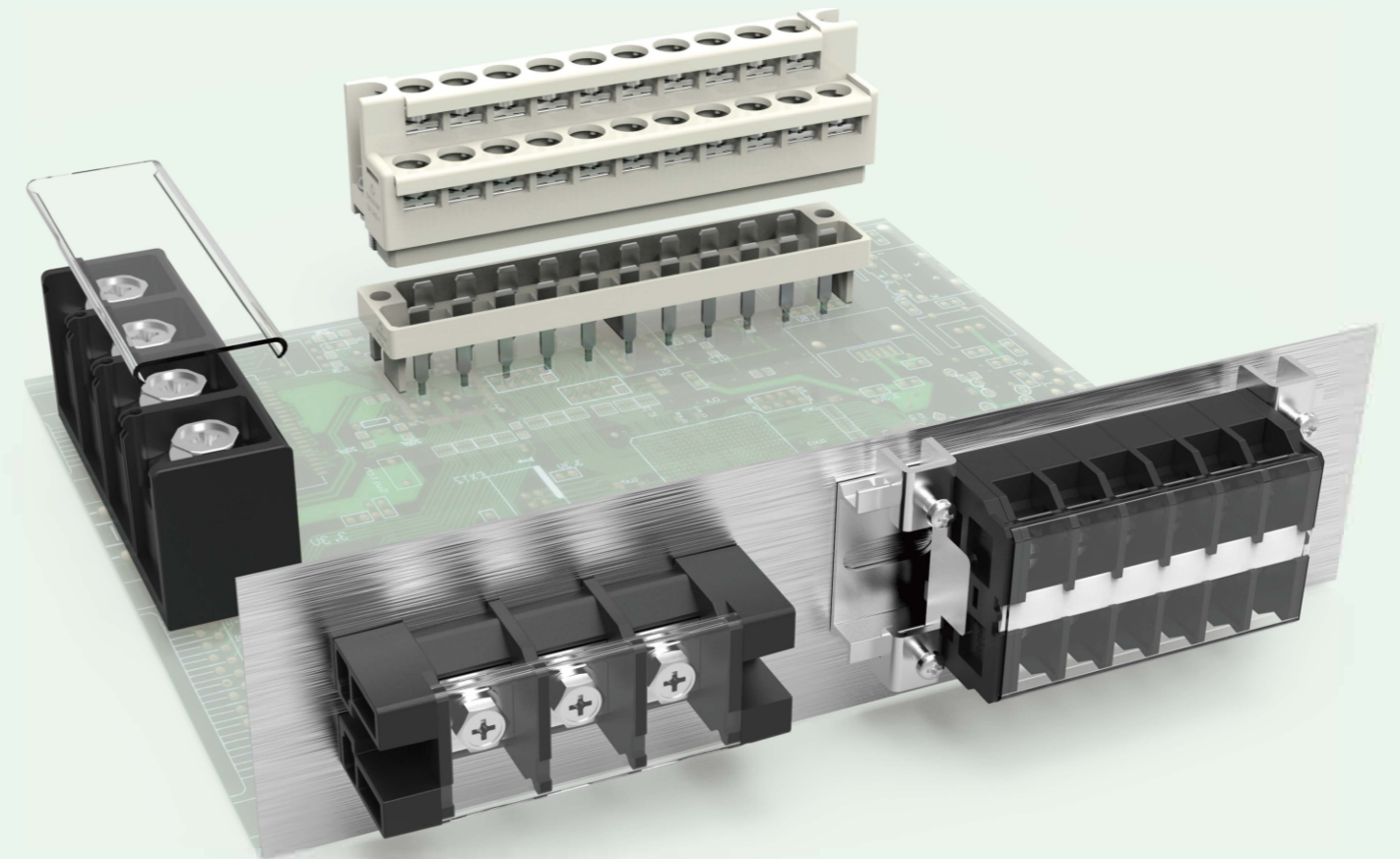
高松官网



微信公众号

ГРУППА КОМПАНИЙ
ПРОМЭЛЕКТРОНИКА

+7 343 372-92-40 degson@promelec.ru
<https://www.promelec.ru/>



高松技术有限公司
DEGSON TECHNOLOGY CO.,LTD.

地址：中国宁波慈溪市逍林大道1585号
邮编：315321

The catalog is for reference purpose only and details are base on company's specifications

网址：www.degson.com
电话：400-885-2488
邮箱：info@degson.com

BR 23-CE01

栅栏式端子

Barrier Terminal Blocks

ISO9001 ISO14001 ISO45001 ISO80079-34 ISO/TS22163 IATF16949  CE ENEC RoHS REACH

公司简介

DEGSON高松创建于1990年，是全球知名的工业连接器整体解决方案提供商、拥有美国UL-CTDP、德国VDE-TDAP和CNAS认证实验室，公司通过了ISO9001、ISO14001、ISO45001、ISO80079-34、ISO/TS22163和IATF16949管理体系认证，是国家高新技术企业。

DEGSON高松拥有行业深厚的模具加工、自动化制造能力，配备先进的检测仪器和专业检测技术，打造高可靠性、高耐用性产品，服务全球用户；同时，我们具有强大的定制化能力，并根据全球客户个性化需求，提供专业的定制化解决方案，为客户提供增值服务。

DEGSON高松产品畅销中国、美国、德国、英国、意大利、西班牙、土耳其、日本、韩国、新加坡等100多个国家和地区，为全球工业自动化、仪器仪表、电力电气、轨道交通、船舶、新能源、电梯、照明、安防、机械、电动两轮车等行业，提供高品质产品和服务，获得了众多世界500强和行业龙头企业的认可。

DEGSON高松以“客户第一、奋斗共赢、责任诚信、追求卓越”的核心价值观，不断整合全球专业技术资源，打造强大的研发创新、产品制造和技术应用能力，依托全球布局，提供系列化、多品种、多型号的高品质产品和服务，为全球客户提供专业、快捷的全连接应用解决方案，帮助客户持续创造价值，致力打造智慧互联世界。

Brief Introduction

Founded in 1990, DEGSON is well known as a comprehensive industrial solution provider, with UL-CTDP, VDE-TDAP and CNAS approved laboratory. DEGSON has passed ISO9001, ISO14001, ISO45001, ISO80079-34, ISO/TS22163 and IATF16949 Management System, and is a national high-tech enterprise.

DEGSON is engaged in supplying highly reliable and durable products to serve global customers. The company has a market-leading capability of mould processing, automatic manufacturing and advanced testing. DEGSON has the complete engineering ability to support global customers with the professional customization solution and value-added service.

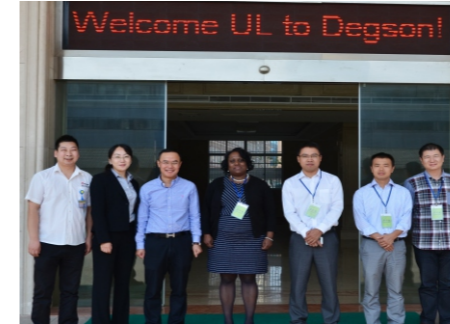
DEGSON products are widely recognized in China, the USA, Germany, the UK, Italy, Spain, Turkey, Japan, South Korea, Singapore, etc. totally hundred countries and regions. DEGSON supply high quality products and provide professional services globally in the industry sectors likely industrial automation, instrument, electric power, railway, marine and offshore, new energy, elevator, lighting, security, machinery, E-bike industry, etc. The company won the recognition from partners among Fortune 500 and industry leading enterprises.

Based on the business philosophy of "Clients First, Win-win Strategy, Responsibility Integrity, Excellence Pursuit.", DEGSON continuously integrates professional technical resources, R&D innovation, product manufacturing and technology application capabilities. Relying on global sales network, DEGSON aims to supply series of multiple varieties of high-quality products and services. We provide global customers with professional and quick connected application solutions, help customers continue to create value. DEGSON is making contributions to creating a smart and interconnected world.

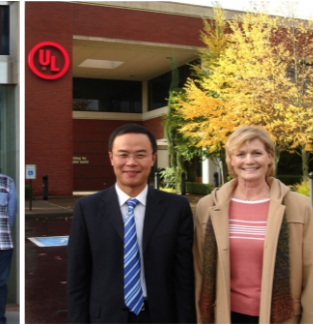


亚洲首家同时拥有美国UL、德国VDE认可的实验室 First UL & VDE Certified Laboratory in Asia

UL、VDE战略合作 Strategic cooperation with UL and VDE



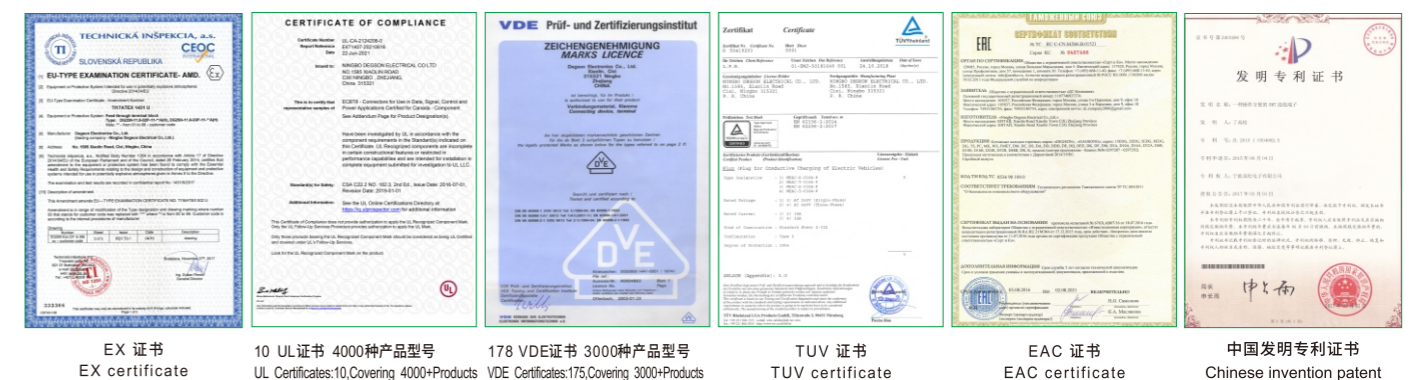
① UL能源与科技全球事业部总经理来访我司
① The general manager of UL global energy & technology division visit our company



② VDE环球服务公司总裁 Sven Ohrke来我司商务洽谈战略合作
② Sven Ohrke, President of VDE global services, discusses mutual strategic cooperation in DEGSON



③ VDE实验室认可：2010年7月VDE正式向DEGSON颁发了“VDE认可实验室”证书。
UL实验室认可：2013年3月UL正式向DEGSON颁发“UL WTDP”证书。
2016年4月，UL颁发了CDTP实验室认可证书。
2016年12月，VDE颁发了TDAP实验室认可证书。
2017年1月，IRIS体系审核通过。
③ VDE Laboratory Accreditation: In July 2010, VDE issued the "VDE Authorized Laboratory" certificate to DEGSON laboratory.
UL laboratory accreditation: UL formally issued "UL WTDP" certificate to DEGSON in March 2013.
In April, 2016, UL-CTDP.
In December, 2016, VDE-TDAP.
In January, 2017, Pass IRIS system audit.



EX 证书 EX certificate 10 UL证书 4000种产品型号 UL Certificates:10,Covering 4000+Products 178 VDE证书 3000种产品型号 VDE Certificates:175,Covering 3000+Products TUV 证书 TUV certificate EAC 证书 EAC certificate 中国发明专利证书 Chinese invention patent

DEGSON高松全球生产基地/研发中心
DEGSON Global Production Base and R&D Center



总部工厂



高新区工厂



越南工厂



南京竞争力中心



洛阳研发中心

DEGSON高松产品销往全球100多个国家和地区
DEGSON products are very popular more than 100 countries and areas.



目录 CONTENTS

新品速递 New products list

DG35-30Z(H)/DG250-A/DG100D-A/DG200D-A.....01-02

冷压端子/铜鼻子/铝端子
Cold-Pressed Terminals/Copper Nose/Aluminum terminal03-04

通用单层PCB Single level type

DG16/DG25/DG26/DG28..... 08

DG35/DG36/DG38/DG45/DG46/DG48..... 09

DG55/DG58/DG31-B/DG65/DG66/DG66S-2-B.....10

DG66-DA/DG66-DB/DG66H-B/DG66RT/DG66VT..... 11

DG78/DG90-B/DG88/DG88RT..... 12

DG1450-B/DG1450H-B/DG1450H-B-(10A-40A)..... 13

DG1700-B/DG1716-B/DG2000-B/DG2000H-B.....14

DG2020-B/DG2020-B-10A/DG2350/DG2350H-50A.....15

双层PCB-PLC端子 Double level type

DG24-1/DG24-2/DG24-3/DG24-4/DG24-5.....17

DG24B-1/DG24B-2/DG44-1/DG44B-1.....18

栅栏转接端子 Transfer type

DG49-A/DG69-A/DG89-A/DG98-A/DG99-A.....20

DG30-A/DG40-A/DG75-A/DG100-A/DG150-A/DG200-A.....21

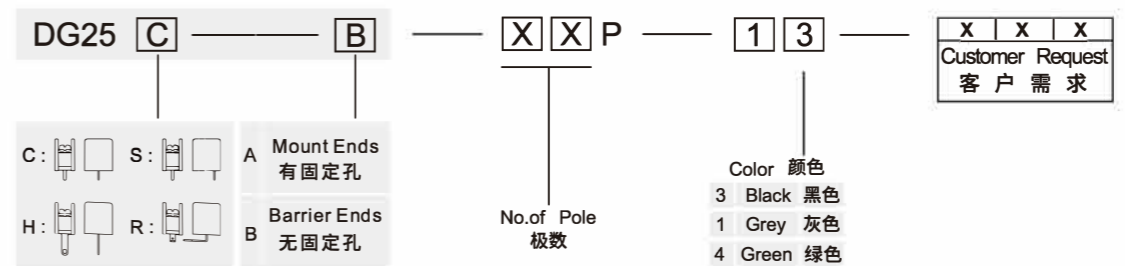
DGR10/DGR20/DGR30/DGR40/DGR60/DGR100.....22

DGR150/DGR200/DG240/DGR300/DGR500.....23

DGB40/DGB100.....24

DG97-A/DG32-A.....25

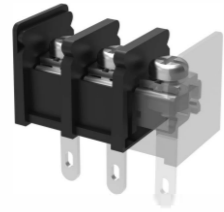
HOW TO ORDER 订货方法



The catalog is only for reference, and the detailed data must be based on our company's specification!
样本仅供参考, 具体数据以本公司提供的规格书为准!

新品速递 >>>

DG35-30Z(H)



扭力性提升200%，锁紧更可靠；
外形尺寸不变，可直接升级替换。
适用于变频器、伺服、电源等设备。

Torque improved by 200%,
ensuring reliable connection.
The dimensions unchanged and
can be directly replaced. Used
for VFD, servo, power supply and
others.

类别 Category	DG35-30Z		
使用级别 Use group	E		
电压(V) Rated voltage	300	/	300
电流(A) Rated current	20	/	10
线径(AWG) Wire range	22-12		
耐电压 Withstanding voltage	AC1600V/1Min		
绝缘阻抗 Insulation resistance	500MΩ/DC500V		
塑件 Housing	PA66+GF,UL94V-0		
端子 Terminal	铜合金, 镀镍 Copper alloy, Ni plated		
螺丝 Screws	M3, 钢镀锌 Steel, Ni plated 1.5N.m/13.28Lb.In		
使用温度 Ambient temperature	-40~105°C		
极数 Poles	2-14P		
产品尺寸图 Panel cutout			

DG100D-A



“两进一出”穿墙端子
产品颜色区分正负极, 红正黑负,
无需标识使用省心。适用于储能
PACK间串并联。

2 poles short circuit panel feed-
through terminal.
Red is positive and black is
negative, no need to mark.
Used for parallel connection
between PACK.

类别 Category	DG100D-A		
使用级别 Use group	B	C	D
电压(V) Rated voltage	600	300	600
电流(A) Rated current	120	120	5
线径(AWG) Wire range	10-2		
耐电压 Withstanding voltage	AC2200V/1Min		
绝缘阻抗 Insulation resistance	500MΩ/DC500V		
塑件 Housing	PA66+GF,UL94V-0		
端子 Terminal	铜合金, 镀镍 Copper alloy, Ni plated		
螺丝 Screws	M6, 钢镀锌 Steel, Ni plated 5.0N.m/44.27Lb.In		
使用温度 Ambient temperature	-40~105°C		
极数 Poles	2P,4P		
产品尺寸图 Panel cutout			

DG250-A

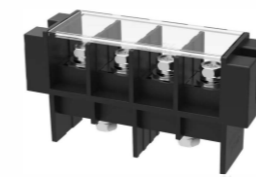


穿墙结构可轻松实现设备内外部的
连接; 电流范围40A-300A, 满足不
同功率设备使用。

Panel feed-through structure can
realize enclosure connection
easily. Current range from 40A to
300A, satisfying different device
application.

类别 Category	DG250-A		
使用级别 Use group	E		
电压(V) Rated voltage	1000		
电流(A) Rated current	250		
线径(AWG) Wire range	6-3/0		
耐电压 Withstanding voltage	AC3000V/1Min		
绝缘阻抗 Insulation resistance	500MΩ/DC500V		
塑件 Housing	PA66+GF,UL94V-0		
端子 Terminal	铜合金, 镀镍 Copper alloy, Ni plated		
螺丝 Screws	M8, 钢镀锌 Steel, Zinc plated 6.0N.m/53.12Lb.In		
使用温度 Ambient temperature	-40~120°C		
极数 Poles	2-5P		
产品尺寸图 Panel cutout			

DG200D-A



“两进一出”穿墙端子
产品颜色区分正负极, 红正黑负,
无需标识使用省心。适用于储能
PACK间串并联。

2 poles short circuit panel feed-
through terminal.
Red is positive and black is
negative, no need to mark.
Used for parallel connection
between PACK.

类别 Category	DG200D-A		
使用级别 Use group	B	C	D
电压(V) Rated voltage	600	600	600
电流(A) Rated current	200	200	5
线径(AWG) Wire range	2-3/0		
耐电压 Withstanding voltage	AC2200V/1Min		
绝缘阻抗 Insulation resistance	500MΩ/DC500V		
塑件 Housing	PA66+GF,UL94V-0		
端子 Terminal	铜合金, 镀镍 Copper alloy, Ni plated		
螺丝 Screws	M8, 钢镀锌 Steel, Zinc plated 6.0N.m/53.12Lb.In		
使用温度 Ambient temperature	-40~105°C		
极数 Poles	2P,4P		
产品尺寸图 Panel cutout			

栅栏配套冷压端子 Matching terminal for barrier connector

不仅可以提供栅栏产品方案, 同时对应冷压端子, 一站式购齐, 解决客户多家供应商协调问题。

Providing barrier connection program and matching terminals customers can easily get one-stop purchasing. No need to spending time looking for other suppliers

冷压端子——预绝缘接头

Cold-Pressed Terminal–
Vinyl-Insulated Terminal



冷压端子——钩型端子

Cold-Pressed Terminal–
Hook Terminal



钩型绝缘端子
Insulated Hook
Terminal

冷压端子 Cold-Pressed Terminals

冷压端子——裸端子

Cold-Pressed Terminal–
Non-Insulated Terminal



RNB-圆形裸端子
RNB-Non-Insulated
Ring Terminal



SNB-叉形裸端子
SNB-Non-Insulated
Spade Terminal



DBN-片形裸端子
DBN-Non-Insulated
Blade Terminal



PTN-针形裸端子
PTN-Non-Insulated
Pin Terminal

冷压端子——绝缘端子

Cold-Pressed Terminal–
Insulated Terminal



RV-圆形绝缘端子
RV-Insulated Ring
Terminal



SV-叉形绝缘端子
SV-Insulated Spade
Terminal



DBV-片形绝缘端子
DBV-Insulated Blade
Terminal



PTV-针形绝缘端子
PTV-Insulated Pin
Terminal

铜鼻子 Copper Nose

铝制端子头适配铝载流体, 多用于电力行业。

Aluminum terminal adapted to aluminum carrier fluid, mostly used in the power industry.

铜鼻子

Copper Nose



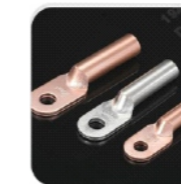
SC 窥口鼻端子
SC Voyeur Terminal



OT 开口鼻端子
OT Open Copper
Terminal



JG 铜接线端子
JG Copper Terminal



DT 铜接线端子
DT Copper Terminal



双孔铜铝鼻子
Double-Hole Copper-
Aluminum Terminal



双孔铜鼻子
Double-Hole Copper
Terminal

铝端子 Aluminum terminal

主要是OT头, 接线面积可达1000mm², 适用于大电流场景。

That shape is mainly O-shaped, which cross section can reach 1000mm², and suitable for high current connection.



铜铝鼻子

Copper-Aluminum
Terminal Blocks



方形
Square

圆形
Ring

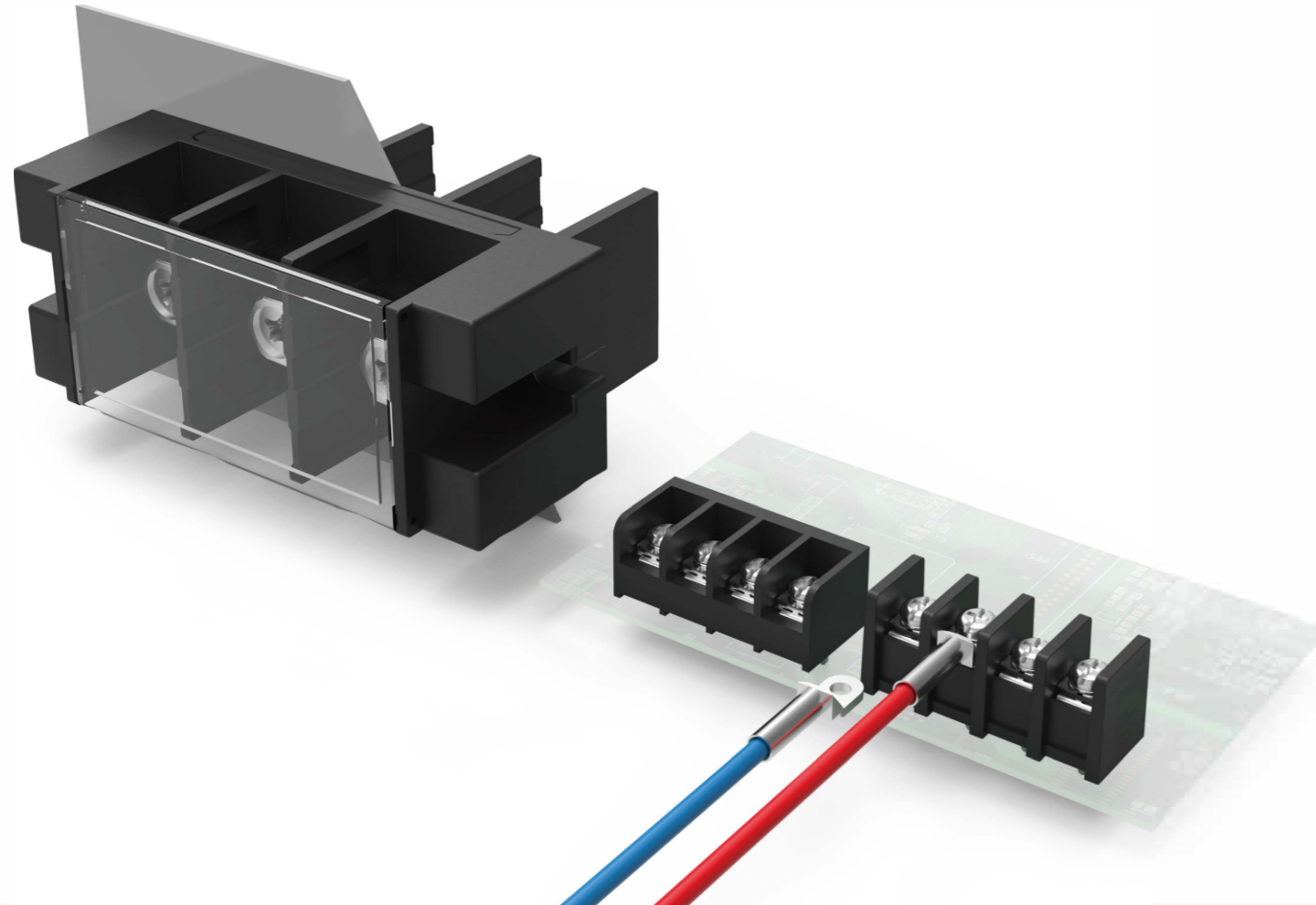
DT头
DT

栅栏式接线端子

DEGSON高松栅栏式接线端子采用螺钉连接方式,能承载较大的扭力,广泛应用于工业自动化,电源,新能源,安防等行业

Barrier Terminals

DEGSON Barrier terminal block adopts screw connection method, which can bear large torque and is widely used in industrial automation, power supply, new energy, security and other industries



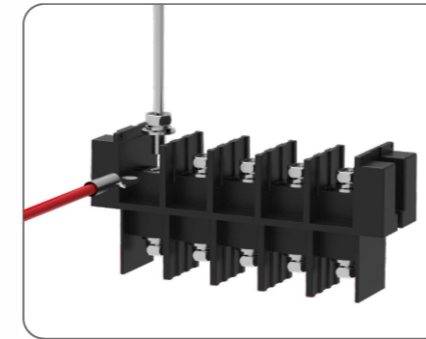
主要特点

- ✔ 螺钉锁紧,可承受大扭力,接线牢靠
- ✔ 产品线齐全,有焊板产品和线对线产品
- ✔ 提供一体式/可插拔式的双层结构,节省空间
- ✔ 安装方式有焊板、面板和导轨安装
- ✔ 最大电压可做到1000V,最大电流可做到500A

Features

- ✔ Screw locking, can withstand large torque, reliable wiring.
- ✔ The product line is complete, including welding board products and wire-to-wire products.
- ✔ Provide one-piece/pluggable double-layer structure to save space.
- ✔ The installation methods include welding plate, panel and rail installation.
- ✔ The maximum voltage can reach 1000V, and the maximum current can reach 500A.

产品特点 Feature

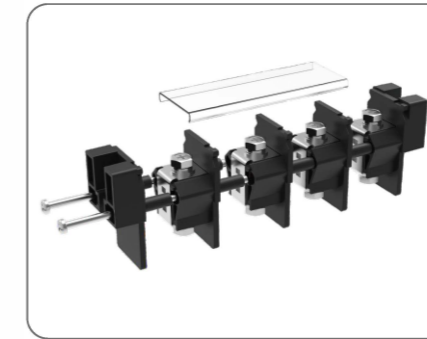


栅栏结构,螺钉连接

可用大扭力锁紧,连接可靠

Barrier structure,screw connection

Locking with heavy torque,connection is reliable

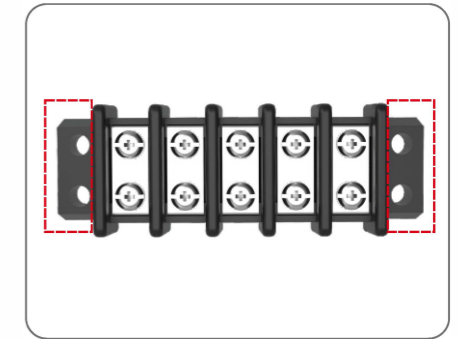


可拼接结构

灵活组合,交期快

Spliced structure

Combination is flexible and delivery is fast

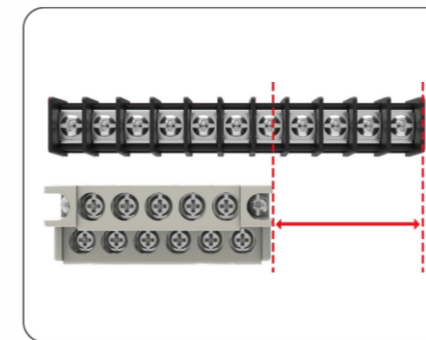


法兰结构

安装简单,更牢固

Flange Structure

Easy to install



双层结构

节省更多空间,满足紧凑多接点的需求

Double-layer Structure

Saving space and meeting the needs of compact multi-contact

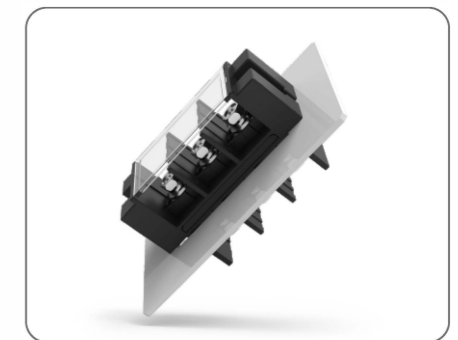


螺钉免拆装技术

螺丝可保持松退状态,节省50%接线时间

Screw Disassemble-free technology

Screws are unlocked,which can save 50% time



穿墙结构

轻松连接壳体内外

Feed-through Structure

Suitable for enclosure connection



盖板结构

防尘防触摸,更安全

Cover Structure

Prevent electric shock, dusty



多种规格型号

提供更多选择

Multiple Specification

Provide more choices



多种安装方式

焊板、导轨、面板等多种安装方式,适用不同场景

Multiple Installation Methods

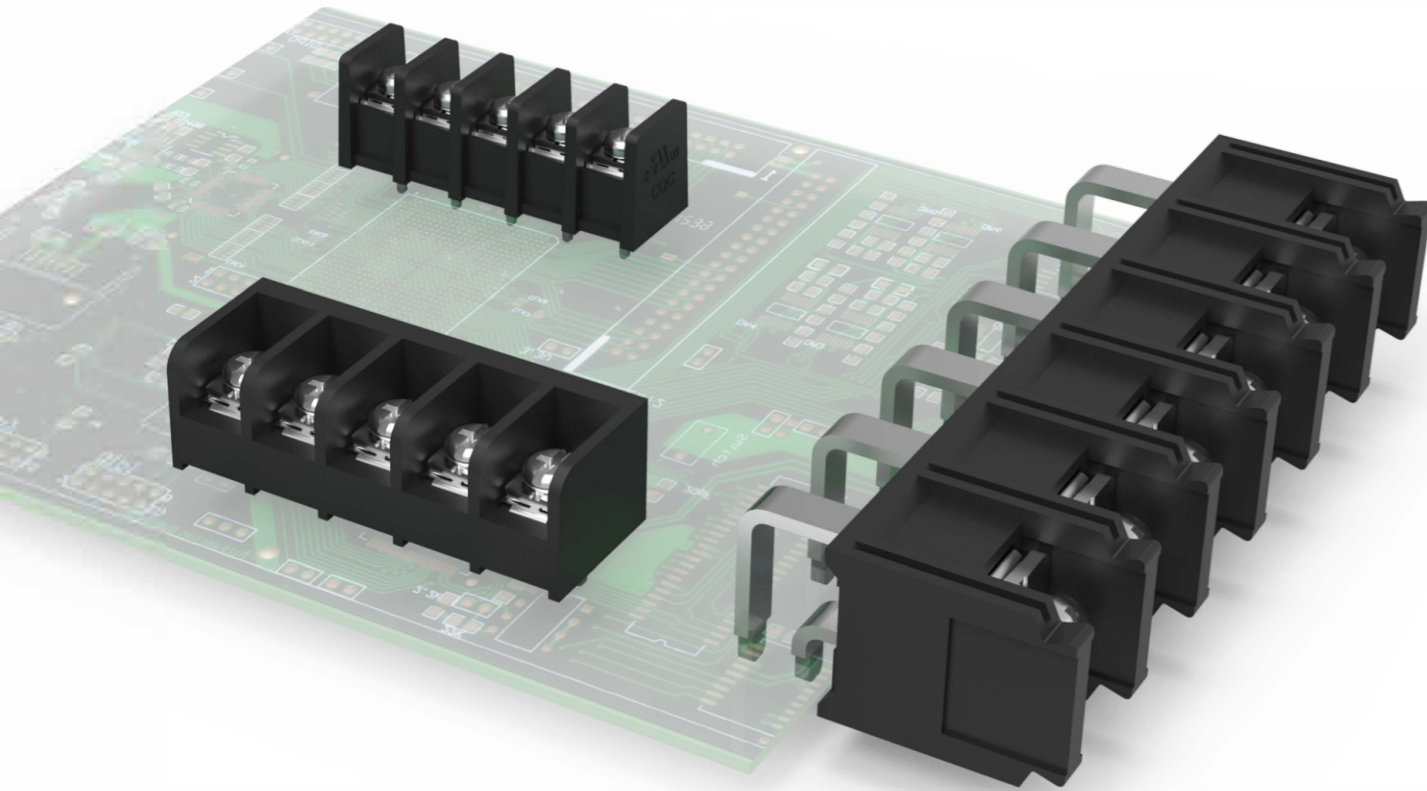
Soldering,DIN-rail and panel installation, Suitable for different application

通用单层PCB

多种规格间距、不同结构的产
品可供选择,满足不同应用场
景使用需求

Single level type

A variety of pitch and structure
products for customers to choose
meeting different application
requirements



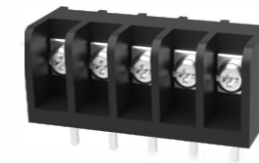
产品特点

- ✔ 额定电流10~120A, 额定电压300-600V
- ✔ 栅栏式接线结构, 连接稳定可靠
- ✔ 多种增值服务: 印字、其他特殊要求
- ✔ 应用领域: 工控、电力电源

Feature

- ✔ Rated current: 8-120A, rated voltage: 300-600V
- ✔ Barrier wiring structure, stable and reliable connection
- ✔ Multiple value-added services: printing, other special requirement
- ✔ Application: Industrial automation, Electric power

间距 Pitch: 6.35mm



DG16 规格 Type: R-B, S-B

类别 Category	DG16		
使用级别 Use group	B	C	D
电压(V) Rated voltage	300	150	300
电流(A) Rated current	10	10	10
线径(AWG) Wire range	22-16		
耐电压 Withstanding voltage	AC1600V/1Min		
绝缘阻抗 Insulation resistance	500MΩ/DC500V		
塑件 Housing	PA66, UL94V-0		
端子 Terminal	铜合金, 镀锡 Copper alloy, Tin plated		
螺丝 Screws	M2.5, 钢镀镍 Steel, Ni plated 0.4N.m/3.5Lb.In		
使用温度 Ambient temperature	-40~105°C		
极数 Poles	2-24		
产品尺寸图 Panel cutout			

间距 Pitch : 7.62mm



DG25 规格 Type: C-A, C-B, S-A, S-B
R-A, R-B, H-A, H-B



DG26 规格 Type: GC-B



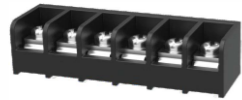
DG28 规格 Type: C-A, C-B, S-A, S-B
R-A, R-B, H-A, H-B

类别 Category	DG25			DG26			DG28		
使用级别 Use group	B	C	D	B	C	D	B	C	D
电压(V) Rated voltage	300	300	300	300	-	300	300	150	300
电流(A) Rated current	15	15	10	15	-	10	15	15	10
线径(AWG) Wire range	22-14			22-14			22-14		
耐电压 Withstanding voltage	AC1600V/1Min			AC1600V/1Min			AC1600V/1Min		
绝缘阻抗 Insulation resistance	500MΩ/DC500V			500MΩ/DC500V			500MΩ/DC500V		
塑件 Housing	PA66, UL94V-0			PA66, UL94V-0			PA66, UL94V-0		
端子 Terminal	铜合金, 镀锡 Copper alloy, Tin plated			铜合金, 镀锡 Copper alloy, Tin plated			铜合金, 镀锡 Copper alloy, Tin plated		
螺丝 Screws	M3, 钢镀镍 Steel, Ni plated 0.5N.m/4.4Lb.In			M3, 钢镀镍 Steel, Ni plated 0.5N.m/4.4Lb.In			M3, 钢镀镍 Steel, Ni plated 0.5N.m/4.4Lb.In		
使用温度 Ambient temperature	-40~105°C			-40~105°C			-40~105°C		
极数 Poles	2-26			2-12			2-26		
产品尺寸图 Panel cutout									

间距 Pitch: 8.25mm



DG35 规格 Type: C-A, C-B, S-A, S-B
R-A, R-B, H-A, H-B



DG36 规格 Type: S-B, R-B



DG38 规格 Type: C-A, C-B, S-A, S-B
R-A, R-B, H-A, H-B

类别 Category	DG35			DG36			DG38		
	B	C	D	B	C	D	B	C	D
使用级别 Use group	B	C	D	B	C	D	B	C	D
电压(V) Rated voltage	300	-	300	300	-	300	300	150	300
电流(A) Rated current	20	-	10	20	-	10	15	15	10
线径(AWG) Wire range	22-12			22-12			22-14		
耐电压 Withstanding voltage	AC1600V/1Min			AC1600V/1Min			AC1600V/1Min		
绝缘阻抗 Insulation resistance	500MΩ/DC500V			500MΩ/DC500V			500MΩ/DC500V		
塑件 Housing	PA66, UL94V-0			PA66, UL94V-0			PA66, UL94V-0		
端子 Terminal	铜合金, 镀锡 Copper alloy, Tin plated			铜合金, 镀锡 Copper alloy, Tin plated			铜合金, 镀锡 Copper alloy, Tin plated		
螺丝 Screws	M3, 钢镀锌 Steel, Ni plated 0.5N.m/4.4Lb.In			M3, 钢镀锌 Steel, Ni plated 0.5N.m/4.4Lb.In			M3, 钢镀锌 Steel, Ni plated 0.5N.m/4.4Lb.In		
使用温度 Ambient temperature	-40~105°C			-40~105°C			-40~105°C		
极数 Poles	2-26			2-24			2-26		
产品尺寸图 Panel cutout									

间距 Pitch: 10.0mm



DG55 规格 Type: C-A, C-B, S-A, S-B
R-A, R-B, H-A, H-B



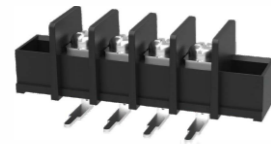
DG58 规格 Type: S-B, R-B



DG31-B 规格 Type: C-A, C-B, S-A, S-B
R-A, R-B, H-A, H-B

类别 Category	DG55			DG58			DG31-B		
	B	C	D	B	C	D	B	C	D
使用级别 Use group	B	C	D	B	C	D	B	C	D
电压(V) Rated voltage	300	300	300	300	150	300	300	300	600
电流(A) Rated current	20	20	10	20	20	10	30	30	5
线径(AWG) Wire range	22-12			22-12			6/18-10		
耐电压 Withstanding voltage	AC1600V/1Min			AC1600V/1Min			AC1600V/1Min		
绝缘阻抗 Insulation resistance	500MΩ/DC500V			500MΩ/DC500V			500MΩ/DC500V		
塑件 Housing	PA66, UL94V-0			PA66, UL94V-0			PA66, UL94V-0		
端子 Terminal	铜合金, 镀锡 Copper alloy, Tin plated			铜合金, 镀锡 Copper alloy, Tin plated			铜合金, 镀锡 Copper alloy, Tin plated		
螺丝 Screws	M4, 钢镀锌 Steel, Ni plated 1.2N.m/10.5Lb.In			M4, 钢镀锌 Steel, Ni plated 1.2N.m/10.5Lb.In			M4, 钢镀锌 Steel, Ni plated 1.2N.m/10.5Lb.In		
使用温度 Ambient temperature	-40~105°C			-40~105°C			-40~120°C		
极数 Poles	2-26			2-22			6-10		
产品尺寸图 Panel cutout									

间距 Pitch: 9.5mm



DG45 规格 Type: C-A, C-B, S-A, S-B
R-A, R-B, H-A, H-B



DG46 规格 Type: S-B, R-B, GS-B, GR-B
DA, DB



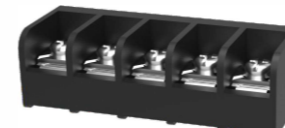
DG48 规格 Type: C-A, C-B, S-A, S-B
R-A, R-B, H-A, H-B

类别 Category	DG45			DG46			DG48		
	B	C	D	B	C	D	B	C	D
使用级别 Use group	B	C	D	B	C	D	B	C	D
电压(V) Rated voltage	300	-	300	300	300	300	300	150	300
电流(A) Rated current	25	-	10	30	30	10	20	20	10
线径(AWG) Wire range	22-12			22-10			22-12		
耐电压 Withstanding voltage	AC1600V/1Min			AC1600V/1Min			AC1600V/1Min		
绝缘阻抗 Insulation resistance	500MΩ/DC500V			500MΩ/DC500V			500MΩ/DC500V		
塑件 Housing	PA66, UL94V-0			PA66, UL94V-0			PA66, UL94V-0		
端子 Terminal	铜合金, 镀锡 Copper alloy, Tin plated			铜合金, 镀锡 Copper alloy, Tin plated			铜合金, 镀锡 Copper alloy, Tin plated		
螺丝 Screws	M4, 钢镀锌 Steel, Ni plated 1.2N.m/10.5Lb.In			M4, 钢镀锌 Steel, Ni plated 1.2N.m/10.5Lb.In			M4, 钢镀锌 Steel, Ni plated 1.2N.m/10.5Lb.In		
使用温度 Ambient temperature	-40~105°C			-40~105°C			-40~105°C		
极数 Poles	2-26			2-26			2-22		
产品尺寸图 Panel cutout									

间距 Pitch: 11mm



DG65 规格 Type: C-A, C-B, S-A, S-B
R-A, R-B, H-A, H-B



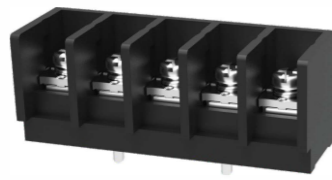
DG66 规格 Type: S-B, R-B



DG66S-2-B

类别 Category	DG65			DG66			DG66S-2-B		
	B	C	D	B	C	D	B	C	D
使用级别 Use group	B	C	D	B	C	D	B	C	D
电压(V) Rated voltage	300	-	300	300	150	300	600	600	600
电流(A) Rated current	30	-	10	30	30	10	30	30	5
线径(AWG) Wire range	22-10			22-10			22-10		
耐电压 Withstanding voltage	AC1600V/1Min			AC1600V/1Min			AC2200V/1Min		
绝缘阻抗 Insulation resistance	500MΩ/DC500V			500MΩ/DC500V			500MΩ/DC500V		
塑件 Housing	PA66, UL94V-0			PA66, UL94V-0			PA66, UL94V-0		
端子 Terminal	铜合金, 镀锡 Copper alloy, Tin plated			铜合金, 镀锡 Copper alloy, Tin plated			铜合金, 镀锡 Copper alloy, Tin plated		
螺丝 Screws	M4, 钢镀锌 Steel, Ni plated 1.2N.m/10.5Lb.In			M4, 钢镀锌 Steel, Ni plated 1.2N.m/10.5Lb.In			M4, 钢镀锌 Steel, Ni plated 1.2N.m/10.5Lb.In		
使用温度 Ambient temperature	-40~105°C			-40~105°C			-40~105°C		
极数 Poles	2-22			2-26			2-5		
产品尺寸图 Panel cutout									

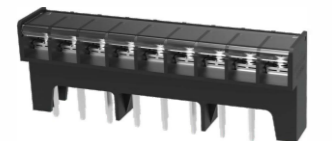
间距 Pitch: 11mm/11.5mm



DG66-DA



DG66-DB



DG66H-B

类别 Category	DG66-DA			DG66-DB			DG66H-B		
使用级别 Use group	B	C	D	B	C	D	B	C	D
电压(V) Rated voltage	600	600	600	600	600	600	600	-	600
电流(A) Rated current	30	30	5	30	30	5	30	-	5
线径(AWG) Wire range	22-10			22-10			20-10		
耐电压 Withstanding voltage	AC2200V/1Min			AC2200V/1Min			AC2200V/1Min		
绝缘阻抗 Insulation resistance	500MΩ/DC500V			500MΩ/DC500V			500MΩ/DC500V		
塑件 Housing	PA66,UL94V-0			PA66,UL94V-0			PA66,UL94V-0		
端子 Terminal	铜合金, 镀锡 Copper alloy, Tin plated			铜合金, 镀锡 Copper alloy, Tin plated			铜合金, 镀锡 Copper alloy, Tin plated		
螺丝 Screws	M4, 钢镀锌 Steel, Ni plated 1.8m/16Lb.In			M4, 钢镀锌 Steel, Ni plated 1.8m/16Lb.In			M4, 钢镀锌 Steel, Ni plated 1.2m/10.5Lb.In		
使用温度 Ambient temperature	-40~105°C			-40~105°C			-30~120°C		
极数 Poles	2-25			2-25			9		
产品尺寸图 Panel cutout									

间距 Pitch: 13.0mm/15.5mm



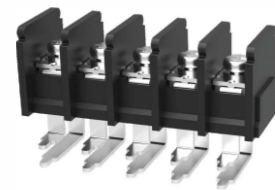
DG78 规格 Type: C-A, C-B, S-A, S-B
R-A, R-B, H-A, H-B



DG90-B

类别 Category	DG78			DG90-B		
使用级别 Use group	B	C	D	B	C	D
电压(V) Rated voltage	600	600	600	600	600	600
电流(A) Rated current	40	40	5	90	90	5
线径(AWG) Wire range	18-10			22-6		
耐电压 Withstanding voltage	AC2200V/1Min			AC2200V/1Min		
绝缘阻抗 Insulation resistance	500MΩ/DC500V			500MΩ/DC500V		
塑件 Housing	PA66,UL94V-0			PBT,UL94V-0		
端子 Terminal	铜合金, 镀锡 Copper alloy, Tin plated			铜合金, 镀锡 Copper alloy, Ni plated		
螺丝 Screws	M4, 钢镀锌 Steel, Ni plated 1.2m/10.5Lb.In			M6, 钢镀锌 Steel, Ni plated 3.5m/31Lb.In		
使用温度 Ambient temperature	-40~105°C			-30~120°C		
极数 Poles	2-22			3		
产品尺寸图 Panel cutout						

间距 Pitch: 11mm



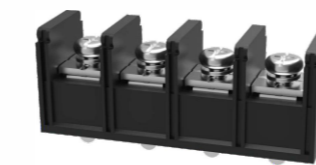
DG66RT



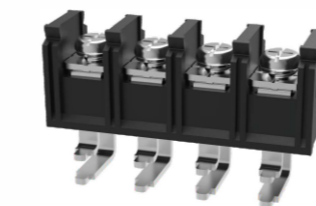
DG66VT

类别 Category	DG66RT			DG66VT		
使用级别 Use group	B	C	D	B	C	D
电压(V) Rated voltage	300	300	300	300	300	600
电流(A) Rated current	40	40	10	40	40	5
线径(AWG) Wire range	18-8/4			18-8		
耐电压 Withstanding voltage	AC1600V/1Min			AC1600V/1Min		
绝缘阻抗 Insulation resistance	500MΩ/DC500V			500MΩ/DC500V		
塑件 Housing	PA66+GF,UL94V-0			PA66,UL94V-0		
端子 Terminal	铜合金, 镀锡 Copper alloy, Tin plated			铜合金, 镀锡 Copper alloy, Tin plated		
螺丝 Screws	M4, 钢镀锌 Steel, Ni plated 1.7m/15Lb.In			M4, 钢镀锌 Steel, Ni plated 1.7m/15Lb.In		
使用温度 Ambient temperature	-40~105°C			-40~105°C		
极数 Poles	2-24			2-12		
产品尺寸图 Panel cutout						

间距 Pitch: 16.0mm



DG88



DG88RT

类别 Category	DG88			DG88RT		
使用级别 Use group	B	C	D	B	C	D
电压(V) Rated voltage	600	600	600	600	600	600
电流(A) Rated current	100	100	5	100	100	5
线径(AWG) Wire range	14-3			10-3		
耐电压 Withstanding voltage	AC2200V/1Min			AC2200V/1Min		
绝缘阻抗 Insulation resistance	500MΩ/DC500V			500MΩ/DC500V		
塑件 Housing	PA66,UL94V-0			PA66,UL94V-0		
端子 Terminal	铜合金, 镀锡 Copper alloy, Tin plated			铜合金, 镀锡 Copper alloy, Tin plated		
螺丝 Screws	M5, 钢镀锌 Steel, Ni plated 2.5m/22Lb.In			M5, 钢镀锌 Steel, Ni plated 2.5m/22Lb.In		
使用温度 Ambient temperature	-40~105°C			-40~105°C		
极数 Poles	2-20			2-12		
产品尺寸图 Panel cutout						

间距 Pitch: 14.5mm



DG1450-B



DG1450H-B



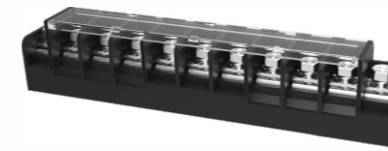
DG1450H-B-10A

类别 Category	DG1450-B			DG1450H-B			DG1450H-B-10A		
	B	C	D	B	C	D	B	C	D
使用级别 Use group	B	C	D	B	C	D	B	C	D
电压(V) Rated voltage	300	300	300	600	600	600	600	600	600
电流(A) Rated current	50	50	10	45	45	5	45	45	5
线径(AWG) Wire range	22-8			22-8			22-8		
耐电压 Withstanding voltage	AC1600V/1Min			AC2200V/1Min			AC2200V/1Min		
绝缘阻抗 Insulation resistance	500MΩ/DC500V			500MΩ/DC500V			500MΩ/DC500V		
塑件 Housing	PBT,UL94V-0			PBT,UL94V-0			PBT,UL94V-0		
端子 Terminal	铜合金, 镀锡 Copper alloy, Tin plated			铜合金, 镀锡 Copper alloy, Tin plated			铜合金, 镀锡 Copper alloy, Tin plated		
螺丝 Screws	M5, 钢镀锌 Steel, Zinc plated 2.0N.m/17.5Lb.In			M5, 钢镀锌 Steel, Zinc plated 2.0N.m/17.5Lb.In			M5, 钢镀锌 Steel, Zinc plated 2.0N.m/17.5Lb.In		
使用温度 Ambient temperature	-40~120°C			-40~120°C			-40~120°C		
极数 Poles	2-14			3-14			3-14		
产品尺寸图 Panel cutout									

间距 Pitch: 7.0mm



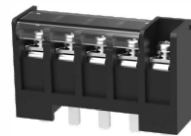
DG1700-B



DG1716-B

类别 Category	DG1700-B			DG1716-B		
	B	C	D	B	C	D
使用级别 Use group	B	C	D	B	C	D
电压(V) Rated voltage	600	600	600	600	600	600
电流(A) Rated current	65	65	5	80	80	5
线径(AWG) Wire range	22-6			26-4		
耐电压 Withstanding voltage	AC2200V/1Min			AC2200V/1Min		
绝缘阻抗 Insulation resistance	500MΩ/DC500V			500MΩ/DC500V		
塑件 Housing	PBT,UL94V-0			PBT,UL94V-0		
端子 Terminal	铜合金, 镀锡 Copper alloy, Tin plated			铜合金, 镀锡 Copper alloy, Tin plated		
螺丝 Screws	M6, 钢镀锌 Steel, Zinc plated 2.5N.m/22Lb.In			M6, 钢镀锌 Steel, Zinc plated 7.9N.m/70Lb.In		
使用温度 Ambient temperature	-40~120°C			-40~120°C		
极数 Poles	3-14			4-14		
产品尺寸图 Panel cutout						

间距 Pitch: 14.5mm



DG1450H-B-20A



DG1450H-B-30A



DG1450H-B-40A

类别 Category	DG1450H-B-20A			DG1450H-B-30A			DG1450H-B-40A		
	B	C	D	B	C	D	B	C	D
使用级别 Use group	B	C	D	B	C	D	B	C	D
电压(V) Rated voltage	600	600	600	600	600	600	600	600	600
电流(A) Rated current	57	57	5	45	45	5	45	45	5
线径(AWG) Wire range	22-8			22-8			22-8		
耐电压 Withstanding voltage	AC2200V/1Min			AC2200V/1Min			AC2200V/1Min		
绝缘阻抗 Insulation resistance	500MΩ/DC500V			500MΩ/DC500V			500MΩ/DC500V		
塑件 Housing	PBT,UL94V-0			PBT,UL94V-0			PBT,UL94V-0		
端子 Terminal	铜合金, 镀锡 Copper alloy, Tin plated			铜合金, 镀锡 Copper alloy, Tin plated			铜合金, 镀锡 Copper alloy, Tin plated		
螺丝 Screws	M5, 钢镀锌 Steel, Zinc plated 2.3N.m/20Lb.In			M5, 钢镀锌 Steel, Zinc plated 2.0N.m/17.5Lb.In			M5, 钢镀锌 Steel, Zinc plated 2.0N.m/17.5Lb.In		
使用温度 Ambient temperature	-40~120°C			-40~120°C			-40~120°C		
极数 Poles	3-14			3-14			2-14		
产品尺寸图 Panel cutout									

间距 Pitch: 20.0mm



DG2000-B



DG2000H-B

类别 Category	DG2000-B			DG2000H-B		
	B	C	D	B	C	D
使用级别 Use group	B	C	D	B	C	D
电压(V) Rated voltage	600	600	600	600	600	600
电流(A) Rated current	75	75	5	80	80	5
线径(AWG) Wire range	26-4			26-4		
耐电压 Withstanding voltage	AC2200V/1Min			AC2200V/1Min		
绝缘阻抗 Insulation resistance	500MΩ/DC500V			500MΩ/DC500V		
塑件 Housing	PBT,UL94V-0			PBT,UL94V-0		
端子 Terminal	铜合金, 镀锡 Copper alloy, Tin plated			铜合金, 镀锡 Copper alloy, Tin plated		
螺丝 Screws	M6, 钢镀锌 Steel, Ni plated 2.5N.m/22Lb.In			M6, 钢镀锌 Steel, Ni plated 2.9N.m/26Lb.In		
使用温度 Ambient temperature	-40~120°C			-40~120°C		
极数 Poles	2-12			2-12		
产品尺寸图 Panel cutout						

间距 Pitch:20.2mm

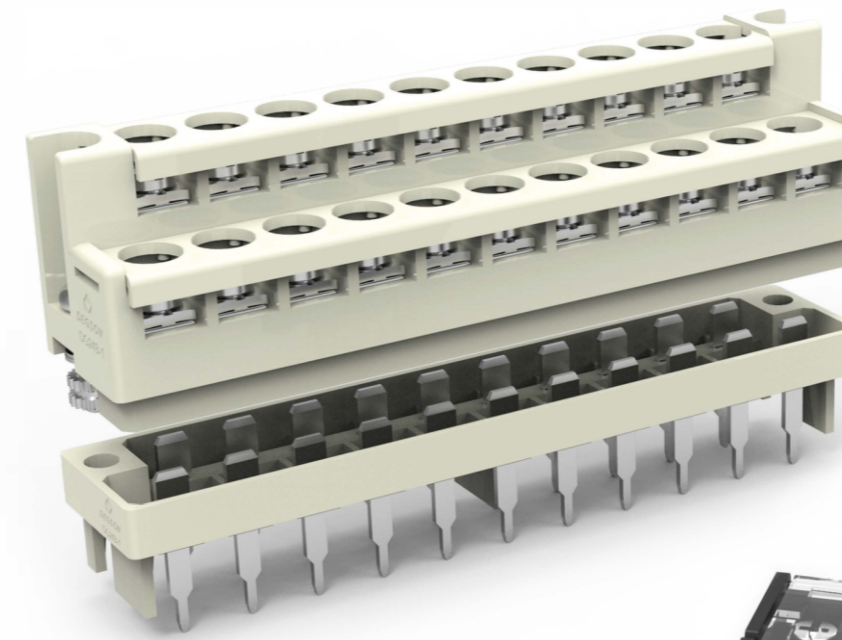


DG2020-B



DG2020-B-10A

类别 Category	DG2020-B			DG2020-B-10A		
使用级别 Use group	B	C	D	B	C	D
电压(V) Rated voltage	600	600	600	600	600	600
电流(A) Rated current	100	100	5	115	115	5
线径(AWG) Wire range	18-3			18-2		
耐电压 Withstanding voltage	AC2200V/1Min			AC2200V/1Min		
绝缘阻抗 Insulation resistance	500MΩ/DC500V			500MΩ/DC500V		
塑件 Housing	PBT,UL94V-0			PBT,UL94V-0		
端子 Terminal	铜合金, 镀锡 Copper alloy, Tin plated			铜合金, 镀锡 Copper alloy, Tin plated		
螺丝 Screws	M6, 钢镀锌 Steel, Zinc plated 7.9N.m/70Lb.In			M6, 钢镀锌 Steel, Zinc plated 7.9N.m/70Lb.In		
使用温度 Ambient temperature	-40~120°C			-40~120°C		
极数 Poles	11			11		
产品尺寸图 Panel cutout						

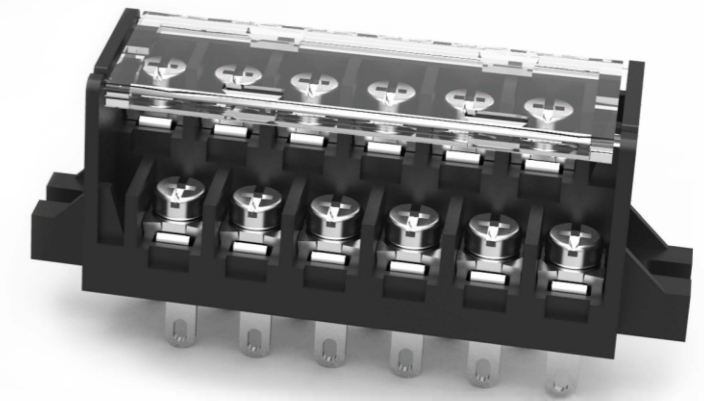


双层PCB-PLC端子

双层结构设计, 节省空间,
满足紧凑多接点的需求

Double level type

Double layer structure design
can save space and meet the
needs of compact multi-contact



间距 Pitch:23.5mm



DG2350



DG2350-50A

类别 Category	DG2350			DG2350-50A		
使用级别 Use group	B	C	D	B	C	D
电压(V) Rated voltage	600	600	600	600	600	600
电流(A) Rated current	120	120	5	120	120	5
线径(AWG) Wire range	2-1/0			2-1/0		
耐电压 Withstanding voltage	AC2200V/1Min			AC2200V/1Min		
绝缘阻抗 Insulation resistance	500MΩ/DC500V			500MΩ/DC500V		
塑件 Housing	PA66,UL94V-0			PA66,UL94V-0		
端子 Terminal	铜合金, 镀锡 Copper alloy, Tin plated			铜合金, 镀锡 Copper alloy, Tin plated		
螺丝 Screws	M8, 钢镀锌镍合金 Steel, Zinc-nickel plated 5.5N.m/48.8Lb.In			M8, 钢镀锌镍合金 Steel, Zinc-nickel plated 5.5N.m/48.8Lb.In		
使用温度 Ambient temperature	-40~120°C			-40~120°C		
极数 Poles	2-6			4		
产品尺寸图 Panel cutout						

产品特点

- ✓ 额定电流8~20A, 额定电压300V
- ✓ 栅栏式接线结构, 连接稳定可靠
- ✓ 多种增值服务: 印字、镀金、其他特殊要求
- ✓ 应用领域: 工控

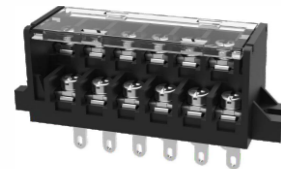
Feature

- ✓ Rated current: 8-20A, rated voltage: 300V
- ✓ Barrier wiring structure, stable and reliable connection
- ✓ Multiple value-added services: printing, gold plated, other special requirement
- ✓ Application: Industrial automation

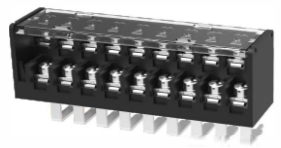
间距 Pitch:7.62mm



DG24-1



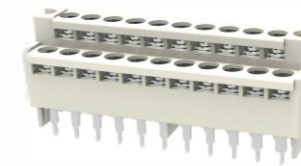
DG24-2



DG24-3

类别 Category	DG24-1			DG24-2			DG24-3		
	B	C	D	B	C	D	B	C	D
使用级别 Use group	B	C	D	B	C	D	B	C	D
电压(V) Rated voltage	300	-	300	300	-	300	300	-	300
电流(A) Rated current	15	-	10	15	-	10	15	-	10
线径(AWG) Wire range	22-14			22-14			22-14		
耐电压 Withstanding voltage	AC1600V/1Min			AC1600V/1Min			AC1600V/1Min		
绝缘阻抗 Insulation resistance	500MΩ/DC500V			500MΩ/DC500V			500MΩ/DC500V		
塑件 Housing	PA66,UL94V-0			PA66,UL94V-0			PA66,UL94V-0		
端子 Terminal	铜合金,镀锡 Copper alloy,Tin plated			铜合金,镀锡 Copper alloy,Tin plated			铜合金,镀锡 Copper alloy,Tin plated		
螺丝 Screws	M3,钢镀锌 Steel,Ni plated 0.5N.m/4.5Lb.In			M3,钢镀锌 Steel,Ni plated 0.5N.m/4.5Lb.In			M3,钢镀锌 Steel,Ni plated 0.5N.m/4.5Lb.In		
使用温度 Ambient temperature	-40~105°C			-40~105°C			-40~105°C		
极数 Poles	6-48(偶数poles)			8-48(偶数poles)			6-48(偶数poles)		
产品尺寸图 Panel cutout									

间距 Pitch:7.62mm



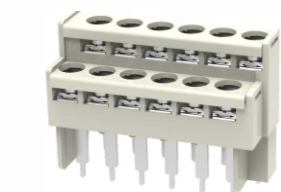
DG24B-1



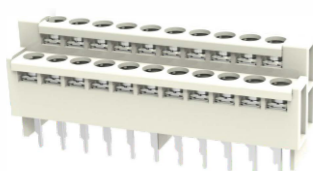
DG24B-2

类别 Category	DG24B-1			DG24B-2		
	B	C	D	B	C	D
使用级别 Use group	B	C	D	B	C	D
电压(V) Rated voltage	300	-	300	300	-	300
电流(A) Rated current	8	-	10	14	-	10
线径(AWG) Wire range	22-14			24-14		
耐电压 Withstanding voltage	AC1600V/1Min			AC1600V/1Min		
绝缘阻抗 Insulation resistance	500MΩ/DC500V			500MΩ/DC500V		
塑件 Housing	PBT,UL94V-0			PA66,UL94V-0		
端子 Terminal	铜合金,镀金 Copper alloy,Gold plated			铜合金,镀金 Copper alloy,Gold plated		
螺丝 Screws	M3,钢镀锌 Steel,Ni plated 1.5N.m/13.3Lb.In			M3,钢镀锌 Steel,Ni plated 0.5N.m/4.5Lb.In		
使用温度 Ambient temperature	-40~120°C			-40~105°C		
极数 Poles	5-49(奇数poles)			4-48(偶数poles)		
产品尺寸图 Panel cutout						

间距 Pitch:7.62mm



DG24-4



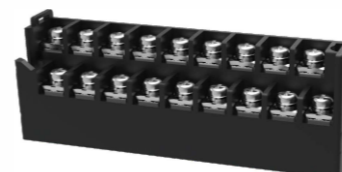
DG24-5

类别 Category	DG24-4			DG24-5		
	B	C	D	B	C	D
使用级别 Use group	B	C	D	B	C	D
电压(V) Rated voltage	300	-	300	300	-	-
电流(A) Rated current	8	-	10	8	-	-
线径(AWG) Wire range	22-14			22-14		
耐电压 Withstanding voltage	AC1600V/1Min			AC1600V/1Min		
绝缘阻抗 Insulation resistance	500MΩ/DC500V			500MΩ/DC500V		
塑件 Housing	PBT,UL94V-0			PBT,UL94V-0		
端子 Terminal	铜合金,镀锡 Copper alloy,Tin plated			铜合金,镀锡 Copper alloy,Tin plated		
螺丝 Screws	M3,钢镀锌 Steel,Ni plated 0.5N.m/4.5Lb.In			M3,钢镀锌 Steel,Ni plated 0.5N.m/4.5Lb.In		
使用温度 Ambient temperature	-40~120°C			-40~120°C		
极数 Poles	10-48(偶数poles)			19,21,29		
产品尺寸图 Panel cutout						

间距 Pitch:9.52mm/9.525mm



DG44-1



DG44B-1

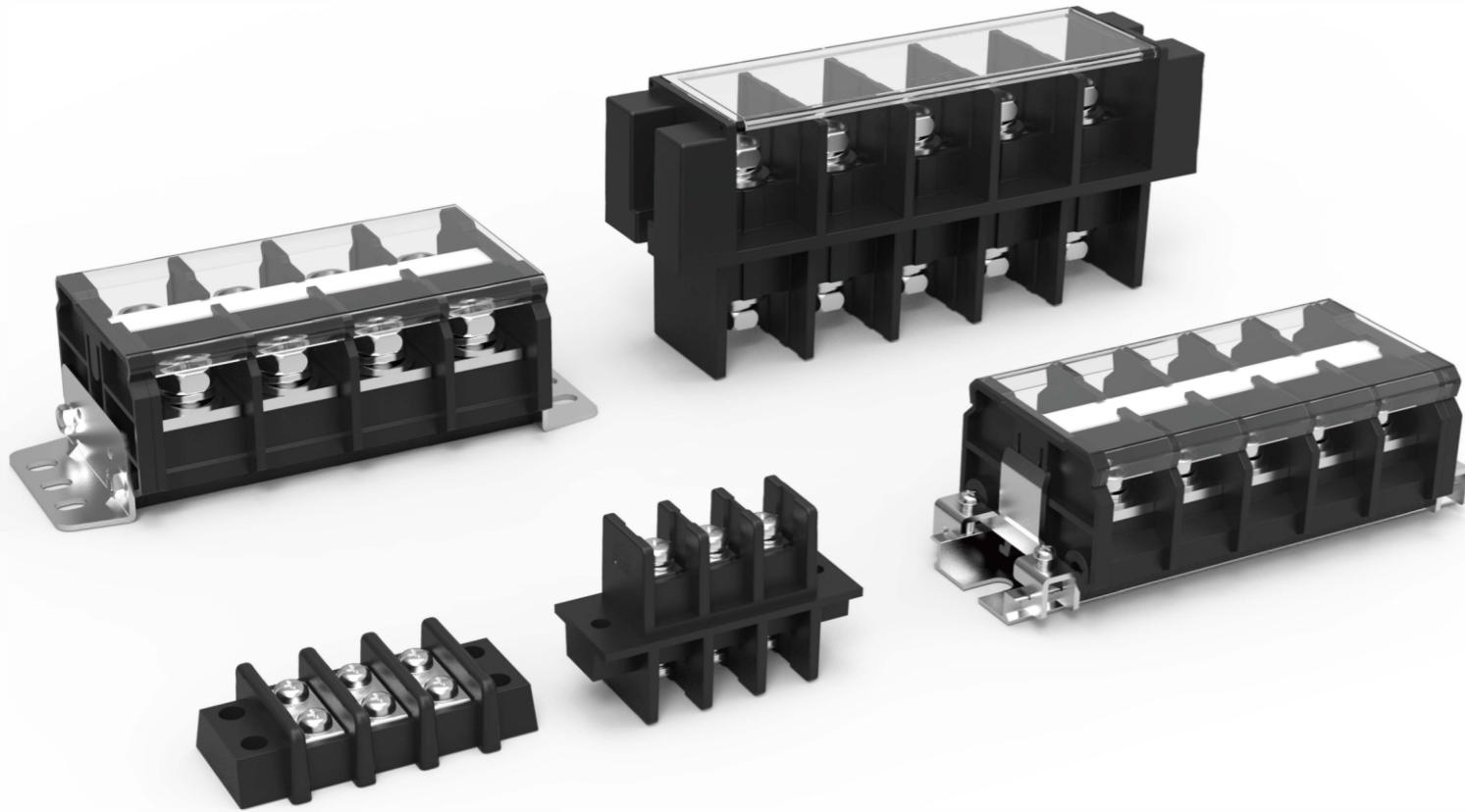
类别 Category	DG44-1			DG44B-1		
	B	C	D	B	C	D
使用级别 Use group	B	C	D	B	C	D
电压(V) Rated voltage	300	-	300	300	-	300
电流(A) Rated current	20	-	10	15	-	10
线径(AWG) Wire range	18-12			22-14		
耐电压 Withstanding voltage	AC1600V/1Min			AC1600V/1Min		
绝缘阻抗 Insulation resistance	500MΩ/DC500V			500MΩ/DC500V		
塑件 Housing	PBT,UL94V-0			PA66,UL94V-0		
端子 Terminal	铜合金,镀锡 Copper alloy,Tin plated			铜合金,镀金 Copper alloy,Gold plated		
螺丝 Screws	M3.5,钢镀锌 Steel,Zinc plated 1.4N.m/12.4Lb.In			M3.5,钢镀锌 Steel,Zinc plated 0.8N.m/7Lb.In		
使用温度 Ambient temperature	-40~120°C			-40~105°C		
极数 Poles	4-20			10-36		
产品尺寸图 Panel cutout						

栅栏转接端子

可用于设备间接线或控制柜上配电使用,满足大功率电力传输需求

Transfer type

Applicable to the wiring between devices or power distribution of control cabinet, meeting high power transmission requirements



产品特点

- ✓ 额定电流10~500A, 额定电压300-1000V
- ✓ 栅栏式接线结构, 连接稳定可靠
- ✓ 多种增值服务: 印字、其他特殊要求
- ✓ 应用领域: 工控、电力电源、新能源

Feature

- ✓ Rated current: 10-500A, rated voltage: 300-1000V
- ✓ Barrier wiring structure, stable and reliable connection
- ✓ Multiple value-added services: printing, other special requirement
- ✓ Application: Industrial automation, Electric power, New energy

额定电流 Rated current: 20A/25A/30A



DG49-A 间距 Pitch: 9.5mm



DG69-A 间距 Pitch: 11mm



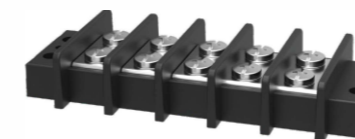
DG89-A 间距 Pitch: 14mm

类别 Category	DG49-A			DG69-A			DG89-A		
使用级别 Use group	B	C	D	B	C	D	B	C	D
电压(V) Rated voltage	300	150	300	300	300	300	300	300	300
电流(A) Rated current	20	20	10	25	25	10	30	30	5
线径(AWG) Wire range	22-12			22-12			22-10		
耐电压 Withstanding voltage	AC1600V/1Min			AC1600V/1Min			AC1600V/1Min		
绝缘阻抗 Insulation resistance	500MΩ/DC500V			500MΩ/DC500V			500MΩ/DC500V		
塑件 Housing	PC, UL94V-0			PC, UL94V-0			PC, UL94V-0		
端子 Terminal	铜合金, 镀锡 Copper alloy, Tin plated			铜合金, 镀锡 Copper alloy, Tin plated			铜合金, 镀锡 Copper alloy, Tin plated		
螺丝 Screws	M3.5, 钢镀锌 Steel, Ni plated 0.8N.m/7Lb.In			M3.5, 钢镀锌 Steel, Ni plated 0.8N.m/7Lb.In			M4, 钢镀锌 Steel, Ni plated 1.2N.m/10.5Lb.In		
使用温度 Ambient temperature	-40~125°C			-40~125°C			-40~125°C		
极数 Poles	2-24			2-26			2-18		
产品尺寸图 Panel cutout									

额定电流 Rated current: 30A/75A



DG98-A 间距 Pitch: 14.28mm



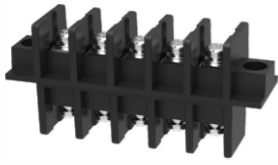
DG99-A 间距 Pitch: 14.75mm

类别 Category	DG98-A			DG99-A		
使用级别 Use group	B	C	D	B	C	D
电压(V) Rated voltage	600	600	600	600	600	600
电流(A) Rated current	30	30	5	75	75	5
线径(AWG) Wire range	20-10			14-4		
耐电压 Withstanding voltage	AC2200V/1Min			AC2200V/1Min		
绝缘阻抗 Insulation resistance	500MΩ/DC500V			500MΩ/DC500V		
塑件 Housing	PC, UL94V-0			PC, UL94V-0		
端子 Terminal	铜合金, 镀锡 Copper alloy, Tin plated			铜合金, 镀锡 Copper alloy, Tin plated		
螺丝 Screws	M4, 钢镀锌 Steel, Zinc plated 1.2N.m/10.5Lb.In			M5, 钢镀锌 Steel, Zinc plated 2.0N.m/17.5Lb.In		
使用温度 Ambient temperature	-40~125°C			-40~125°C		
极数 Poles	2-13			2-12		
产品尺寸图 Panel cutout						

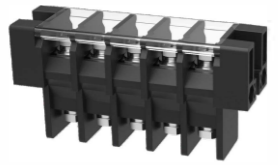
额定电流 Rated current: 30A/40A/75A



DG30-A 间距 Pitch: 13mm



DG40-A 间距 Pitch: 13mm



DG75-A 间距 Pitch: 16mm

类别 Category	DG30-A			DGR40-A			DGR75-A		
	B	C	D	B	C	D	B	C	D
使用级别 Use group	B	C	D	B	C	D	B	C	D
电压(V) Rated voltage	300	-	300	600	600	600	600	600	600
电流(A) Rated current	30	-	10	40	40	5	75	75	5
线径(AWG) Wire range	28-10			22-8			21-4		
耐电压 Withstanding voltage	AC1600V/1Min			AC2200V/1Min			AC2200V/1Min		
绝缘阻抗 Insulation resistance	500MΩ/DC500V			500MΩ/DC500V			500MΩ/DC500V		
塑件 Housing	PA66,UL94V-0			PA66+GF,UL94V-0			PBT,UL94V-0		
端子 Terminal	铜合金, 镀锡 Copper alloy, Tin plated			铜合金, 镀锡 Copper alloy, Tin plated			铜合金, 镀镍 Copper alloy, Ni plated		
螺丝 Screws	M4, 钢镀锌 Steel, Zinc plated 1.2N.m/10.5Lb.In			M4, 钢镀锌 Steel, Zinc plated 1.2N.m/10.5Lb.In			M6, 钢镀锌 Steel, Ni plated 5.0N.m/44.3Lb.In		
使用温度 Ambient temperature	-40~120°C			-40~120°C			-40~120°C		
极数 Poles	2-10			2-10			2-10		
产品尺寸图 Panel cutout									

额定电流 Rated current: 10A/20A/30A



DGR10 规格: 铝轨
Type: Al rail



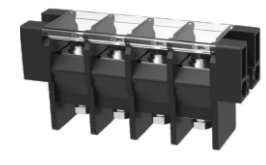
DGR20 规格: 铝轨
Type: Al rail



DGR30 规格: 铝轨
Type: Al rail

类别 Category	DGR10			DGR20			DGR30		
	B	C	D	B	C	D	B	C	D
使用级别 Use group	B	C	D	B	C	D	B	C	D
电压(V) Rated voltage	600	6000	600	600	600	600	600	600	600
电流(A) Rated current	10	10	5	20	20	5	30	30	5
线径(AWG) Wire range	24-16			24-12			20-10		
耐电压 Withstanding voltage	AC2200V/1Min			AC2200V/1Min			AC2200V/1Min		
绝缘阻抗 Insulation resistance	500MΩ/DC500V			500MΩ/DC500V			500MΩ/DC500V		
塑件 Housing	PC,UL94V-0			PC,UL94V-0			PC,UL94V-0		
端子 Terminal	铜合金, 镀镍 Copper alloy, Ni plated			铜合金, 镀镍 Copper alloy, Ni plated			铜合金, 镀镍 Copper alloy, Ni plated		
螺丝 Screws	M3, 钢镀锌 Steel, Zinc plated 0.5N.m/4.5Lb.In			M3.5, 钢镀锌 Steel, Zinc plated 0.8N.m/7Lb.In			M4, 钢镀锌 Steel, Ni plated 1.5N.m/12.6Lb.In		
使用温度 Ambient temperature	-40~125°C			-40~125°C			-40~125°C		
极数 Poles	1-21			1-16			1-16		
产品尺寸图 Panel cutout									

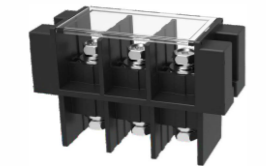
额定电流 Rated current: 115A/150A/200A



DG100-A 间距 Pitch: 21mm



DG150-A 间距 Pitch: 27mm



DG200-A 间距 Pitch: 27mm

类别 Category	DG100-A			DG150-A	DG200-A
	B	C	D	E	E
使用级别 Use group	B	C	D	E	E
电压(V) Rated voltage	600	600	600	1000	1000
电流(A) Rated current	115	115	5	150	200
线径(AWG) Wire range	10-2			6-1/0	6-3/0
耐电压 Withstanding voltage	AC2200V/1Min			AC3000V/1Min	AC3000V/1Min
绝缘阻抗 Insulation resistance	500MΩ/DC500V			500MΩ/DC500V	500MΩ/DC500V
塑件 Housing	PBT+GF,UL94V-0			PA66+GF,UL94V-0	PA66+GF,UL94V-0
端子 Terminal	铜合金, 镀镍 Copper alloy, Ni plated			铜合金, 镀镍 Copper alloy, Ni plated	铜合金, 镀镍 Copper alloy, Ni plated
螺丝 Screws	M6, 钢镀锌 Steel, Ni plated 5.0N.m/44.3Lb.In			M8, 钢镀锌 Steel, Zinc plated 6.0N.m/53Lb.In	M8, 钢镀锌 Steel, Zinc plated 6.0N.m/53Lb.In
使用温度 Ambient temperature	-40~120°C			-40~120°C	-40~120°C
极数 Poles	1-10			2-8	2-8
产品尺寸图 Panel cutout					

额定电流 Rated current: 60A/30A/130A



DGR40 规格: 铝轨
Type: Al rail



DGR60 规格: 钢轨, 面板
Type: Steel rail, Panel



DGR100 规格: 钢轨, 面板
Type: Steel rail, Panel

类别 Category	DGR40			DGR60			DGR100		
	B	C	D	B	C	D	B	C	D
使用级别 Use group	B	C	D	B	C	D	B	C	D
电压(V) Rated voltage	600	600	600	600	600	600	600	600	600
电流(A) Rated current	60	60	5	80	80	5	130	130	5
线径(AWG) Wire range	22-6			20-4			20-1		
耐电压 Withstanding voltage	AC2200V/1Min			AC2200V/1Min			AC2200V/1Min		
绝缘阻抗 Insulation resistance	500MΩ/DC500V			500MΩ/DC500V			500MΩ/DC500V		
塑件 Housing	PC,UL94V-0			PC,UL94V-0			PC,UL94V-0		
端子 Terminal	铜合金, 镀镍 Copper alloy, Ni plated			铜合金, 镀镍 Copper alloy, Ni plated			铜合金, 镀镍 Copper alloy, Ni plated		
螺丝 Screws	M5, 钢镀锌 Steel, Zinc plated 2.8N.m/25Lb.In			M6, 钢镀锌 Steel, Zinc plated 4.4N.m/40Lb.In			M8, 钢镀锌 Steel, Zinc plated 6.7N.m/60Lb.In		
使用温度 Ambient temperature	-40~125°C			-40~125°C			-40~125°C		
极数 Poles	1-16			1-16			1-16		
产品尺寸图 Panel cutout									

额定电流 Rated current: 155A/200A/240A



DGR150 规格: 钢轨, 面板
Type: Steel rail, Panel



DGR200 规格: 铝轨, 面板
Type: Al rail, Panel



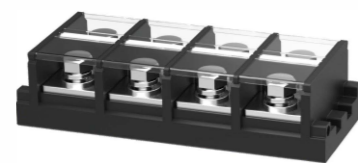
DGR240 规格: 铝轨
Type: Al rail

类别 Category	DGR150			DGR200			DGR240		
	B	C	D	B	C	D	B	C	D
使用级别 Use group	B	C	D	B	C	D	B	C	D
电压(V) Rated voltage	600	600	600	600	600	600	600	600	600
电流(A) Rated current	155	155	5	200	200	5	240	240	5
线径(AWG) Wire range	20-2/0			20-4/0			4-250Kcmil		
耐电压 Withstanding voltage	AC2200V/1Min			AC2200V/1Min			AC2200V/1Min		
绝缘阻抗 Insulation resistance	500MΩ/DC500V			500MΩ/DC500V			500MΩ/DC500V		
塑件 Housing	PC, UL94V-0			PC, UL94V-0			PC, UL94V-0		
端子 Terminal	铜合金, 镀镍 Copper alloy, Ni plated			铜合金, 镀镍 Copper alloy, Ni plated			铜合金, 镀镍 Copper alloy, Ni plated		
螺丝 Screws	M8, 钢镀锌 Steel, Zinc plated 4.5N.m/40Lb.In			M10, 钢镀锌 Steel, Zinc plated 9.0N.m/80Lb.In			M10, 钢镀锌 Steel, Zinc plated 4.0N.m/35.5Lb.In		
使用温度 Ambient temperature	-40~125°C			-40~125°C			-40~125°C		
极数 Poles	1-12			1-11			1-16		
产品尺寸图 Panel cutout									

额定电流 Rated current: 300A/500A



DGR300 规格: 钢轨, 面板
Type: Steel rail, Panel



DGR500 规格: 面板
Type: Panel

类别 Category	DGR300			DGR500		
	B	C	D	B	C	D
使用级别 Use group	B	C	D	B	C	D
电压(V) Rated voltage	600	600	600	600	600	300
电流(A) Rated current	300	300	5	500	500	5
线径(AWG) Wire range	20-300Kcmil			300-750Kcmil		
耐电压 Withstanding voltage	AC2200V/1Min			AC2200V/1Min		
绝缘阻抗 Insulation resistance	500MΩ/DC500V			500MΩ/DC500V		
塑件 Housing	PC, UL94V-0			PC, UL94V-0		
端子 Terminal	铜合金, 镀镍 Copper alloy, Ni plated			铜合金, 镀镍 Copper alloy, Ni plated		
螺丝 Screws	M10, 钢镀锌 Steel, Zinc plated 9.0N.m/80Lb.In			M16, 钢镀锌 Steel, Zinc plated 24.0N.m/213Lb.In		
使用温度 Ambient temperature	-40~125°C			-40~125°C		
极数 Poles	1-16			1-16		
产品尺寸图 Panel cutout						

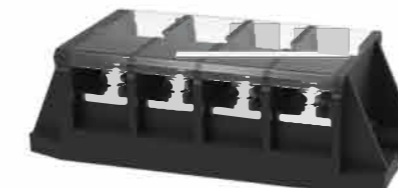
额定电流 Rated current: 130A



DGB40

类别 Category	DG78		
	B	C	D
使用级别 Use group	B	C	D
电压(V) Rated voltage	600	-	600
电流(A) Rated current	-	-	-
线径(AWG) Wire range	/		
耐电压 Withstanding voltage	AC2200V/1Min		
绝缘阻抗 Insulation resistance	500MΩ/DC500V		
塑件 Housing	PC, UL94V-0		
端子 Terminal	/		
螺丝 Screws	M12, 钢镀锌 Steel, Zinc plated 40N.m/354.2Lb.In		
使用温度 Ambient temperature	-40~125°C		
极数 Poles	2		
产品尺寸图 Panel cutout			

额定电流 Rated current: 130A



DGB100

类别 Category	DG78		
	B	C	D
使用级别 Use group	B	C	D
电压(V) Rated voltage	600	600	-
电流(A) Rated current	130	130	-
线径(AWG) Wire range	20-1		
耐电压 Withstanding voltage	AC2200V/1Min		
绝缘阻抗 Insulation resistance	500MΩ/DC500V		
塑件 Housing	PC, UL94V-0		
端子 Terminal	/		
螺丝 Screws	M8, 钢镀锌 Steel, Zinc plated 6.8N.m/60Lb.In		
使用温度 Ambient temperature	-40~125°C		
极数 Poles	2-11		
产品尺寸图 Panel cutout			

额定电流 Rated current: 60A



DG97-A

类别 Category	DG97-A		
使用级别 Use group	B	C	D
电压(V) Rated voltage	300	300	300
电流(A) Rated current	60	60	10
线径(AWG) Wire range	20-1		
耐电压 Withstanding voltage	AC1600V/1Min		
绝缘阻抗 Insulation resistance	500MΩ/DC500V		
塑件 Housing	PC,UL94V-0		
端子 Terminal	铜合金, 镀锡 Copper alloy, Tin plated		
螺丝 Screws	M6, 钢镀锌 Steel, Zinc plated 3.0N.m/26.6Lb.In		
使用温度 Ambient temperature	-40~80°C		
极数 Poles	12		
产品尺寸图 Panel cutout			

额定电流 Rated current: 130A



DG32-A

类别 Category	DG32-A		
使用级别 Use group	B	C	D
电压(V) Rated voltage	600	600	-
电流(A) Rated current	130	130	-
线径(AWG) Wire range	20-1		
耐电压 Withstanding voltage	AC2200V/1Min		
绝缘阻抗 Insulation resistance	500MΩ/DC500V		
塑件 Housing	PC,UL94V-0		
端子 Terminal	/		
螺丝 Screws	M8, 钢镀锌 Steel, Zinc plated 6.8N.m/60Lb.In		
使用温度 Ambient temperature	-40~125°C		
极数 Poles	2-11		
产品尺寸图 Panel cutout			

应用领域

DEGSON高松连接器广泛用于机器人、工业自动化、数控设备、纺织机械、轨道交通、监控设备、能源、通讯等各种需要电力、数据和信号连接的设备中。

FIELD OF APPLICATION

DEGSON connectors are widely used in robot, industrial automation, CNC equipment, textile machinery, rail transit, monitor and control unit, energy, communicate and so on various equipments requiring electrical, date and signal connection.



交通技术
Transportation technology



数控设备
CNC equipment



轨道交通
Rail transit



工业自动化
Industrial automation



能源
Energy



机器人
Robot



监控设备
Monitor and control unit



通讯
Communicate

