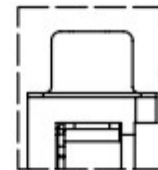
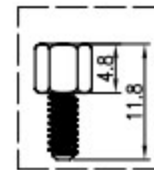


WITH SCREW TYPE



WITH RIVET TYPE



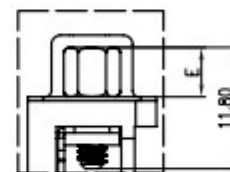
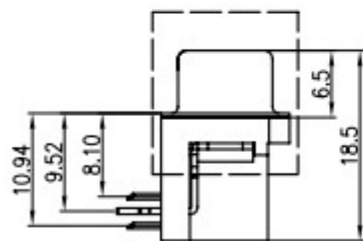
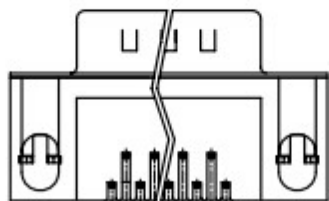
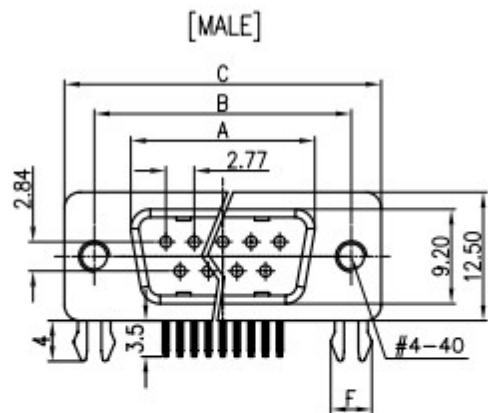
SCREWS

D-SUB RIGHT ANGLE(7.2mm) TYPE

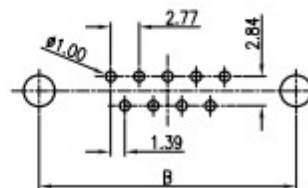
SERIES	DRB-09FA	DRB-09MA
	DRB-15FA	DRB-15MA
	DRB-25FA	DRB-25MA
	DRB-37FA	DRB-37MA

Dimension

Position	A±0.2	B±0.2	C±0.2	D
9	17.90	24.99	30.84	16.33
15	26.50	33.32	39.14	24.66
25	40.00	47.04	53.04	38.38
37	56.50	63.50	69.32	54.84



WITH SCREW AND RIVET TYPE



RECOMMEND PCB LAYOUT(TOLERANCE ±0.05)
(VIEW FROM TOP SIDE)

NOTES:

- PRODUCTS PERFORMANCE:
- 1.0 VOLTAGE RATING: 250V AC.
- 1.1 CONTACT CURRENT RATING: 1.5A MAX. PER PIN.
- 1.2 CONTACT RESISTANCE: 20mΩ MAX.
- 1.3 DIELECTRIC WITHSTANDING VOLTAGE: 500V AC(rms) FOR 1 MINUTE.
- 1.4 INSULATION RESISTANCE: 1000MΩ MINI.
- 1.5 OPERATING TEMPERATURE: -20°C~+70°C.