

## Data sheet

Commercial Art.No.: 73.710.0753.0

Male insert MIN STC 7 25

Male insert revos MiNI, 7-poles, crimp connection, rated current: 10A, rated voltage: 400V, with silver-plated contacts



Commercial Art.No.	73.710.0753.0
EAN	4015573230262
Order Unit	10

Certificates / Approvals



## Technical data

### General

Model	Pin insert
Inflammability class of insulation material acc. with UL94	V2
Color	Grey
Mating cycles	50
Pollution degree	3
Modular version	No
Operating temperature range min.	-40 °C
Operating temperature range max.	120 °C

### Connection Data

Connection type	Crimp
Number of poles	7
Plus switching contacts	0
Number of pole for rated current 2	0
Number of pole for rated current 3	0
Total number of poles (without ground contact)	7
With wire protection	No
Protective contact	yes

### Technical Data UL/CSA

Rated voltage according to UL/CSA	600 V
Rated current according CSA	10 A

Min. conductor cross section flexible wire	0.2 mm <sup>2</sup>
Max. conductor cross section flexible wire	1.5 mm <sup>2</sup>
Conductor cross section flexible AWG wire	24-16 AWG

**Model**

With housing	No
--------------	----

**Contacts**

Contact material	See contacts
Surface	See contacts
Contact resistance	≤ 4 mOhm
Wire strip length	4 mm

**Screws head design/recomm. Torque**

Mounting screws	M3/0.5-0.7 Nm Slot
-----------------	--------------------

**Technical Data DIN EN 61984**

Nominal voltage	250 V
Rated voltage face/ground	250 V
Nominal current	10 A
Rated impulse voltage	4 kV

**Classification**

ECLASS 11	
ECLASS 8.1	27440205
ETIM 7.0	EC000438
ETIM 6.0	EC000438
ETIM 5.0	EC000438
ETIM 4.0	EC000438
ETIM 3.0	EC000438

**Product compliance**

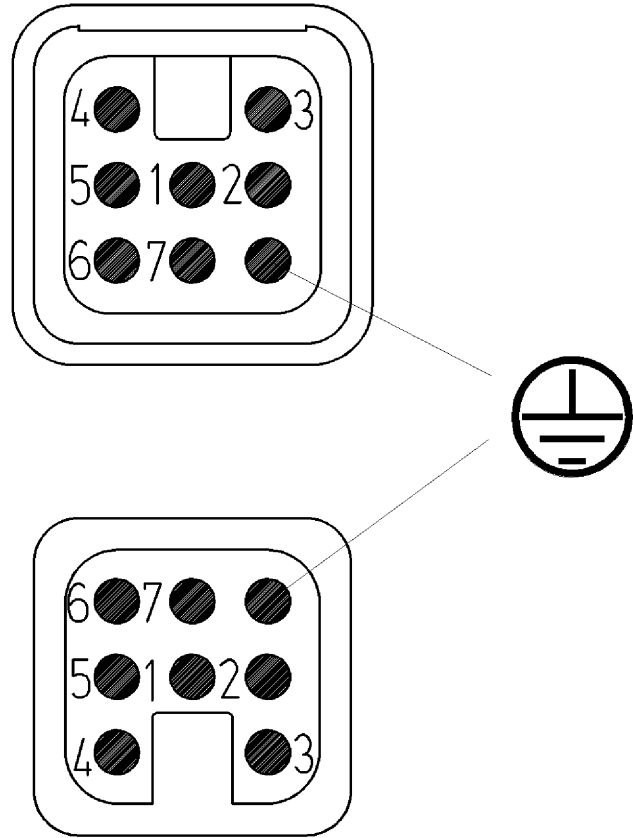
ROHS conformity status	Compliant
REACH-SVHC conformity status	Compliant

**Fits with**

Commercial Art.No.:	Article-type description:	Description:
76.350.0736.0	Hood MIN GOT GA 7 M20 25 Z0	Hood revos MINI made of zinc, ankled with cable gland M20 (IP54), low version
76.350.0736.1	Hood MIN GOT GA 7 M20 25 Z1	Hood revos MINI made of zinc, ankled with threaded hole M20, low version
76.352.0736.0	Hood MIN GOT GB 7 M20 25 Z0	Hood revos MINI made of zinc, straight with cable gland M20 (IP54), lowversion
76.352.0736.1	Hood MIN GOT GB 7 M20 25 Z1	Hood revos MINI made of zinc, straight with threaded hole M20, low version
76.362.0736.0	Hood MIN GOT GB7HM20 25 Z0	Hood revos MINI made of zinc, straight with cable gland M20 (IP54), high version

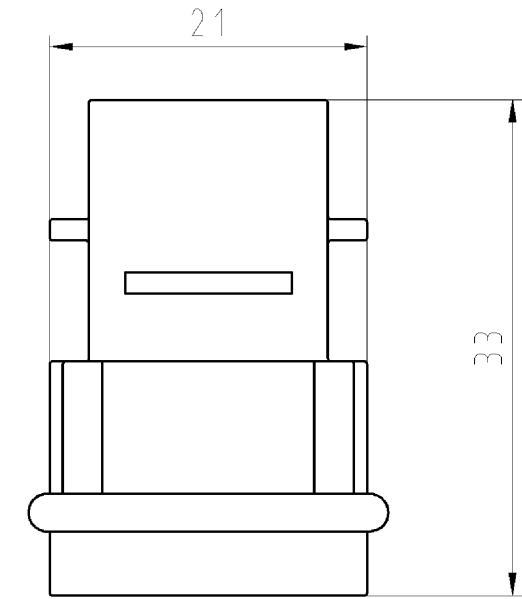
76.362.0736.1	Hood MIN GOT GB7HM20 25 Z0	Hood revos MINI made of zinc, straight with cable gland M20 (IP54), high version
76.362.0736.5	Hood MIN GOT GB7HM20 25 Z0	Hood revos MINI made of zinc, straight with cable gland M20 (IP54), high version
76.372.0736.0	Hood MIN GOT GC 7 M20 25 Z0	Hood revos MINI made of zinc, with EHV for cable connections with cable gland M20 (IP54), low version
76.372.0736.1	Hood MIN GOT GC 7 M20 25 Z1	Hood revos MINI made of zinc, with EHV for cable connections with threaded hole M20, low version
76.320.0729.0	Bottom MIN GUT GA 7 25 Z	Bottom-base revos MINI made of zinc, ankled, open, low version
76.321.0729.0	Bottom MIN GUT GB 7 25 Z	Bottom-base revos MINI made of zinc, ankled, open, low version
76.322.0736.0	Bottom MIN GUT GC 7 M20 25 Z0	Bottom-base revos MINI made of zinc, with EHV for cable connections with cable gland low version
76.322.0736.1	Bottom MIN GUT GC 7 M20 25 Z1	Bottom-base revos MINI made of zinc, with EHV for cable connections with threaded hole low version
76.350.0760.1	Hood MIN GOT GA 7 M20 25 P1	Hood revos MINI made of Plastik, ankled with threaded hole M20, low version
76.350.0760.5	Hood MIN GOT GA 7 M20 25 P5	Hood revos MINI made of Plastik, ankled with cable gland M20 (IP65), low version
76.352.0760.0	Hood MIN GOT GB 7 M20 25 P0	Hood revos MINI made of Plastik, straight with cable gland M20 (IP54), low version
76.352.0760.1	Hood MIN GOT GB 7 M20 25 P1	Hood revos MINI made of Plastik, straight with threaded hole M20, low version
76.352.0760.5	Hood MIN GOT GB 7 M20 25 P5	Hood revos MINI made of Plastik, straight with cable gland M20 (IP65), low version
76.372.0760.1	Hood MIN GOT GC 7 M20 25 P1	Hood revos MINI made of Plastik, with EHV for cable connections with threaded hole M20, low version
76.372.0760.5	Hood MIN GOT GC 7 M20 25 P5	Hood revos MINI made of Plastik, with EHV for cable connections with cable gland M20 (IP65), low version
76.320.0753.0	Bottom MIN GUT GA 7 25 P	Bottom-base revos MINI made of Plastik, ankled, open, low version
76.321.0753.0	Bottom MIN GUT GB 7 25 P	Bottom-base revos MINI made of Plastik, straight, open, low version
76.322.0760.5	Bottom MIN GUT GC 7 M20 25 P5	Bottom-base revos MINI made of Plastik, with EHV for cable connections with cable gland low version

Polbelegung / pole assignment  
 Steckerseite / plug side  
 Steckereinsatz / plug insert

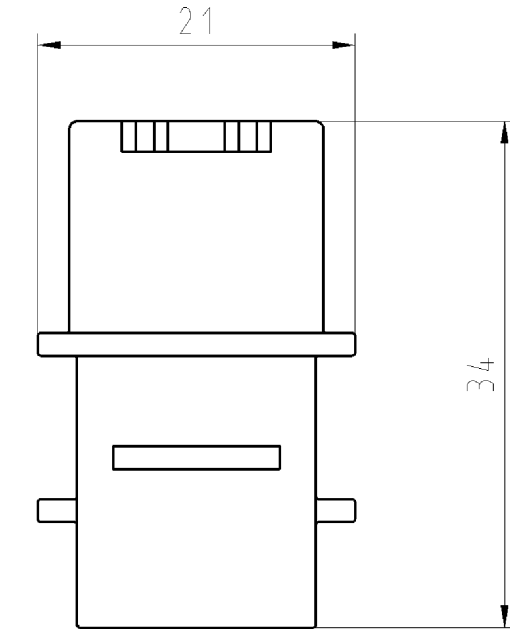


Polbelegung / pole assignment  
 Buchsenseite / socket side  
 Buchseneinsatz / socket insert

Steckereinsatz /  
 plug insert  
 73.710.0753.0



Buchseneinsatz /  
 socket insert  
 73.700.0753.0



These dimensions will be especially checked at delivery  
 Only inspection dimensions  
 With /E marked dimensions are only valid for internal use

Diese Maße werden bei Abnahme besonders geprüft  
 Ausschließlich Prüfmaße  
 Mit /E gekennzeichnete Maße sind nur für interne Zwecke gültig

Tolerierung nach DIN 7167/Tolerance system acc. to DIN 7167. [This DIN-standard describes the envelope principle. According to the envelope principle the deviations of form and parallelism are limited by the size tolerances].		ja/yes <input checked="" type="checkbox"/> Stoffverbots- und Deklarationsliste nach UU-TQM-05/03 ist einzuhalten. Conformity with Wieland document UU-TQM-05/03 (list of prohibited / declarable hazardous substances) to be declared!	
Freitoleranz nach General tolerance		CAD - Zeichnung, keine manuellen Änderungen CAD - drawing, no manual modifications allowed	1. Verwendung: - First Use:
Blatt: 1 von 1 Sheet: 1 of 1		Zeichnung Nr./Drawing No.	
Werkstoff/Material		2008 Tag/Date	Name
Maßstab/Scale		gezeichnet/drawn 24.06.	Schmitt J.
%		geprüft/checked	-
Vol. mm <sup>3</sup> Ofl./Surf. mm <sup>2</sup>		Normgepr. Stand. check	-
Ersatz für/Replacement for: -		Maße in mm/Dimensions are in mm	
wieland		Type	Benennung/Title
Elektrische Verbindungen		KONTAKTEINSATZ	
Änderung/Revision		Buchseneinsatz / Steckereinsatz Socket insert / Plug insert	

Weitergabe sowie Vervielfältigung dieses Dokuments, Verwertung und Mitteilung seines Inhalts sind verboten, soweit nicht ausdrücklich gestattet.  
 The reproduction, distribution and utilization of this document as well as the communication of its contents to others without express authorization is prohibited.

737000753001K\_4\_CADW1044\_Schmitt 2008-06-25T09:07:08 1.000