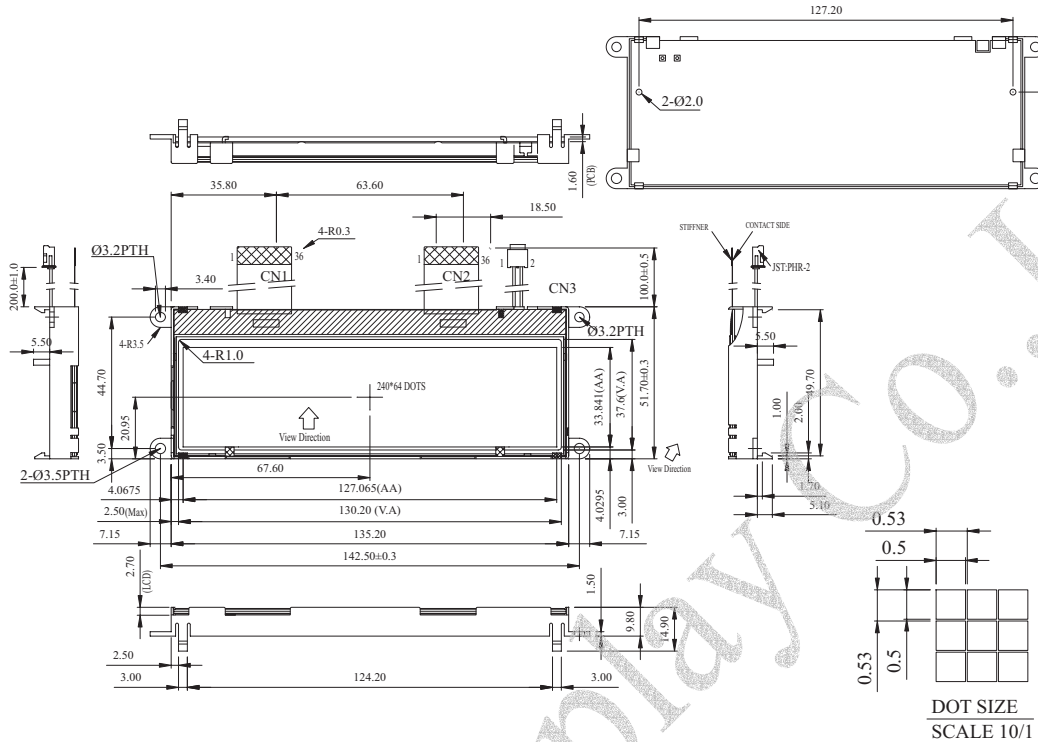




Dimension drawing



Graphic type

Feature

1. Built-in controller sitronix (ST7565P-F3)
2. +3.3V power supply only
3. 1/65 duty cycle

Mechanical Data

Item	Standard Value	Unit
Module Dimension	142.5x51.7	mm
Viewing Area	130.2x37.6	mm
Dot Size	0.5x0.5	mm
Dot Pitch	0.53x0.53	mm

Pin NO.	Symbol	Pin NO.	Symbol
1	NC	19	VDD
2	FR	20	VSS
3	CL	21	VOUT
4	/DOF	22	C3-
5	/CS1	23	C1+
6	/CS2	24	C1-
7	/RES	25	C2-
8	A0	26	C2+
9	/WR	27	V1
10	RD	28	V2
11	DB0	29	V3
12	DB1	30	V4
13	DB2	31	V5
14	DB3	32	VR
15	DB4	33	C86
16	DB5	34	P/S
17	DB6	35	NC
18	DB7	36	NC

Absolute Maximum Rating

Item	Symbol	Standard Value			Unit
		min.	typ.	max.	
Power Supply	VDD-VSS	-0.3	3.3	5.0	V
Input Voltage	VI	VSS	---	VDD	V

Note : VSS=0 Volt, VDD=5.0 Volt.

Electronical Characteristics

Item	Symbol	Condition	Standard Value			Unit
			min.	typ.	max.	
Input Voltage	VDD	---	3.0	3.3	3.6	V
Supply Current	IDD	VDD=3.3V	281	337	338	mA
Recommended LC Driving Voltage for Normal Temp. Version module	VDD-VO	-20°C	---	---	---	V
		0°C	---	---	---	
		25°C	9.3	10.0	10.7	
		50°C	---	---	---	
70°C	---	---	---	---	---	
LED Forward Voltage	VF	25°C	3.4	3.5	3.6	V
LED Forward Current	IF	25°C	80	101	150	mA