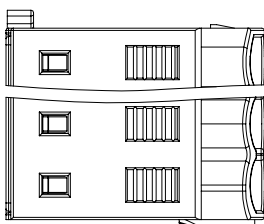
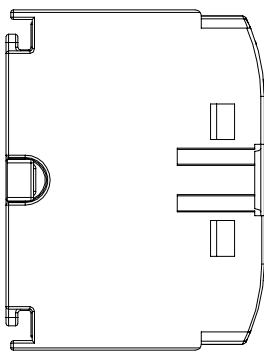
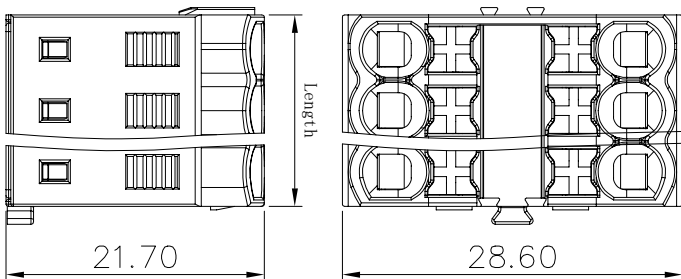


| REVISION RECORD | | | |
|-----------------|-----|-------------|------|
| REV | ECN | DESCRIPTION | DATE |
| | | | |
| | | | |

Connection method:
 1. For Solid wire, peeling wire in right length, push down the wire.
 2. For Stranded wire, peeling wire in right length, push down the key & fix the wire, or wire furredled and fix them.

| Order | Item No. & Color | Length |
|--------------|--------------------|--------|
| TPA2.5-6-XX | 412261004 (Grey) | 16.10 |
| | 412261005 (Orange) | |
| | 412261006 (Blue) | |
| TPA2.5-12-XX | 412261019 (Green) | 31.55 |
| | 412261007 (Grey) | |
| | 412261008 (Orange) | |
| TPA2.5-18-XX | 412261009 (Blue) | 47.00 |
| | 412261020 (Green) | |
| | 412261010 (Grey) | |
| | 412261011 (Orange) | |
| | 412261012 (Blue) | |



NOTES:

UL/CUL Standard

- Conductor cross section : 26~12AWG
- Rated Voltage/Current :

| Use group | B | C | D |
|------------------|-----|-----|---|
| Rated voltage(V) | 300 | 300 | |
| Rated current(A) | 20 | 20 | |

IEC Standard

- Conductor cross section :

| Wire range(Solid/Stranded) | 0.2-2.5mm ² |
|--|------------------------|
| Solid | 0.2-4mm ² |
| Stranded | 0.2-2.5mm ² |
| Stranded with ferrules | 0.2-2.5mm ² |
| Stranded with plastic sleeve | 0.2-2.5mm ² |
| Stranded with ferrules with plastic sleeve | 0.2-2.5mm ² |

- Rated Voltage/Current :

| Surge voltage category | III |
|-------------------------|-----|
| Pollution degree | 3 |
| Rated surge voltage(kV) | 6 |
| Rated voltage(V) | 450 |
| Rated current(A) | 24 |

Material:

| | | |
|-----------|-----------------|-----------|
| Insulator | PA66 | UL94 V-0 |
| Conductor | Copper alloy | Sn plated |
| Spring | Stainless steel | |
| Button | POM | |

General information:

- Dimension shall be interpreted per ASME Y14.5-2009
- Stripping length : 8-10mm
- Operating temperature: -40°C~+105°C
- RoHS Compliance
- Undimensioned Tolerances:

| Pitch | Range | In | Nominal Dimension | Range | mm |
|-------|-------|------|-------------------|-------|--------|
| Over | 6 | Over | 30 | Over | 0.1/10 |
| To | 10 | To | 60 | To | < |
| 6 | 10 | 24 | 30 | 60 | 100 |
| | | | 30 | 60 | 150 |
| | | | ±0.15 | ±0.20 | ±0.30 |
| | | | ±0.30 | ±0.50 | ±0.70 |
| | | | ±1.00 | ±1.30 | ±2° |

HOW TO ORDER:
 TPA2.5-XX-XX

Seres No. Color:
 GY: Grey
 BU: Blue
 OG: Orange
 GN: Green
 RD: Red
 BN: Brown

| 订货号 Order No. | TPA2.5-XX-XX | 名称 Name | TPA2.5系列接线端子 | 未注公差 Tolerance | 表面 Surface |
|------------------|-----------------|------------|-------------------|------------------------|---------------|
| 项目 Item | 签字 Signature | 日期 Date | 图号 Drawing No. | 版本号 Revision Number | VDI21 |
| 设计 Design | c.js | 01/08/20" | PRM001090 | M1 | 重量 Weight |
| 审核 Check | cw | 01/08/20" | 材料 Material | Notes | 比例 Scale |
| 工艺 Process | - | - | 物料号 Item No. | Table | 1:1 |
| 标准化 Unity | - | - | | | mm |
| 批准 Approve | 1w1 | 01/08/20" | | | |