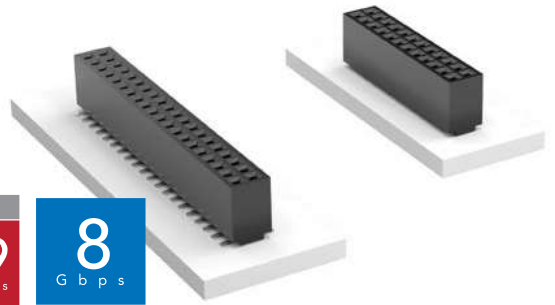


FLEXIBLE PIN COUNT TIGER EYE™ SOCKET

(1.27 mm) .050" PITCH • SFMC SERIES

MAX
2.9
A m p s

8
G b p s



SFMC
Board Mates:
TFM

Cable Mates:
FMTF, FFMD*

*Note: Standard FFMD callout will not mate with FLE, SFMC. Must use gold plated callouts. (See drawing on web.)

SFMC	1	NO. PINS PER ROW	LEAD STYLE	PLATING OPTION	D	OPTIONS
------	---	------------------	------------	----------------	---	---------

02 thru 50

-01, -03
= Through-hole

-L1, -L3
= Low Insertion Force Through-hole

-02
= Surface Mount

-L2
= Low Insertion Force Surface Mount

-T1
= Through-hole Tiger Eye™ LITE

-T2
= Surface Mount Tiger Eye™ LITE

-L
= 10 μ" (0.25 μm) Gold on contact, Matte Tin on tail

-K
= (4.00 mm) .157" DIA Polyimide film Pick & Place Pad (4 positions min.)

-P
= Plastic Pick & Place Pad (5 positions min.)

-TR
= Tape & Reel

-FR
= Full Reel Tape & Reel (must order max. quantity per reel; contact Samtec for quantity breaks)

SPECIFICATIONS

Insulator Material:
Black Liquid Crystal Polymer

Contact Material:
Tiger Eye™ = BeCu
Tiger Eye™ LITE = Phosphor Bronze

Plating:
Au or Sn over
50 μ" (1.27 μm) Ni

Current Rating:
2.9 A per pin
(2 pins powered)

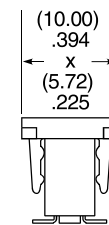
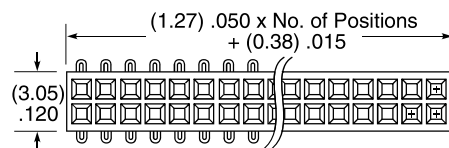
Voltage Rating:
220 VAC/310 VDC

Operating Temp Range:
-55 °C to +125 °C

Insertion Depth:
(3.05 mm) .120" to
(4.06 mm) .160"

Normal Force:
Standard = 132 g (1.29 N) avg.
LIF = 90 g (0.88 N) avg.

Max Cycles:
10,000 with 30 μ" (0.76 μm) Au

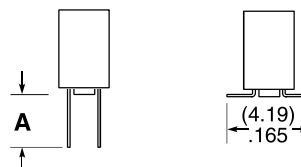
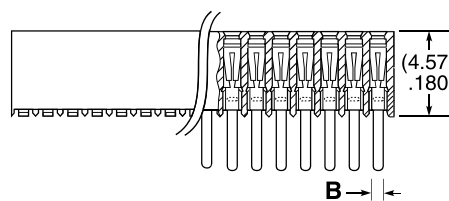


-P OPTION

PROCESSING

Lead-Free Solderable:
Yes

SMT Lead Coplanarity:
(0.10 mm) .004" max (02-26)
(0.15 mm) .006" max (27-50)*
*(.004" stencil solution may be available; contact IPG@samtec.com)



ALSO AVAILABLE

Other plating
(MOQ Required)

LEAD STYLE	A	B
-01, -L1, -T1	(3.05) .120	(0.51) .020
-03, -L3	(1.91) .075	(0.41) .016

Note:
Some lengths, styles and options are non-standard, non-returnable.

View complete specifications at: samtec.com?SFMC