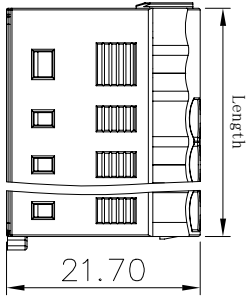
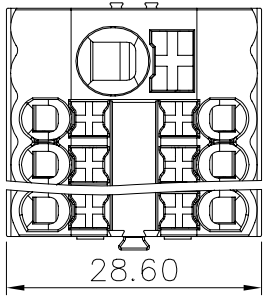


Transmittal, reproduction, dissemination and/or editing of this document as well as utilization of its contents and communication thereof to others without express authorization are prohibited.

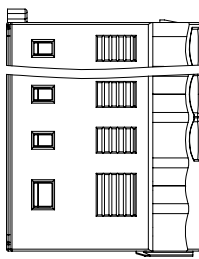
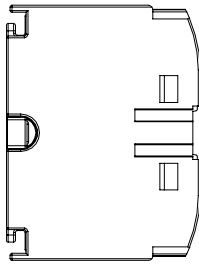
未经允许禁止传输、复制、编辑该文档，以及利用其内容进行交流

REVISION RECORD			
REV	ECN	DESCRIPTION	DATE

Connection method:
 1. For Solid wire, peeling wire in right length, push down the wire.
 2. For Stranded wire, peeling wire in right length, push down the key & fix the wire, or wire ferruled and fix them.



Order	Item No. & Color	Length
A	TPA6/2.5-7-XX 412261001 (Grey)	25.60
	412261002 (Orange)	
	412261003 (Blue)	
B	TPA6/2.5-13-XX 412261022 (Green)	41.05
	412261013 (Grey)	
	412261014 (Orange)	
C	TPA6/2.5-19-XX 412261015 (Blue)	56.50
	412261023 (Green)	
	412261016 (Grey)	



NOTES: (Input)
 UL/CUL Standard
 1. Conductor cross section : 20~8AWG
 2. Rated Voltage/Current :

Use group	B	C	D
Rated voltage(V)	300	300	
Rated current(A)	50	50	

IEC Standard
 1. Conductor cross section :

Wire range(Solid/Stranded)	0.5-6mm ²	0.5-10mm ²	0.5-6mm ²	0.5-6mm ²
Solid				
Stranded				
Stranded with ferrules without plastic sleeve			0.5-6mm ²	
Stranded with ferrules with plastic sleeve			0.5-6mm ²	

2. Rated Voltage/Current :

Surge voltage category	III
Pollution degree	3
Rated surge voltage(kV)	6
Rated voltage(V)	450
Rated current(A)	41

NOTES: (Output)
 UL/CUL Standard
 1. Conductor cross section : 26~12AWG
 2. Rated Voltage/Current :

Use group	B	C	D
Rated voltage(V)	300	300	
Rated current(A)	20	20	

IEC Standard
 1. Conductor cross section :

Wire range(Solid/Stranded)	0.2-2.5mm ²	0.2-4mm ²	0.2-2.5mm ²	0.2-2.5mm ²
Solid				
Stranded				
Stranded with ferrules without plastic sleeve			0.2-2.5mm ²	
Stranded with ferrules with plastic sleeve			0.2-2.5mm ²	

2. Rated Voltage/Current :

Surge voltage category	III
Pollution degree	3
Rated surge voltage(kV)	6
Rated voltage(V)	450
Rated current(A)	24

Material:

Insulator	PA66	UL94 V-0
Conductor	Copper alloy	Sn plated
Spring	Stainless steel	
Button	POM	

General information:
 1. Dimension shall be interpreted per ASME Y14.5-2009
 2. Stripping length : input10-12mm output8-10mm
 3. Operating temperature: -40°C~+105°C
 4. ROHS Compliance
 5. Undimensioned Tolerances:

Pitch Range in mm	Over	Over	Over	Over	Over	Over	Over	Over	Over
6	10	10	30	60	100	150	0.1/0		
TO	TO	TO	TO	TO	TO	TO	<		
6	10	24	30	60	100	150			
±0.15	±0.20	±0.30	±0.30	±0.50	±0.70	±1.00	±1.30	±2°	

HOW TO ORDER:
 TPA6/2.5-XX-XX
 Series No. Color:
 GY: Grey
 BU: Blue
 OG: Orange
 GN: Green
 RD: Red
 BK: Black
 TE: Yellow
 BN: Brown

订货号 Order No.	TPA6/2.5-XX-XX	名称 Name	TPA2.5系列 带电源输入接线端子	未注公差 Tolerance	表面 Surface
项目 Item	签字 Signature	图号 Drawing No.	PRM001093	版本号 Revision Number	VDI21
设计 Design	日期 Date	材料 Material	Notes	重量 Weight	比例 Scale
审核 Check	01/08/20"			/	1:1
工艺 Process	-	物料号 Item No.	Table		mm
标准化 Unity	-				
批准 Approve	1w1				
	01/08/20"				

原图号 Old Draw. No.	
底图总号 Assembly No.	

借用件登记 Common Part	
----------------------	--

1	2	3	4	5	6	7	8
---	---	---	---	---	---	---	---