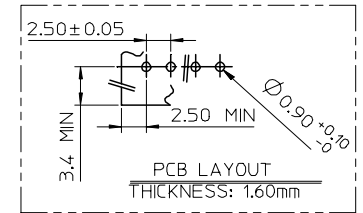
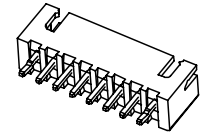
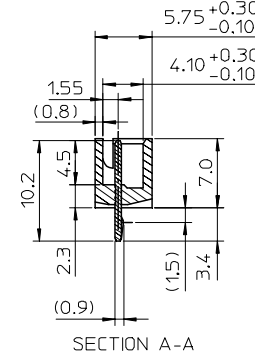
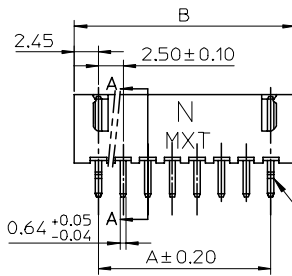
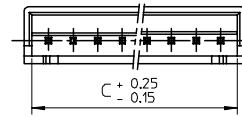
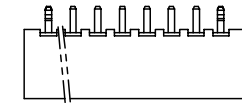


2 PIN ASSEMBLY

- NOTE:
- MATERIAL: HOUSING: NYLON, UL94 V-0, COLOR: SEE TABLE CONTACT: BRASS
 - FINISH:
 - 2 MICROMETER (MIN.) NICKLE UNDERPLATE ALL OVER
 - 2~3 MICROMETER TIN PLATING ALL OVER.
 - SPECIFICATIONS:
 - CURRENT RATINGS: 250 V DC/AC, 3.0 A.
 - DIELECTRIC WITHSTANDING STRENGTH: 1000 V AC FOR 1 MIN.
 - PACKAGE: REFER TO PK-48152-001.
 - PRODUCT SPEC: REFER TO PS-48152-001.
 - TEST SUMMARY: REFER TO TS-48152-001
 - ASSEMBLY WITH TERMINAL 48150 OR 48149 SERIES
 - MATE WITH HOUSING 48151 SERIES
 - HEADER PIN NO. 2~8 PIN W/O CORE OUT.
 - HEADER PIN NO. 9~16 PIN W/ CORE OUT
 - LEAD FREE AND ROHS COMPLIANCE.



VOID PIN NO. IS MARKED IN THE TABLE.

ADD 48152-2722 EC NO: SH2007-0085 DRW: EKA001 CHKD: 2006/09/06 APPR: WMSCHANG 2006/09/06	DESCRIPTION REV	QUALITY SYMBOLS	GENERAL TOLERANCES (UNLESS SPECIFIED)	DIMENSION STYLE	SCALE	DESIGN UNITS	THIRD ANGLE PROJECTION															
		$\nabla=0$ $\triangle=0$	<table border="1"> <tr> <th></th> <th>mm</th> <th>INCH</th> </tr> <tr> <td>4 PLACES</td> <td>±---</td> <td>±---</td> </tr> <tr> <td>3 PLACES</td> <td>±---</td> <td>±---</td> </tr> <tr> <td>2 PLACES</td> <td>±0.25</td> <td>±---</td> </tr> <tr> <td>1 PLACE</td> <td>±0.25</td> <td>±---</td> </tr> </table>		mm	INCH	4 PLACES	±---	±---	3 PLACES	±---	±---	2 PLACES	±0.25	±---	1 PLACE	±0.25	±---	MM ONLY	1:1	METRIC	
			mm	INCH																		
		4 PLACES	±---	±---																		
3 PLACES	±---	±---																				
2 PLACES	±0.25	±---																				
1 PLACE	±0.25	±---																				
	ANGULAR ± 3°																					
		DRAFT WHERE APPLICABLE MUST REMAIN WITHIN DIMENSIONS	SEE TABLE																			

