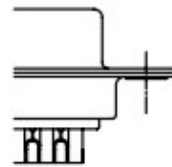
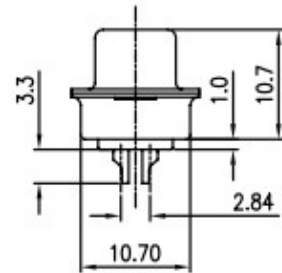
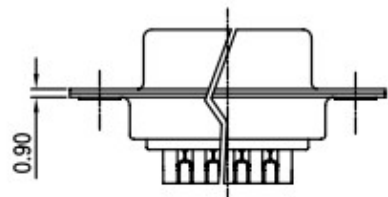
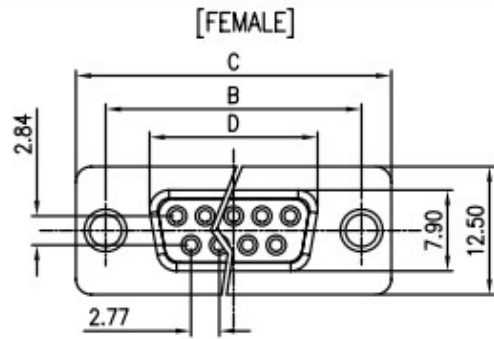
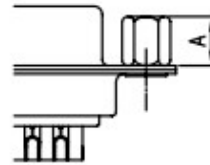


D-SUB SOLDER TYPE

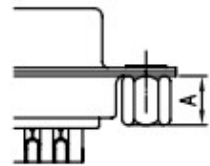
SERIES DB-15F, DB-15M, DB-25F, DB-25M, DB-37F, DB-37M, DB-50M, DB-9, DB-9M



Standard



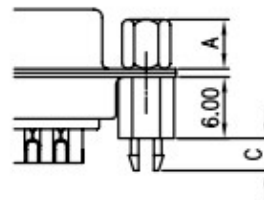
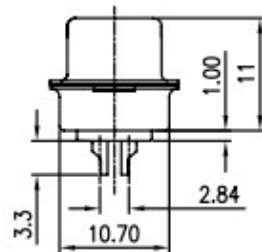
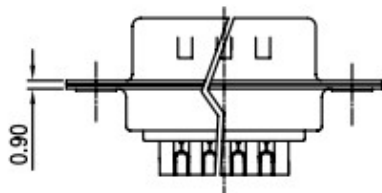
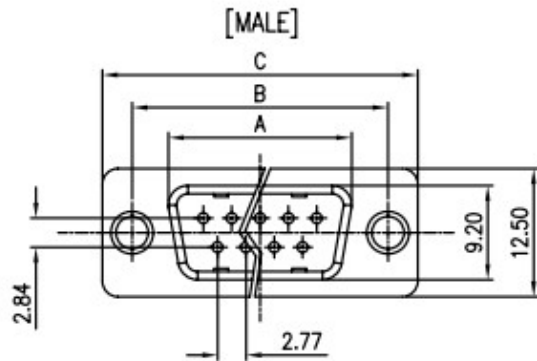
CC TYPE



CS TYPE

Dimension

Position	A±0.2	B±0.2	C±0.3	D
9	17.90	24.99	30.80	16.33
15	26.50	33.32	39.14	24.66
25	40.00	47.04	53.04	38.38
37	56.50	63.50	69.32	54.84



BRJ TYPE:

NOTES:

1. ELECTRICAL CHARACTERISTICS:

1.1 CONTACT RESISTANCE: 20mΩ Max. INITIAL.

1.2 DIELECTRIC WITHSTANDING VOLTAGE: 500V AC(rms) FOR 1 MINUTE.

1.3 INSULATION RESISTANCE: 1000MΩ Min.

2. ENVIRONMENT CHARACTERISTICS:

2.1 OPERATING TEMPERATURE: 0°C~+85°C.

2.2 STORAGE TEMPERATURE: -20°C~+70°C.