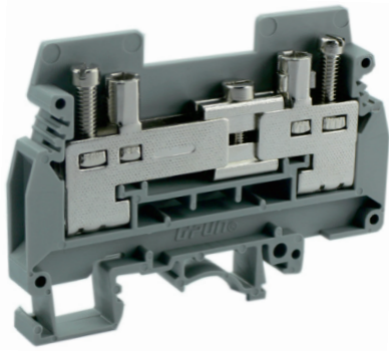


Screw clamping terminal block-UKJ-6S-011020





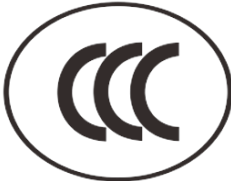

Screw clamping terminal block , rated voltage:660V , Max. operating current:57A, connection method : screw connection , number of connections : 2 , crimping range : 0.5mm² -10mm² , thickness:8.2mm , height:51mm , color : grey , mounting type : TH35-7.5、 TH35-15、 G32-15、 G32-18

Product parameter

| Parameter | Data |
|---------------------------------------|----------------------------|
| Packing unit (PCS) | 60 |
| NW per piece(g) | 2.09 |
| Layers | 1 |
| Number of connections | 2 |
| Rated cross section(mm ²) | 10 |
| Color | grey |
| Insulation material | PA |
| Flame retardant grade (UL94) | V0 |
| Rated voltage(V) | 660 |
| Rated current(A) | 57 |
| Temperature of insulation material | -40 ~ +125 |
| Wire feed | Both sides of the terminal |

Product certification

| Parameter | Data |
|--------------------|--|
| Certification logo |  |
| Certification logo |  |
| Certification logo | |

| Parameter | Data |
|--------------------|--|
| |  |
| Certification logo | IECEX |
| Certification logo | cRU[®] US |
| Certification logo |  |
| Certification logo | RoHS |

Technical data

| Parameter | Data |
|---|------------------|
| Connection Method | Screw connection |
| Screw thread | M4 |
| Stripping length(mm) | 13 |
| Tightening torque | 1.5-1.8 |
| Solid conductors(mm ²) | 0.5-10 |
| Stranded conductors(mm ²) | 0.5-6 |
| Operating temperature () | -40 ~ +105 |
| Ambient temperature (storage/transportation) () | -25 ~ +60 |
| Relative humidity | 30% ~ 90% |
| Connection in acc. with standard | IEC 60947-7-1 |

Dimension

| Parameter | Data |
|-----------|------|
| Width(mm) | 72.8 |
| | |

| Parameter | Data |
|---------------|------|
| Thickness(mm) | 8.2 |
| Height(mm) | 51 |