

REV	Revision records	Drawing/Date	Audit/Date
A	New issue	Yu Chao/25 Aug 2014	
B	dimension of ①②③ change against the real product	Ku Zhwei/15 Oct 2015	

Material charactericts

Plastic part: PA66 94V-2
 Hardare: Stainless steel

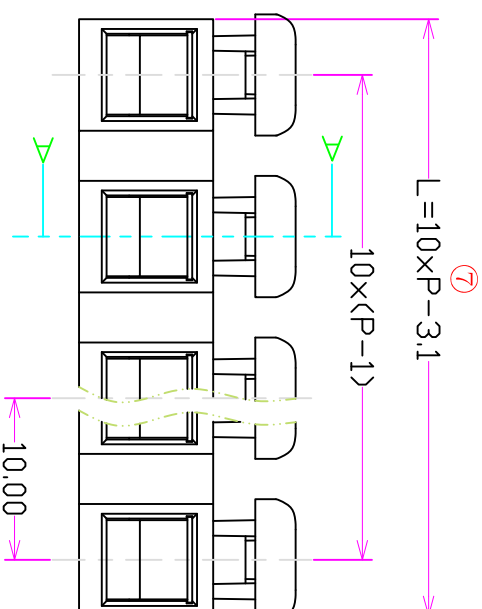
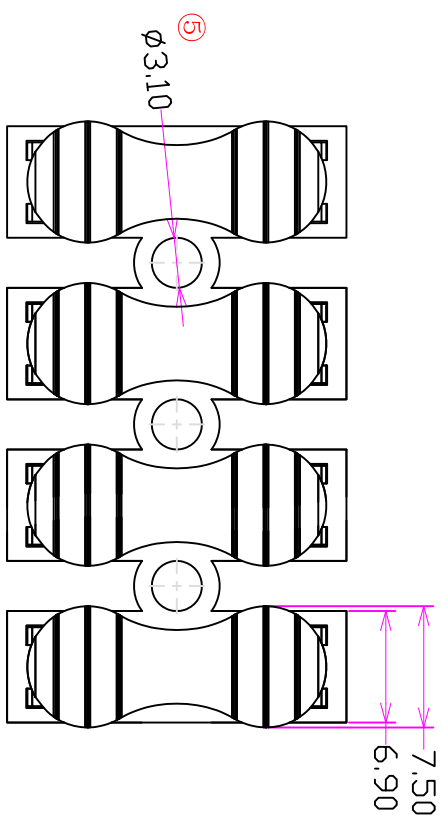
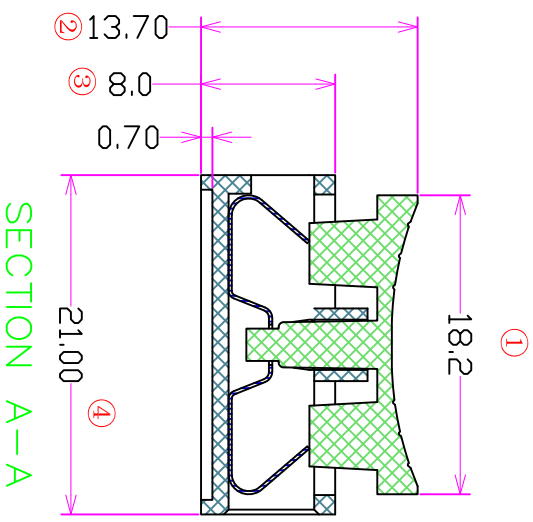
Mechanical properties

Temperature range: 105°C
 Trim length: 7~8mm

Technical parameters

Rated Voltage: 450v
 Rated Current: 16A
 Wire size: 2.5mm²

Technical requirement
 the dimension with 'O' is the quality control.



DIM	P	2	3	4	5	6	7	8	9	10	11	12
L	16.9	26.9	36.9	46.9	56.9	66.9	76.9	86.9	96.9	106.9	116.9	
TOL(+)	0.1	0.13	0.16	0.2	0.23	0.26	0.3	0.33	0.36	0.4	0.45	

Without individual tolerance reference	Drawing Dimension	Product Dimension	Part Dimension
0.5~3	3~6	M	M
±0.08	±0.15	±0.20	±0.30

Item No.	Type	Feed Through Terminal Block
CM-11-X-XXP		

