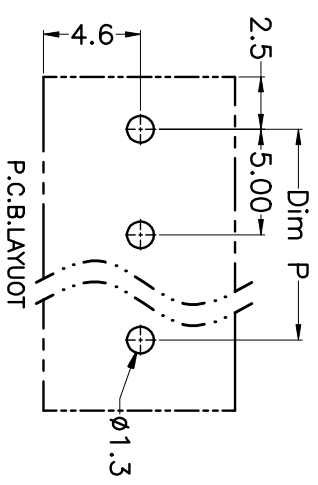
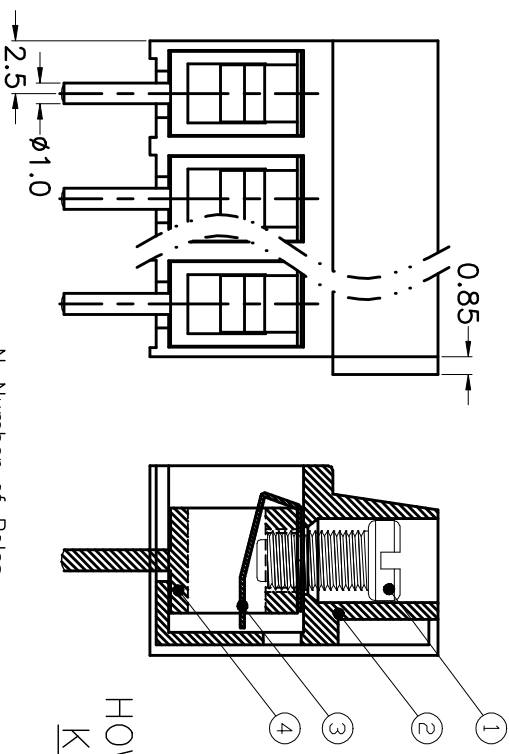
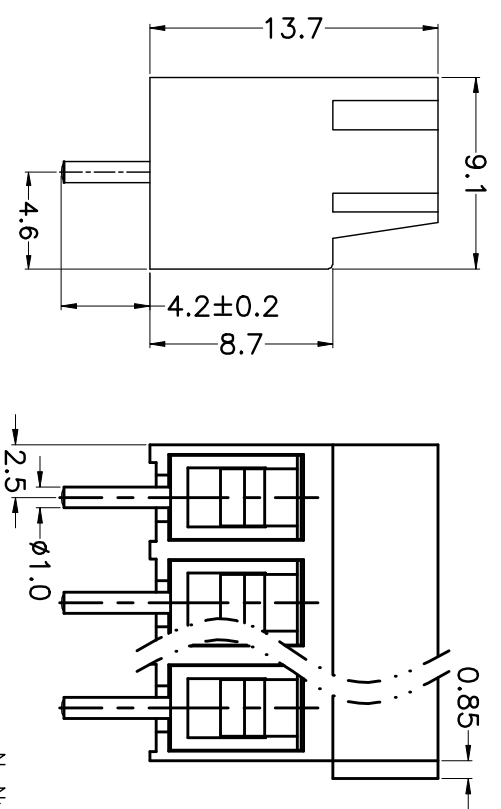
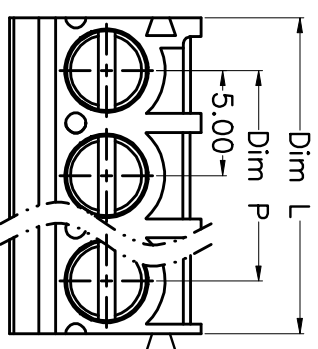


REV.	DESCRIPTION	DATE	DRAWN	APPROVED
A1	DWG.REL	2016/10/7	FANG	YANG



N=Number of Poles  
 Dim P=(N-1)x5.00  
 Dim L=Nx5.00

Poles	Dim P	Dim L
2-6P	±0.10	±0.15
7-12P	±0.20	±0.20
13-18P	±0.25	±0.30
19-24P	±0.30	±0.40

GENERAL TOLERANCE		ANGLE TOLERANCE	
X. ±0.5	X. ±0.3	X. ±5°	X. ±3°
.XX ±0.1	.XX ±0.1	.XX ±1°	
DRAWING TYPE CUSTOMER		SCALE	
1:1		SHEET 1 OF 1	
DRAWING NO. XP0012016-xxxx			

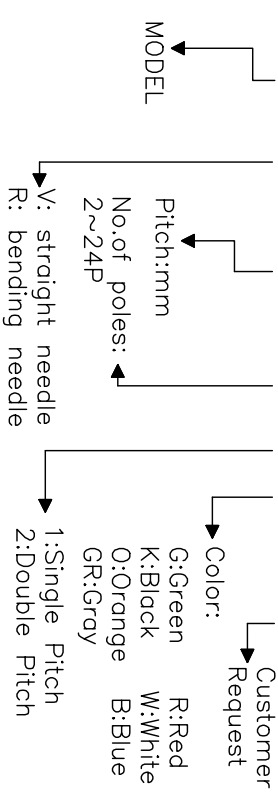
- Material
  - ØScrews : M3.0 steel, Zinc plated,
  - “-” slot type
  - ØHousing : PA66, UL94V-0
  - ØReed : Phosphor bronze, Ni plated or stainless steel
  - ØPin header : Brass, Tin plated

- Electrical
  - UL IEC
  - Rated voltage : 300V 250V
  - Rated current : 12A 25A
  - Insulation resistance: 500MΩ/DC500V
  - Withstanding Voltage : AC2000V/1min
  - Wire range: 22-14AWG 2.5mm<sup>2</sup>

- Mechanical
  - Operating temperature: -40°C~+105°C
  - Soldering temperature: 250°C±5/5sec
  - Torque: 0.5N.m (4.43lb.in)
  - Strip length: 4.5-5mm

### HOW TO ORDER

KF306 V -5.0-XXP-1 X-XXXXX



PROJECTION	TITLE
UNITS mm	KF306V-5.0-XXP
SHEET SIZE A4	SERIES KF306V

**KF 慈溪市凯峰电子有限公司**  
 KAIFENG ELECTRONIC CIXI KAIFENG ELECTRONIC CO.,LTD