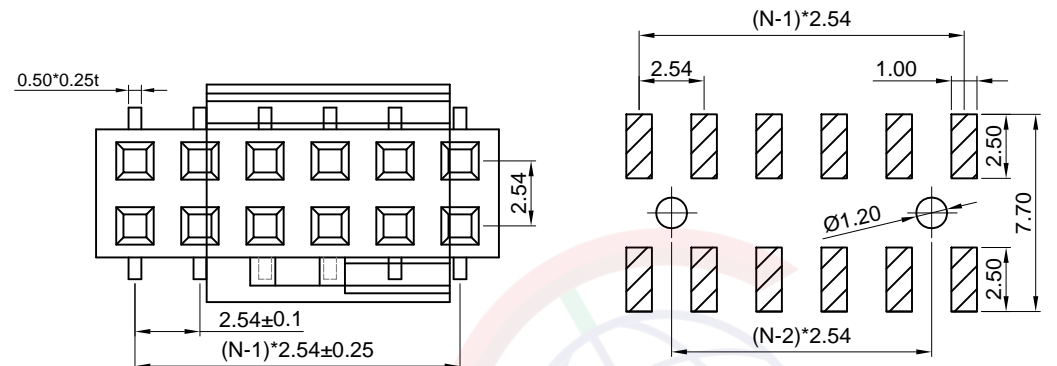
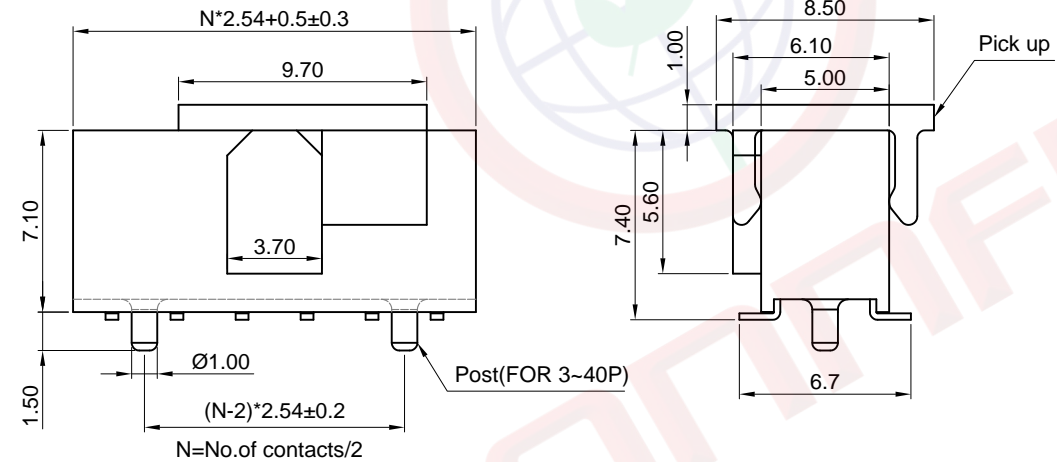


The information provided herein is from CONNELY Electronic Co., Ltd. and is confidential. Any disclosure to a party other than the recipient is prohibited. The intellectual properties and its rights contained herein, including but not limited to, trademarks, patents, copyrights, trade secrets, and technical know-how, are owned exclusively by CONNELY or its affiliates. Unauthorized use or reproduction of any part of this document without the prior written permission of CONNELY may result in legal action. CONNELY may enforce its intellectual property rights at its own discretion, failures or delays to exercise such rights does not constitute a waiver of such rights.

REV.	DESCRIPTION	DRAWN	CHECKED	APPROVED
A	NEW RELEASE	ych 01/24/08'		LJC 01/24/08'
C	DRAWING UPDATE	JLZ 01/05/19'		



Recommend PCB layout
(Tolerance:±0.05)



Notes:

Specifications:

1. Contact Resistance: 20mΩ Max.
2. Insulation Resistance: 1000MΩ Min.
3. Dielectric Withstanding Voltage: 600V AC(rms) For 1 Minute.
4. Current Rating:3A.
5. Temperature: -40°C~+105°C.

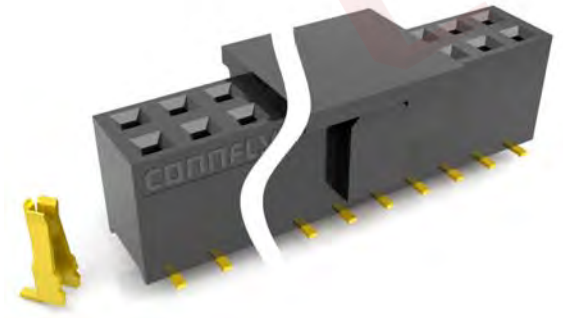
Materials:

1. Contact Material: Copper Alloy.
2. Contact Plating: Gold Plating Over Nickel.
3. Insulator Materials: High Temp,Black,UL94-V0.

Product Number Code:

DS1023-17 - X X X X X X

- Post support
S:W/ Post
X:W/O Post
- Packing type
R:Tape on reel
B:Tube
T:Tray
- Pick up support
S:W/ Pick up
X:W/O Pick up
- Contact plating
8: Full gold flash
- Housing color
B:Black
- No.of contacts
2x2-2x40



(Series Image-Reference Only)

GENERAL TOLERANCE		ANGLE TOLERANCE	
X.	±0.60	X.	±5°
.X	±0.38	.X	±3°
.XX	±0.25	.XX	±2°

DRAWING TYPE	CUSTOMER		
SCALE	1:1	SHEET	1 OF 1
DRAWING NO.	C-DS1023-17-XXXXXX-C		

PROJECTION	TITLE
	FEMALE HEADER PITCH 2.54mm
UNITS	SMT TYPE H=7.1mm W/ POLARIZATION
SHEET SIZE	SERIES DS1023-17 SERIES



晨翔电子有限公司

CONNFLY CONNELY ELECTRONIC CO. LTD