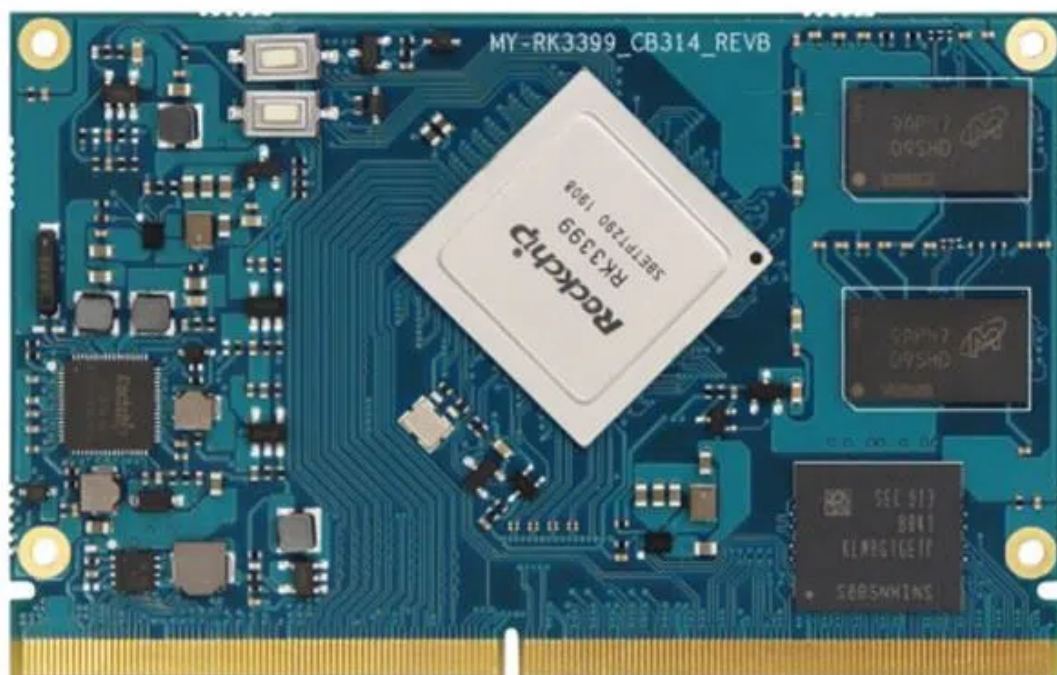


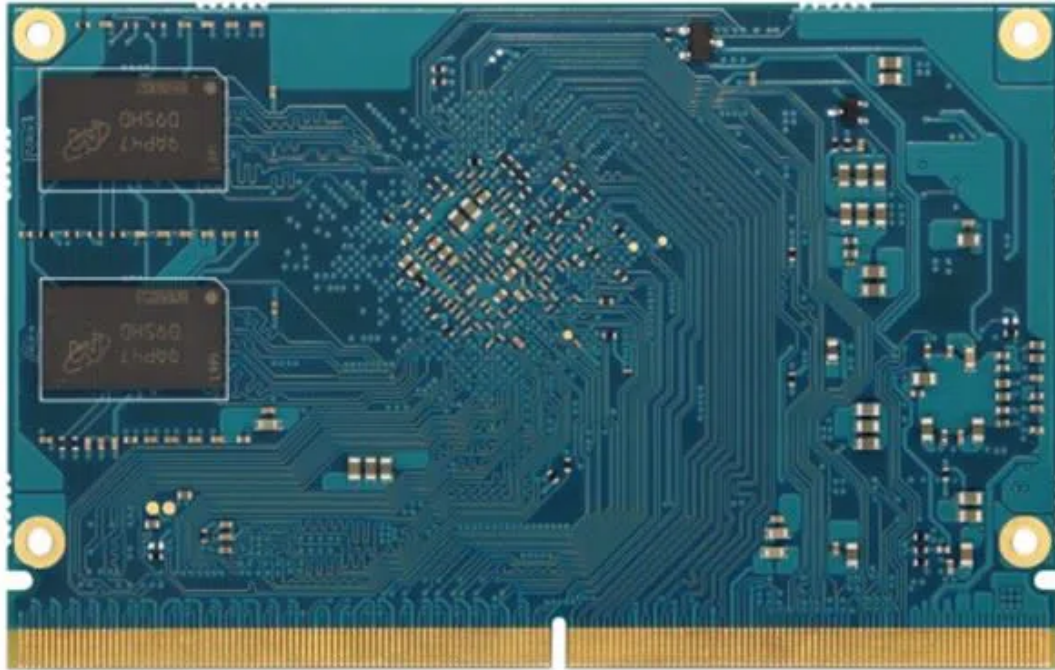
## RK3399 system on module

Model: MY-RK3399-CB314

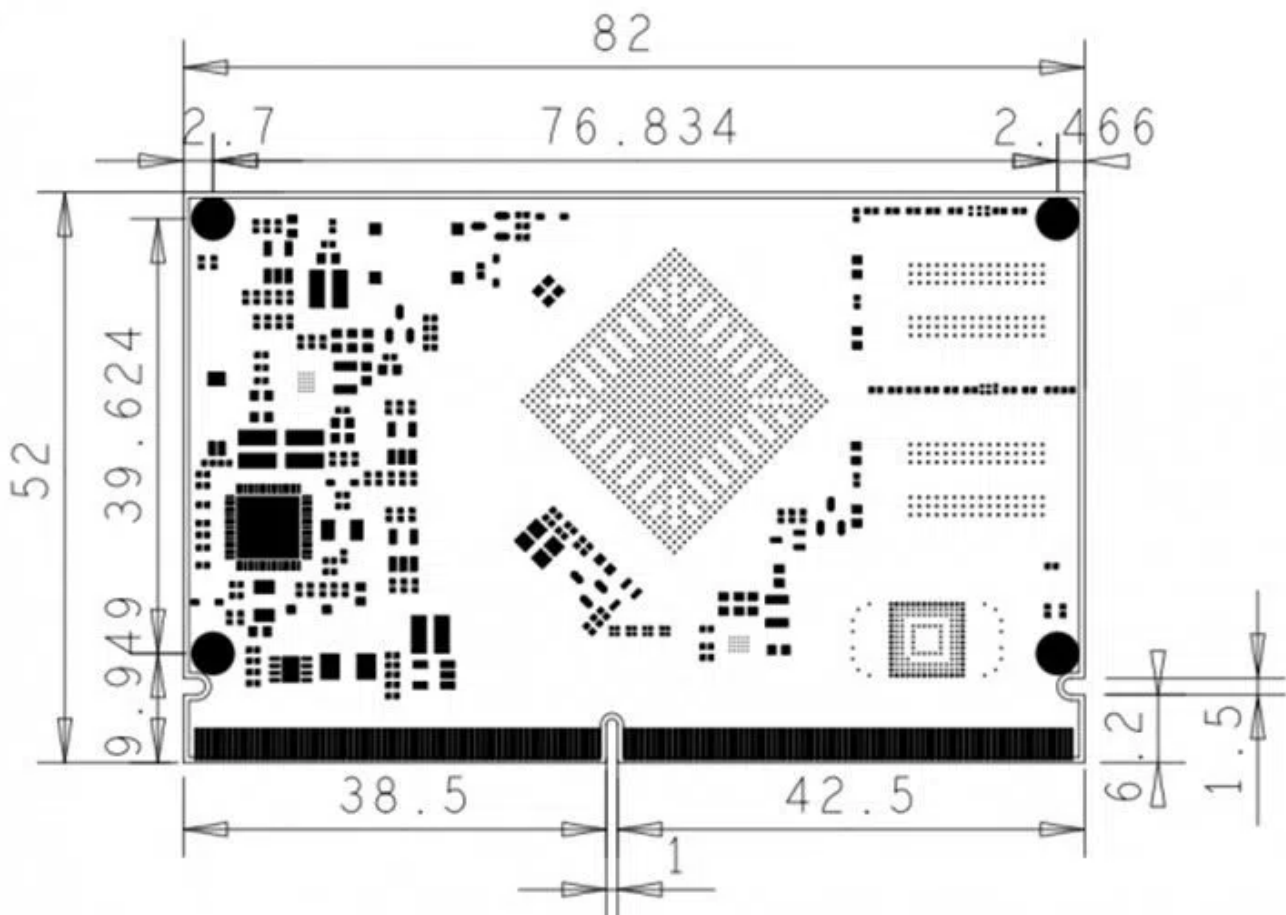
### Front view



### Rear view



**Size**



## MY-RK3399\_CB314 parameter

### Master control platform detailed parameters

CPU	Six-core ARM 64-bit processor, large and small core architecture Dual-core Cortex-A72 (up to 1.8GHz) + quad-core Cortex-A53 (up to 1.4GHz), and built-in low-power MCU Cortex-M0
	First level cache: Each Cortex-A72 is configured with 48KB / 32KB ICache / DCache; Each Cortex-A53 is configured with 32KB / 32KB ICache / DCache;
	L2 cache: 1 Cortex-A72 with 1MB; Four Cortex-A53 are configured with 512KB;
GPU	Adopt quad-core Mali-T860 GPU, support ES1.1 / 2.0 / 3.0 / 3.1, OpenGL, OpenVG11.1, OpenCL and DX11
	Supports AFBC (Frame Buffer Compression)
Multimedia	Support 4K VP9 and 4K 10bits H265 / H264 video decoding, up to 60fps
	1080P multi-format video decoding (WMV, MPEG-1 / 2/4, VP8)
	1080P video decoding, support H.264, VP8 format
	Video post-production processor: de-interlacing, de-noising, edge / detail / color optimization
Display	Dual VOP (Video Output Processor) display: resolution supports 4096 * 2160 and 2560 * 1600 respectively
	Supports dual-channel MIPI-DSI (4 lines per channel)
	Supports eDP 1.3 (4-wire, 10.8Gbps)
	HDMI 2.0a supports 4K 60Hz display and HDCP 1.4 / 2.2

	Supports DisplayPort 1.2 (4 lines, up to 4K 60Hz)
	Support Rec.2020 and Rec.709 color gamut conversion
Camera	Support dual MIPI-CSI interface camera simultaneous access, built-in dual ISP (Image Sensor Processor), pixel processing capacity up to: single 13MPix / s, dual 8MPix / s
	Supports single DVP interface camera, up to 5MPix / s
Audio	Audio support single HDMI 2.0 / DisplayPort 1.2 audio output
	Single SPDIF digital audio interface
	Three I2S audio input and output, I2S0 / I2S2 can support 8 channels of input and output, I2S1 supports 2 channels of input and output (of which I2S2 is used for internal HDMI / DP audio output)
RTC	built-in RTC real-time clock (can support timing on / off)
Ethernet	support 10/100 / 1000Mbps Ethernet
wireless network	WIFI & Bluetooth integrated module supporting SDIO interface
PCIe	supports PCIe 2.1 (4 full-duplex lanes )
USB	Support dual USB 2.0 OTG and dual USB 2.0 HOST interface (configurable dual USB3.0 Type-C interface)
Other	1 * SDMMC, 9 * I2C, 6 * SPI, 5 * UART, 5 * ADC, 4 * PWM, 5 groups of GPIO
System	ubuntu16.04、 android8.1

## Hardware configuration

Core board main model	CPU	Memory Capacity	storage	Startup method	Burning method	other
MY-RK3399_CB314	RK3399	2G eMMC: 8G ~ 64G	eMMC	Press to enter	Standard configuration: memory 2G, storage 8G	/

## Temperature range

### Operating temperature

- Commercial:

0°C ~ 70°C(Commercial)

### Storage temperature

-20°C ~ 100°C

### Operating system supported

- kernel: ubuntu16.04
- kernel: android8.1

## Hardware interface

multimedia	EDP	1Lane	Support EDP1.3, up to 4 channels, each channel can reach 2.7Gbps, 2560x1600 @ 60fps Support RGB 6/8 / 10bit video format
	HDMI	1Lane	Supports HDMI 1.4 and 2.0, 3 channels, each channel can reach 6Gbps, 4kx2k @ 60fps Supports 480p / 480i / 576p / 576i / 720p / 1080p / 1080i

	MIPI	3Lane	MIPI0 only for DSI, MIPI1 for DSI or CSI, MIPI2 only for CSI  MIPI-CSI: 4 Lane, 1.5Gbps per lane MIPI-DSI: 4 Lane, 1.5Gbps per lane, 2560x1600@60fps
	CIF	1Lane	8bit
	I2S/PCM	3Lane	I2S0/I2S2 support up to 8 channels TX and 8 channels RX  I2S1 supports up to 2 channels TX and 2 channels RX
	SPDIF	1Lane	Supports up to 24bits resolution
External storage interface	SDMMC0	1Lane	4bit, pin level: 1.8V / 3.0V, automatic level switching
	SDIO3.0	1Lane	4bit, Pin level: 1.8V
Communication Interface	Ethernet	1Lane	10/100/1000 Mbps
	USB	2	USB2.0 OTGx2 & USB2.0 HOSTx2 & USB3.0x2 (can be configured with 2 Type-C)
	UART	5Lane	Support 5bit,6bit,7bit,8bit serial data transmit or receive
	PCIE	1Lane	Compliant with PCIE2.1 specification, up to 4 bidirectional channels  2.5GT / s serial data transmission rate per channel per direction
	I2C	9Lane	Data on the I2C-bus can be transferred at rates of up to 100 kbit/s in the Standardmode, up to 400 kbit/s in the Fast-mode or up to 1 Mbit/s in Fast-mode Plus

SPI	6Lane	Supports serial master / slave mode, configured by software Built-in two 32x16bit FIFOs for TX and RX respectively
PWM	4Lane	32bit timer / counter
ADC	5Lane	10bit, up to 1MS / s sampling rate

Hot Tags: rk3399 som, manufacturers, suppliers, factory, wholesale, customized, I.mx6 Development Board, Imx6ul Board, System Module, Cortex A9, Four-way Analog Camera To PCIE Module, Arm Cortex