

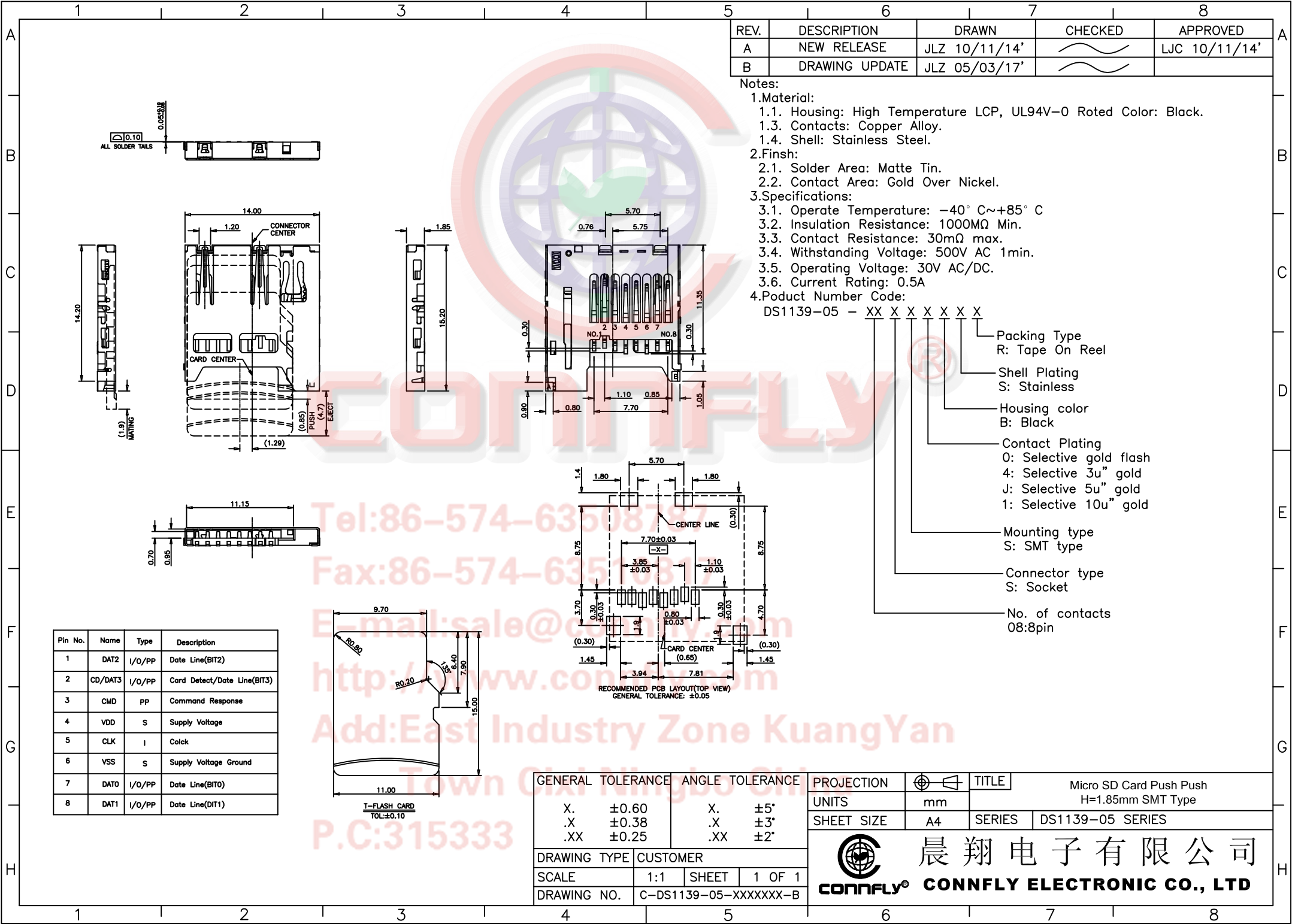
REV.	DESCRIPTION	DRAWN	CHECKED	APPROVED
A	NEW RELEASE	JLZ 10/11/14'		LJC 10/11/14'
B	DRAWING UPDATE	JLZ 05/03/17'		

Notes:

- Material:
 - Housing: High Temperature LCP, UL94V-0 Roted Color: Black.
 - Contacts: Copper Alloy.
 - Shell: Stainless Steel.
- Finish:
 - Solder Area: Matte Tin.
 - Contact Area: Gold Over Nickel.
- Specifications:
 - Operate Temperature: $-40^{\circ}\text{C} \sim +85^{\circ}\text{C}$
 - Insulation Resistance: 1000M Ω Min.
 - Contact Resistance: 30m Ω max.
 - Withstanding Voltage: 500V AC 1min.
 - Operating Voltage: 30V AC/DC.
 - Current Rating: 0.5A
- Product Number Code:

DS1139-05 - XX X X X X X X

- Packing Type
- R: Tape On Reel
- Shell Plating
- S: Stainless
- Housing color
- B: Black
- Contact Plating
- 0: Selective gold flash
- 4: Selective 3u" gold
- J: Selective 5u" gold
- 1: Selective 10u" gold
- Mounting type
- S: SMT type
- Connector type
- S: Socket
- No. of contacts
- 08:8pin



Tel:86-574-63508787
 Fax:86-574-63508317
 E-mail:sale@connfly.com
 http://www.connfly.com
 Add:East Industry Zone KuangYan
 Town Cixi Ningbo City
 P.C:315333

Pin No.	Name	Type	Description
1	DAT2	I/O/PP	Date Line(BIT2)
2	CD/DAT3	I/O/PP	Card Detect/Date Line(BIT3)
3	CMD	pp	Command Response
4	VDD	S	Supply Voltage
5	CLK	I	Clock
6	VSS	S	Supply Voltage Ground
7	DAT0	I/O/PP	Date Line(BIT0)
8	DAT1	I/O/PP	Date Line(DIT1)

GENERAL TOLERANCE	ANGLE TOLERANCE
X. ±0.60	X. ±5°
.X ±0.38	.X ±3°
.XX ±0.25	.XX ±2°

PROJECTION	TITLE
	Micro SD Card Push Push H=1.85mm SMT Type
UNITS	mm
SHEET SIZE	A4
SERIES	DS1139-05 SERIES

DRAWING TYPE	CUSTOMER
SCALE	1:1 SHEET 1 OF 1
DRAWING NO.	C-DS1139-05-XXXXXXX-B

晨翔电子有限公司
CONNFLY CONNLY ELECTRONIC CO., LTD