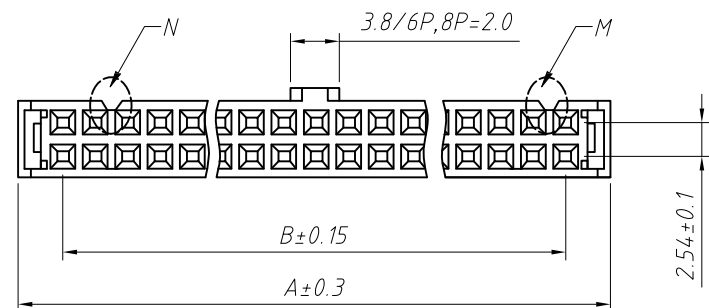
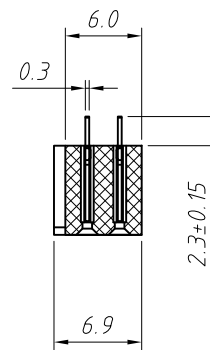
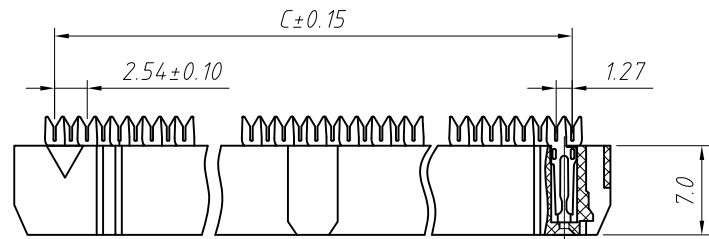
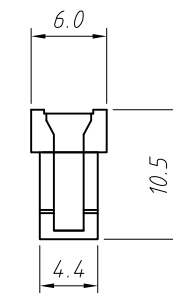
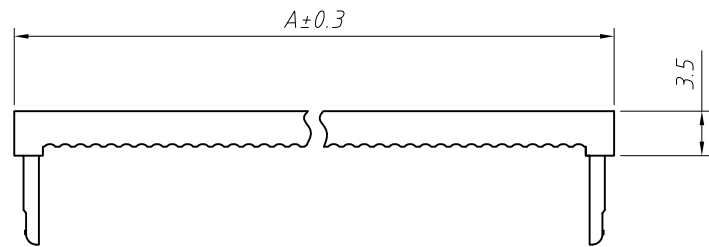
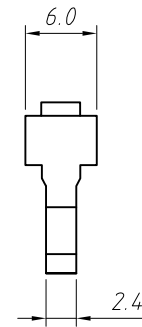
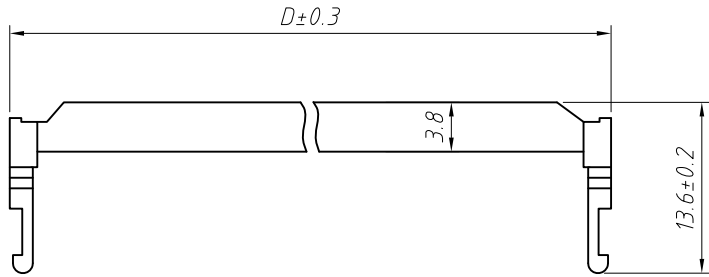


RoHS Compliance



**Material:**  
 Housing: PBT,UL94V-0  
 Contacts: Brass  
 Plating: Au or Sn over 50u" nickel

**Electrical Characteristics:**  
 Current Rating: 3.0 AMP  
 Insulator Resistance: 1000M Ohm min.  
 Withstand Voltage: 1000V AC / Minute  
 Contact Resistance: 20m Ohm max.  
 Operating Temperature: -40°C ~ +105°C  
 Max.Processing Temp: 180°C for 30-60 seconds  
 (200°C for 10 seconds)

**Note:**  
 6P Without Slot M and N  
 8P ~ 12P With Slot M, Without Slot N  
 14P ~ 64P With Slot M and N

Pin	Dimension mm			
	A	B	C	D
06	12.42	5.08	6.35	12.12
08	14.96	7.62	8.89	14.66
10	17.50	10.16	11.43	17.20
12	20.04	12.70	13.97	19.74
14	22.58	15.24	16.51	22.28
16	25.12	17.78	19.05	24.82
18	27.66	20.32	21.59	27.36
20	30.20	22.86	24.13	29.90
24	35.28	27.94	29.21	34.98
26	37.82	30.48	31.75	37.52
28	40.36	33.02	34.29	40.06
30	42.90	35.56	36.83	42.60
34	47.98	40.64	41.91	47.68
40	55.60	48.26	49.53	55.30
44	60.68	53.34	54.61	60.38
50	68.30	60.96	62.23	68.00
60	81.00	73.66	74.93	80.70
64	86.08	78.74	80.01	85.78

**Order Information:**

L-KLS1-204-XX-B

L: RoHS  
 IDC connectors  
 2.54mm Pitch  
 XX-No. of 06 ~ 64pin  
 Color: B=Black G=Gray L=Blue

ANGLE TOLERANCE	PROJECTION	Description:	
±3°		2.54mm Pitch IDC Socket Connector	
GENERAL TOLERANCE	UNITS	mm	KLS P/N:
x.x ±0.30	SHEET SIZE	A4	L-KLS1-204-XX-B
x.xx ±0.20	Draw:	Daniel	2018-07-10
x.xxx ±0.10	Check:	Daniel	2018-07-10



NingBo KLS ELECTRONIC CO.,LTD.